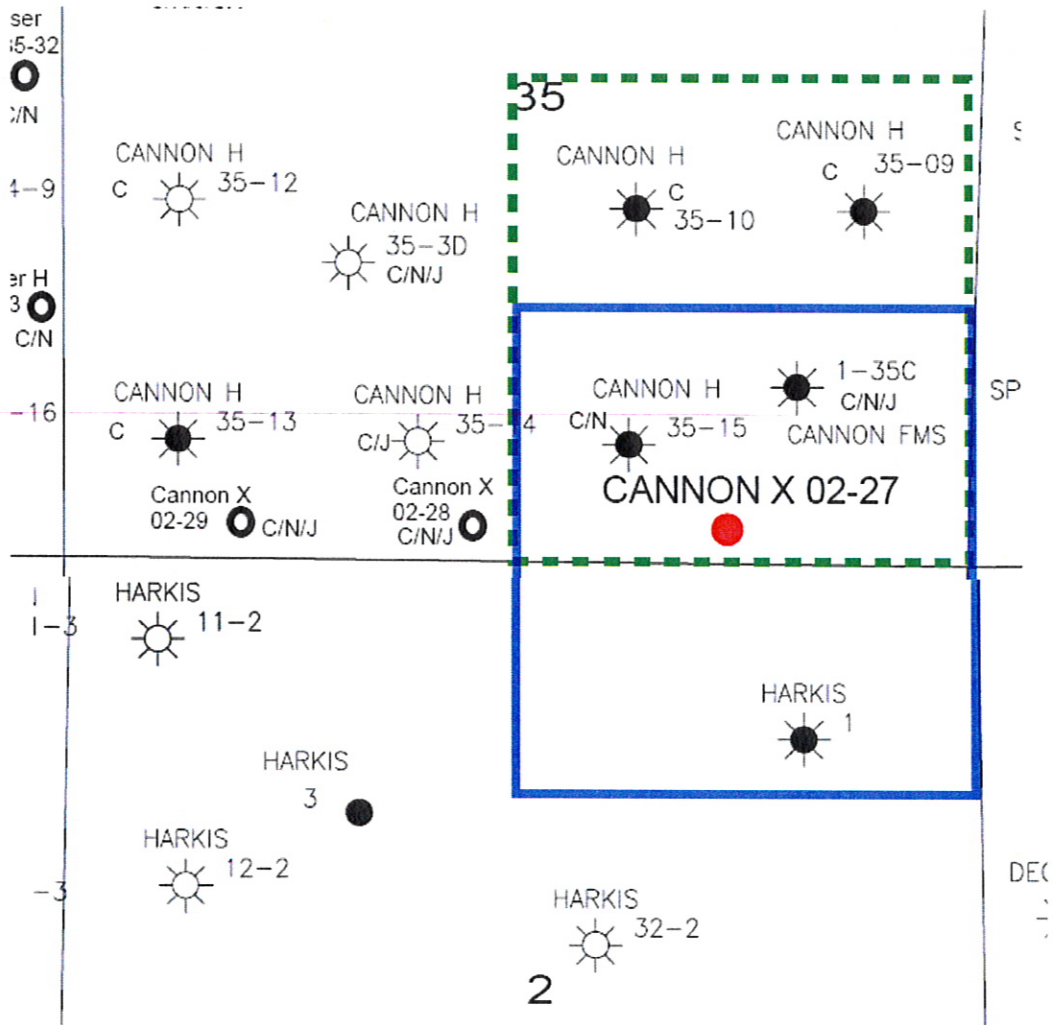


**Cannon X 02-27**  
**SWSE, Section 35, T3N, R65W**



**LEGEND**



Proposed 160 acre Spacing Unit



Bottom Hole Located SWSE, Section 35, T3N, R65W

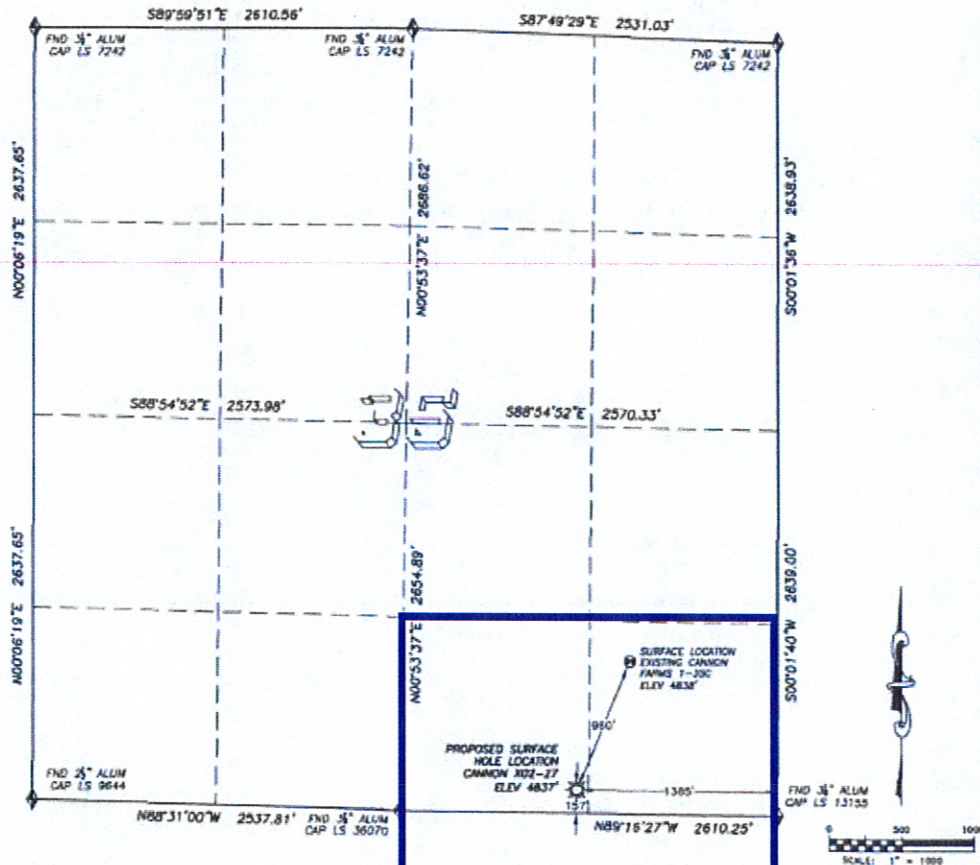
The governmental  $\frac{1}{4}$  Section has less than 8 bottom hole wells producing from the Codell, Niobrara, & J-Sand Formations.

# Proposed 318Ae Spacing Unit

DALEY LAND SURVEYING, INC. 10727 FLAGLER DR. PARKER, CO. 80134

## WELL LOCATION CERTIFICATE

SECTION 35, TOWNSHIP 3 NORTH, RANGE 65 WEST OF THE 6TH PRINCIPLE MERIDIAN



### NAD 83 LATITUDE AND LONGITUDE

#### CANNON X02-27 SURFACE HOLE:

LATITUDE: N 40.17477°  
LONGITUDE: W 104.62674°  
ELEVATION: 4837'  
POOP: 1.2

#### NEAREST EXISTING WELL:

##### CANNON FARMS 1-30C SURFACE HOLE

LATITUDE: N 40.17721°  
LONGITUDE: W 104.62643°  
ELEVATION: 4838'  
POOP: 1.2

#### QUARTER/QUARTER:

SW/SE

#### NEAREST ADJACENT PROPERTY LINE:

157' & SOUTH

#### LEGEND:

- ① FOUND MONUMENT AS DESCRIBED
- ② PROPOSED WELL
- ③ EXISTING WELL
- ④ CALCULATED DIMENSION

IN ACCORDANCE WITH A REQUEST FROM DREW HETHERINGTON OF NOBLE ENERGY INC., DALEY LAND SURVEYING, INC. HAS DETERMINED THE SURFACE LOCATION OF THE CANNON X02-27 WELL TO BE 157' FSL, 130' FEL, AS MEASURED AT NINETY (90) DEGREES FROM THE SECTION LINES OF SECTION 35, TOWNSHIP 3 NORTH, RANGE 65 WEST OF THE 6TH PRINCIPLE MERIDIAN, WELD COUNTY, COLORADO.

I HEREBY CERTIFY THAT THE SURFACE LOCATION OF THE CANNON X02-27 WELL WAS DETERMINED BY MY DIRECT SUPERVISION, THAT THE WORK WAS COMPLETED ON 12/30/2008 FOR AND ON BEHALF OF NOBLE ENERGY, INC., AND THAT THIS MAP DOES NOT REPRESENT A BOUNDARY SURVEY, IT IS NOT A LAND SURVEY PLAT OR AN IMPROVEMENT SURVEY PLAT, AND IS NOT TO BE RELIED UPON FOR THE ESTABLISHMENT OF FENCE, BUILDING OR OTHER FUTURE IMPROVEMENT LINES.

#### NOTES:

- 1) BASIS OF BORINGS FOR THIS MAP ARE BASED UPON GPS OBSERVATIONS MADE ON 12/23/2008 BETWEEN MONUMENTS LOCATED AT THE SOUTHEAST AND SOUTH QUARTER CORNERS OF SECTION 35, AND ALL BEARINGS SHOWN HEREON ARE RELATIVE THERE TO.
- 2) HORIZONTAL DATUM IS NAD83.
- 3) VERTICAL DATUM IS NAVD83. ELEVATIONS ARE DERIVED FROM GPS-BITC OBSERVATIONS PROCESSED THROUGH OPUS, UTILIZING THE GEOTID MODEL.
- 4) THERE IS A BARBED WIRE FENCE 183' SOUTH.
- 5) THE LOCATION FALLS IN NATURAL PRAIRIE AND SAGEBRUSH.

NOTICE: According to Colorado law you must commence any legal action based upon any defect in this W.L.C. within three years after you first discover such defect. In no event may any action based upon any such defect in this W.L.C. be commenced more than ten years from the date of the certification shown herein.



FOR MAP, SEE RECORD OF DALEY LAND SURVEYING, INC. Robert Daley, PLS 35597 Job # 0810-007.1