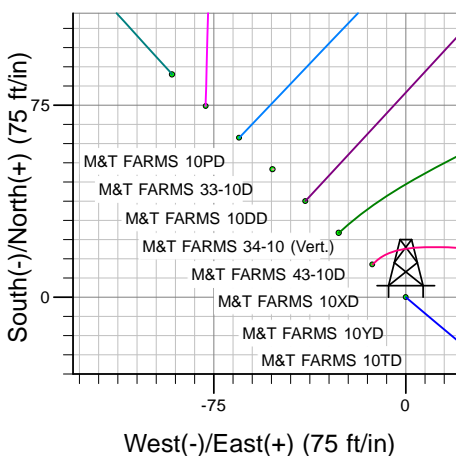
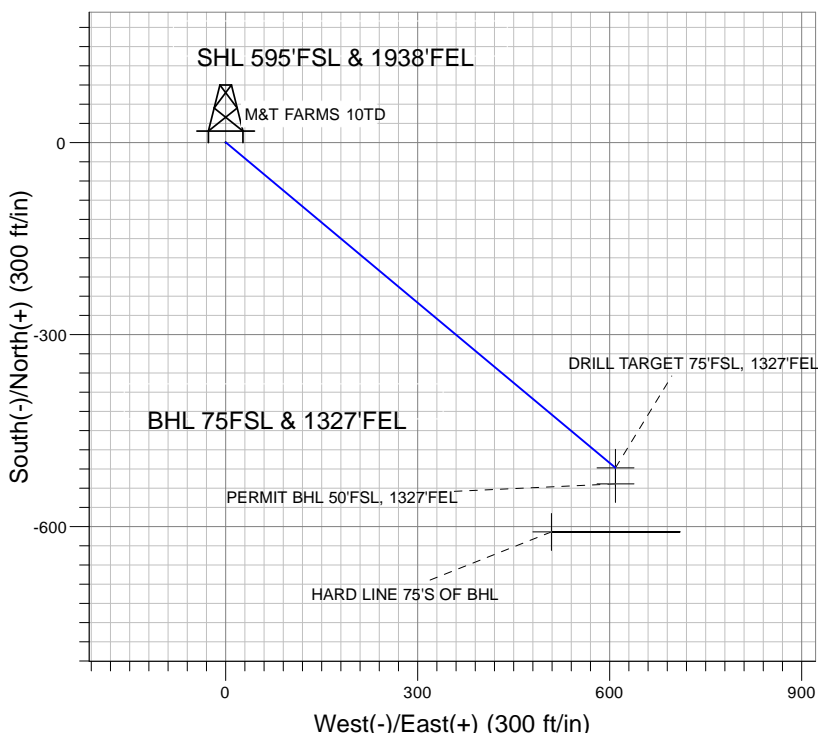
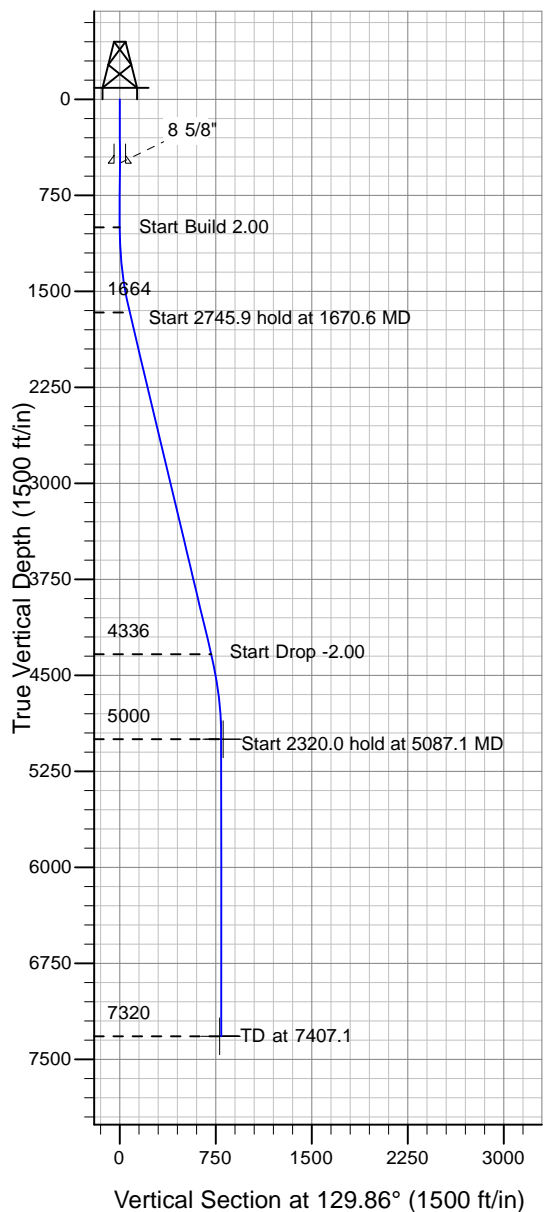


Well Name: M&T FARMS 10TD

Surface Location: M&T PAD Sec.10-T6N-R65W
 North American Datum 1983 , US State Plane 1983 , Colorado Northern Zone
 Ground Elevation: 4746.0

+N/-S+E/-W Northing Easting Latitude Longitude Slot
 0.0 0.0 1424389.36 3237227.55 40° 29' 42.785 N 104° 38' 49.258 W
 Original Well Elev 10TD @ 4759.0ft (Original Well Elev)

Synergy Resources



M&T PAD Sec.10-T6N-R65W
 M&T FARMS 10TD
 Plan #1 (2-23-10)
 11:37, March 03 2010



Azimuths to True North
 Magnetic North: 8.97°
 Magnetic Field
 Strength: 53367.2snT
 Dip Angle: 67.21°
 Date: 12/31/2009
 Model: IGRF200510

WELLBORE TARGET DETAILS (LAT/LONG)

Name	TVD	+N/-S	+E/-W	Latitude	Longitude	Shape
DRILL TARGET 75'FSL, 1327'FEL	5000.0	-508.4	608.8	40° 29' 37.761 N	104° 38' 41.377 W	Point
PERMIT BHL 50'FSL, 1327'FEL	5000.0	-533.4	608.8	40° 29' 37.514 N	104° 38' 41.377 W	Point
HARD LINE 75'S OF BHL	7320.0	-608.4	508.8	40° 29' 36.773 N	104° 38' 42.672 W	Polygon

SECTION DETAILS

Sec	MD	Inc	Azi	TVD	+N/-S	+E/-W	DLeg	TFace	VSec	Target
1	0.0	0.00	0.00	0.0	0.0	0.0	0.00	0.00	0.0	
2	1000.0	0.00	0.00	1000.0	0.0	0.0	0.00	0.00	0.0	
3	1670.6	13.41	129.86	1664.5	-50.1	60.0	2.00	129.86	78.1	
4	4416.5	13.41	129.86	4335.5	-458.3	548.9	0.00	0.00	715.0	
5	5087.1	0.00	0.00	5000.0	-508.4	608.8	2.00	180.00	793.2	DRILL TARGET 75'FSL, 1327'FEL
6	7407.1	0.00	0.00	7320.0	-508.4	608.8	0.00	0.00	793.2	



Synergy Resources

SEC.10-T6N-65W

M&T PAD Sec.10-T6N-R65W

M&T FARMS 10TD

Wellbore #1

Plan: Plan #1 (2-23-10)

Standard Planning Report

03 March, 2010

Database:	EDM den0-adp01 Server Data	Local Co-ordinate Reference:	Well M&T FARMS 10TD
Company:	Synergy Resources	TVD Reference:	10TD @ 4759.0ft (Original Well Elev)
Project:	SEC.10-T6N-65W	MD Reference:	10TD @ 4759.0ft (Original Well Elev)
Site:	M&T PAD Sec.10-T6N-R65W	North Reference:	True
Well:	M&T FARMS 10TD	Survey Calculation Method:	Minimum Curvature
Wellbore:	Wellbore #1		
Design:	Plan #1 (2-23-10)		

Project	SEC.10-T6N-65W, Weld County, Colorado		
Map System:	US State Plane 1983	System Datum:	Mean Sea Level
Geo Datum:	North American Datum 1983		
Map Zone:	Colorado Northern Zone		Using geodetic scale factor

Site		M&T PAD Sec.10-T6N-R65W			
Site Position:		Northing:	1,426,500.00ft	Latitude:	40° 30' 3.710 N
From:	Lat/Long	Easting:	3,236,500.00ft	Longitude:	104° 38' 58.413 W
Position Uncertainty:	0.0 ft	Slot Radius:	"	Grid Convergence:	0.55 °

Well	M&T FARMS 10TD, SHL LAT: 40.495218, LONG: -104.647016					
Well Position	+N-S	-2,117.6 ft	Northing:	1,424,389.36 ft	Latitude:	40° 29' 42.785 N
	+E-W	707.2 ft	Easting:	3,237,227.55 ft	Longitude:	104° 38' 49.258 W
Position Uncertainty		0.0 ft	Wellhead Elevation:	4,759.0 ft	Ground Level:	4,746.0 ft

Wellbore	Wellbore #1				
Magnetics	Model Name	Sample Date	Declination (°)	Dip Angle (°)	Field Strength (nT)
	IGRF200510	12/31/2009	8.97	67.21	53,367

Design	Plan #1 (2-23-10)			
Audit Notes:				
Version:	Phase:	PROTOTYPE	Tie On Depth:	0.0
Vertical Section:	Depth From (TVD) (ft)	+N/-S (ft)	+E/-W (ft)	Direction (°)
	0.0	0.0	0.0	129.86

Plan Sections										
Measured Depth (ft)	Inclination (°)	Azimuth (°)	Vertical Depth (ft)	+N/-S (ft)	+E/-W (ft)	Dogleg Rate (°/100ft)	Build Rate (°/100ft)	Turn Rate (°/100ft)	TFO (°)	Target
0.0	0.00	0.00	0.0	0.0	0.0	0.00	0.00	0.00	0.00	
1,000.0	0.00	0.00	1,000.0	0.0	0.0	0.00	0.00	0.00	0.00	
1,670.6	13.41	129.86	1,664.5	-50.1	60.0	2.00	2.00	0.00	129.86	
4,416.5	13.41	129.86	4,335.5	-458.3	548.9	0.00	0.00	0.00	0.00	
5,087.1	0.00	0.00	5,000.0	-508.4	608.8	2.00	-2.00	0.00	180.00	DRILL TARGET 75
7,407.1	0.00	0.00	7,320.0	-508.4	608.8	0.00	0.00	0.00	0.00	

Database:	EDM den0-adp01 Server Data	Local Co-ordinate Reference:	Well M&T FARMS 10TD
Company:	Synergy Resources	TVD Reference:	10TD @ 4759.0ft (Original Well Elev)
Project:	SEC.10-T6N-65W	MD Reference:	10TD @ 4759.0ft (Original Well Elev)
Site:	M&T PAD Sec.10-T6N-R65W	North Reference:	True
Well:	M&T FARMS 10TD	Survey Calculation Method:	Minimum Curvature
Wellbore:	Wellbore #1		
Design:	Plan #1 (2-23-10)		

Planned Survey									
Measured Depth (ft)	Inclination (°)	Azimuth (°)	Vertical Depth (ft)	+N/-S (ft)	+E/-W (ft)	Vertical Section (ft)	Dogleg Rate (°/100ft)	Build Rate (°/100ft)	Turn Rate (°/100ft)
0.0	0.00	0.00	0.0	0.0	0.0	0.0	0.00	0.00	0.00
40.0	0.00	0.00	40.0	0.0	0.0	0.0	0.00	0.00	0.00
80.0	0.00	0.00	80.0	0.0	0.0	0.0	0.00	0.00	0.00
120.0	0.00	0.00	120.0	0.0	0.0	0.0	0.00	0.00	0.00
160.0	0.00	0.00	160.0	0.0	0.0	0.0	0.00	0.00	0.00
200.0	0.00	0.00	200.0	0.0	0.0	0.0	0.00	0.00	0.00
240.0	0.00	0.00	240.0	0.0	0.0	0.0	0.00	0.00	0.00
280.0	0.00	0.00	280.0	0.0	0.0	0.0	0.00	0.00	0.00
320.0	0.00	0.00	320.0	0.0	0.0	0.0	0.00	0.00	0.00
360.0	0.00	0.00	360.0	0.0	0.0	0.0	0.00	0.00	0.00
400.0	0.00	0.00	400.0	0.0	0.0	0.0	0.00	0.00	0.00
440.0	0.00	0.00	440.0	0.0	0.0	0.0	0.00	0.00	0.00
480.0	0.00	0.00	480.0	0.0	0.0	0.0	0.00	0.00	0.00
500.0	0.00	0.00	500.0	0.0	0.0	0.0	0.00	0.00	0.00
8 5/8"									
520.0	0.00	0.00	520.0	0.0	0.0	0.0	0.00	0.00	0.00
560.0	0.00	0.00	560.0	0.0	0.0	0.0	0.00	0.00	0.00
600.0	0.00	0.00	600.0	0.0	0.0	0.0	0.00	0.00	0.00
640.0	0.00	0.00	640.0	0.0	0.0	0.0	0.00	0.00	0.00
680.0	0.00	0.00	680.0	0.0	0.0	0.0	0.00	0.00	0.00
720.0	0.00	0.00	720.0	0.0	0.0	0.0	0.00	0.00	0.00
760.0	0.00	0.00	760.0	0.0	0.0	0.0	0.00	0.00	0.00
800.0	0.00	0.00	800.0	0.0	0.0	0.0	0.00	0.00	0.00
840.0	0.00	0.00	840.0	0.0	0.0	0.0	0.00	0.00	0.00
880.0	0.00	0.00	880.0	0.0	0.0	0.0	0.00	0.00	0.00
920.0	0.00	0.00	920.0	0.0	0.0	0.0	0.00	0.00	0.00
960.0	0.00	0.00	960.0	0.0	0.0	0.0	0.00	0.00	0.00
1,000.0	0.00	0.00	1,000.0	0.0	0.0	0.0	0.00	0.00	0.00
1,040.0	0.80	129.86	1,040.0	-0.2	0.2	0.3	2.00	2.00	0.00
1,080.0	1.60	129.86	1,080.0	-0.7	0.9	1.1	2.00	2.00	0.00
1,120.0	2.40	129.86	1,120.0	-1.6	1.9	2.5	2.00	2.00	0.00
1,160.0	3.20	129.86	1,159.9	-2.9	3.4	4.5	2.00	2.00	0.00
1,200.0	4.00	129.86	1,199.8	-4.5	5.4	7.0	2.00	2.00	0.00
1,240.0	4.80	129.86	1,239.7	-6.4	7.7	10.0	2.00	2.00	0.00
1,280.0	5.60	129.86	1,279.6	-8.8	10.5	13.7	2.00	2.00	0.00
1,320.0	6.40	129.86	1,319.3	-11.4	13.7	17.9	2.00	2.00	0.00
1,360.0	7.20	129.86	1,359.1	-14.5	17.3	22.6	2.00	2.00	0.00
1,400.0	8.00	129.86	1,398.7	-17.9	21.4	27.9	2.00	2.00	0.00
1,440.0	8.80	129.86	1,438.3	-21.6	25.9	33.7	2.00	2.00	0.00
1,480.0	9.60	129.86	1,477.8	-25.7	30.8	40.1	2.00	2.00	0.00
1,520.0	10.40	129.86	1,517.1	-30.2	36.1	47.1	2.00	2.00	0.00
1,560.0	11.20	129.86	1,556.4	-35.0	41.9	54.6	2.00	2.00	0.00
1,600.0	12.00	129.86	1,595.6	-40.1	48.1	62.6	2.00	2.00	0.00
1,640.0	12.80	129.86	1,634.7	-45.6	54.6	71.2	2.00	2.00	0.00
1,670.6	13.41	129.86	1,664.5	-50.1	60.0	78.1	2.00	2.00	0.00
1,680.0	13.41	129.86	1,673.6	-51.5	61.6	80.3	0.00	0.00	0.00
1,720.0	13.41	129.86	1,712.5	-57.4	68.8	89.6	0.00	0.00	0.00
1,760.0	13.41	129.86	1,751.5	-63.4	75.9	98.9	0.00	0.00	0.00
1,800.0	13.41	129.86	1,790.4	-69.3	83.0	108.1	0.00	0.00	0.00
1,840.0	13.41	129.86	1,829.3	-75.3	90.1	117.4	0.00	0.00	0.00
1,880.0	13.41	129.86	1,868.2	-81.2	97.3	126.7	0.00	0.00	0.00
1,920.0	13.41	129.86	1,907.1	-87.2	104.4	136.0	0.00	0.00	0.00
1,960.0	13.41	129.86	1,946.0	-93.1	111.5	145.3	0.00	0.00	0.00
2,000.0	13.41	129.86	1,984.9	-99.0	118.6	154.5	0.00	0.00	0.00

Database:	EDM den0-adp01 Server Data	Local Co-ordinate Reference:	Well M&T FARMS 10TD
Company:	Synergy Resources	TVD Reference:	10TD @ 4759.0ft (Original Well Elev)
Project:	SEC.10-T6N-65W	MD Reference:	10TD @ 4759.0ft (Original Well Elev)
Site:	M&T PAD Sec.10-T6N-R65W	North Reference:	True
Well:	M&T FARMS 10TD	Survey Calculation Method:	Minimum Curvature
Wellbore:	Wellbore #1		
Design:	Plan #1 (2-23-10)		

Planned Survey									
Measured Depth (ft)	Inclination (°)	Azimuth (°)	Vertical Depth (ft)	+N/-S (ft)	+E/-W (ft)	Vertical Section (ft)	Dogleg Rate (°/100ft)	Build Rate (°/100ft)	Turn Rate (°/100ft)
2,040.0	13.41	129.86	2,023.8	-105.0	125.7	163.8	0.00	0.00	0.00
2,080.0	13.41	129.86	2,062.7	-110.9	132.9	173.1	0.00	0.00	0.00
2,120.0	13.41	129.86	2,101.6	-116.9	140.0	182.4	0.00	0.00	0.00
2,160.0	13.41	129.86	2,140.5	-122.8	147.1	191.6	0.00	0.00	0.00
2,200.0	13.41	129.86	2,179.5	-128.8	154.2	200.9	0.00	0.00	0.00
2,240.0	13.41	129.86	2,218.4	-134.7	161.4	210.2	0.00	0.00	0.00
2,280.0	13.41	129.86	2,257.3	-140.7	168.5	219.5	0.00	0.00	0.00
2,320.0	13.41	129.86	2,296.2	-146.6	175.6	228.8	0.00	0.00	0.00
2,360.0	13.41	129.86	2,335.1	-152.6	182.7	238.0	0.00	0.00	0.00
2,400.0	13.41	129.86	2,374.0	-158.5	189.8	247.3	0.00	0.00	0.00
2,440.0	13.41	129.86	2,412.9	-164.5	197.0	256.6	0.00	0.00	0.00
2,480.0	13.41	129.86	2,451.8	-170.4	204.1	265.9	0.00	0.00	0.00
2,520.0	13.41	129.86	2,490.7	-176.4	211.2	275.1	0.00	0.00	0.00
2,560.0	13.41	129.86	2,529.6	-182.3	218.3	284.4	0.00	0.00	0.00
2,600.0	13.41	129.86	2,568.5	-188.2	225.4	293.7	0.00	0.00	0.00
2,640.0	13.41	129.86	2,607.5	-194.2	232.6	303.0	0.00	0.00	0.00
2,680.0	13.41	129.86	2,646.4	-200.1	239.7	312.3	0.00	0.00	0.00
2,720.0	13.41	129.86	2,685.3	-206.1	246.8	321.5	0.00	0.00	0.00
2,760.0	13.41	129.86	2,724.2	-212.0	253.9	330.8	0.00	0.00	0.00
2,800.0	13.41	129.86	2,763.1	-218.0	261.1	340.1	0.00	0.00	0.00
2,840.0	13.41	129.86	2,802.0	-223.9	268.2	349.4	0.00	0.00	0.00
2,880.0	13.41	129.86	2,840.9	-229.9	275.3	358.6	0.00	0.00	0.00
2,920.0	13.41	129.86	2,879.8	-235.8	282.4	367.9	0.00	0.00	0.00
2,960.0	13.41	129.86	2,918.7	-241.8	289.5	377.2	0.00	0.00	0.00
3,000.0	13.41	129.86	2,957.6	-247.7	296.7	386.5	0.00	0.00	0.00
3,040.0	13.41	129.86	2,996.5	-253.7	303.8	395.8	0.00	0.00	0.00
3,080.0	13.41	129.86	3,035.5	-259.6	310.9	405.0	0.00	0.00	0.00
3,120.0	13.41	129.86	3,074.4	-265.6	318.0	414.3	0.00	0.00	0.00
3,160.0	13.41	129.86	3,113.3	-271.5	325.1	423.6	0.00	0.00	0.00
3,200.0	13.41	129.86	3,152.2	-277.4	332.3	432.9	0.00	0.00	0.00
3,240.0	13.41	129.86	3,191.1	-283.4	339.4	442.2	0.00	0.00	0.00
3,280.0	13.41	129.86	3,230.0	-289.3	346.5	451.4	0.00	0.00	0.00
3,320.0	13.41	129.86	3,268.9	-295.3	353.6	460.7	0.00	0.00	0.00
3,360.0	13.41	129.86	3,307.8	-301.2	360.8	470.0	0.00	0.00	0.00
3,400.0	13.41	129.86	3,346.7	-307.2	367.9	479.3	0.00	0.00	0.00
3,440.0	13.41	129.86	3,385.6	-313.1	375.0	488.5	0.00	0.00	0.00
3,480.0	13.41	129.86	3,424.5	-319.1	382.1	497.8	0.00	0.00	0.00
3,520.0	13.41	129.86	3,463.5	-325.0	389.2	507.1	0.00	0.00	0.00
3,560.0	13.41	129.86	3,502.4	-331.0	396.4	516.4	0.00	0.00	0.00
3,600.0	13.41	129.86	3,541.3	-336.9	403.5	525.7	0.00	0.00	0.00
3,640.0	13.41	129.86	3,580.2	-342.9	410.6	534.9	0.00	0.00	0.00
3,680.0	13.41	129.86	3,619.1	-348.8	417.7	544.2	0.00	0.00	0.00
3,720.0	13.41	129.86	3,658.0	-354.7	424.9	553.5	0.00	0.00	0.00
3,760.0	13.41	129.86	3,696.9	-360.7	432.0	562.8	0.00	0.00	0.00
3,800.0	13.41	129.86	3,735.8	-366.6	439.1	572.0	0.00	0.00	0.00
3,840.0	13.41	129.86	3,774.7	-372.6	446.2	581.3	0.00	0.00	0.00
3,880.0	13.41	129.86	3,813.6	-378.5	453.3	590.6	0.00	0.00	0.00
3,920.0	13.41	129.86	3,852.5	-384.5	460.5	599.9	0.00	0.00	0.00
3,960.0	13.41	129.86	3,891.5	-390.4	467.6	609.2	0.00	0.00	0.00
4,000.0	13.41	129.86	3,930.4	-396.4	474.7	618.4	0.00	0.00	0.00
4,040.0	13.41	129.86	3,969.3	-402.3	481.8	627.7	0.00	0.00	0.00
4,080.0	13.41	129.86	4,008.2	-408.3	488.9	637.0	0.00	0.00	0.00
4,120.0	13.41	129.86	4,047.1	-414.2	496.1	646.3	0.00	0.00	0.00
4,160.0	13.41	129.86	4,086.0	-420.2	503.2	655.5	0.00	0.00	0.00

Database:	EDM den0-adp01 Server Data	Local Co-ordinate Reference:	Well M&T FARMS 10TD
Company:	Synergy Resources	TVD Reference:	10TD @ 4759.0ft (Original Well Elev)
Project:	SEC.10-T6N-65W	MD Reference:	10TD @ 4759.0ft (Original Well Elev)
Site:	M&T PAD Sec.10-T6N-R65W	North Reference:	True
Well:	M&T FARMS 10TD	Survey Calculation Method:	Minimum Curvature
Wellbore:	Wellbore #1		
Design:	Plan #1 (2-23-10)		

Planned Survey									
Measured Depth (ft)	Inclination (°)	Azimuth (°)	Vertical Depth (ft)	+N/-S (ft)	+E/-W (ft)	Vertical Section (ft)	Dogleg Rate (°/100ft)	Build Rate (°/100ft)	Turn Rate (°/100ft)
4,200.0	13.41	129.86	4,124.9	-426.1	510.3	664.8	0.00	0.00	0.00
4,240.0	13.41	129.86	4,163.8	-432.1	517.4	674.1	0.00	0.00	0.00
4,280.0	13.41	129.86	4,202.7	-438.0	524.6	683.4	0.00	0.00	0.00
4,320.0	13.41	129.86	4,241.6	-443.9	531.7	692.7	0.00	0.00	0.00
4,360.0	13.41	129.86	4,280.5	-449.9	538.8	701.9	0.00	0.00	0.00
4,400.0	13.41	129.86	4,319.5	-455.8	545.9	711.2	0.00	0.00	0.00
4,416.5	13.41	129.86	4,335.5	-458.3	548.9	715.0	0.00	0.00	0.00
4,440.0	12.94	129.86	4,358.4	-461.7	553.0	720.4	2.00	-2.00	0.00
4,480.0	12.14	129.86	4,397.4	-467.3	559.6	729.1	2.00	-2.00	0.00
4,520.0	11.34	129.86	4,436.6	-472.5	565.9	737.2	2.00	-2.00	0.00
4,560.0	10.54	129.86	4,475.9	-477.4	571.7	744.8	2.00	-2.00	0.00
4,600.0	9.74	129.86	4,515.2	-481.9	577.1	751.9	2.00	-2.00	0.00
4,640.0	8.94	129.86	4,554.7	-486.1	582.1	758.4	2.00	-2.00	0.00
4,680.0	8.14	129.86	4,594.3	-489.9	586.7	764.3	2.00	-2.00	0.00
4,720.0	7.34	129.86	4,633.9	-493.3	590.8	769.7	2.00	-2.00	0.00
4,760.0	6.54	129.86	4,673.6	-496.4	594.5	774.5	2.00	-2.00	0.00
4,800.0	5.74	129.86	4,713.4	-499.2	597.8	778.8	2.00	-2.00	0.00
4,840.0	4.94	129.86	4,753.2	-501.5	600.7	782.5	2.00	-2.00	0.00
4,880.0	4.14	129.86	4,793.1	-503.6	603.1	785.7	2.00	-2.00	0.00
4,920.0	3.34	129.86	4,833.0	-505.2	605.1	788.3	2.00	-2.00	0.00
4,960.0	2.54	129.86	4,872.9	-506.6	606.7	790.4	2.00	-2.00	0.00
5,000.0	1.74	129.86	4,912.9	-507.5	607.8	791.8	2.00	-2.00	0.00
5,040.0	0.94	129.86	4,952.9	-508.1	608.5	792.8	2.00	-2.00	0.00
5,080.0	0.14	129.86	4,992.9	-508.4	608.8	793.2	2.00	-2.00	0.00
5,087.1	0.00	0.00	5,000.0	-508.4	608.8	793.2	2.00	-2.00	-1,828.70
DRILL TARGET 75'FSL, 1327'FEL - PERMIT BHL 50'FSL, 1327'FEL									
5,120.0	0.00	0.00	5,032.9	-508.4	608.8	793.2	0.00	0.00	0.00
5,160.0	0.00	0.00	5,072.9	-508.4	608.8	793.2	0.00	0.00	0.00
5,200.0	0.00	0.00	5,112.9	-508.4	608.8	793.2	0.00	0.00	0.00
5,240.0	0.00	0.00	5,152.9	-508.4	608.8	793.2	0.00	0.00	0.00
5,280.0	0.00	0.00	5,192.9	-508.4	608.8	793.2	0.00	0.00	0.00
5,320.0	0.00	0.00	5,232.9	-508.4	608.8	793.2	0.00	0.00	0.00
5,360.0	0.00	0.00	5,272.9	-508.4	608.8	793.2	0.00	0.00	0.00
5,400.0	0.00	0.00	5,312.9	-508.4	608.8	793.2	0.00	0.00	0.00
5,440.0	0.00	0.00	5,352.9	-508.4	608.8	793.2	0.00	0.00	0.00
5,480.0	0.00	0.00	5,392.9	-508.4	608.8	793.2	0.00	0.00	0.00
5,520.0	0.00	0.00	5,432.9	-508.4	608.8	793.2	0.00	0.00	0.00
5,560.0	0.00	0.00	5,472.9	-508.4	608.8	793.2	0.00	0.00	0.00
5,600.0	0.00	0.00	5,512.9	-508.4	608.8	793.2	0.00	0.00	0.00
5,640.0	0.00	0.00	5,552.9	-508.4	608.8	793.2	0.00	0.00	0.00
5,680.0	0.00	0.00	5,592.9	-508.4	608.8	793.2	0.00	0.00	0.00
5,720.0	0.00	0.00	5,632.9	-508.4	608.8	793.2	0.00	0.00	0.00
5,760.0	0.00	0.00	5,672.9	-508.4	608.8	793.2	0.00	0.00	0.00
5,800.0	0.00	0.00	5,712.9	-508.4	608.8	793.2	0.00	0.00	0.00
5,840.0	0.00	0.00	5,752.9	-508.4	608.8	793.2	0.00	0.00	0.00
5,880.0	0.00	0.00	5,792.9	-508.4	608.8	793.2	0.00	0.00	0.00
5,920.0	0.00	0.00	5,832.9	-508.4	608.8	793.2	0.00	0.00	0.00
5,960.0	0.00	0.00	5,872.9	-508.4	608.8	793.2	0.00	0.00	0.00
6,000.0	0.00	0.00	5,912.9	-508.4	608.8	793.2	0.00	0.00	0.00
6,040.0	0.00	0.00	5,952.9	-508.4	608.8	793.2	0.00	0.00	0.00
6,080.0	0.00	0.00	5,992.9	-508.4	608.8	793.2	0.00	0.00	0.00
6,120.0	0.00	0.00	6,032.9	-508.4	608.8	793.2	0.00	0.00	0.00
6,160.0	0.00	0.00	6,072.9	-508.4	608.8	793.2	0.00	0.00	0.00
6,200.0	0.00	0.00	6,112.9	-508.4	608.8	793.2	0.00	0.00	0.00

Database:	EDM den0-adp01 Server Data	Local Co-ordinate Reference:	Well M&T FARMS 10TD
Company:	Synergy Resources	TVD Reference:	10TD @ 4759.0ft (Original Well Elev)
Project:	SEC.10-T6N-65W	MD Reference:	10TD @ 4759.0ft (Original Well Elev)
Site:	M&T PAD Sec.10-T6N-R65W	North Reference:	True
Well:	M&T FARMS 10TD	Survey Calculation Method:	Minimum Curvature
Wellbore:	Wellbore #1		
Design:	Plan #1 (2-23-10)		

Planned Survey									
Measured Depth (ft)	Inclination (°)	Azimuth (°)	Vertical Depth (ft)	+N/-S (ft)	+E/-W (ft)	Vertical Section (ft)	Dogleg Rate (°/100ft)	Build Rate (°/100ft)	Turn Rate (°/100ft)
6,240.0	0.00	0.00	6,152.9	-508.4	608.8	793.2	0.00	0.00	0.00
6,280.0	0.00	0.00	6,192.9	-508.4	608.8	793.2	0.00	0.00	0.00
6,320.0	0.00	0.00	6,232.9	-508.4	608.8	793.2	0.00	0.00	0.00
6,360.0	0.00	0.00	6,272.9	-508.4	608.8	793.2	0.00	0.00	0.00
6,400.0	0.00	0.00	6,312.9	-508.4	608.8	793.2	0.00	0.00	0.00
6,440.0	0.00	0.00	6,352.9	-508.4	608.8	793.2	0.00	0.00	0.00
6,480.0	0.00	0.00	6,392.9	-508.4	608.8	793.2	0.00	0.00	0.00
6,520.0	0.00	0.00	6,432.9	-508.4	608.8	793.2	0.00	0.00	0.00
6,560.0	0.00	0.00	6,472.9	-508.4	608.8	793.2	0.00	0.00	0.00
6,600.0	0.00	0.00	6,512.9	-508.4	608.8	793.2	0.00	0.00	0.00
6,640.0	0.00	0.00	6,552.9	-508.4	608.8	793.2	0.00	0.00	0.00
6,680.0	0.00	0.00	6,592.9	-508.4	608.8	793.2	0.00	0.00	0.00
6,720.0	0.00	0.00	6,632.9	-508.4	608.8	793.2	0.00	0.00	0.00
6,760.0	0.00	0.00	6,672.9	-508.4	608.8	793.2	0.00	0.00	0.00
6,800.0	0.00	0.00	6,712.9	-508.4	608.8	793.2	0.00	0.00	0.00
6,840.0	0.00	0.00	6,752.9	-508.4	608.8	793.2	0.00	0.00	0.00
6,880.0	0.00	0.00	6,792.9	-508.4	608.8	793.2	0.00	0.00	0.00
6,920.0	0.00	0.00	6,832.9	-508.4	608.8	793.2	0.00	0.00	0.00
6,960.0	0.00	0.00	6,872.9	-508.4	608.8	793.2	0.00	0.00	0.00
7,000.0	0.00	0.00	6,912.9	-508.4	608.8	793.2	0.00	0.00	0.00
7,040.0	0.00	0.00	6,952.9	-508.4	608.8	793.2	0.00	0.00	0.00
7,080.0	0.00	0.00	6,992.9	-508.4	608.8	793.2	0.00	0.00	0.00
7,120.0	0.00	0.00	7,032.9	-508.4	608.8	793.2	0.00	0.00	0.00
7,160.0	0.00	0.00	7,072.9	-508.4	608.8	793.2	0.00	0.00	0.00
7,200.0	0.00	0.00	7,112.9	-508.4	608.8	793.2	0.00	0.00	0.00
7,240.0	0.00	0.00	7,152.9	-508.4	608.8	793.2	0.00	0.00	0.00
7,280.0	0.00	0.00	7,192.9	-508.4	608.8	793.2	0.00	0.00	0.00
7,320.0	0.00	0.00	7,232.9	-508.4	608.8	793.2	0.00	0.00	0.00
7,360.0	0.00	0.00	7,272.9	-508.4	608.8	793.2	0.00	0.00	0.00
7,400.0	0.00	0.00	7,312.9	-508.4	608.8	793.2	0.00	0.00	0.00
7,407.1	0.00	0.00	7,320.0	-508.4	608.8	793.2	0.00	0.00	0.00
HARD LINE 75'S OF BHL									

Targets									
Target Name	Dip Angle (°)	Dip Dir. (°)	TVD (ft)	+N/-S (ft)	+E/-W (ft)	Northing (ft)	Easting (ft)	Latitude	Longitude
DRILL TARGET 75'F5	0.00	0.00	5,000.0	-508.4	608.8	1,423,886.89	3,237,841.22	40° 29' 37.761 N	104° 38' 41.377 W
- hit/miss target									
- Shape									
- plan hits target center									
- Point									
HARD LINE 75'S OF I	0.00	0.00	7,320.0	-608.4	508.8	1,423,785.90	3,237,742.16	40° 29' 36.773 N	104° 38' 42.672 W
- plan misses target center by 141.5ft at 7407.1ft MD (7320.0 TVD, -508.4 N, 608.8 E)									
- Polygon									
Point 1			7,320.0	0.0	0.0	1,423,785.90	3,237,742.16		
Point 2			7,320.0	0.0	200.0	1,423,787.83	3,237,942.14		
PERMIT BHL 50'FSL,	0.00	0.00	5,000.0	-533.4	608.8	1,423,861.89	3,237,841.46	40° 29' 37.514 N	104° 38' 41.377 W
- plan misses target center by 25.0ft at 5087.1ft MD (5000.0 TVD, -508.4 N, 608.8 E)									
- Point									

Database:	EDM den0-adp01 Server Data	Local Co-ordinate Reference:	Well M&T FARMS 10TD
Company:	Synergy Resources	TVD Reference:	10TD @ 4759.0ft (Original Well Elev)
Project:	SEC.10-T6N-65W	MD Reference:	10TD @ 4759.0ft (Original Well Elev)
Site:	M&T PAD Sec.10-T6N-R65W	North Reference:	True
Well:	M&T FARMS 10TD	Survey Calculation Method:	Minimum Curvature
Wellbore:	Wellbore #1		
Design:	Plan #1 (2-23-10)		

Casing Points					
	Measured Depth (ft)	Vertical Depth (ft)	Name	Casing Diameter (")	Hole Diameter (")
	500.0	500.0	8 5/8"	8-5/8	12-1/4



Synergy Resources

SEC.10-T6N-65W

M&T PAD Sec.10-T6N-R65W

M&T FARMS 10TD

Wellbore #1

Plan #1 (2-23-10)

Anticollision Report

03 March, 2010

Company:	Synergy Resources	Local Co-ordinate Reference:	Well M&T FARMS 10TD
Project:	SEC.10-T6N-65W	TVD Reference:	10TD @ 4759.0ft (Original Well Elev)
Reference Site:	M&T PAD Sec.10-T6N-R65W	MD Reference:	10TD @ 4759.0ft (Original Well Elev)
Site Error:	0.0ft	North Reference:	True
Reference Well:	M&T FARMS 10TD	Survey Calculation Method:	Minimum Curvature
Well Error:	0.0ft	Output errors are at	2.00 sigma
Reference Wellbore	Wellbore #1	Database:	EDM den0-adp01 Server Data
Reference Design:	Plan #1 (2-23-10)	Offset TVD Reference:	Offset Datum

Reference	Plan #1 (2-23-10)		
Filter type:	NO GLOBAL FILTER: Using user defined selection & filtering criteria		
Interpolation Method:	MD Interval 100.0ft	Error Model:	ISCWSA
Depth Range:	Unlimited	Scan Method:	Closest Approach 3D
Results Limited by:	Maximum center-center distance of 2,000.0ft	Error Surface:	Elliptical Conic
Warning Levels Evaluated at:	2.00 Sigma		

Survey Tool Program	Date 3/3/2010			
From (ft)	To (ft)	Survey (Wellbore)	Tool Name	Description
0.0	7,407.1	Plan #1 (2-23-10) (Wellbore #1)	MWD	MWD - Standard

Summary						
Site Name	Reference Measured Depth (ft)	Offset Measured Depth (ft)	Distance Between Centres (ft)	Distance Between Ellipses (ft)	Separation Factor	Warning
Offset Well - Wellbore - Design						
M&T PAD Sec.10-T6N-R65W						
M&T FARMS 10YD - Wellbore #1 - Plan #1 (2-23-10)	902.0	902.0	18.2	14.4	4.787 CC	
M&T FARMS 10YD - Wellbore #1 - Plan #1 (2-23-10)	1,000.0	1,000.1	18.5	14.2	4.366 ES	
M&T FARMS 10YD - Wellbore #1 - Plan #1 (2-23-10)	1,100.0	1,100.3	20.1	15.4	4.325 SF	

Offset Design M&T PAD Sec.10-T6N-R65W - M&T FARMS 10YD - Wellbore #1 - Plan #1 (2-23-10)												Offset Site Error:	0.0 ft
Survey Program: 0-MWD												Offset Well Error:	0.0 ft
Reference		Offset		Semi Major Axis			Distance						
Measured Depth (ft)	Vertical Depth (ft)	Measured Depth (ft)	Vertical Depth (ft)	Reference (ft)	Offset (ft)	Highside Toolface (°)	Offset Wellbore Centre +N/-S (ft)	+E/-W (ft)	Between Centres (ft)	Between Ellipses (ft)	Minimum Separation (ft)	Separation Factor	Warning
0.0	0.0	0.0	0.0	0.0	0.0	-45.70	12.8	-13.1	18.3				
100.0	100.0	100.0	100.0	0.1	0.1	-45.70	12.8	-13.1	18.3	18.1	0.20	93.400	
200.0	200.0	200.0	200.0	0.3	0.3	-45.70	12.8	-13.1	18.3	17.6	0.65	28.313	
300.0	300.0	300.0	300.0	0.5	0.5	-45.70	12.8	-13.1	18.3	17.2	1.09	16.685	
400.0	400.0	400.0	400.0	0.8	0.8	-45.70	12.8	-13.1	18.3	16.7	1.54	11.828	
500.0	500.0	500.0	500.0	1.0	1.0	-45.70	12.8	-13.1	18.3	16.3	1.99	9.161	
600.0	600.0	600.0	600.0	1.2	1.2	-45.70	12.8	-13.1	18.3	15.8	2.44	7.475	
700.0	700.0	700.0	700.0	1.4	1.4	-45.70	12.8	-13.1	18.3	15.4	2.89	6.314	
800.0	800.0	800.0	800.0	1.7	1.7	-45.70	12.8	-13.1	18.3	14.9	3.34	5.465	
900.0	900.0	900.0	900.0	1.9	1.9	-40.22	13.9	-11.7	18.2	14.4	3.79	4.798	
902.0	902.0	902.0	902.0	1.9	1.9	-40.00	13.9	-11.7	18.2	14.4	3.80	4.787 CC	
1,000.0	1,000.0	1,000.1	1,000.0	2.1	2.1	-24.48	16.8	-7.6	18.5	14.2	4.23	4.366 ES	
1,100.0	1,100.0	1,100.3	1,099.9	2.3	2.3	-134.77	18.9	-0.4	20.1	15.4	4.64	4.325 SF	
1,200.0	1,199.8	1,200.2	1,199.2	2.5	2.5	-118.61	19.6	10.1	24.6	19.5	5.05	4.864	
1,300.0	1,299.5	1,299.9	1,298.0	2.7	2.8	-107.64	19.1	23.7	31.4	25.9	5.49	5.717	
1,400.0	1,398.7	1,399.4	1,396.0	2.9	3.1	-100.66	17.2	40.5	40.0	34.1	5.99	6.683	
1,500.0	1,497.5	1,498.6	1,493.1	3.2	3.4	-96.19	14.1	60.4	50.1	43.5	6.56	7.636	
1,600.0	1,595.6	1,597.5	1,589.3	3.5	3.8	-93.28	9.7	83.3	61.3	54.1	7.21	8.505	
1,700.0	1,693.1	1,696.1	1,684.2	3.9	4.3	-91.29	4.1	109.1	73.7	65.7	7.97	9.248	
1,800.0	1,790.4	1,794.3	1,777.9	4.3	4.8	-88.42	-2.8	137.9	87.1	78.3	8.80	9.905	
1,900.0	1,887.6	1,891.9	1,869.9	4.7	5.4	-84.56	-10.8	169.4	102.0	92.3	9.66	10.555	
2,000.0	1,984.9	1,988.6	1,959.9	5.1	6.0	-80.24	-20.0	203.4	118.6	108.1	10.54	11.257	
2,100.0	2,082.2	2,084.2	2,047.8	5.6	6.7	-75.83	-30.2	239.8	137.4	126.0	11.40	12.051	
2,200.0	2,179.5	2,180.5	2,135.2	6.0	7.5	-71.66	-41.4	278.6	158.3	146.1	12.25	12.922	

CC - Min centre to center distance or convergent point, SF - min separation factor, ES - min ellipse separation

Company:	Synergy Resources	Local Co-ordinate Reference:	Well M&T FARMS 10TD
Project:	SEC.10-T6N-65W	TVD Reference:	10TD @ 4759.0ft (Original Well Elev)
Reference Site:	M&T PAD Sec.10-T6N-R65W	MD Reference:	10TD @ 4759.0ft (Original Well Elev)
Site Error:	0.0ft	North Reference:	True
Reference Well:	M&T FARMS 10TD	Survey Calculation Method:	Minimum Curvature
Well Error:	0.0ft	Output errors are at	2.00 sigma
Reference Wellbore	Wellbore #1	Database:	EDM den0-adp01 Server Data
Reference Design:	Plan #1 (2-23-10)	Offset TVD Reference:	Offset Datum

Offset Design		M&T PAD Sec.10-T6N-R65W - M&T FARMS 10YD - Wellbore #1 - Plan #1 (2-23-10)										Offset Site Error:		0.0 ft			
Survey Program: 0-MWD														Offset Well Error:		0.0 ft	
Reference		Offset		Semi Major Axis		Distance								Warning			
Measured Depth (ft)	Vertical Depth (ft)	Measured Depth (ft)	Vertical Depth (ft)	Reference (ft)	Offset (ft)	Highside Toolface (°)	Offset Wellbore Centre		Between Centres (ft)	Between Ellipses (ft)	Minimum Separation (ft)	Separation Factor					
							+N/-S (ft)	+E/-W (ft)									
2,300.0	2,276.7	2,277.7	2,223.2	6.5	8.4	-68.38	-52.8	318.0	180.1	167.0	13.11	13.739					
2,400.0	2,374.0	2,374.8	2,311.3	7.0	9.2	-65.80	-64.2	357.4	202.2	188.3	13.96	14.489					
2,500.0	2,471.3	2,472.0	2,399.4	7.4	10.0	-63.74	-75.5	396.7	224.7	209.9	14.81	15.172					
2,600.0	2,568.5	2,569.1	2,487.5	7.9	10.9	-62.05	-86.9	436.1	247.4	231.7	15.67	15.793					
2,700.0	2,665.8	2,666.3	2,575.6	8.4	11.7	-60.64	-98.3	475.5	270.3	253.8	16.52	16.357					
2,800.0	2,763.1	2,763.4	2,663.7	8.9	12.6	-59.45	-109.7	514.8	293.3	275.9	17.39	16.870					
2,900.0	2,860.4	2,860.6	2,751.7	9.4	13.5	-58.44	-121.1	554.2	316.4	298.1	18.25	17.337					
3,000.0	2,957.6	2,957.7	2,839.8	9.9	14.4	-57.56	-132.5	593.6	339.6	320.5	19.12	17.764					
3,100.0	3,054.9	3,054.9	2,927.9	10.4	15.2	-56.80	-143.9	632.9	362.8	342.9	19.99	18.155					
3,200.0	3,152.2	3,152.0	3,016.0	10.9	16.1	-56.12	-155.2	672.3	386.1	365.3	20.86	18.514					
3,300.0	3,249.5	3,249.2	3,104.1	11.4	17.0	-55.53	-166.6	711.7	409.5	387.8	21.73	18.845					
3,400.0	3,346.7	3,346.3	3,192.2	11.9	17.9	-54.99	-178.0	751.1	432.9	410.3	22.60	19.150					
3,500.0	3,444.0	3,443.5	3,280.2	12.4	18.8	-54.52	-189.4	790.4	456.3	432.8	23.48	19.433					
3,600.0	3,541.3	3,540.6	3,368.3	12.9	19.6	-54.09	-200.8	829.8	479.8	455.4	24.36	19.695					
3,700.0	3,638.5	3,637.8	3,456.4	13.4	20.5	-53.70	-212.2	869.2	503.2	478.0	25.24	19.938					
3,800.0	3,735.8	3,734.9	3,544.5	13.9	21.4	-53.34	-223.6	908.5	526.7	500.6	26.12	20.165					
3,900.0	3,833.1	3,832.1	3,632.6	14.4	22.3	-53.01	-235.0	947.9	550.2	523.2	27.00	20.377					
4,000.0	3,930.4	3,929.2	3,720.7	14.9	23.2	-52.71	-246.3	987.3	573.8	545.9	27.89	20.576					
4,100.0	4,027.6	4,026.4	3,808.8	15.4	24.1	-52.44	-257.7	1,026.6	597.3	568.5	28.77	20.762					
4,200.0	4,124.9	4,123.5	3,896.8	15.9	25.0	-52.18	-269.1	1,066.0	620.9	591.2	29.65	20.936					
4,300.0	4,222.2	4,220.7	3,984.9	16.4	25.9	-51.95	-280.5	1,105.4	644.4	613.9	30.54	21.101					
4,400.0	4,319.5	4,317.8	4,073.0	16.9	26.8	-51.73	-291.9	1,144.7	668.0	636.6	31.43	21.256					
4,500.0	4,417.0	4,414.8	4,160.9	17.3	27.6	-51.77	-303.3	1,184.0	692.3	660.0	32.29	21.439					
4,600.0	4,515.2	4,511.0	4,248.2	17.6	28.5	-51.72	-314.5	1,223.0	718.7	685.7	33.01	21.775					
4,700.0	4,614.1	4,606.5	4,334.7	17.9	29.4	-51.52	-325.7	1,261.7	747.3	713.6	33.62	22.224					
4,800.0	4,713.4	4,701.1	4,420.5	18.2	30.3	-51.20	-336.8	1,300.1	778.0	743.9	34.15	22.783					
4,900.0	4,813.0	4,794.6	4,505.3	18.4	31.1	-50.78	-347.8	1,338.0	811.0	776.4	34.58	23.450					
5,000.0	4,912.9	4,887.0	4,589.1	18.5	32.0	-50.30	-358.6	1,375.4	846.3	811.4	34.94	24.222					
5,100.0	5,012.9	4,978.2	4,671.7	18.7	32.8	80.18	-369.3	1,412.4	884.0	848.7	35.21	25.108					
5,200.0	5,112.9	5,068.9	4,753.9	18.8	33.7	81.31	-379.9	1,449.1	922.7	887.4	35.31	26.134					
5,300.0	5,212.9	5,159.5	4,836.1	18.9	34.5	82.35	-390.6	1,485.8	961.7	926.3	35.43	27.142					
5,400.0	5,312.9	5,250.2	4,918.4	19.0	35.3	83.31	-401.2	1,522.6	1,001.0	965.5	35.58	28.131					
5,500.0	5,412.9	5,346.1	5,005.3	19.1	36.2	84.25	-412.4	1,561.4	1,040.5	1,004.8	35.75	29.103					
5,600.0	5,512.9	5,487.0	5,134.8	19.3	37.2	85.42	-427.9	1,614.8	1,077.7	1,041.8	35.91	30.008					
5,700.0	5,612.9	5,633.8	5,272.3	19.4	38.1	86.40	-442.0	1,663.8	1,110.6	1,074.5	36.11	30.754					
5,800.0	5,712.9	5,785.8	5,417.5	19.5	38.9	87.20	-454.7	1,707.5	1,138.9	1,102.6	36.36	31.321					
5,900.0	5,812.9	5,942.6	5,569.4	19.6	39.6	87.83	-465.4	1,744.6	1,162.4	1,125.7	36.65	31.717					
6,000.0	5,912.9	6,103.4	5,727.1	19.8	40.1	88.31	-474.0	1,774.4	1,180.8	1,143.8	36.96	31.943					
6,100.0	6,012.9	6,267.2	5,889.4	19.9	40.5	88.64	-480.2	1,795.9	1,193.8	1,156.5	37.29	32.013					
6,200.0	6,112.9	6,433.1	6,054.7	20.0	40.8	88.83	-483.9	1,808.6	1,201.4	1,163.8	37.63	31.927					
6,300.0	6,212.9	6,591.3	6,212.9	20.2	41.0	88.88	-484.9	1,812.1	1,203.5	1,165.5	37.97	31.696					
6,400.0	6,312.9	6,691.3	6,312.9	20.3	41.0	88.88	-484.9	1,812.1	1,203.5	1,165.3	38.25	31.463					
6,500.0	6,412.9	6,791.3	6,412.9	20.4	41.1	88.88	-484.9	1,812.1	1,203.5	1,165.0	38.53	31.232					
6,600.0	6,512.9	6,891.3	6,512.9	20.6	41.2	88.88	-484.9	1,812.1	1,203.5	1,164.7	38.82	31.002					
6,700.0	6,612.9	6,991.3	6,612.9	20.7	41.2	88.88	-484.9	1,812.1	1,203.5	1,164.4	39.11	30.772					
6,800.0	6,712.9	7,091.3	6,712.9	20.9	41.3	88.88	-484.9	1,812.1	1,203.5	1,164.1	39.40	30.544					
6,900.0	6,812.9	7,191.3	6,812.9	21.0	41.4	88.88	-484.9	1,812.1	1,203.5	1,163.8	39.70	30.317					
7,000.0	6,912.9	7,291.3	6,912.9	21.2	41.5	88.88	-484.9	1,812.1	1,203.5	1,163.5	40.00	30.091					
7,100.0	7,012.9	7,391.3	7,012.9	21.3	41.5	88.88	-484.9	1,812.1	1,203.5	1,163.2	40.30	29.866					
7,200.0	7,112.9	7,491.3	7,112.9	21.5	41.6	88.88	-484.9	1,812.1	1,203.5	1,162.9	40.60	29.643					
7,300.0	7,212.9	7,591.3	7,212.9	21.6	41.7	88.88	-484.9	1,812.1	1,203.5	1,162.6	40.91	29.421					
7,400.0	7,312.9	7,691.3	7,312.9	21.8	41.8	88.88	-484.9	1,812.1	1,203.5	1,162.3	41.22	29.200					

CC - Min centre to center distance or convergent point, SF - min separation factor, ES - min ellipse separation

Company:	Synergy Resources	Local Co-ordinate Reference:	Well M&T FARMS 10TD
Project:	SEC.10-T6N-65W	TVD Reference:	10TD @ 4759.0ft (Original Well Elev)
Reference Site:	M&T PAD Sec.10-T6N-R65W	MD Reference:	10TD @ 4759.0ft (Original Well Elev)
Site Error:	0.0ft	North Reference:	True
Reference Well:	M&T FARMS 10TD	Survey Calculation Method:	Minimum Curvature
Well Error:	0.0ft	Output errors are at	2.00 sigma
Reference Wellbore	Wellbore #1	Database:	EDM den0-adp01 Server Data
Reference Design:	Plan #1 (2-23-10)	Offset TVD Reference:	Offset Datum

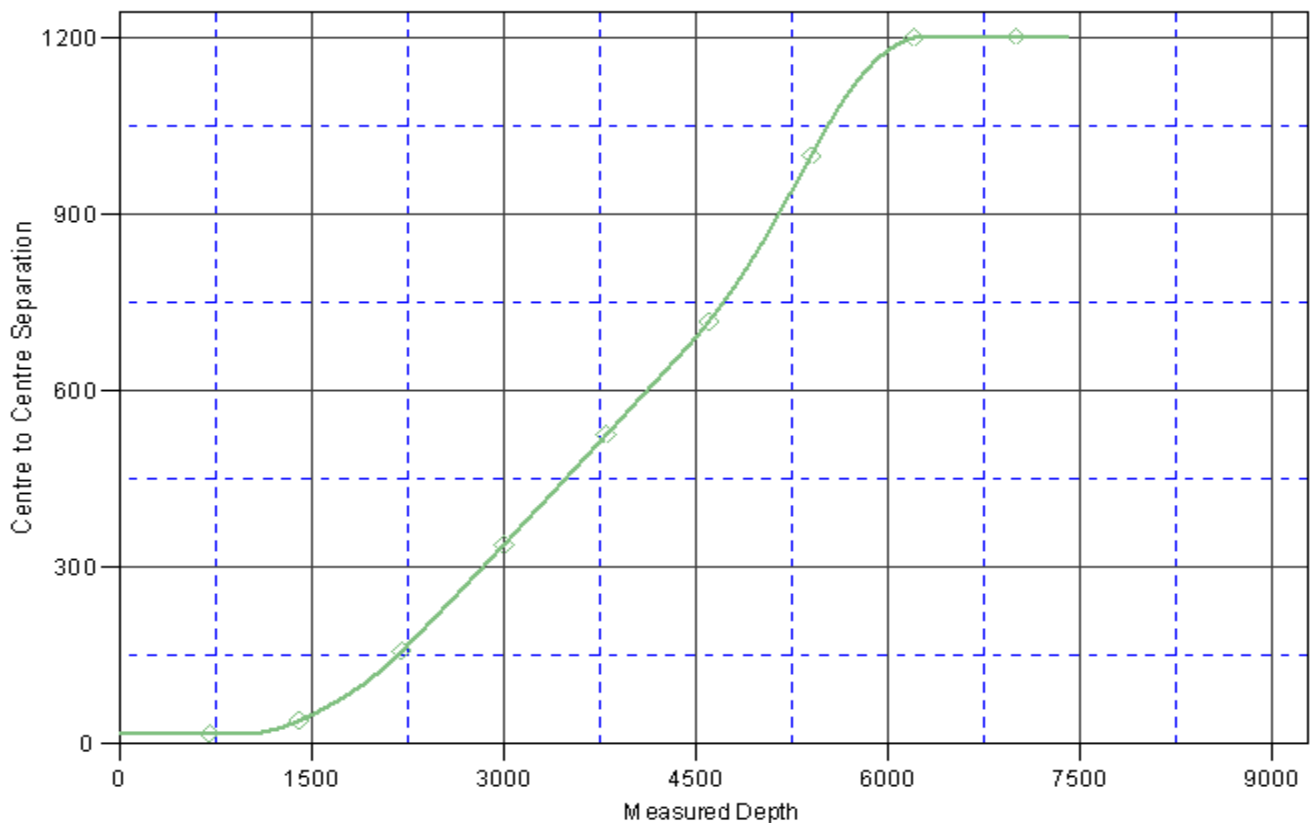
Offset Design M&T PAD Sec.10-T6N-R65W - M&T FARMS 10YD - Wellbore #1 - Plan #1 (2-23-10)												Offset Site Error:	0.0 ft
Survey Program: 0-MWD												Offset Well Error:	0.0 ft
Reference	Offset	Semi Major Axis		Distance									Warning
Measured Depth (ft)	Vertical Depth (ft)	Measured Depth (ft)	Vertical Depth (ft)	Reference (ft)	Offset (ft)	Highside Toolface (°)	Offset Wellbore Centre +N/-S (ft)	+E/-W (ft)	Between Centres (ft)	Between Ellipses (ft)	Minimum Separation (ft)	Separation Factor	
7,407.1	7,320.0	7,698.4	7,320.0	21.8	41.8	88.88	-484.9	1,812.1	1,203.5	1,162.3	41.24	29.185	

Company: Synergy Resources
Project: SEC.10-T6N-65W
Reference Site: M&T PAD Sec.10-T6N-R65W
Site Error: 0.0ft
Reference Well: M&T FARMS 10TD
Well Error: 0.0ft
Reference Wellbore: Wellbore #1
Reference Design: Plan #1 (2-23-10)

Local Co-ordinate Reference: Well M&T FARMS 10TD
TVD Reference: 10TD @ 4759.0ft (Original Well Elev)
MD Reference: 10TD @ 4759.0ft (Original Well Elev)
North Reference: True
Survey Calculation Method: Minimum Curvature
Output errors are at 2.00 sigma
Database: EDM den0-adp01 Server Data
Offset TVD Reference: Offset Datum

Reference Depths are relative to 10TD @ 4759.0ft (Original Well Elev) Coordinates are relative to: M&T FARMS 10TD
Offset Depths are relative to Offset Datum Coordinate System is US State Plane 1983, Colorado Northern Zone
Central Meridian is 105° 30' 0.000 W ° Grid Convergence at Surface is: 0.55°

Ladder Plot



LEGEND

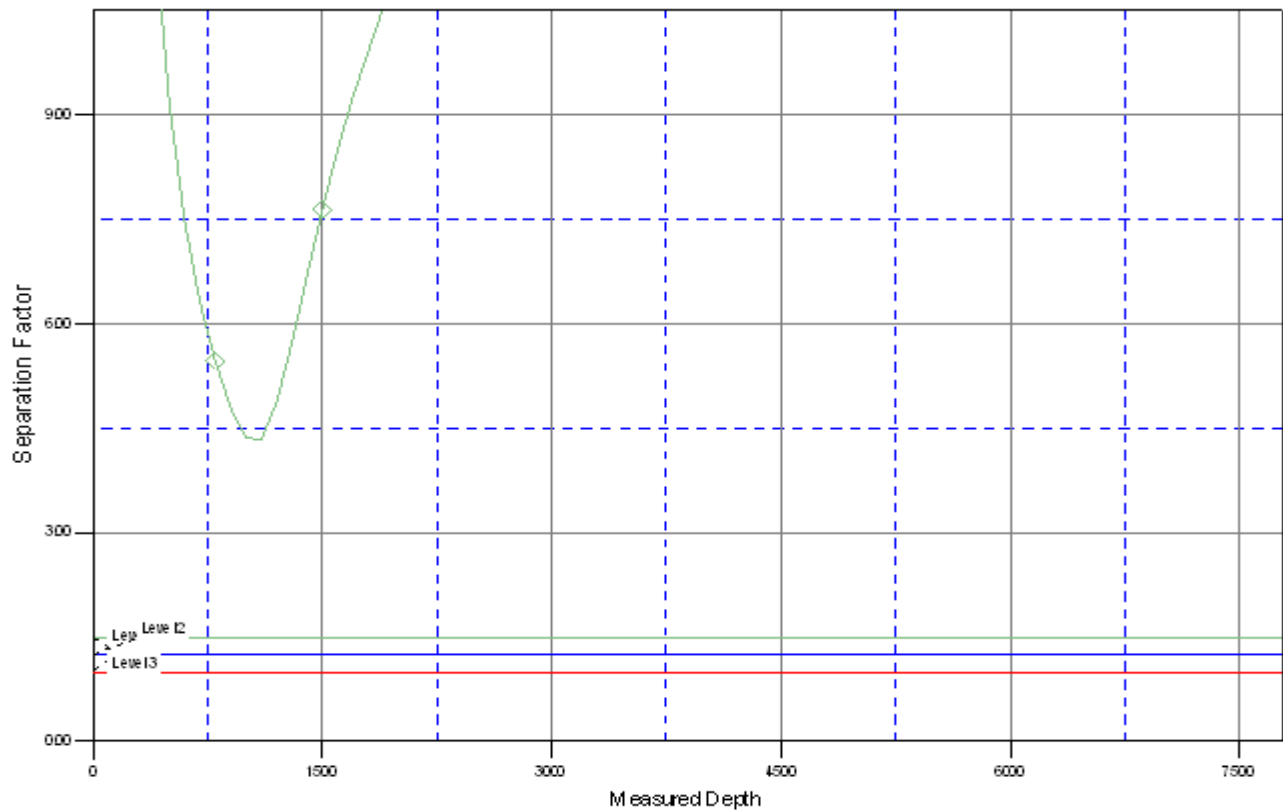
ARMS 10 YD, Wellbore #1, Plan #1 (2-23-10) \V0

Company: Synergy Resources
Project: SEC.10-T6N-65W
Reference Site: M&T PAD Sec.10-T6N-R65W
Site Error: 0.0ft
Reference Well: M&T FARMS 10TD
Well Error: 0.0ft
Reference Wellbore: Wellbore #1
Reference Design: Plan #1 (2-23-10)

Local Co-ordinate Reference: Well M&T FARMS 10TD
TVD Reference: 10TD @ 4759.0ft (Original Well Elev)
MD Reference: 10TD @ 4759.0ft (Original Well Elev)
North Reference: True
Survey Calculation Method: Minimum Curvature
Output errors are at 2.00 sigma
Database: EDM den0-adp01 Server Data
Offset TVD Reference: Offset Datum

Reference Depths are relative to 10TD @ 4759.0ft (Original Well Elev) Coordinates are relative to: M&T FARMS 10TD
Offset Depths are relative to Offset Datum Coordinate System is US State Plane 1983, Colorado Northern Zone
Central Meridian is 105° 30' 0.000 W ° Grid Convergence at Surface is: 0.55°

Separation Factor Plot



LEGEND

ARMS 10 YD, Wellbore #1, Plan #1 (2-23-10) \V0