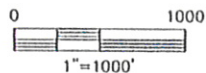
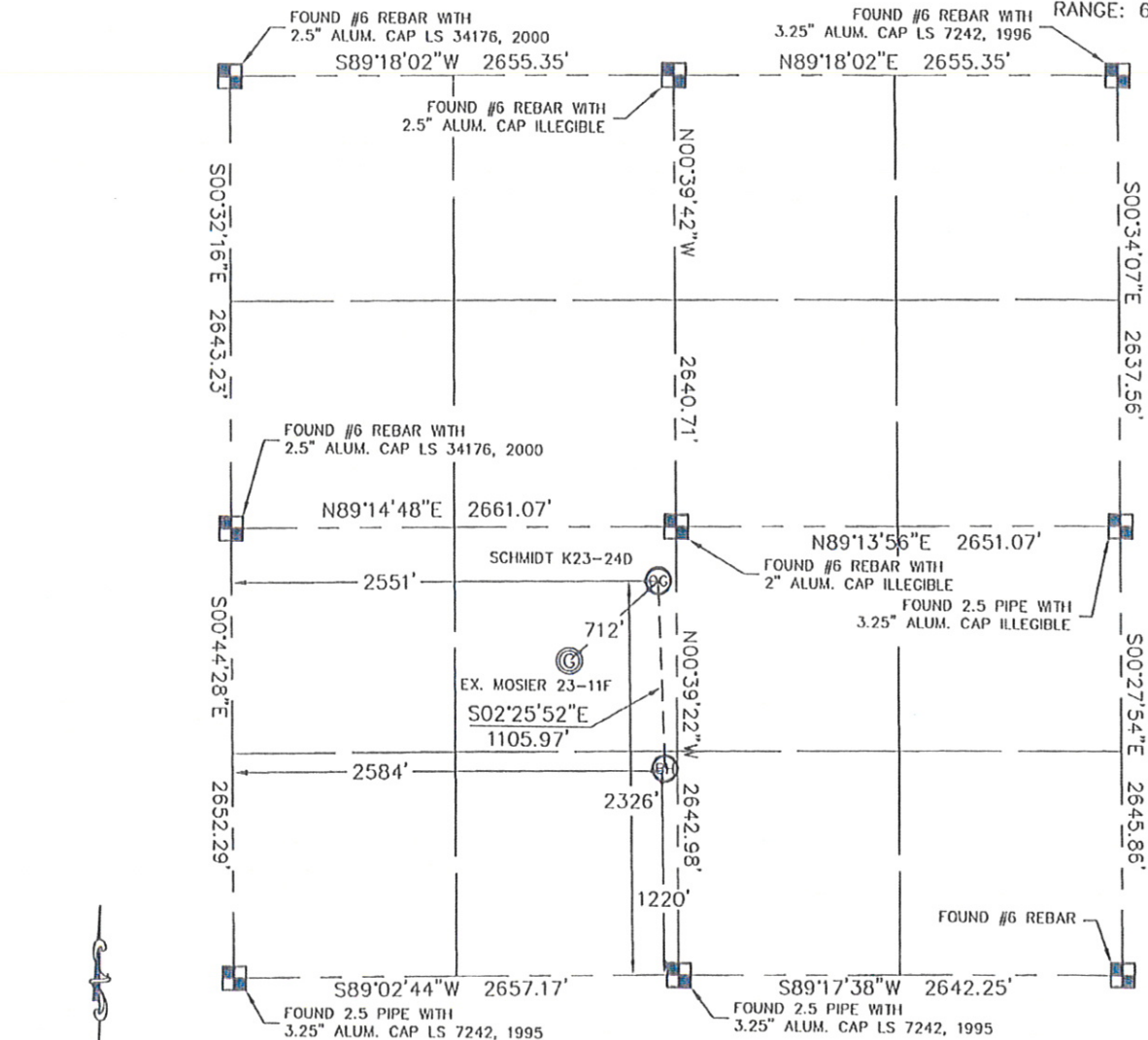


KING SURVEYORS, INC. 650 E. GARDEN DR. WINDSOR, CO 80550

WELL LOCATION CERTIFICATE

THIS MAP DOES NOT REPRESENT A BOUNDARY SURVEY

SECTION: 23
TOWNSHIP: 4N
RANGE: 66W



In accordance with a request from JOE MARTIN with Noble Energy Inc., King Surveyors Inc. has determined the surface location of the SCHMIDT K23-24D to be 2326' from the SOUTH line and 2551' from the WEST line and the bottom hole to be 1220' from the SOUTH line and 2584' from the WEST line as measured at right angles from the section line of Section 23, Township 4 North, Range 66 West of the Sixth Principal Meridian, County of Weld, State of Colorado.

I hereby state that this Well Location Certificate was prepared by me, or under my direct supervision, that the fieldwork was completed on 9-23-09, for and on behalf of Noble Energy Inc.. That this is not a Land Survey Plat or an Improvement Survey Plat, and that it is not to be relied upon for establishment of fence, building, or other future improvement lines.


NOTE:

- 1) Bearings shown are Grid Bearings of the Colorado State Plane Coordinate System, North Zone, North American Datum, 1983/2007. The lineal dimensions as contained herein are based upon the "U.S. Survey Foot."
- 2) Ground elevations are based on an observed GPS elevation (NAVD 1988 DATUM).
- 3) NEAREST EXISTING WELL: MOSIER 23-11F 712' SOUTHWEST
- 4) IMPROVEMENTS: See VISIBLE IMPROVEMENTS exhibit for all visible improvements within 400' of well head.
- 5) SURFACE USE: PASTURE AND CROP FIELD

NOTE

According to Colorado law, you must commence any legal action based upon any defect in this W.L.C. within three years after you discover such defect. In no event, may any action based upon any defect in this survey be commenced more than ten years after the date of the certificate shown hereon. (13-80-105 C.R.S.)

LEGEND

-  = ALIQUOT MONUMENT AS DESCRIBED
-  = CALCULATED POSITION

SURFACE LOCATION
LATITUDE: 40.29655°N
LONGITUDE: 104.74483°W
PDOP: 1.2
ELEV: 4726
1/4, 1/4: NE1/4SW1/4
NEAREST PROPERTY LINE: 109' EAST

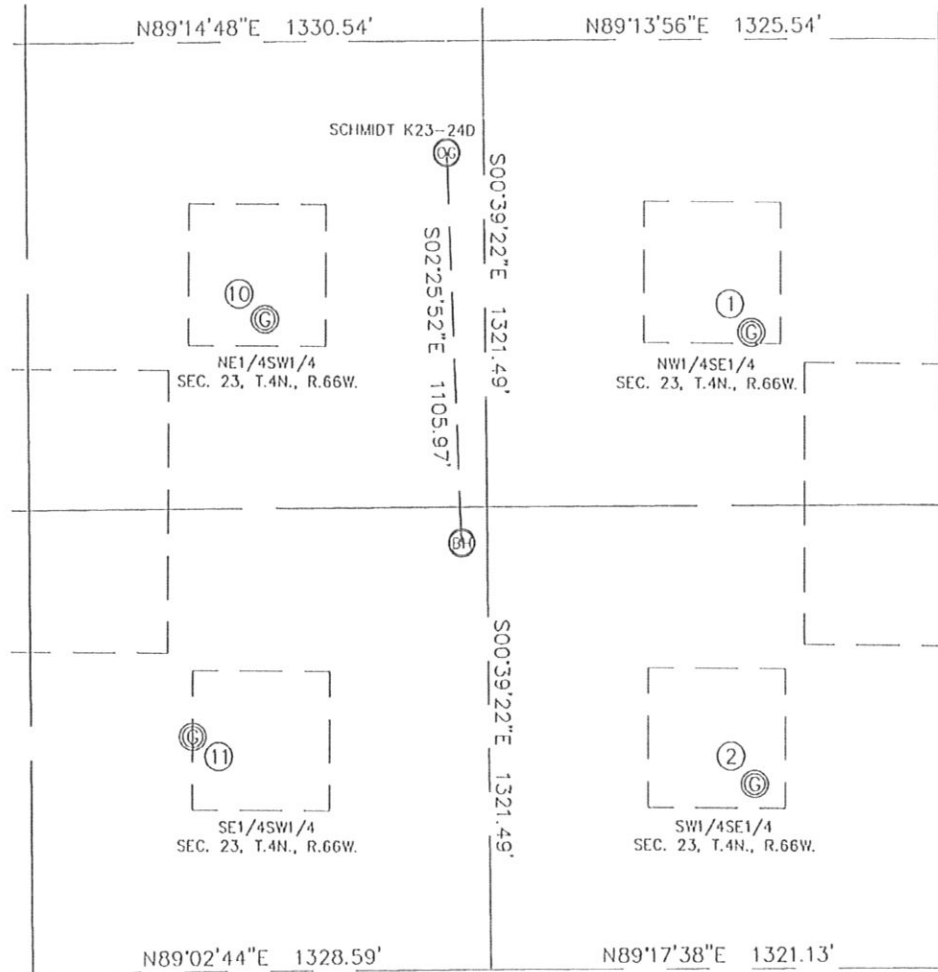
BOTTOM HOLE
LATITUDE: 40.29351°N
LONGITUDE: 104.74469°W

Steven A. Lundberg, 2009
King Surveyors, Inc.
Licensed Land Surveyor No. 34995
State of Colorado

PROJECT#: 2009323

SITE SKETCH

SECTION: 23
TOWNSHIP: 4N
RANGE: 66W



①
HSR-VICKI 10-23
NW1/4SE1/4
1813' FSL
1873' FEL
LAT-40.29515N
LONG-104.74165W
PDOP: 1.2
ELEV: 4730

②
HSR-STEIN 15-23
SW1/4SE1/4
529' FSL
1873' FEL
LAT-40.29162N
LONG-104.74165W
PDOP: 1.3
ELEV: 4736

⑩
MOSIER 23-11F
NE1/4SW1/4
1858' FSL
2016' FWL
LAT-40.29525N
LONG-104.74674W
PDOP: 1.6
ELEV: 4728

⑪
MOSIER 23-14F
SE1/4SW1/4
676' FSL
1795' FWL
LAT-40.29200N
LONG-104.74751W
PDOP: 1.5
ELEV: 4730

