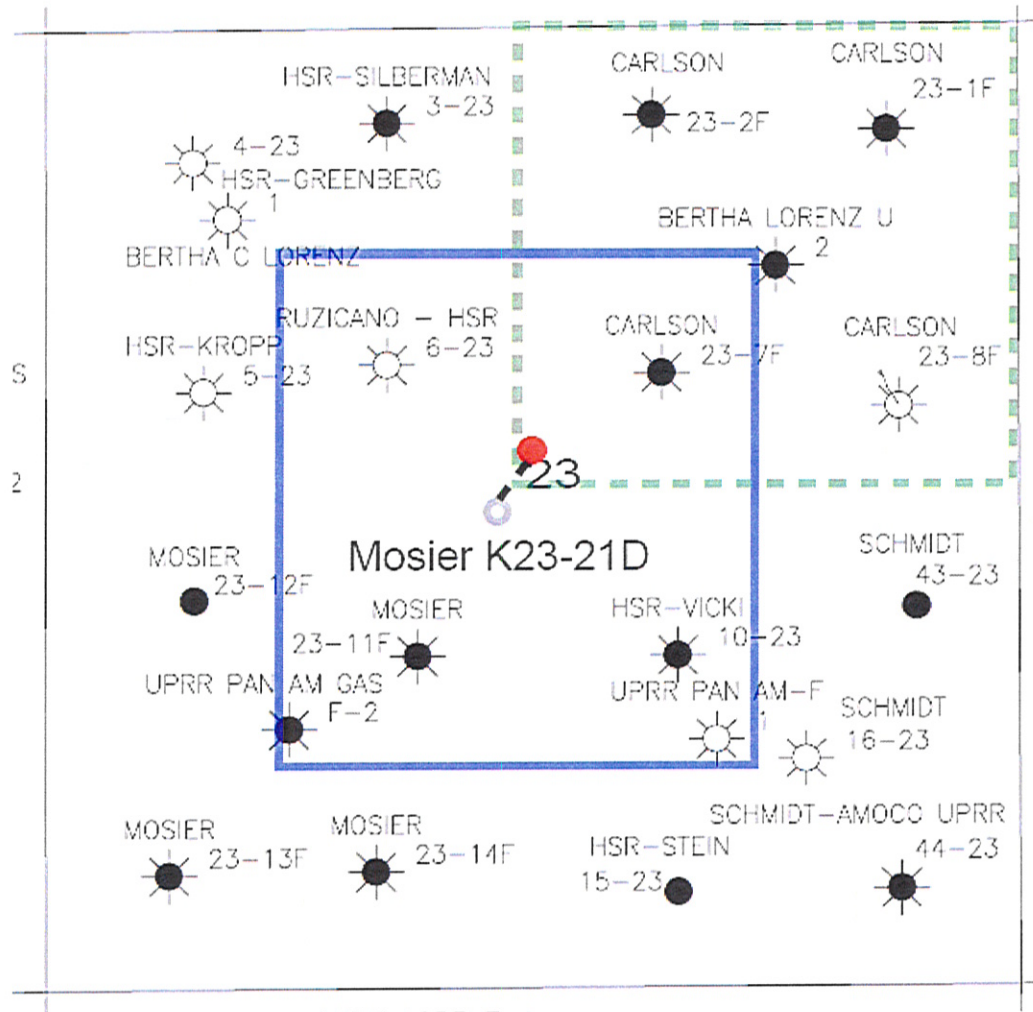


Mosier K23-21D
SWNE, Section 23, T4N, R66W



LEGEND



Proposed 160 acre Spacing Unit



Bottom Hole Located SWNE, Sec 23, T4N, R66W

The governmental $\frac{1}{4}$ Section has less than 8 bottom hole wells producing from the Codell, Niobrara, & J-Sand Formations.

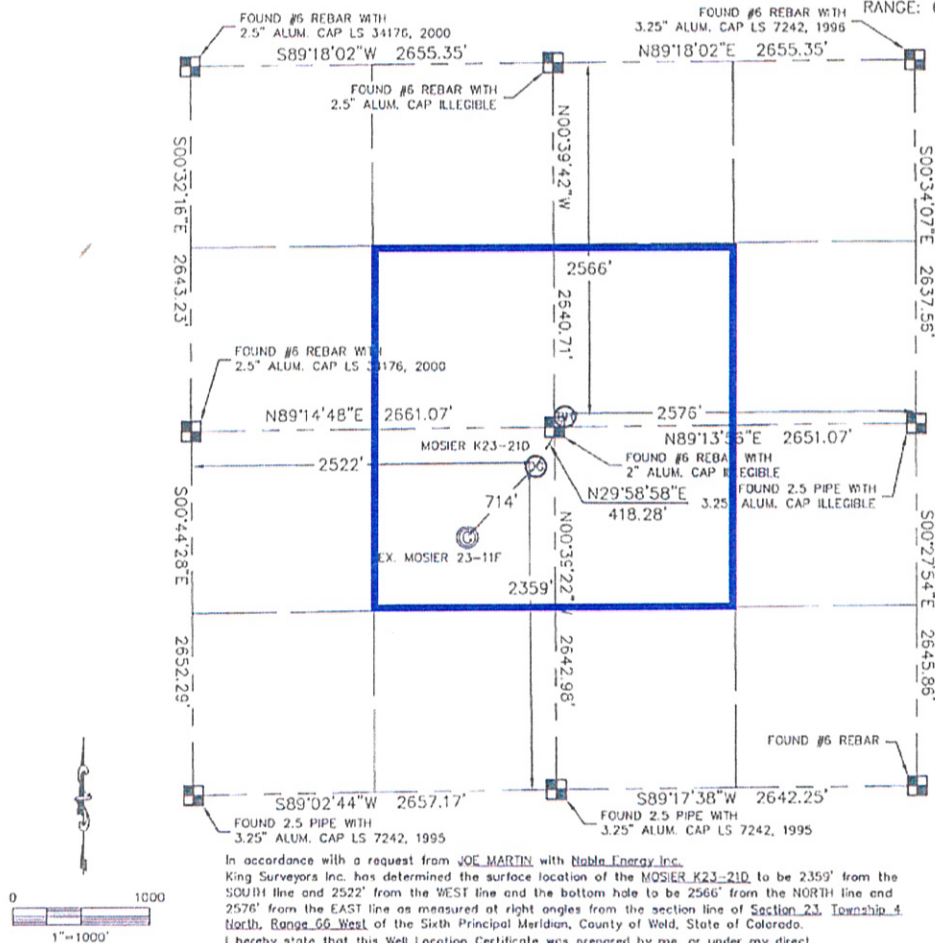
Proposed 318 Ae Spacing Unit

KING SURVEYORS, INC. 650 E. GARDEN DR. WINDSOR, CO 80550

WELL LOCATION CERTIFICATE

THIS MAP DOES NOT REPRESENT A BOUNDARY SURVEY

SECTION: 23
TOWNSHIP: 4N
RANGE: 66W



In accordance with a request from JOE MARTIN with Noble Energy Inc. King Surveyors Inc. has determined the surface location of the MOSIER K23-210 to be 2359' from the SOUTH line and 2522' from the WEST line and the bottom hole to be 2566' from the NORTH line and 2576' from the EAST line as measured at right angles from the section line of Section 23, Township 4 North, Range 66 West of the Sixth Principal Meridian, County of Weld, State of Colorado. I hereby state that this Well Location Certificate was prepared by me, or under my direct supervision, that the fieldwork was completed on 9-23-09, for and on behalf of Noble Energy Inc. That this is not a Land Survey Plat or an Improvement Survey Plat, and that it is not to be relied upon for establishment of fence, building, or other future improvement lines.

NOTE:

- 1) Bearings shown are Grid Bearings of the Colorado State Plane Coordinate System, North Zone, North American Datum 1983/2007. The lineal dimensions as contained herein are based upon the "U.S. Survey Foot."
- 2) Ground elevations are based on an observed GPS elevation (NAVD 1988 DATUM).
- 3) NEAREST EXISTING WELL: MOSIER 23-11F 714' SOUTHWEST
- 4) IMPROVEMENTS: See VISIBLE IMPROVEMENTS exhibit for all visible improvements within 400' of well head.
- 5) SURFACE USE: PASTURE AND CROP FIELD

NOTE:

According to Colorado law, you must commence any legal action based upon any defect in this W.L.C. within three years after you discover such defect. In no event, may any action based upon any defect in this survey be commenced more than ten years after the date of the certificate shown hereon. (13-80-105 C.R.S.)

LEGEND

- = ALIQUOT MONUMENT AS DESCRIBED
- = CALCULATED POSITION

SURFACE LOCATION
LATITUDE: 40.296647N
LONGITUDE: 104.744937W
PDOP: 1.2
ELEV: 4726
1/4, 1/4: NE1/4SW1/4
NEAREST PROPERTY LINE: 138' EAST

BOTTOM HOLE
LATITUDE: 40.297637N
LONGITUDE: 104.74417W

Steven A. Lund On behalf of King Surveyors, Inc.
Licensed Land Surveyor No. 34995
State of Colorado

PROJECT#: 2009323