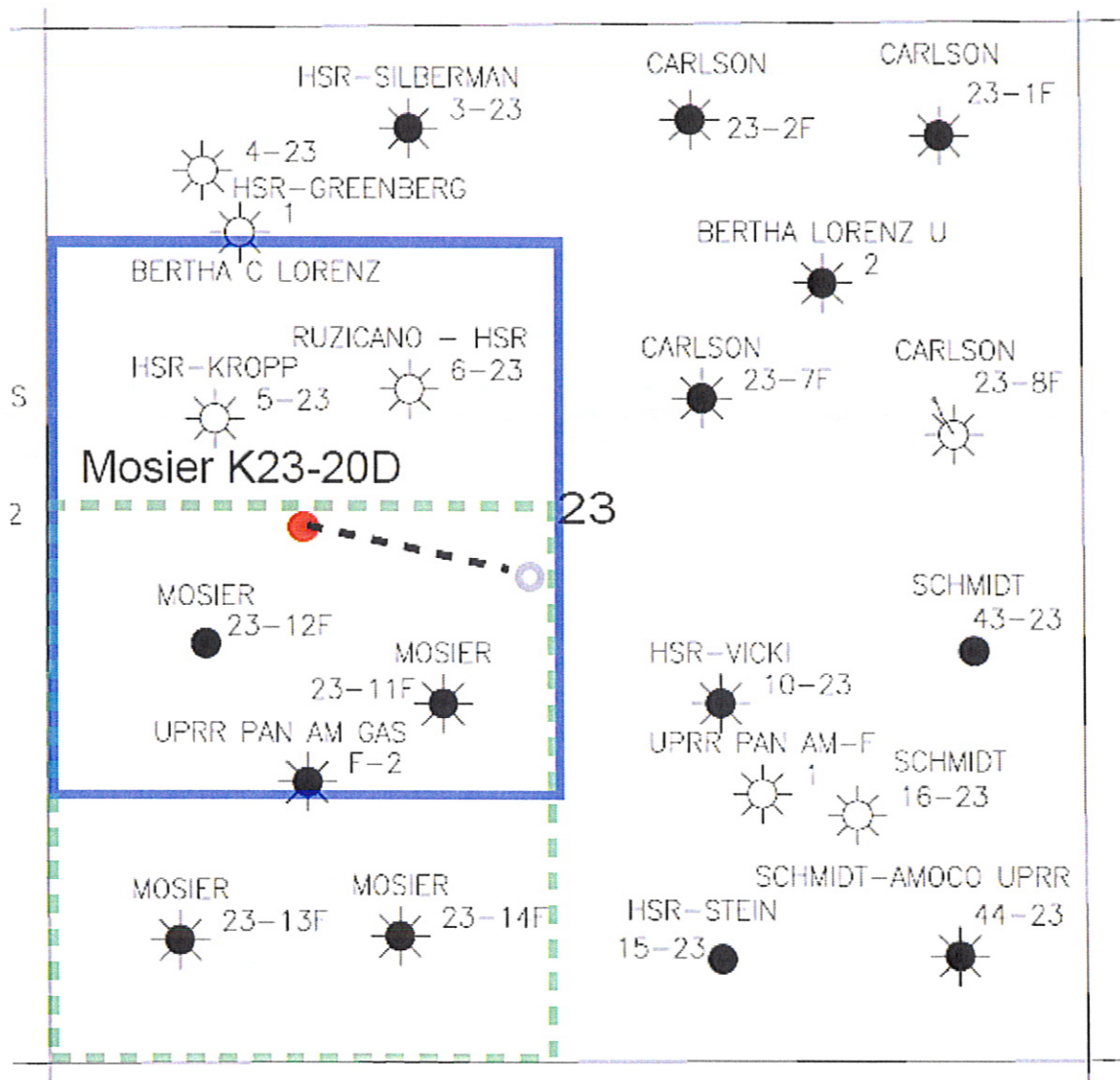


**Mosier K23-20D**  
**NESW, Section 23, T4N, R66W**



**LEGEND**



Proposed 160 acre Spacing Unit



Bottom Hole Located NESW, Sec 23, T4N, R66W

The governmental  $\frac{1}{4}$  Section has less than 8 bottom hole wells producing from the Codell, Niobrara, & J-Sand Formations.

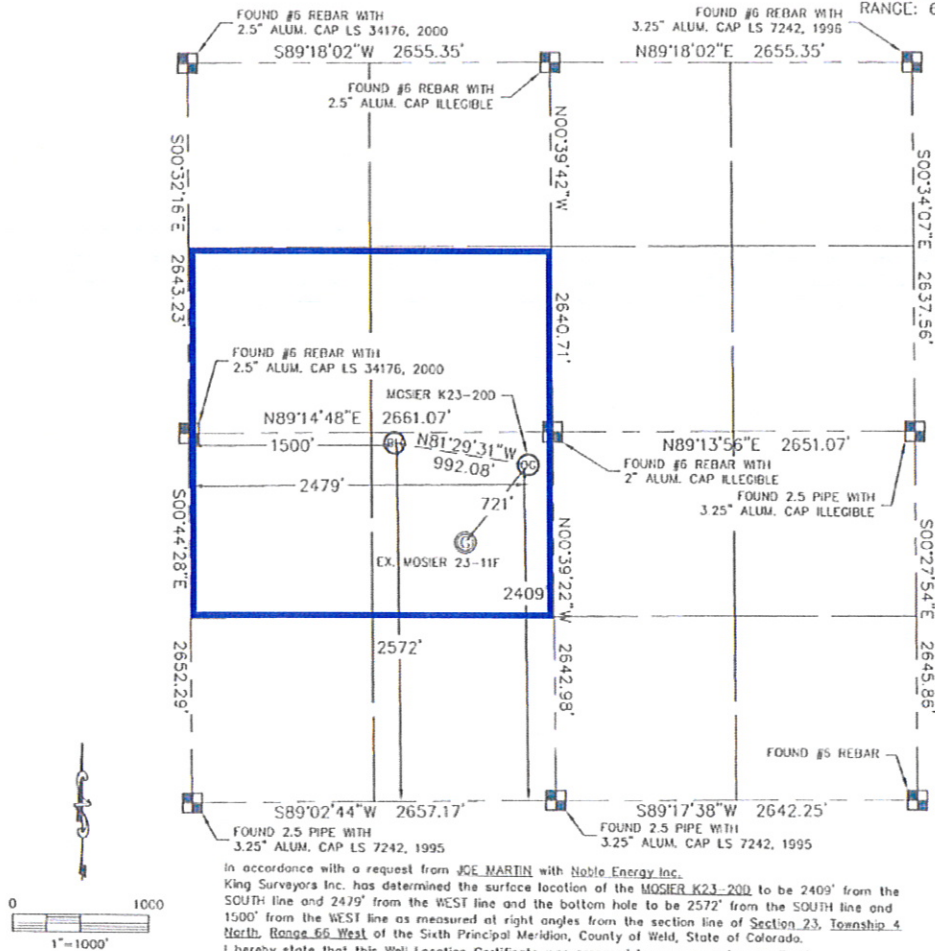
# Proposed 318 Ae Spacing Unit

KING SURVEYORS, INC. 650 E. GARDEN DR. WINDSOR, CO 80550

## WELL LOCATION CERTIFICATE

THIS MAP DOES NOT REPRESENT A BOUNDARY SURVEY

SECTION: 23  
TOWNSHIP: 4N  
RANGE: 66W



In accordance with a request from JOE MARTIN with Noble Energy Inc., King Surveyors Inc. has determined the surface location of the MOSIER K23-200 to be 2409' from the SOUTH line and 2479' from the WEST line and the bottom hole to be 2572' from the SOUTH line and 1500' from the WEST line as measured at right angles from the section line of Section 23, Township 4 North, Range 66 West of the Sixth Principal Meridian, County of Weld, State of Colorado. I hereby state that this Well Location Certificate was prepared by me, or under my direct supervision, that the fieldwork was completed on 9-23-09, for and on behalf of Noble Energy Inc., That this is not a Land Survey Plot or an Improvement Survey Plot, and that it is not to be relied upon for establishment of fence, building, or other future improvement lines.

### NOTE:

- 1) Bearings shown are Grid Bearings of the Colorado State Plane Coordinate System, North Zone, North American Datum 1983/2007. The lineal dimensions as contained herein are based upon the "U.S. Survey Foot."
- 2) Ground elevations are based on an observed GPS elevation (NAVD 1988 DATUM).
- 3) NEAREST EXISTING WELL: MOSIER 23-11F 721' SOUTHWEST
- 4) IMPROVEMENTS: See VISIBLE IMPROVEMENTS exhibit for all visible improvements within 400' of well head.
- 5) SURFACE USE: PASTURE AND CROP FIELD

### SURFACE LOCATION

LATITUDE: 40.29677N  
LONGITUDE: 104.74509W  
PODP: 1.2  
ELEV: 4726  
1/4, 1/4: NE1/4SW1/4

### BOTTOM HOLE

LATITUDE: 40.29720N  
LONGITUDE: 104.74860W

NEAREST PROPERTY LINE: 128' NORTH

### NOTE:

According to Colorado law, you must commence any legal action based upon any defect in this W.L.C. within three years after you discover such defect. In no event, may any action based upon any defect in this survey be commenced more than ten years after the date of the certificate shown hereon. (13-80-105 C.R.S.)

### LEGEND

- = ADJUTANT MONUMENT AS DESCRIBED
- = CALCULATED POSITION

Steven A. Lutz, 2009  
in behalf of King Surveyors, Inc.  
Licensed Land Surveyor, No. 34995  
State of Colorado

PROJECT#: 2009323