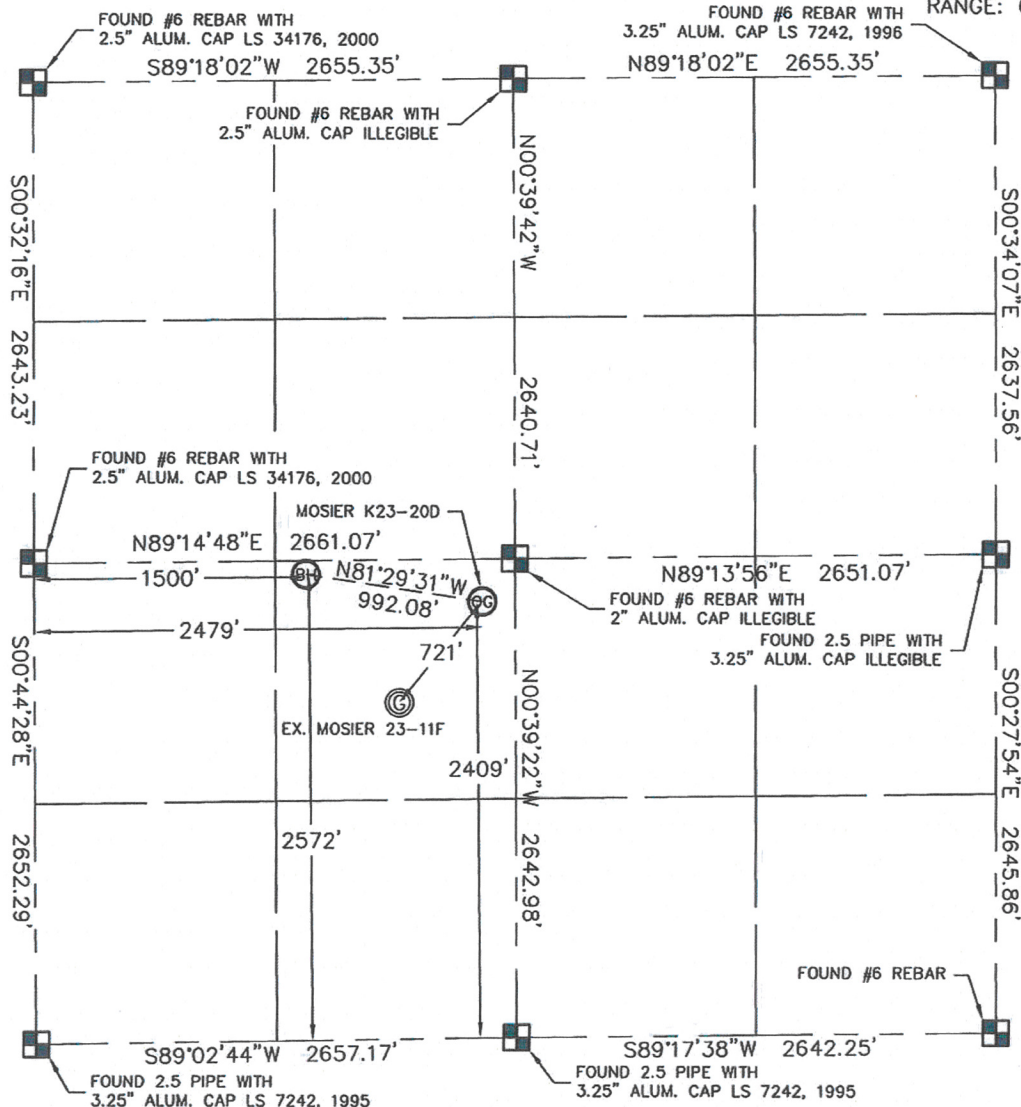


WELL LOCATION CERTIFICATE

THIS MAP DOES NOT REPRESENT A BOUNDARY SURVEY

SECTION: 23
TOWNSHIP: 4N
RANGE: 66WIn accordance with a request from JOE MARTIN with Noble Energy Inc.King Surveyors Inc. has determined the surface location of the MOSIER K23-20D to be 2409' from the SOUTH line and 2479' from the WEST line and the bottom hole to be 2572' from the SOUTH line and 1500' from the WEST line as measured at right angles from the section line of Section 23, Township 4 North, Range 66 West of the Sixth Principal Meridian, County of Weld, State of Colorado.I hereby state that this Well Location Certificate was prepared by me, or under my direct supervision, that the fieldwork was completed on 9-23-09, for and on behalf of Noble Energy Inc. That this is not a Land Survey Plat or an Improvement Survey Plat, and that it is not to be relied upon for establishment of fence, building, or other future improvement lines.

NOTE:

- 1) Bearings shown are Grid Bearings of the Colorado State Plane Coordinate System, North Zone, North American Datum 1983/2007. The lineal dimensions as contained herein are based upon the "U.S. Survey Foot."
- 2) Ground elevations are based on an observed GPS elevation (NAVD 1988 DATUM).
- 3) NEAREST EXISTING WELL: MOSIER 23-11F 721' SOUTHWEST
- 4) IMPROVEMENTS: See VISIBLE IMPROVEMENTS exhibit for all visible improvements within 400' of well head.
- 5) SURFACE USE: PASTURE AND CROP FIELD

SURFACE LOCATION

LATITUDE: 40.29677°N
 LONGITUDE: 104.74509°W
 PDOP: 1.2
 ELEV: 4726
 1/4, 1/4: NE1/4SW1/4

BOTTOM HOLE

LATITUDE: 40.29720°N
 LONGITUDE: 104.74860°W

NEAREST PROPERTY LINE: 128' NORTH

NOTE

According to Colorado law, you must commence any legal action based upon any defect in this W.L.C. within three years after you discover such defect. In no event, may any action based upon any defect in this survey be commenced more than ten years after the date of the certificate shown hereon. (13-80-105 C.R.S.)

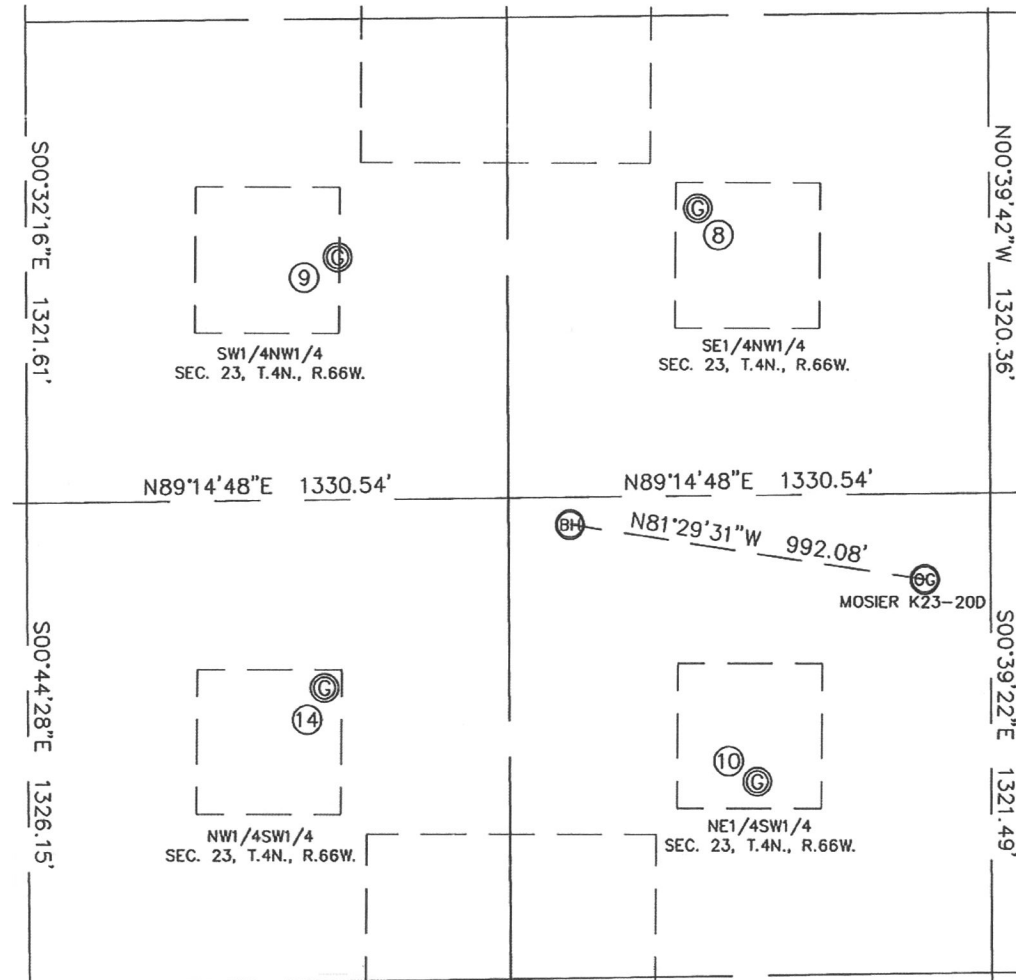
LEGEND

- = ALIQUOT MONUMENT AS DESCRIBED
 = CALCULATED POSITION

Steven A. Lunde in behalf of King Surveyors, Inc.
 Licensed Land Surveyor, No. 34995
 State of Colorado

PROJECT#: 2009323

SECTION: 23
TOWNSHIP: 4N
RANGE: 66W



- | ⑧ | ⑨ | ⑩ | ⑭ |
|-------------------|-------------------|-------------------|-------------------|
| HSR-RUZICANO 6-23 | HSR-KROPP 5-23 | MOSIER 23-11F | MOSIER 23-12F |
| SE1/4NW1/4 | SW1/4NW1/4 | NE1/4SW1/4 | NW1/4SW1/4 |
| 1851' FNL | 1976' FNL | 1858' FSL | 2135' FSL |
| 1857' FWL | 861' FWL | 2016' FWL | 820' FWL |
| LAT=-40.29958"N | LAT=-40.29922"N | LAT=-40.29525"N | LAT=-40.29598"N |
| LONG=-104.74732"W | LONG=-104.75089"W | LONG=-104.74674"W | LONG=-104.75103"W |
| PDOP: 1.2 | PDOP: 1.3 | PDOP: 1.6 | PDOP: 2.4 |
| ELEV: 4725 | ELEV: 4730 | ELEV: 4728 | ELEV: 4731 |

