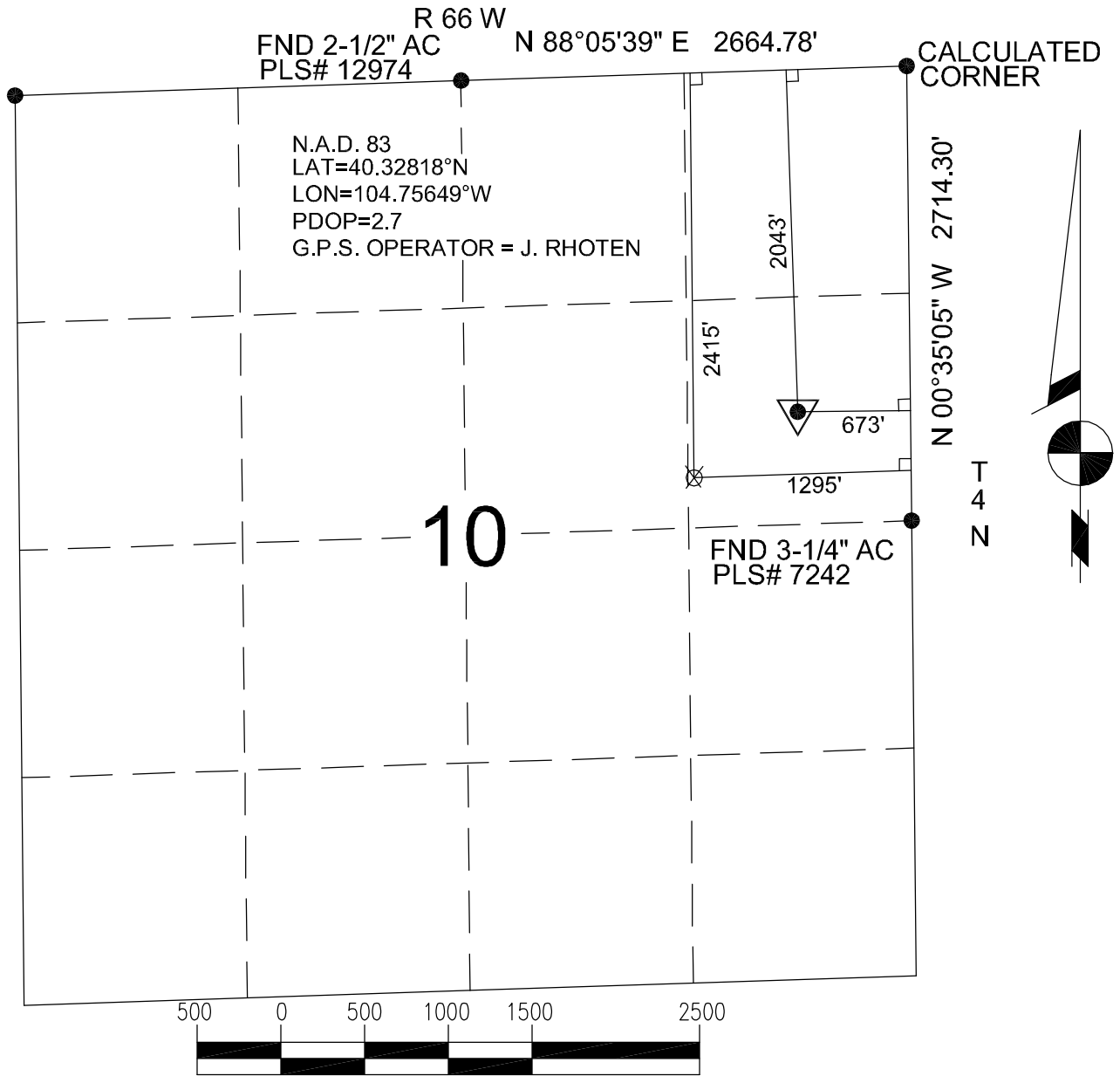


BASIS OF BEARINGS: THE EAST LINE OF THE NE 1/4 OF SECTION 10, AS SHOWN HEREON.



Power Surveying Co., Inc. of Frederick, Colorado has in accordance with a request from SHERRY GLASS for KP KAUFFMAN determined the location of WETCO FARMS 8-10-24 to be 2043' FNL & 673' FEL Section 10, Township 4 NORTH Range 66 WEST of the Sixth Principal Meridian, WELD County, Colorado

LOCATION NOTES

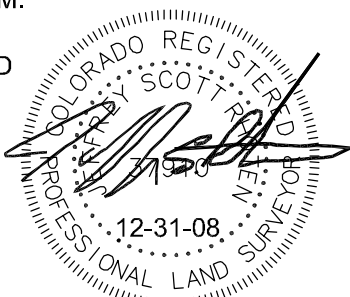
LOCATION FALLS IN: CORN FIELD
IMPROVEMENTS: AN EXISTING WELL 50 FEET N-E OF LOCATION

ELEVATION DETERMINED FROM NAVD 1988 DATUM.
GROUND ELEVATION = 4718'

DISTANCES AND BEARINGS ARE FIELD MEASURED
UNLESS OTHERWISE NOTED.

LEGEND

- SECTION CORNER (AS NOTED)
- ▼ PROPOSED WELL LOCATION
- ⊗ BOTTOM OF HOLE LOCATION.



7800 MILLER DRIVE UNIT C
FREDERICK, COLORADO 80504
303-702-1617

Jeffery Scott Rhoten
COLORADO P.L.S. #37910

FIELD DATE: 7-12-07 WO# 501-06-1133A
DATE OF COMPLETION: 12-31-08