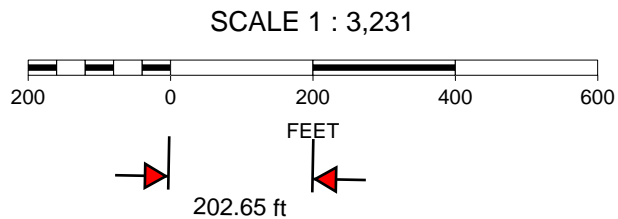
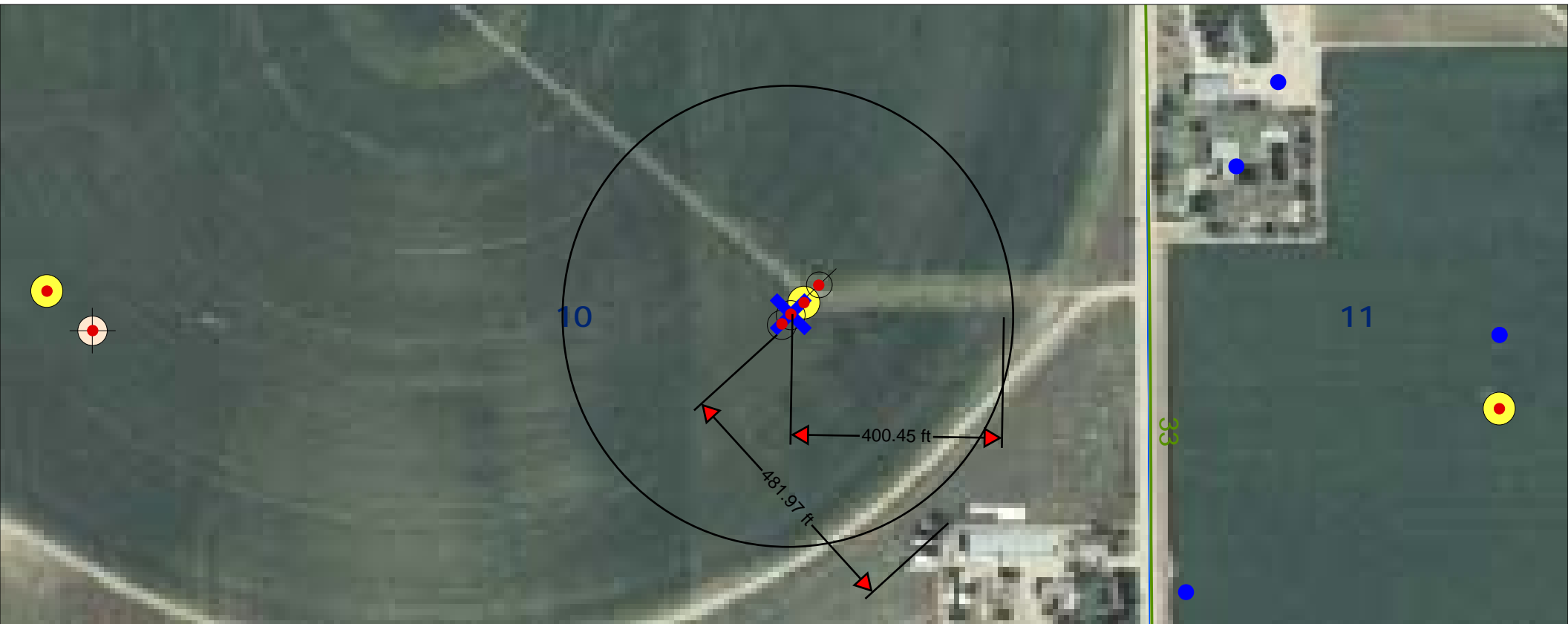


Visible improvements in 400: Existing well bore (Matsushima #1-5, API# 05-123-11364),
staked location for Wetco Farms #8-10-24, irrigator track



K. P. Kauffman Company, Inc.

Well location map; visible improvements in 400'

Matsushima-Wetco Farms pad #8-10

SENE section 10-T4N-R66W

Weld Co., Colorado