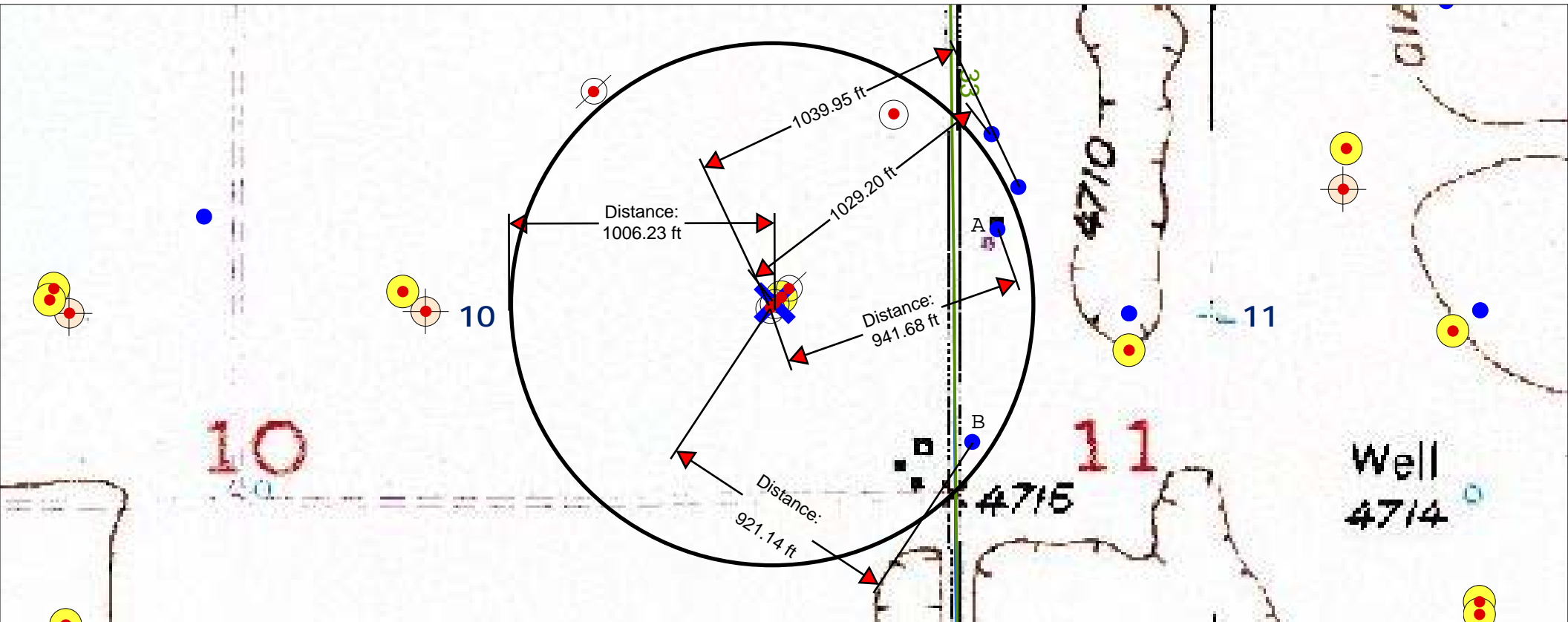


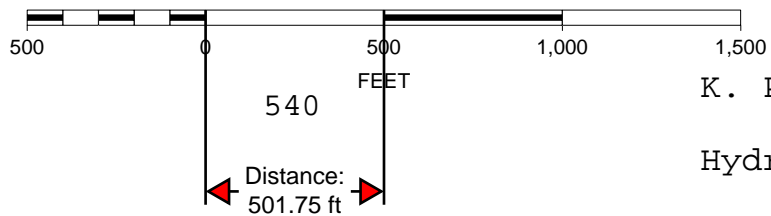
Water Wells within 1000' radius of location; A. Well bearing 941.68' ENE;

B. Well bearing 921.14' ESE

There are no surface waters within 1000' of this location



SCALE 1 : 6,462



K. P. Kauffman Company, Inc.

Hydrology map; indicating surface waters and water wells

Matsushima-Wetco Farms pad #8-10

SENE section 10-T4N-R66W

Weld Co., Colorado