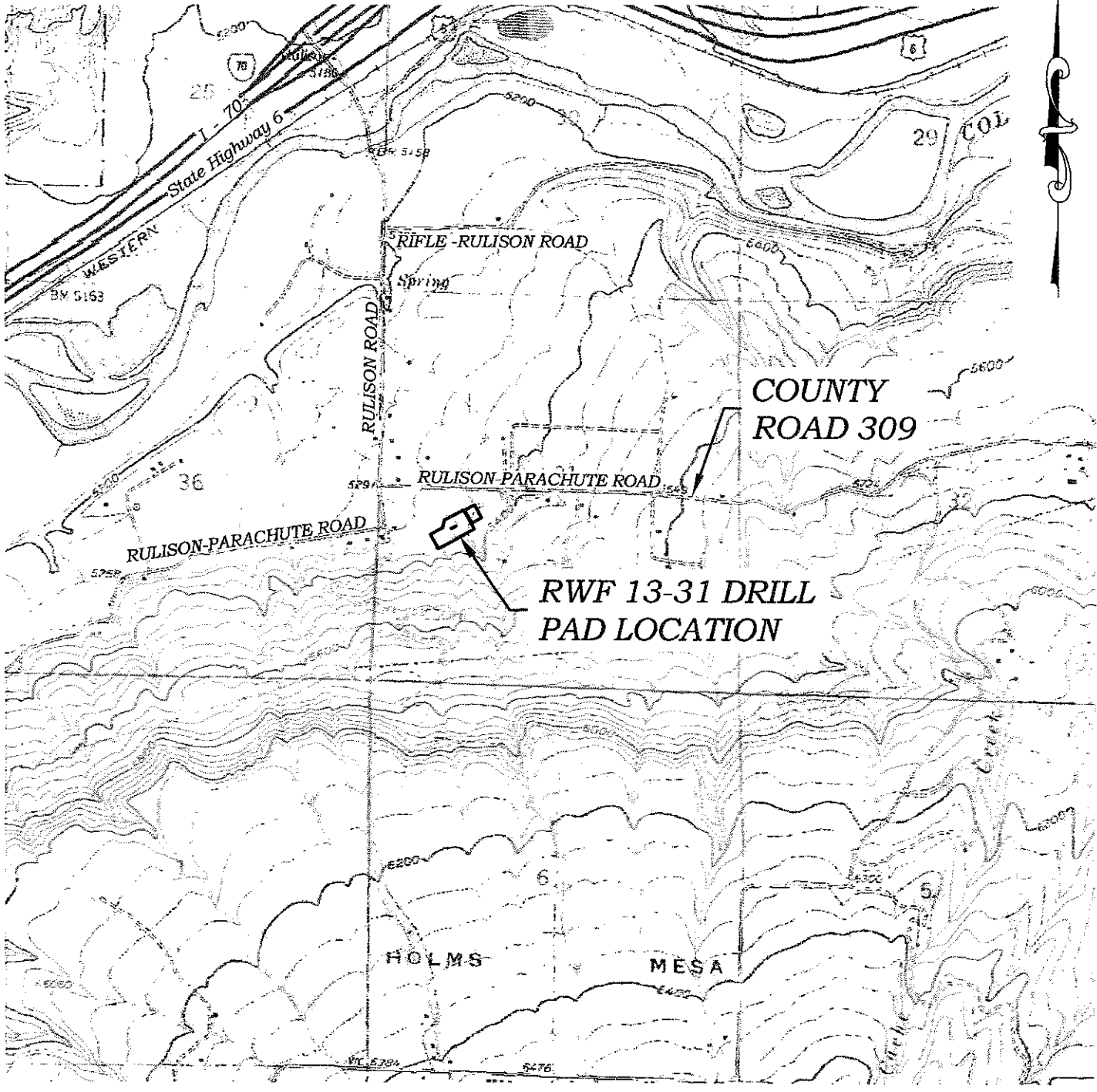


TOWN 111N

Section 31  
T. 6 S., R 94 W



**RWF 13-31 DRILL  
PAD LOCATION**



**ACCESS DESCRIPTION:**  
 FROM THE INTERSECTION OF STATE HIGHWAY 6 AND COUNTY ROAD 323 (RULISON ROAD) NORTH OF RULISON, PROCEED SOUTHERLY ALONG COUNTY ROAD 323 (RULISON ROAD) ±1.1 MILES TO THE INTERSECTION WITH COUNTY ROAD 309 (RULISON PARACHUTE ROAD), PROCEED LEFT IN AN EASTERLY DIRECTION ±0.2 MILES TO THE INTERSECTION WITH A DIRT/GRAVEL ROAD, PROCEED RIGHT IN A SOUTHERLY DIRECTION ±0.1 MILES TO THE RWF 13-31 DRILL PAD LOCATION, AS SHOWN HEREON.

REVISED: 3/23/10

SCALE: 1" = 2000'  
 DATE: 12/5/08  
 PLAT: 5 of 7  
 PROJECT: Williams  
 DFT: cws

**Construction Plan Prepared for:**  
 Williams Williams Production, RMT

RWF 13-31 Drill Pad - Plat 5  
 ACCESS ROAD MAP # TD 40 MA

