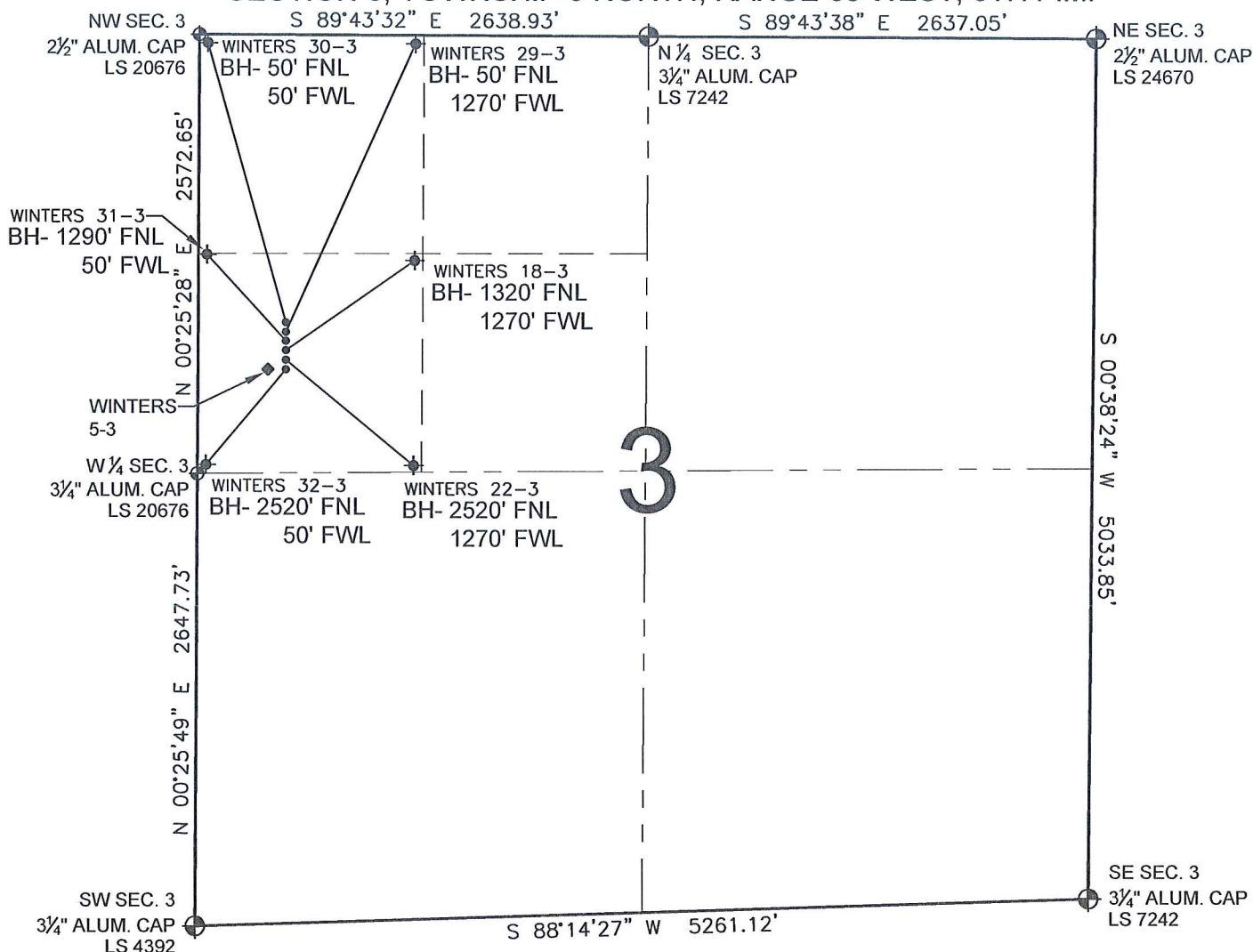


PAD DRAWING - WINTERS 6 PAD

SECTION 3, TOWNSHIP 5 NORTH, RANGE 65 WEST, 6TH P.M.



LEGEND

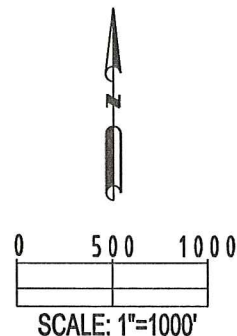
- = EXISTING MONUMENT
 = BOTTOM HOLE
 BH= BOTTOM HOLE
 = PROPOSED WELL
 = EXISTING WELL

NOTES:

- THIS SURVEY WAS DONE BY GPS METHODS AND CONFORMS TO THE MINIMUM STANDARDS SET BY THE C.O.G.C.C., RULE NO. 215
- ELEVATIONS SHOWN AT THE WELL HEAD, AS WELL AS HORIZONTAL CONTROL, ARE BASED ON GPS-RTK VALUES DERIVED FROM DOING 2-HOUR STATIC GPS SESSIONS AND REDUCTIONS USING O.P.U.S. SOLUTIONS.
VERTICAL = NAVD88; HORIZONTAL = NAD83/92
- THE BEARINGS SHOWN HEREON ARE BASED ON GPS OBSERVATIONS BETWEEN THE MONUMENTS SHOWN HEREON AS FOUND ON THE FIELD DATE BELOW.
- DISTANCES SHOWN ARE AT GROUND LEVEL, AS MEASURED IN THE FIELD, WITH TIES TO WELLS MEASURED AT A PERPENDICULAR TO SECTION LINES.

NOTES:

- WINTERS 32-3 TO BE AT 1959' FNL, 517' FWL.
 BOTTOM HOLE AT 2520' FNL & 50' FWL.
 WINTERS 22-3 TO BE AT 1943' FNL, 517' FWL.
 BOTTOM HOLE AT 2520' FNL & 1270' FWL.
 WINTERS 18-3 TO BE AT 1927' FNL, 517' FWL.
 BOTTOM HOLE AT 1320' FNL & 1270' FWL.
 WINTERS 31-3 TO BE AT 1911' FNL, 517' FWL.
 BOTTOM HOLE AT 1290' FNL & 50' FWL.
 WINTERS 29-3 TO BE AT 1895' FNL, 517' FWL.
 BOTTOM HOLE AT 50' FNL & 1270' FWL.
 WINTERS 30-3 TO BE AT 1879' FNL, 517' FWL.
 BOTTOM HOLE AT 50' FNL & 50' FWL.
 WINTERS 5-3 IS 1959' FNL, 470' FWL.



REVISIONS

INITIAL	DATE
SMF	03-01-10

PREPARED BY:



KERR-MCGEE OIL & GAS ONSHORE LP

FIELD DATE:
02-16-10

DRAWING DATE:
02-17-10

BY:
SMF

PAD NAME:
WINTERS 6 PAD

SURFACE LOCATION:

WELD COUNTY, COLORADO
SW 1/4 NW 1/4, SEC. 3, T5N, R65W