

ENSIGN

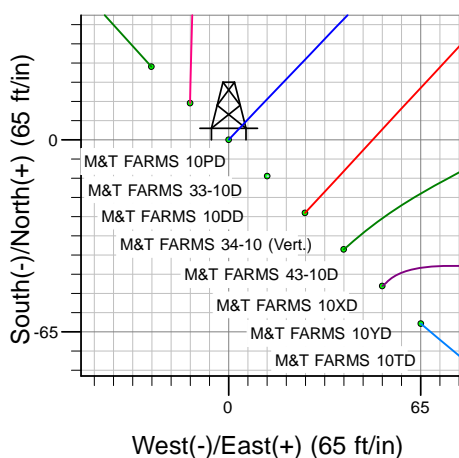
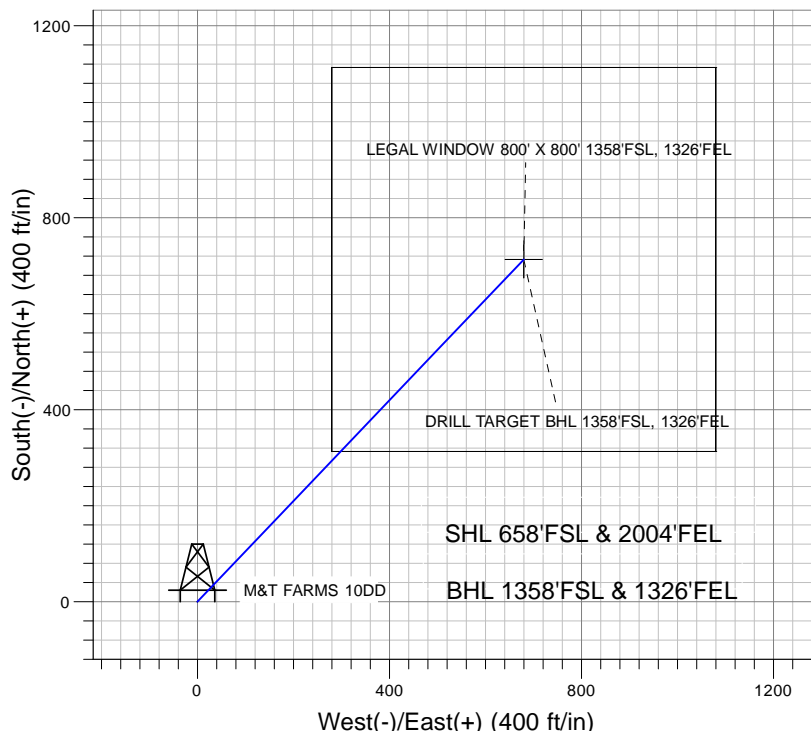
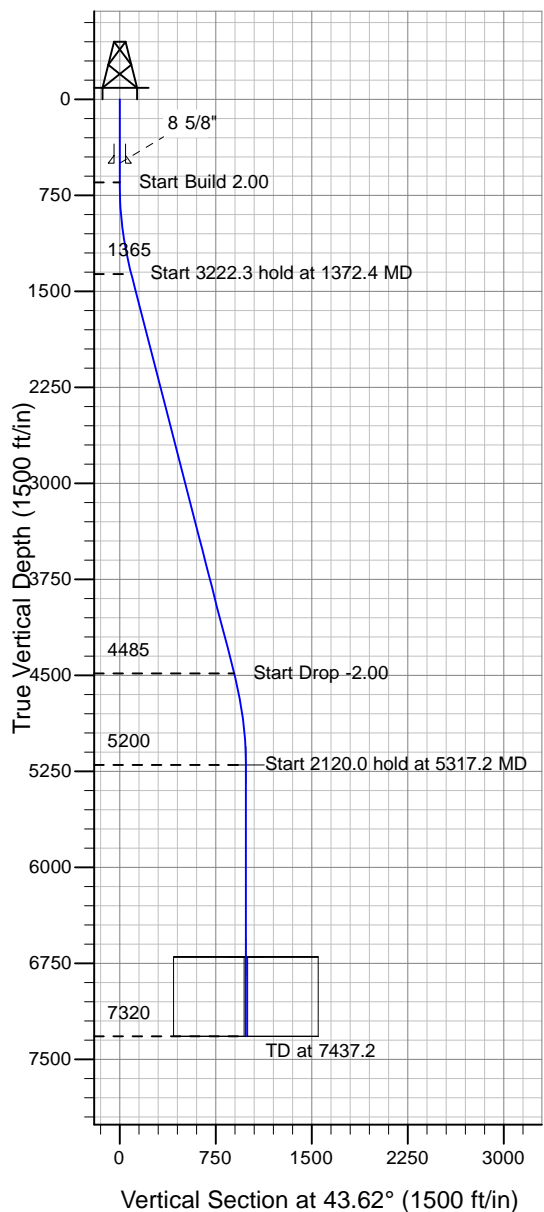
Directional

Well Name: M&T FARMS 10DD

Surface Location: M&T PAD Sec.10-T6N-R65W
 North American Datum 1983 , US State Plane 1983 , Colorado Northern Zone
 Ground Elevation: 4747.0

+N/-S+E/-W Northing Easting Latitude Longitude Slot
 0.0 0.0 1424451.03 3237161.87 40° 29' 43.400 N 104° 38' 50.100 W
 Original Well Elev 10DD @ 4760.0ft (Original Well Elev)

Synergy Resources



M&T PAD Sec.10-T6N-R65W
 M&T FARMS 10DD
 Plan #1 (2-23-10)
 10:18, March 03 2010



Azimuths to True North
 Magnetic North: 8.97°
 Magnetic Field
 Strength: 53367.2snT
 Dip Angle: 67.21°
 Date: 12/31/2009
 Model: IGRF200510

WELLBORE TARGET DETAILS (LAT/LONG)

Name	TVD	+N/-S	+E/-W	Latitude	Longitude	Shape
DRILL TARGET BHL 1358'FSL, 1326'FEL	5200.0	713.2	679.7	40° 29' 50.447 N	104° 38' 41.302 W	Point
LEGAL WINDOW 800' X 800' 1358'FSL, 1326'FEL	6700.0	713.2	679.7	40° 29' 50.447 N	104° 38' 41.302 W	Rectangle (Sides: L800.0 W800.0)

SECTION DETAILS

Sec	MD	Inc	Azi	TVD	+N/-S	+E/-W	DLeg	TFace	VSec	Target
1	0.0	0.00	0.00	0.0	0.0	0.0	0.00	0.00	0.0	
2	650.0	0.00	0.00	650.0	0.0	0.0	0.00	0.00	0.0	
3	1372.4	14.45	43.62	1364.8	65.6	62.5	2.00	43.62	90.6	
4	4594.8	14.45	43.62	4485.2	647.6	617.2	0.00	0.00	894.6	
5	5317.2	0.00	0.00	5200.0	713.2	679.7	2.00	180.00	985.2	DRILL TARGET BHL 1358'FSL, 1326'FEL
6	7437.2	0.00	0.00	7320.0	713.2	679.7	0.00	0.00	985.2	



Synergy Resources

SEC.10-T6N-65W

M&T PAD Sec.10-T6N-R65W

M&T FARMS 10DD

Wellbore #1

Plan: Plan #1 (2-23-10)

Standard Planning Report

03 March, 2010

Database:	EDM den0-adp01 Server Data	Local Co-ordinate Reference:	Well M&T FARMS 10DD
Company:	Synergy Resources	TVD Reference:	10DD @ 4760.0ft (Original Well Elev)
Project:	SEC.10-T6N-65W	MD Reference:	10DD @ 4760.0ft (Original Well Elev)
Site:	M&T PAD Sec.10-T6N-R65W	North Reference:	True
Well:	M&T FARMS 10DD	Survey Calculation Method:	Minimum Curvature
Wellbore:	Wellbore #1		
Design:	Plan #1 (2-23-10)		

Project	SEC.10-T6N-65W, Weld County, Colorado		
Map System:	US State Plane 1983	System Datum:	Mean Sea Level
Geo Datum:	North American Datum 1983		
Map Zone:	Colorado Northern Zone		Using geodetic scale factor

Site	M&T PAD Sec.10-T6N-R65W		
Site Position:		Northing:	1,426,500.00ft
From:	Lat/Long	Easting:	3,236,500.00ft
Position Uncertainty:	0.0 ft	Slot Radius:	"
		Latitude:	40° 30' 3.710 N
		Longitude:	104° 38' 58.413 W
		Grid Convergence:	0.55 °

Well	M&T FARMS 10DD, SHL LAT: 40.495389, LONG: -104.647250		
Well Position	+N/-S	-2,055.3 ft	Northing: 1,424,451.03 ft
	+E/-W	642.2 ft	Easting: 3,237,161.87 ft
Position Uncertainty		0.0 ft	Wellhead Elevation: 4,760.0 ft
			Ground Level: 4,747.0 ft

Wellbore	Wellbore #1				
Magnetics	Model Name	Sample Date	Declination (°)	Dip Angle (°)	Field Strength (nT)
	IGRF200510	12/31/2009	8.97	67.21	53,367

Design	Plan #1 (2-23-10)			
Audit Notes:				
Version:	Phase:	PROTOTYPE	Tie On Depth:	0.0
Vertical Section:	Depth From (TVD) (ft)	+N/-S (ft)	+E/-W (ft)	Direction (°)
	0.0	0.0	0.0	43.62

Plan Sections										
Measured Depth (ft)	Inclination (°)	Azimuth (°)	Vertical Depth (ft)	+N/-S (ft)	+E/-W (ft)	Dogleg Rate (°/100ft)	Build Rate (°/100ft)	Turn Rate (°/100ft)	TFO (°)	Target
0.0	0.00	0.00	0.0	0.0	0.0	0.00	0.00	0.00	0.00	
650.0	0.00	0.00	650.0	0.0	0.0	0.00	0.00	0.00	0.00	
1,372.4	14.45	43.62	1,364.8	65.6	62.5	2.00	2.00	0.00	43.62	
4,594.8	14.45	43.62	4,485.2	647.6	617.2	0.00	0.00	0.00	0.00	
5,317.2	0.00	0.00	5,200.0	713.2	679.7	2.00	-2.00	0.00	180.00	DRILL TARGET BH-
7,437.2	0.00	0.00	7,320.0	713.2	679.7	0.00	0.00	0.00	0.00	

Database:	EDM den0-adp01 Server Data	Local Co-ordinate Reference:	Well M&T FARMS 10DD
Company:	Synergy Resources	TVD Reference:	10DD @ 4760.0ft (Original Well Elev)
Project:	SEC.10-T6N-65W	MD Reference:	10DD @ 4760.0ft (Original Well Elev)
Site:	M&T PAD Sec.10-T6N-R65W	North Reference:	True
Well:	M&T FARMS 10DD	Survey Calculation Method:	Minimum Curvature
Wellbore:	Wellbore #1		
Design:	Plan #1 (2-23-10)		

Planned Survey									
Measured Depth (ft)	Inclination (°)	Azimuth (°)	Vertical Depth (ft)	+N/-S (ft)	+E/-W (ft)	Vertical Section (ft)	Dogleg Rate (°/100ft)	Build Rate (°/100ft)	Turn Rate (°/100ft)
0.0	0.00	0.00	0.0	0.0	0.0	0.0	0.00	0.00	0.00
40.0	0.00	0.00	40.0	0.0	0.0	0.0	0.00	0.00	0.00
80.0	0.00	0.00	80.0	0.0	0.0	0.0	0.00	0.00	0.00
120.0	0.00	0.00	120.0	0.0	0.0	0.0	0.00	0.00	0.00
160.0	0.00	0.00	160.0	0.0	0.0	0.0	0.00	0.00	0.00
200.0	0.00	0.00	200.0	0.0	0.0	0.0	0.00	0.00	0.00
240.0	0.00	0.00	240.0	0.0	0.0	0.0	0.00	0.00	0.00
280.0	0.00	0.00	280.0	0.0	0.0	0.0	0.00	0.00	0.00
320.0	0.00	0.00	320.0	0.0	0.0	0.0	0.00	0.00	0.00
360.0	0.00	0.00	360.0	0.0	0.0	0.0	0.00	0.00	0.00
400.0	0.00	0.00	400.0	0.0	0.0	0.0	0.00	0.00	0.00
440.0	0.00	0.00	440.0	0.0	0.0	0.0	0.00	0.00	0.00
480.0	0.00	0.00	480.0	0.0	0.0	0.0	0.00	0.00	0.00
500.0	0.00	0.00	500.0	0.0	0.0	0.0	0.00	0.00	0.00
8 5/8"									
520.0	0.00	0.00	520.0	0.0	0.0	0.0	0.00	0.00	0.00
560.0	0.00	0.00	560.0	0.0	0.0	0.0	0.00	0.00	0.00
600.0	0.00	0.00	600.0	0.0	0.0	0.0	0.00	0.00	0.00
640.0	0.00	0.00	640.0	0.0	0.0	0.0	0.00	0.00	0.00
650.0	0.00	0.00	650.0	0.0	0.0	0.0	0.00	0.00	0.00
680.0	0.60	43.62	680.0	0.1	0.1	0.2	2.00	2.00	0.00
720.0	1.40	43.62	720.0	0.6	0.6	0.9	2.00	2.00	0.00
760.0	2.20	43.62	760.0	1.5	1.5	2.1	2.00	2.00	0.00
800.0	3.00	43.62	799.9	2.8	2.7	3.9	2.00	2.00	0.00
840.0	3.80	43.62	839.9	4.6	4.3	6.3	2.00	2.00	0.00
880.0	4.60	43.62	879.8	6.7	6.4	9.2	2.00	2.00	0.00
920.0	5.40	43.62	919.6	9.2	8.8	12.7	2.00	2.00	0.00
960.0	6.20	43.62	959.4	12.1	11.6	16.8	2.00	2.00	0.00
1,000.0	7.00	43.62	999.1	15.5	14.7	21.4	2.00	2.00	0.00
1,040.0	7.80	43.62	1,038.8	19.2	18.3	26.5	2.00	2.00	0.00
1,080.0	8.60	43.62	1,078.4	23.3	22.2	32.2	2.00	2.00	0.00
1,120.0	9.40	43.62	1,117.9	27.8	26.5	38.5	2.00	2.00	0.00
1,160.0	10.20	43.62	1,157.3	32.8	31.2	45.3	2.00	2.00	0.00
1,200.0	11.00	43.62	1,196.6	38.1	36.3	52.6	2.00	2.00	0.00
1,240.0	11.80	43.62	1,235.8	43.8	41.8	60.5	2.00	2.00	0.00
1,280.0	12.60	43.62	1,274.9	49.9	47.6	69.0	2.00	2.00	0.00
1,320.0	13.40	43.62	1,313.9	56.5	53.8	78.0	2.00	2.00	0.00
1,360.0	14.20	43.62	1,352.8	63.4	60.4	87.5	2.00	2.00	0.00
1,372.4	14.45	43.62	1,364.8	65.6	62.5	90.6	2.00	2.00	0.00
1,400.0	14.45	43.62	1,391.5	70.6	67.3	97.5	0.00	0.00	0.00
1,440.0	14.45	43.62	1,430.2	77.8	74.1	107.5	0.00	0.00	0.00
1,480.0	14.45	43.62	1,469.0	85.0	81.0	117.4	0.00	0.00	0.00
1,520.0	14.45	43.62	1,507.7	92.2	87.9	127.4	0.00	0.00	0.00
1,560.0	14.45	43.62	1,546.4	99.5	94.8	137.4	0.00	0.00	0.00
1,600.0	14.45	43.62	1,585.2	106.7	101.7	147.4	0.00	0.00	0.00
1,640.0	14.45	43.62	1,623.9	113.9	108.6	157.4	0.00	0.00	0.00
1,680.0	14.45	43.62	1,662.6	121.1	115.5	167.3	0.00	0.00	0.00
1,720.0	14.45	43.62	1,701.4	128.4	122.3	177.3	0.00	0.00	0.00
1,760.0	14.45	43.62	1,740.1	135.6	129.2	187.3	0.00	0.00	0.00
1,800.0	14.45	43.62	1,778.8	142.8	136.1	197.3	0.00	0.00	0.00
1,840.0	14.45	43.62	1,817.6	150.0	143.0	207.3	0.00	0.00	0.00
1,880.0	14.45	43.62	1,856.3	157.3	149.9	217.3	0.00	0.00	0.00
1,920.0	14.45	43.62	1,895.0	164.5	156.8	227.2	0.00	0.00	0.00
1,960.0	14.45	43.62	1,933.8	171.7	163.7	237.2	0.00	0.00	0.00

Database:	EDM den0-adp01 Server Data	Local Co-ordinate Reference:	Well M&T FARMS 10DD
Company:	Synergy Resources	TVD Reference:	10DD @ 4760.0ft (Original Well Elev)
Project:	SEC.10-T6N-65W	MD Reference:	10DD @ 4760.0ft (Original Well Elev)
Site:	M&T PAD Sec.10-T6N-R65W	North Reference:	True
Well:	M&T FARMS 10DD	Survey Calculation Method:	Minimum Curvature
Wellbore:	Wellbore #1		
Design:	Plan #1 (2-23-10)		

Planned Survey									
Measured Depth (ft)	Inclination (°)	Azimuth (°)	Vertical Depth (ft)	+N/-S (ft)	+E/-W (ft)	Vertical Section (ft)	Dogleg Rate (°/100ft)	Build Rate (°/100ft)	Turn Rate (°/100ft)
2,000.0	14.45	43.62	1,972.5	178.9	170.5	247.2	0.00	0.00	0.00
2,040.0	14.45	43.62	2,011.3	186.2	177.4	257.2	0.00	0.00	0.00
2,080.0	14.45	43.62	2,050.0	193.4	184.3	267.2	0.00	0.00	0.00
2,120.0	14.45	43.62	2,088.7	200.6	191.2	277.1	0.00	0.00	0.00
2,160.0	14.45	43.62	2,127.5	207.8	198.1	287.1	0.00	0.00	0.00
2,200.0	14.45	43.62	2,166.2	215.1	205.0	297.1	0.00	0.00	0.00
2,240.0	14.45	43.62	2,204.9	222.3	211.9	307.1	0.00	0.00	0.00
2,280.0	14.45	43.62	2,243.7	229.5	218.7	317.1	0.00	0.00	0.00
2,320.0	14.45	43.62	2,282.4	236.7	225.6	327.0	0.00	0.00	0.00
2,360.0	14.45	43.62	2,321.1	244.0	232.5	337.0	0.00	0.00	0.00
2,400.0	14.45	43.62	2,359.9	251.2	239.4	347.0	0.00	0.00	0.00
2,440.0	14.45	43.62	2,398.6	258.4	246.3	357.0	0.00	0.00	0.00
2,480.0	14.45	43.62	2,437.3	265.6	253.2	367.0	0.00	0.00	0.00
2,520.0	14.45	43.62	2,476.1	272.9	260.1	376.9	0.00	0.00	0.00
2,560.0	14.45	43.62	2,514.8	280.1	266.9	386.9	0.00	0.00	0.00
2,600.0	14.45	43.62	2,553.5	287.3	273.8	396.9	0.00	0.00	0.00
2,640.0	14.45	43.62	2,592.3	294.5	280.7	406.9	0.00	0.00	0.00
2,680.0	14.45	43.62	2,631.0	301.8	287.6	416.9	0.00	0.00	0.00
2,720.0	14.45	43.62	2,669.7	309.0	294.5	426.8	0.00	0.00	0.00
2,760.0	14.45	43.62	2,708.5	316.2	301.4	436.8	0.00	0.00	0.00
2,800.0	14.45	43.62	2,747.2	323.4	308.3	446.8	0.00	0.00	0.00
2,840.0	14.45	43.62	2,786.0	330.6	315.1	456.8	0.00	0.00	0.00
2,880.0	14.45	43.62	2,824.7	337.9	322.0	466.8	0.00	0.00	0.00
2,920.0	14.45	43.62	2,863.4	345.1	328.9	476.7	0.00	0.00	0.00
2,960.0	14.45	43.62	2,902.2	352.3	335.8	486.7	0.00	0.00	0.00
3,000.0	14.45	43.62	2,940.9	359.5	342.7	496.7	0.00	0.00	0.00
3,040.0	14.45	43.62	2,979.6	366.8	349.6	506.7	0.00	0.00	0.00
3,080.0	14.45	43.62	3,018.4	374.0	356.5	516.7	0.00	0.00	0.00
3,120.0	14.45	43.62	3,057.1	381.2	363.3	526.6	0.00	0.00	0.00
3,160.0	14.45	43.62	3,095.8	388.4	370.2	536.6	0.00	0.00	0.00
3,200.0	14.45	43.62	3,134.6	395.7	377.1	546.6	0.00	0.00	0.00
3,240.0	14.45	43.62	3,173.3	402.9	384.0	556.6	0.00	0.00	0.00
3,280.0	14.45	43.62	3,212.0	410.1	390.9	566.6	0.00	0.00	0.00
3,320.0	14.45	43.62	3,250.8	417.3	397.8	576.5	0.00	0.00	0.00
3,360.0	14.45	43.62	3,289.5	424.6	404.7	586.5	0.00	0.00	0.00
3,400.0	14.45	43.62	3,328.2	431.8	411.5	596.5	0.00	0.00	0.00
3,440.0	14.45	43.62	3,367.0	439.0	418.4	606.5	0.00	0.00	0.00
3,480.0	14.45	43.62	3,405.7	446.2	425.3	616.5	0.00	0.00	0.00
3,520.0	14.45	43.62	3,444.4	453.5	432.2	626.4	0.00	0.00	0.00
3,560.0	14.45	43.62	3,483.2	460.7	439.1	636.4	0.00	0.00	0.00
3,600.0	14.45	43.62	3,521.9	467.9	446.0	646.4	0.00	0.00	0.00
3,640.0	14.45	43.62	3,560.7	475.1	452.9	656.4	0.00	0.00	0.00
3,680.0	14.45	43.62	3,599.4	482.4	459.7	666.4	0.00	0.00	0.00
3,720.0	14.45	43.62	3,638.1	489.6	466.6	676.3	0.00	0.00	0.00
3,760.0	14.45	43.62	3,676.9	496.8	473.5	686.3	0.00	0.00	0.00
3,800.0	14.45	43.62	3,715.6	504.0	480.4	696.3	0.00	0.00	0.00
3,840.0	14.45	43.62	3,754.3	511.3	487.3	706.3	0.00	0.00	0.00
3,880.0	14.45	43.62	3,793.1	518.5	494.2	716.3	0.00	0.00	0.00
3,920.0	14.45	43.62	3,831.8	525.7	501.1	726.2	0.00	0.00	0.00
3,960.0	14.45	43.62	3,870.5	532.9	507.9	736.2	0.00	0.00	0.00
4,000.0	14.45	43.62	3,909.3	540.2	514.8	746.2	0.00	0.00	0.00
4,040.0	14.45	43.62	3,948.0	547.4	521.7	756.2	0.00	0.00	0.00
4,080.0	14.45	43.62	3,986.7	554.6	528.6	766.2	0.00	0.00	0.00
4,120.0	14.45	43.62	4,025.5	561.8	535.5	776.1	0.00	0.00	0.00

Database:	EDM den0-adp01 Server Data	Local Co-ordinate Reference:	Well M&T FARMS 10DD
Company:	Synergy Resources	TVD Reference:	10DD @ 4760.0ft (Original Well Elev)
Project:	SEC.10-T6N-65W	MD Reference:	10DD @ 4760.0ft (Original Well Elev)
Site:	M&T PAD Sec.10-T6N-R65W	North Reference:	True
Well:	M&T FARMS 10DD	Survey Calculation Method:	Minimum Curvature
Wellbore:	Wellbore #1		
Design:	Plan #1 (2-23-10)		

Planned Survey									
Measured Depth (ft)	Inclination (°)	Azimuth (°)	Vertical Depth (ft)	+N/-S (ft)	+E/-W (ft)	Vertical Section (ft)	Dogleg Rate (°/100ft)	Build Rate (°/100ft)	Turn Rate (°/100ft)
4,160.0	14.45	43.62	4,064.2	569.1	542.4	786.1	0.00	0.00	0.00
4,200.0	14.45	43.62	4,102.9	576.3	549.3	796.1	0.00	0.00	0.00
4,240.0	14.45	43.62	4,141.7	583.5	556.1	806.1	0.00	0.00	0.00
4,280.0	14.45	43.62	4,180.4	590.7	563.0	816.1	0.00	0.00	0.00
4,320.0	14.45	43.62	4,219.1	598.0	569.9	826.1	0.00	0.00	0.00
4,360.0	14.45	43.62	4,257.9	605.2	576.8	836.0	0.00	0.00	0.00
4,400.0	14.45	43.62	4,296.6	612.4	583.7	846.0	0.00	0.00	0.00
4,440.0	14.45	43.62	4,335.3	619.6	590.6	856.0	0.00	0.00	0.00
4,480.0	14.45	43.62	4,374.1	626.9	597.5	866.0	0.00	0.00	0.00
4,520.0	14.45	43.62	4,412.8	634.1	604.4	876.0	0.00	0.00	0.00
4,560.0	14.45	43.62	4,451.6	641.3	611.2	885.9	0.00	0.00	0.00
4,594.8	14.45	43.62	4,485.2	647.6	617.2	894.6	0.00	0.00	0.00
4,600.0	14.34	43.62	4,490.3	648.5	618.1	895.9	2.00	-2.00	0.00
4,640.0	13.54	43.62	4,529.1	655.5	624.8	905.5	2.00	-2.00	0.00
4,680.0	12.74	43.62	4,568.1	662.1	631.0	914.6	2.00	-2.00	0.00
4,720.0	11.94	43.62	4,607.1	668.3	636.9	923.2	2.00	-2.00	0.00
4,760.0	11.14	43.62	4,646.3	674.1	642.5	931.2	2.00	-2.00	0.00
4,800.0	10.34	43.62	4,685.6	679.5	647.6	938.7	2.00	-2.00	0.00
4,840.0	9.54	43.62	4,725.0	684.5	652.4	945.6	2.00	-2.00	0.00
4,880.0	8.74	43.62	4,764.5	689.1	656.8	951.9	2.00	-2.00	0.00
4,920.0	7.94	43.62	4,804.1	693.3	660.8	957.7	2.00	-2.00	0.00
4,960.0	7.14	43.62	4,843.7	697.1	664.4	963.0	2.00	-2.00	0.00
5,000.0	6.34	43.62	4,883.5	700.5	667.6	967.7	2.00	-2.00	0.00
5,040.0	5.54	43.62	4,923.3	703.5	670.5	971.8	2.00	-2.00	0.00
5,080.0	4.74	43.62	4,963.1	706.1	673.0	975.4	2.00	-2.00	0.00
5,120.0	3.94	43.62	5,003.0	708.3	675.1	978.4	2.00	-2.00	0.00
5,160.0	3.14	43.62	5,042.9	710.0	676.8	980.9	2.00	-2.00	0.00
5,200.0	2.34	43.62	5,082.9	711.4	678.1	982.8	2.00	-2.00	0.00
5,240.0	1.54	43.62	5,122.8	712.4	679.0	984.2	2.00	-2.00	0.00
5,280.0	0.74	43.62	5,162.8	713.0	679.6	985.0	2.00	-2.00	0.00
5,317.2	0.00	0.00	5,200.0	713.2	679.7	985.2	2.00	-2.00	0.00
DRILL TARGET BHL 1358'FSL, 1326'FEL									
5,320.0	0.00	0.00	5,202.8	713.2	679.7	985.2	0.00	0.00	0.00
5,360.0	0.00	0.00	5,242.8	713.2	679.7	985.2	0.00	0.00	0.00
5,400.0	0.00	0.00	5,282.8	713.2	679.7	985.2	0.00	0.00	0.00
5,440.0	0.00	0.00	5,322.8	713.2	679.7	985.2	0.00	0.00	0.00
5,480.0	0.00	0.00	5,362.8	713.2	679.7	985.2	0.00	0.00	0.00
5,520.0	0.00	0.00	5,402.8	713.2	679.7	985.2	0.00	0.00	0.00
5,560.0	0.00	0.00	5,442.8	713.2	679.7	985.2	0.00	0.00	0.00
5,600.0	0.00	0.00	5,482.8	713.2	679.7	985.2	0.00	0.00	0.00
5,640.0	0.00	0.00	5,522.8	713.2	679.7	985.2	0.00	0.00	0.00
5,680.0	0.00	0.00	5,562.8	713.2	679.7	985.2	0.00	0.00	0.00
5,720.0	0.00	0.00	5,602.8	713.2	679.7	985.2	0.00	0.00	0.00
5,760.0	0.00	0.00	5,642.8	713.2	679.7	985.2	0.00	0.00	0.00
5,800.0	0.00	0.00	5,682.8	713.2	679.7	985.2	0.00	0.00	0.00
5,840.0	0.00	0.00	5,722.8	713.2	679.7	985.2	0.00	0.00	0.00
5,880.0	0.00	0.00	5,762.8	713.2	679.7	985.2	0.00	0.00	0.00
5,920.0	0.00	0.00	5,802.8	713.2	679.7	985.2	0.00	0.00	0.00
5,960.0	0.00	0.00	5,842.8	713.2	679.7	985.2	0.00	0.00	0.00
6,000.0	0.00	0.00	5,882.8	713.2	679.7	985.2	0.00	0.00	0.00
6,040.0	0.00	0.00	5,922.8	713.2	679.7	985.2	0.00	0.00	0.00
6,080.0	0.00	0.00	5,962.8	713.2	679.7	985.2	0.00	0.00	0.00
6,120.0	0.00	0.00	6,002.8	713.2	679.7	985.2	0.00	0.00	0.00
6,160.0	0.00	0.00	6,042.8	713.2	679.7	985.2	0.00	0.00	0.00

Database:	EDM den0-adp01 Server Data	Local Co-ordinate Reference:	Well M&T FARMS 10DD
Company:	Synergy Resources	TVD Reference:	10DD @ 4760.0ft (Original Well Elev)
Project:	SEC.10-T6N-65W	MD Reference:	10DD @ 4760.0ft (Original Well Elev)
Site:	M&T PAD Sec.10-T6N-R65W	North Reference:	True
Well:	M&T FARMS 10DD	Survey Calculation Method:	Minimum Curvature
Wellbore:	Wellbore #1		
Design:	Plan #1 (2-23-10)		

Planned Survey									
Measured Depth (ft)	Inclination (°)	Azimuth (°)	Vertical Depth (ft)	+N/-S (ft)	+E/-W (ft)	Vertical Section (ft)	Dogleg Rate (°/100ft)	Build Rate (°/100ft)	Turn Rate (°/100ft)
6,200.0	0.00	0.00	6,082.8	713.2	679.7	985.2	0.00	0.00	0.00
6,240.0	0.00	0.00	6,122.8	713.2	679.7	985.2	0.00	0.00	0.00
6,280.0	0.00	0.00	6,162.8	713.2	679.7	985.2	0.00	0.00	0.00
6,320.0	0.00	0.00	6,202.8	713.2	679.7	985.2	0.00	0.00	0.00
6,360.0	0.00	0.00	6,242.8	713.2	679.7	985.2	0.00	0.00	0.00
6,400.0	0.00	0.00	6,282.8	713.2	679.7	985.2	0.00	0.00	0.00
6,440.0	0.00	0.00	6,322.8	713.2	679.7	985.2	0.00	0.00	0.00
6,480.0	0.00	0.00	6,362.8	713.2	679.7	985.2	0.00	0.00	0.00
6,520.0	0.00	0.00	6,402.8	713.2	679.7	985.2	0.00	0.00	0.00
6,560.0	0.00	0.00	6,442.8	713.2	679.7	985.2	0.00	0.00	0.00
6,600.0	0.00	0.00	6,482.8	713.2	679.7	985.2	0.00	0.00	0.00
6,640.0	0.00	0.00	6,522.8	713.2	679.7	985.2	0.00	0.00	0.00
6,680.0	0.00	0.00	6,562.8	713.2	679.7	985.2	0.00	0.00	0.00
6,720.0	0.00	0.00	6,602.8	713.2	679.7	985.2	0.00	0.00	0.00
6,760.0	0.00	0.00	6,642.8	713.2	679.7	985.2	0.00	0.00	0.00
6,800.0	0.00	0.00	6,682.8	713.2	679.7	985.2	0.00	0.00	0.00
6,817.2	0.00	0.00	6,700.0	713.2	679.7	985.2	0.00	0.00	0.00
LEGAL WINDOW 800' X 800' 1358'FSL, 1326'FEL									
6,840.0	0.00	0.00	6,722.8	713.2	679.7	985.2	0.00	0.00	0.00
6,880.0	0.00	0.00	6,762.8	713.2	679.7	985.2	0.00	0.00	0.00
6,920.0	0.00	0.00	6,802.8	713.2	679.7	985.2	0.00	0.00	0.00
6,960.0	0.00	0.00	6,842.8	713.2	679.7	985.2	0.00	0.00	0.00
7,000.0	0.00	0.00	6,882.8	713.2	679.7	985.2	0.00	0.00	0.00
7,040.0	0.00	0.00	6,922.8	713.2	679.7	985.2	0.00	0.00	0.00
7,080.0	0.00	0.00	6,962.8	713.2	679.7	985.2	0.00	0.00	0.00
7,120.0	0.00	0.00	7,002.8	713.2	679.7	985.2	0.00	0.00	0.00
7,160.0	0.00	0.00	7,042.8	713.2	679.7	985.2	0.00	0.00	0.00
7,200.0	0.00	0.00	7,082.8	713.2	679.7	985.2	0.00	0.00	0.00
7,240.0	0.00	0.00	7,122.8	713.2	679.7	985.2	0.00	0.00	0.00
7,280.0	0.00	0.00	7,162.8	713.2	679.7	985.2	0.00	0.00	0.00
7,320.0	0.00	0.00	7,202.8	713.2	679.7	985.2	0.00	0.00	0.00
7,360.0	0.00	0.00	7,242.8	713.2	679.7	985.2	0.00	0.00	0.00
7,400.0	0.00	0.00	7,282.8	713.2	679.7	985.2	0.00	0.00	0.00
7,437.2	0.00	0.00	7,320.0	713.2	679.7	985.2	0.00	0.00	0.00

Targets									
Target Name	Dip Angle (°)	Dip Dir. (°)	TVD (ft)	+N/-S (ft)	+E/-W (ft)	Northing (ft)	Easting (ft)	Latitude	Longitude
LEGAL WINDOW 80C	0.00	0.00	6,700.0	713.2	679.7	1,425,170.67	3,237,834.69	40° 29' 50.447 N	104° 38' 41.302 W
- hit/miss target									
- Shape									
- plan hits target center									
- Rectangle (sides W800.0 H800.0 D620.0)									
DRILL TARGET BHL	0.00	0.00	5,200.0	713.2	679.7	1,425,170.67	3,237,834.69	40° 29' 50.447 N	104° 38' 41.302 W
- plan hits target center									
- Point									

Database:	EDM den0-adp01 Server Data	Local Co-ordinate Reference:	Well M&T FARMS 10DD
Company:	Synergy Resources	TVD Reference:	10DD @ 4760.0ft (Original Well Elev)
Project:	SEC.10-T6N-65W	MD Reference:	10DD @ 4760.0ft (Original Well Elev)
Site:	M&T PAD Sec.10-T6N-R65W	North Reference:	True
Well:	M&T FARMS 10DD	Survey Calculation Method:	Minimum Curvature
Wellbore:	Wellbore #1		
Design:	Plan #1 (2-23-10)		

Casing Points					
Measured Depth (ft)	Vertical Depth (ft)	Name	Casing Diameter (")	Hole Diameter (")	
500.0	500.0	8 5/8"	8-5/8	12-1/4	



Synergy Resources

SEC.10-T6N-65W

M&T PAD Sec.10-T6N-R65W

M&T FARMS 10DD

Wellbore #1

Plan #1 (2-23-10)

Anticollision Report

03 March, 2010

Company:	Synergy Resources	Local Co-ordinate Reference:	Well M&T FARMS 10DD
Project:	SEC.10-T6N-65W	TVD Reference:	10DD @ 4760.0ft (Original Well Elev)
Reference Site:	M&T PAD Sec.10-T6N-R65W	MD Reference:	10DD @ 4760.0ft (Original Well Elev)
Site Error:	0.0ft	North Reference:	True
Reference Well:	M&T FARMS 10DD	Survey Calculation Method:	Minimum Curvature
Well Error:	0.0ft	Output errors are at	2.00 sigma
Reference Wellbore	Wellbore #1	Database:	EDM den0-adp01 Server Data
Reference Design:	Plan #1 (2-23-10)	Offset TVD Reference:	Offset Datum

Reference	Plan #1 (2-23-10)		
Filter type:	NO GLOBAL FILTER: Using user defined selection & filtering criteria		
Interpolation Method:	MD Interval 100.0ft	Error Model:	ISCWSA
Depth Range:	Unlimited	Scan Method:	Closest Approach 3D
Results Limited by:	Maximum center-center distance of 2,000.0ft	Error Surface:	Elliptical Conic
Warning Levels Evaluated at:	2.00 Sigma		

Survey Tool Program		Date	3/3/2010		
From (ft)	To (ft)	Survey (Wellbore)	Tool Name	Description	
0.0	7,437.2	Plan #1 (2-23-10) (Wellbore #1)	MWD	MWD - Standard	

Summary						
Site Name	Reference Measured Depth (ft)	Offset Measured Depth (ft)	Distance Between Centres (ft)	Distance Between Ellipses (ft)	Separation Factor	Warning
Offset Well - Wellbore - Design						
M&T PAD Sec.10-T6N-R65W						
M&T FARMS 33-10D - Wellbore #1 - Plan #1 (2-23-10)	600.0	600.0	18.0	15.6	7.371	CC
M&T FARMS 33-10D - Wellbore #1 - Plan #1 (2-23-10)	800.0	799.9	18.4	15.1	5.532	ES, SF
M&T FARMS 34-10 (Vert.) - Wellbore #1 - Design #1	600.0	599.0	17.9	15.5	7.348	CC
M&T FARMS 34-10 (Vert.) - Wellbore #1 - Design #1	800.0	798.9	18.3	15.0	5.501	ES, SF
M&T FARMS 43-10D - Wellbore #1 - Plan #1 (2-23-10)	261.0	260.0	35.8	34.9	39.115	CC
M&T FARMS 43-10D - Wellbore #1 - Plan #1 (2-23-10)	300.0	299.0	35.8	34.7	32.861	ES
M&T FARMS 43-10D - Wellbore #1 - Plan #1 (2-23-10)	600.0	596.5	44.9	42.4	18.124	SF

M&T PAD Sec.10-T6N-R65W - M&T FARMS 33-10D - Wellbore #1 - Plan #1 (2-23-10)													Offset Site Error: 0.0 ft	
Survey Program: 0-MWD													Offset Well Error: 0.0 ft	
Reference		Offset		Semi Major Axis			Distance							Warning
Measured Depth (ft)	Vertical Depth (ft)	Measured Depth (ft)	Vertical Depth (ft)	Reference (ft)	Offset (ft)	Highside Toolface (°)	Offset Wellbore Centre +N/-S (ft)	+E/-W (ft)	Between Centres (ft)	Between Ellipses (ft)	Minimum Separation (ft)	Separation Factor		
0.0	0.0	0.0	0.0	0.0	0.0	-46.54	12.4	-13.1	18.0					
100.0	100.0	100.0	100.0	0.1	0.1	-46.54	12.4	-13.1	18.0	17.8	0.20	92.094		
200.0	200.0	200.0	200.0	0.3	0.3	-46.54	12.4	-13.1	18.0	17.4	0.65	27.917		
300.0	300.0	300.0	300.0	0.5	0.5	-46.54	12.4	-13.1	18.0	16.9	1.09	16.452		
400.0	400.0	400.0	400.0	0.8	0.8	-46.54	12.4	-13.1	18.0	16.5	1.54	11.663		
500.0	500.0	500.0	500.0	1.0	1.0	-46.54	12.4	-13.1	18.0	16.0	1.99	9.033		
600.0	600.0	600.0	600.0	1.2	1.2	-46.54	12.4	-13.1	18.0	15.6	2.44	7.371	CC	
648.4	648.4	648.4	648.4	1.3	1.3	-90.82	12.4	-13.1	18.0	15.4	2.66	6.772		
700.0	700.0	700.0	700.0	1.4	1.4	-91.55	12.4	-13.1	18.0	15.1	2.89	6.232		
800.0	799.9	799.9	799.9	1.7	1.7	-102.44	12.4	-13.1	18.4	15.1	3.33	5.532	ES, SF	
900.0	899.7	899.7	899.7	1.9	1.9	-121.21	12.4	-13.1	21.1	17.3	3.78	5.575		
1,000.0	999.1	999.1	999.1	2.1	2.1	-139.72	12.4	-13.1	28.0	23.7	4.23	6.615		
1,100.0	1,098.2	1,098.2	1,098.2	2.4	2.3	-152.70	12.4	-13.1	39.6	35.0	4.67	8.485		
1,200.0	1,196.6	1,196.6	1,196.6	2.7	2.6	-160.80	12.4	-13.1	55.7	50.6	5.11	10.893		
1,300.0	1,294.4	1,295.8	1,295.8	3.1	2.8	-164.90	14.0	-13.0	74.8	69.2	5.55	13.476		
1,400.0	1,391.5	1,395.3	1,395.1	3.5	3.0	-166.06	19.0	-12.9	95.4	89.4	6.00	15.906		
1,500.0	1,488.3	1,495.4	1,494.9	3.9	3.2	-165.52	27.6	-12.7	114.9	108.5	6.48	17.739		
1,600.0	1,585.2	1,596.1	1,594.9	4.4	3.5	-163.84	39.7	-12.4	132.7	125.7	6.99	18.968		
1,700.0	1,682.0	1,697.2	1,694.7	4.9	3.7	-161.37	55.4	-12.0	148.7	141.2	7.55	19.692		
1,800.0	1,778.8	1,798.4	1,794.0	5.3	4.0	-158.27	74.6	-11.6	163.4	155.2	8.17	19.995		
1,900.0	1,875.7	1,899.4	1,892.5	5.8	4.4	-154.65	97.3	-11.0	177.0	168.1	8.87	19.955		

Company:	Synergy Resources	Local Co-ordinate Reference:	Well M&T FARMS 10DD
Project:	SEC.10-T6N-65W	TVD Reference:	10DD @ 4760.0ft (Original Well Elev)
Reference Site:	M&T PAD Sec.10-T6N-R65W	MD Reference:	10DD @ 4760.0ft (Original Well Elev)
Site Error:	0.0ft	North Reference:	True
Reference Well:	M&T FARMS 10DD	Survey Calculation Method:	Minimum Curvature
Well Error:	0.0ft	Output errors are at	2.00 sigma
Reference Wellbore	Wellbore #1	Database:	EDM den0-adp01 Server Data
Reference Design:	Plan #1 (2-23-10)	Offset TVD Reference:	Offset Datum

M&T PAD Sec.10-T6N-R65W - M&T FARMS 33-10D - Wellbore #1 - Plan #1 (2-23-10)													Offset Site Error:	0.0 ft
Survey Program: 0-MWD													Offset Well Error:	0.0 ft
Reference		Offset		Semi Major Axis			Distance							Warning
Measured Depth (ft)	Vertical Depth (ft)	Measured Depth (ft)	Vertical Depth (ft)	Reference (ft)	Offset (ft)	Highside Toolface (°)	Offset Wellbore Centre +N/-S (ft)	+E/-W (ft)	Between Centres (ft)	Between Ellipses (ft)	Minimum Separation (ft)	Separation Factor		
2,000.0	1,972.5	2,000.1	1,989.7	6.3	4.8	-150.56	123.3	-10.4	190.1	180.4	9.67	19.652		
2,100.0	2,069.4	2,100.1	2,085.3	6.8	5.2	-146.09	152.6	-9.7	203.0	192.4	10.59	19.178		
2,200.0	2,166.2	2,198.3	2,178.5	7.3	5.7	-141.55	183.8	-8.9	216.5	204.9	11.60	18.670		
2,300.0	2,263.0	2,296.0	2,271.0	7.8	6.2	-137.52	215.1	-8.2	231.2	218.6	12.65	18.273		
2,400.0	2,359.9	2,393.6	2,363.5	8.3	6.7	-133.98	246.3	-7.4	246.9	233.2	13.74	17.977		
2,500.0	2,456.7	2,491.3	2,456.0	8.8	7.2	-130.87	277.6	-6.7	263.4	248.6	14.83	17.764		
2,600.0	2,553.5	2,588.9	2,548.5	9.3	7.8	-128.12	308.8	-5.9	280.6	264.7	15.93	17.615		
2,700.0	2,650.4	2,686.6	2,641.1	9.9	8.4	-125.69	340.1	-5.2	298.4	281.4	17.03	17.518		
2,800.0	2,747.2	2,784.2	2,733.6	10.4	8.9	-123.54	371.3	-4.4	316.6	298.5	18.14	17.460		
2,900.0	2,844.1	2,881.9	2,826.1	10.9	9.5	-121.62	402.6	-3.7	335.3	316.0	19.23	17.431		
3,000.0	2,940.9	2,979.6	2,918.6	11.4	10.1	-119.90	433.8	-2.9	354.2	333.9	20.33	17.425		
3,100.0	3,037.7	3,077.2	3,011.1	11.9	10.7	-118.35	465.1	-2.2	373.4	352.0	21.42	17.436		
3,200.0	3,134.6	3,174.9	3,103.6	12.4	11.3	-116.95	496.3	-1.4	392.9	370.4	22.50	17.460		
3,300.0	3,231.4	3,272.5	3,196.2	12.9	11.8	-115.69	527.6	-0.7	412.6	389.0	23.59	17.494		
3,400.0	3,328.2	3,370.2	3,288.7	13.5	12.4	-114.54	558.8	0.1	432.4	407.8	24.66	17.534		
3,500.0	3,425.1	3,467.8	3,381.2	14.0	13.0	-113.49	590.1	0.8	452.5	426.7	25.74	17.579		
3,600.0	3,521.9	3,565.5	3,473.7	14.5	13.6	-112.53	621.3	1.6	472.6	445.8	26.81	17.628		
3,700.0	3,618.8	3,663.1	3,566.2	15.0	14.2	-111.65	652.6	2.3	492.9	465.0	27.88	17.679		
3,800.0	3,715.6	3,760.8	3,658.8	15.5	14.8	-110.84	683.8	3.1	513.2	484.3	28.94	17.732		
3,900.0	3,812.4	3,858.4	3,751.3	16.0	15.5	-110.09	715.0	3.8	533.7	503.7	30.01	17.785		
4,000.0	3,909.3	3,956.1	3,843.8	16.6	16.1	-109.39	746.3	4.6	554.2	523.1	31.07	17.839		
4,100.0	4,006.1	4,053.8	3,936.3	17.1	16.7	-108.75	777.5	5.3	574.8	542.7	32.13	17.893		
4,200.0	4,102.9	4,151.4	4,028.8	17.6	17.3	-108.14	808.8	6.1	595.5	562.3	33.18	17.946		
4,300.0	4,199.8	4,249.1	4,121.3	18.1	17.9	-107.58	840.0	6.8	616.2	582.0	34.24	17.998		
4,400.0	4,296.6	4,346.7	4,213.9	18.6	18.5	-107.06	871.3	7.6	637.0	601.7	35.29	18.050		
4,500.0	4,393.5	4,444.4	4,306.4	19.2	19.1	-106.57	902.5	8.3	657.8	621.5	36.34	18.101		
4,600.0	4,490.3	4,542.0	4,398.9	19.7	19.7	-106.13	933.8	9.1	678.7	641.3	37.39	18.150		
4,700.0	4,587.6	4,639.7	4,491.4	20.1	20.3	-105.94	965.0	9.8	699.1	660.8	38.35	18.228		
4,800.0	4,685.6	4,737.2	4,583.8	20.4	20.9	-105.50	996.2	10.6	718.7	679.4	39.26	18.305		
4,900.0	4,784.3	4,834.5	4,676.0	20.7	21.6	-104.83	1,027.4	11.3	737.5	697.4	40.11	18.388		
5,000.0	4,883.5	4,931.5	4,767.9	21.0	22.2	-103.95	1,058.4	12.1	755.8	714.9	40.89	18.484		
5,100.0	4,983.0	5,028.1	4,859.3	21.2	22.8	-102.88	1,089.3	12.8	773.6	732.0	41.60	18.599		
5,200.0	5,082.9	5,124.0	4,950.3	21.3	23.4	-101.64	1,120.0	13.6	791.3	749.0	42.22	18.740		
5,300.0	5,182.8	5,219.3	5,040.5	21.5	24.0	-100.25	1,150.5	14.3	808.9	766.1	42.76	18.915		
5,400.0	5,282.8	5,314.0	5,130.3	21.6	24.6	-54.87	1,180.8	15.0	826.9	783.7	43.21	19.138		
5,500.0	5,382.8	5,408.8	5,220.0	21.7	25.2	-53.13	1,211.1	15.8	845.8	802.1	43.62	19.388		
5,600.0	5,482.8	5,510.1	5,316.1	21.8	25.8	-51.36	1,243.3	16.5	865.3	821.3	44.00	19.663		
5,700.0	5,582.8	5,628.8	5,429.7	21.9	26.3	-49.56	1,277.6	17.4	883.6	839.3	44.30	19.946		
5,800.0	5,682.8	5,750.4	5,547.5	22.0	26.8	-48.05	1,307.8	18.1	899.8	855.2	44.58	20.184		
5,900.0	5,782.8	5,874.4	5,668.8	22.2	27.2	-46.82	1,333.4	18.7	913.6	868.7	44.86	20.367		
6,000.0	5,882.8	6,000.5	5,793.2	22.3	27.6	-45.86	1,354.1	19.2	924.7	879.6	45.13	20.490		
6,100.0	5,982.8	6,128.2	5,919.9	22.4	27.9	-45.17	1,369.4	19.6	932.9	887.5	45.39	20.552		
6,200.0	6,082.8	6,257.0	6,048.4	22.5	28.2	-44.74	1,379.1	19.8	938.1	892.5	45.66	20.546		
6,300.0	6,182.8	6,386.4	6,177.7	22.7	28.3	-44.57	1,383.0	19.9	940.3	894.3	45.93	20.473		
6,400.0	6,282.8	6,491.5	6,282.8	22.8	28.5	-44.57	1,383.1	19.9	940.3	894.1	46.18	20.362		
6,500.0	6,382.8	6,591.5	6,382.8	22.9	28.6	-44.57	1,383.1	19.9	940.3	893.9	46.43	20.251		
6,600.0	6,482.8	6,691.5	6,482.8	23.1	28.7	-44.57	1,383.1	19.9	940.3	893.6	46.69	20.139		
6,700.0	6,582.8	6,791.5	6,582.8	23.2	28.8	-44.57	1,383.1	19.9	940.3	893.3	46.95	20.028		
6,800.0	6,682.8	6,891.5	6,682.8	23.3	28.9	-44.57	1,383.1	19.9	940.3	893.1	47.21	19.916		
6,900.0	6,782.8	6,991.5	6,782.8	23.5	29.0	-44.57	1,383.1	19.9	940.3	892.8	47.48	19.804		
7,000.0	6,882.8	7,091.5	6,882.8	23.6	29.1	-44.57	1,383.1	19.9	940.3	892.6	47.75	19.693		
7,100.0	6,982.8	7,191.5	6,982.8	23.7	29.2	-44.57	1,383.1	19.9	940.3	892.3	48.02	19.582		

Company:	Synergy Resources	Local Co-ordinate Reference:	Well M&T FARMS 10DD
Project:	SEC.10-T6N-65W	TVD Reference:	10DD @ 4760.0ft (Original Well Elev)
Reference Site:	M&T PAD Sec.10-T6N-R65W	MD Reference:	10DD @ 4760.0ft (Original Well Elev)
Site Error:	0.0ft	North Reference:	True
Reference Well:	M&T FARMS 10DD	Survey Calculation Method:	Minimum Curvature
Well Error:	0.0ft	Output errors are at	2.00 sigma
Reference Wellbore	Wellbore #1	Database:	EDM den0-adp01 Server Data
Reference Design:	Plan #1 (2-23-10)	Offset TVD Reference:	Offset Datum

Offset Design M&T PAD Sec.10-T6N-R65W - M&T FARMS 33-10D - Wellbore #1 - Plan #1 (2-23-10)												Offset Site Error:	0.0 ft
Survey Program: 0-MWD												Offset Well Error:	0.0 ft
Reference	Offset	Semi Major Axis		Distance									
Measured Depth (ft)	Vertical Depth (ft)	Measured Depth (ft)	Vertical Depth (ft)	Reference (ft)	Offset (ft)	Highside Toolface (°)	Offset Wellbore Centre +N/-S (ft)	+E/-W (ft)	Between Centres (ft)	Between Ellipses (ft)	Minimum Separation (ft)	Separation Factor	Warning
7,200.0	7,082.8	7,291.5	7,082.8	23.9	29.3	-44.57	1,383.1	19.9	940.3	892.0	48.29	19.471	
7,300.0	7,182.8	7,391.5	7,182.8	24.0	29.4	-44.57	1,383.1	19.9	940.3	891.7	48.57	19.360	
7,400.0	7,282.8	7,491.5	7,282.8	24.2	29.5	-44.57	1,383.1	19.9	940.3	891.5	48.85	19.249	
7,437.2	7,320.0	7,528.7	7,320.0	24.2	29.6	-44.57	1,383.1	19.9	940.3	891.3	48.95	19.208	

Company:	Synergy Resources	Local Co-ordinate Reference:	Well M&T FARMS 10DD
Project:	SEC.10-T6N-65W	TVD Reference:	10DD @ 4760.0ft (Original Well Elev)
Reference Site:	M&T PAD Sec.10-T6N-R65W	MD Reference:	10DD @ 4760.0ft (Original Well Elev)
Site Error:	0.0ft	North Reference:	True
Reference Well:	M&T FARMS 10DD	Survey Calculation Method:	Minimum Curvature
Well Error:	0.0ft	Output errors are at	2.00 sigma
Reference Wellbore	Wellbore #1	Database:	EDM den0-adp01 Server Data
Reference Design:	Plan #1 (2-23-10)	Offset TVD Reference:	Offset Datum

Offset Design M&T PAD Sec.10-T6N-R65W - M&T FARMS 34-10 (Vert.) - Wellbore #1 - Design #1													Offset Site Error:	0.0ft
Survey Program: 0-MWD													Offset Well Error:	0.0ft
Reference		Offset		Semi Major Axis			Distance							Warning
Measured Depth (ft)	Vertical Depth (ft)	Measured Depth (ft)	Vertical Depth (ft)	Reference (ft)	Offset (ft)	Highside Toolface (°)	Offset Wellbore Centre +N/-S (ft)	+E/-W (ft)	Between Centres (ft)	Between Ellipses (ft)	Minimum Separation (ft)	Separation Factor		
0.0	0.0	0.0	0.0	0.0	0.0	133.21	-12.3	13.1	18.0					
100.0	100.0	99.0	99.0	0.1	0.1	133.21	-12.3	13.1	17.9	17.7	0.19	92.185		
200.0	200.0	199.0	199.0	0.3	0.3	133.21	-12.3	13.1	17.9	17.3	0.64	27.902		
300.0	300.0	299.0	299.0	0.5	0.5	133.21	-12.3	13.1	17.9	16.8	1.09	16.420		
400.0	400.0	399.0	399.0	0.8	0.8	133.21	-12.3	13.1	17.9	16.4	1.54	11.633		
500.0	500.0	499.0	499.0	1.0	1.0	133.21	-12.3	13.1	17.9	15.9	1.99	9.007		
600.0	600.0	599.0	599.0	1.2	1.2	133.21	-12.3	13.1	17.9	15.5	2.44	7.348 CC		
655.4	655.4	654.4	654.4	1.3	1.3	90.45	-12.3	13.1	17.9	15.2	2.69	6.670		
700.0	700.0	699.0	699.0	1.4	1.4	90.98	-12.3	13.1	17.9	15.1	2.89	6.210		
800.0	799.9	798.9	798.9	1.7	1.7	101.94	-12.3	13.1	18.3	15.0	3.33	5.501 ES, SF		
900.0	899.7	898.7	898.7	1.9	1.9	120.89	-12.3	13.1	20.9	17.1	3.78	5.528		
1,000.0	999.1	998.1	998.1	2.1	2.1	139.59	-12.3	13.1	27.8	23.5	4.24	6.555		
1,100.0	1,098.2	1,097.2	1,097.2	2.4	2.3	152.67	-12.3	13.1	39.5	34.8	4.69	8.418		
1,200.0	1,196.6	1,195.6	1,195.6	2.7	2.6	160.81	-12.3	13.1	55.5	50.4	5.13	10.820		
1,300.0	1,294.4	1,293.4	1,293.4	3.1	2.8	165.90	-12.3	13.1	75.5	69.9	5.56	13.560		
1,400.0	1,391.5	1,390.5	1,390.5	3.5	3.0	169.23	-12.3	13.1	99.0	93.0	6.01	16.483		
1,500.0	1,488.3	1,487.3	1,487.3	3.9	3.2	171.39	-12.3	13.1	123.6	117.1	6.47	19.112		
1,600.0	1,585.2	1,584.2	1,584.2	4.4	3.4	172.83	-12.3	13.1	148.3	141.4	6.94	21.389		
1,700.0	1,682.0	1,681.0	1,681.0	4.9	3.7	173.86	-12.3	13.1	173.1	165.7	7.41	23.374		
1,800.0	1,778.8	1,777.8	1,777.8	5.3	3.9	174.63	-12.3	13.1	198.0	190.1	7.88	25.115		
1,900.0	1,875.7	1,874.7	1,874.7	5.8	4.1	175.23	-12.3	13.1	222.8	214.5	8.36	26.653		
2,000.0	1,972.5	1,971.5	1,971.5	6.3	4.3	175.71	-12.3	13.1	247.7	238.9	8.84	28.018		
2,100.0	2,069.4	2,068.4	2,068.4	6.8	4.5	176.10	-12.3	13.1	272.6	263.3	9.32	29.238		
2,200.0	2,166.2	2,165.2	2,165.2	7.3	4.7	176.43	-12.3	13.1	297.5	287.7	9.81	30.334		
2,300.0	2,263.0	2,262.0	2,262.0	7.8	5.0	176.71	-12.3	13.1	322.4	312.1	10.29	31.323		
2,400.0	2,359.9	2,358.9	2,358.9	8.3	5.2	176.94	-12.3	13.1	347.3	336.5	10.78	32.220		
2,500.0	2,456.7	2,455.7	2,455.7	8.8	5.4	177.15	-12.3	13.1	372.2	361.0	11.27	33.037		
2,600.0	2,553.5	2,552.5	2,552.5	9.3	5.6	177.33	-12.3	13.1	397.2	385.4	11.76	33.783		
2,700.0	2,650.4	2,649.4	2,649.4	9.9	5.8	177.49	-12.3	13.1	422.1	409.9	12.25	34.468		
2,800.0	2,747.2	2,746.2	2,746.2	10.4	6.0	177.63	-12.3	13.1	447.0	434.3	12.74	35.099		
2,900.0	2,844.1	2,843.1	2,843.1	10.9	6.3	177.75	-12.3	13.1	472.0	458.7	13.23	35.681		
3,000.0	2,940.9	2,939.9	2,939.9	11.4	6.5	177.86	-12.3	13.1	496.9	483.2	13.72	36.220		
3,100.0	3,037.7	3,036.7	3,036.7	11.9	6.7	177.97	-12.3	13.1	521.8	507.6	14.21	36.721		
3,200.0	3,134.6	3,133.6	3,133.6	12.4	6.9	178.06	-12.3	13.1	546.8	532.1	14.70	37.187		
3,300.0	3,231.4	3,230.4	3,230.4	12.9	7.1	178.14	-12.3	13.1	571.7	556.5	15.20	37.622		
3,400.0	3,328.2	3,327.2	3,327.2	13.5	7.4	178.22	-12.3	13.1	596.6	581.0	15.69	38.028		
3,500.0	3,425.1	3,424.1	3,424.1	14.0	7.6	178.29	-12.3	13.1	621.6	605.4	16.18	38.409		
3,600.0	3,521.9	3,520.9	3,520.9	14.5	7.8	178.36	-12.3	13.1	646.5	629.8	16.68	38.767		
3,700.0	3,618.8	3,617.8	3,617.8	15.0	8.0	178.42	-12.3	13.1	671.5	654.3	17.17	39.104		
3,800.0	3,715.6	3,714.6	3,714.6	15.5	8.2	178.48	-12.3	13.1	696.4	678.7	17.67	39.421		
3,900.0	3,812.4	3,811.4	3,811.4	16.0	8.4	178.53	-12.3	13.1	721.4	703.2	18.16	39.720		
4,000.0	3,909.3	3,908.3	3,908.3	16.6	8.7	178.58	-12.3	13.1	746.3	727.6	18.66	40.003		
4,100.0	4,006.1	4,005.1	4,005.1	17.1	8.9	178.62	-12.3	13.1	771.2	752.1	19.15	40.270		
4,200.0	4,102.9	4,101.9	4,101.9	17.6	9.1	178.67	-12.3	13.1	796.2	776.5	19.65	40.524		
4,300.0	4,199.8	4,198.8	4,198.8	18.1	9.3	178.71	-12.3	13.1	821.1	801.0	20.14	40.765		
4,400.0	4,296.6	4,295.6	4,295.6	18.6	9.5	178.75	-12.3	13.1	846.1	825.4	20.64	40.994		
4,500.0	4,393.5	4,392.5	4,392.5	19.2	9.7	178.78	-12.3	13.1	871.0	849.9	21.14	41.211		
4,600.0	4,490.3	4,489.3	4,489.3	19.7	10.0	178.82	-12.3	13.1	896.0	874.3	21.64	41.412		
4,700.0	4,587.6	4,586.6	4,586.6	20.1	10.2	178.86	-12.3	13.1	919.0	896.9	22.16	41.481		
4,800.0	4,685.6	4,684.6	4,684.6	20.4	10.4	178.89	-12.3	13.1	938.7	916.1	22.65	41.452		
4,900.0	4,784.3	4,783.3	4,783.3	20.7	10.6	178.91	-12.3	13.1	954.9	931.8	23.10	41.333		
5,000.0	4,883.5	4,882.5	4,882.5	21.0	10.8	178.93	-12.3	13.1	967.7	944.2	23.53	41.131		

CC - Min centre to center distance or convergent point, SF - min separation factor, ES - min ellipse separation

Company:	Synergy Resources	Local Co-ordinate Reference:	Well M&T FARMS 10DD
Project:	SEC.10-T6N-65W	TVD Reference:	10DD @ 4760.0ft (Original Well Elev)
Reference Site:	M&T PAD Sec.10-T6N-R65W	MD Reference:	10DD @ 4760.0ft (Original Well Elev)
Site Error:	0.0ft	North Reference:	True
Reference Well:	M&T FARMS 10DD	Survey Calculation Method:	Minimum Curvature
Well Error:	0.0ft	Output errors are at	2.00 sigma
Reference Wellbore	Wellbore #1	Database:	EDM den0-adp01 Server Data
Reference Design:	Plan #1 (2-23-10)	Offset TVD Reference:	Offset Datum

Offset Design M&T PAD Sec.10-T6N-R65W - M&T FARMS 34-10 (Vert.) - Wellbore #1 - Design #1													Offset Site Error:	0.0 ft
Survey Program: 0-MWD													Offset Well Error:	0.0 ft
Reference		Offset		Semi Major Axis			Distance							Warning
Measured Depth (ft)	Vertical Depth (ft)	Measured Depth (ft)	Vertical Depth (ft)	Reference (ft)	Offset (ft)	Highside Toolface (°)	Offset Wellbore Centre		Between Centres (ft)	Between Ellipses (ft)	Minimum Separation (ft)	Separation Factor		
							+N/-S (ft)	+E/-W (ft)						
5,100.0	4,983.0	4,982.0	4,982.0	21.2	11.1	178.95	-12.3	13.1	977.0	953.1	23.92	40.850		
5,200.0	5,082.9	5,081.9	5,081.9	21.3	11.3	178.95	-12.3	13.1	982.8	958.6	24.27	40.495		
5,300.0	5,182.8	5,181.8	5,181.8	21.5	11.5	178.96	-12.3	13.1	985.2	960.6	24.59	40.067		
5,400.0	5,282.8	5,281.8	5,281.8	21.6	11.7	-137.42	-12.3	13.1	985.2	960.3	24.97	39.464		
5,500.0	5,382.8	5,381.8	5,381.8	21.7	12.0	-137.42	-12.3	13.1	985.2	959.9	25.38	38.827		
5,600.0	5,482.8	5,481.8	5,481.8	21.8	12.2	-137.42	-12.3	13.1	985.2	959.5	25.79	38.209		
5,700.0	5,582.8	5,581.8	5,581.8	21.9	12.4	-137.42	-12.3	13.1	985.2	959.0	26.20	37.609		
5,800.0	5,682.8	5,681.8	5,681.8	22.0	12.6	-137.42	-12.3	13.1	985.2	958.6	26.61	37.026		
5,900.0	5,782.8	5,781.8	5,781.8	22.2	12.9	-137.42	-12.3	13.1	985.2	958.2	27.02	36.459		
6,000.0	5,882.8	5,881.8	5,881.8	22.3	13.1	-137.42	-12.3	13.1	985.2	957.8	27.44	35.908		
6,100.0	5,982.8	5,981.8	5,981.8	22.4	13.3	-137.42	-12.3	13.1	985.2	957.4	27.85	35.372		
6,200.0	6,082.8	6,081.8	6,081.8	22.5	13.5	-137.42	-12.3	13.1	985.2	957.0	28.27	34.850		
6,300.0	6,182.8	6,181.8	6,181.8	22.7	13.8	-137.42	-12.3	13.1	985.2	956.6	28.69	34.343		
6,400.0	6,282.8	6,281.8	6,281.8	22.8	14.0	-137.42	-12.3	13.1	985.2	956.1	29.11	33.849		
6,500.0	6,382.8	6,381.8	6,381.8	22.9	14.2	-137.42	-12.3	13.1	985.2	955.7	29.53	33.368		
6,600.0	6,482.8	6,481.8	6,481.8	23.1	14.4	-137.42	-12.3	13.1	985.2	955.3	29.95	32.900		
6,700.0	6,582.8	6,581.8	6,581.8	23.2	14.7	-137.42	-12.3	13.1	985.2	954.9	30.37	32.444		
6,800.0	6,682.8	6,681.8	6,681.8	23.3	14.9	-137.42	-12.3	13.1	985.2	954.5	30.79	31.999		
6,900.0	6,782.8	6,781.8	6,781.8	23.5	15.1	-137.42	-12.3	13.1	985.2	954.0	31.21	31.566		
7,000.0	6,882.8	6,881.8	6,881.8	23.6	15.3	-137.42	-12.3	13.1	985.2	953.6	31.64	31.144		
7,100.0	6,982.8	6,981.8	6,981.8	23.7	15.6	-137.42	-12.3	13.1	985.2	953.2	32.06	30.732		
7,200.0	7,082.8	7,081.8	7,081.8	23.9	15.8	-137.42	-12.3	13.1	985.2	952.8	32.48	30.331		
7,300.0	7,182.8	7,181.8	7,181.8	24.0	16.0	-137.42	-12.3	13.1	985.2	952.3	32.91	29.939		
7,400.0	7,282.8	7,281.8	7,281.8	24.2	16.2	-137.42	-12.3	13.1	985.2	951.9	33.33	29.556		
7,437.2	7,320.0	7,319.0	7,319.0	24.2	16.3	-137.42	-12.3	13.1	985.2	951.8	33.49	29.417		

Company:	Synergy Resources	Local Co-ordinate Reference:	Well M&T FARMS 10DD
Project:	SEC.10-T6N-65W	TVD Reference:	10DD @ 4760.0ft (Original Well Elev)
Reference Site:	M&T PAD Sec.10-T6N-R65W	MD Reference:	10DD @ 4760.0ft (Original Well Elev)
Site Error:	0.0ft	North Reference:	True
Reference Well:	M&T FARMS 10DD	Survey Calculation Method:	Minimum Curvature
Well Error:	0.0ft	Output errors are at	2.00 sigma
Reference Wellbore	Wellbore #1	Database:	EDM den0-adp01 Server Data
Reference Design:	Plan #1 (2-23-10)	Offset TVD Reference:	Offset Datum

Offset Design M&T PAD Sec.10-T6N-R65W - M&T FARMS 43-10D - Wellbore #1 - Plan #1 (2-23-10)													Offset Site Error:	0.0ft
Survey Program: 0-MWD													Offset Well Error:	0.0ft
Reference	Offset	Semi Major Axis		Distance										Warning
Measured Depth (ft)	Vertical Depth (ft)	Measured Depth (ft)	Vertical Depth (ft)	Reference (ft)	Offset (ft)	Highside Toolface (°)	Offset Wellbore Centre +N/-S (ft)	+E/-W (ft)	Between Centres (ft)	Between Ellipses (ft)	Minimum Separation (ft)	Separation Factor		
0.0	0.0	0.0	0.0	0.0	0.0	133.77	-24.8	25.9	35.8					
100.0	100.0	99.0	99.0	0.1	0.1	133.77	-24.8	25.9	35.8	35.6	0.19	184.107		
200.0	200.0	199.0	199.0	0.3	0.3	133.77	-24.8	25.9	35.8	35.2	0.64	55.725		
261.0	261.0	260.0	260.0	0.5	0.5	132.77	-24.3	26.3	35.8	34.9	0.92	39.115 CC		
300.0	300.0	299.0	299.0	0.5	0.5	131.04	-23.5	27.0	35.8	34.7	1.09	32.861 ES		
400.0	400.0	398.7	398.6	0.8	0.8	122.85	-19.7	30.5	36.4	34.8	1.55	23.524		
500.0	500.0	498.0	497.4	1.0	1.0	110.24	-13.4	36.4	38.8	36.8	2.01	19.309		
600.0	600.0	596.5	595.3	1.2	1.3	95.99	-4.7	44.5	44.9	42.4	2.48	18.124 SF		
700.0	700.0	694.2	691.8	1.4	1.6	39.88	6.4	54.7	55.3	52.3	2.98	18.537		
800.0	799.9	791.3	787.2	1.7	2.0	31.34	19.9	67.2	67.7	64.2	3.45	19.610		
900.0	899.7	888.0	881.4	1.9	2.4	25.53	35.6	81.7	81.0	77.1	3.93	20.633		
1,000.0	999.1	984.1	974.4	2.1	2.9	21.38	53.5	98.3	94.8	90.4	4.41	21.501		
1,100.0	1,098.2	1,079.8	1,066.0	2.4	3.4	18.29	73.6	116.9	108.8	103.9	4.90	22.193		
1,200.0	1,196.6	1,175.0	1,156.3	2.7	4.0	15.91	95.8	137.5	122.9	117.5	5.41	22.720		
1,300.0	1,294.4	1,269.8	1,245.1	3.1	4.6	14.03	120.1	159.9	137.0	131.1	5.93	23.105		
1,400.0	1,391.5	1,368.4	1,336.8	3.5	5.3	12.55	146.8	184.6	149.8	143.4	6.47	23.152		
1,500.0	1,488.3	1,467.6	1,429.1	3.9	6.0	11.41	173.6	209.4	161.9	154.8	7.06	22.938		
1,600.0	1,585.2	1,566.9	1,521.3	4.4	6.7	10.42	200.4	234.2	174.0	166.4	7.64	22.770		
1,700.0	1,682.0	1,666.1	1,613.6	4.9	7.4	9.56	227.2	259.0	186.2	177.9	8.23	22.620		
1,800.0	1,778.8	1,765.3	1,705.8	5.3	8.1	8.81	254.0	283.8	198.4	189.5	8.82	22.486		
1,900.0	1,875.7	1,864.5	1,798.1	5.8	8.9	8.14	280.8	308.6	210.6	201.2	9.42	22.365		
2,000.0	1,972.5	1,963.8	1,890.4	6.3	9.6	7.55	307.6	333.4	222.8	212.8	10.01	22.256		
2,100.0	2,069.4	2,063.0	1,982.6	6.8	10.3	7.02	334.4	358.2	235.1	224.5	10.61	22.156		
2,200.0	2,166.2	2,162.2	2,074.9	7.3	11.1	6.54	361.2	383.0	247.4	236.2	11.21	22.064		
2,300.0	2,263.0	2,261.4	2,167.1	7.8	11.8	6.11	388.0	407.8	259.7	247.9	11.82	21.979		
2,400.0	2,359.9	2,360.6	2,259.4	8.3	12.5	5.72	414.9	432.5	272.0	259.6	12.42	21.901		
2,500.0	2,456.7	2,459.9	2,351.7	8.8	13.3	5.36	441.7	457.3	284.3	271.3	13.03	21.829		
2,600.0	2,553.5	2,559.1	2,443.9	9.3	14.0	5.03	468.5	482.1	296.7	283.0	13.63	21.761		
2,700.0	2,650.4	2,658.3	2,536.2	9.9	14.7	4.72	495.3	506.9	309.0	294.8	14.24	21.698		
2,800.0	2,747.2	2,757.5	2,628.4	10.4	15.5	4.44	522.1	531.7	321.4	306.5	14.85	21.639		
2,900.0	2,844.1	2,856.8	2,720.7	10.9	16.2	4.18	548.9	556.5	333.7	318.3	15.46	21.583		
3,000.0	2,940.9	2,956.0	2,812.9	11.4	16.9	3.94	575.7	581.3	346.1	330.0	16.07	21.531		
3,100.0	3,037.7	3,055.2	2,905.2	11.9	17.7	3.72	602.5	606.1	358.5	341.8	16.69	21.482		
3,200.0	3,134.6	3,154.4	2,997.5	12.4	18.4	3.51	629.3	630.9	370.9	353.6	17.30	21.436		
3,300.0	3,231.4	3,253.6	3,089.7	12.9	19.1	3.31	656.1	655.7	383.2	365.3	17.92	21.392		
3,400.0	3,328.2	3,352.9	3,182.0	13.5	19.9	3.13	682.9	680.5	395.6	377.1	18.53	21.350		
3,500.0	3,425.1	3,452.1	3,274.2	14.0	20.6	2.96	709.7	705.3	408.0	388.9	19.15	21.311		
3,600.0	3,521.9	3,551.3	3,366.5	14.5	21.3	2.80	736.5	730.1	420.4	400.6	19.76	21.273		
3,700.0	3,618.8	3,650.5	3,458.7	15.0	22.1	2.64	763.3	754.9	432.8	412.4	20.38	21.238		
3,800.0	3,715.6	3,749.8	3,551.0	15.5	22.8	2.50	790.2	779.7	445.2	424.2	21.00	21.204		
3,900.0	3,812.4	3,849.0	3,643.3	16.0	23.6	2.36	817.0	804.5	457.6	436.0	21.61	21.171		
4,000.0	3,909.3	3,948.2	3,735.5	16.6	24.3	2.23	843.8	829.3	470.0	447.8	22.23	21.140		
4,100.0	4,006.1	4,047.4	3,827.8	17.1	25.0	2.11	870.6	854.1	482.4	459.6	22.85	21.111		
4,200.0	4,102.9	4,146.6	3,920.0	17.6	25.8	1.99	897.4	878.9	494.8	471.4	23.47	21.083		
4,300.0	4,199.8	4,245.9	4,012.3	18.1	26.5	1.88	924.2	903.7	507.2	483.1	24.09	21.056		
4,400.0	4,296.6	4,345.1	4,104.6	18.6	27.2	1.78	951.0	928.5	519.6	494.9	24.71	21.030		
4,500.0	4,393.5	4,444.3	4,196.8	19.2	28.0	1.68	977.8	953.3	532.1	506.7	25.33	21.005		
4,600.0	4,490.3	4,543.5	4,289.1	19.7	28.7	1.58	1,004.6	978.1	544.5	518.5	25.95	20.983		
4,700.0	4,587.6	4,642.5	4,381.1	20.1	29.4	1.49	1,031.3	1,002.8	558.8	532.3	26.48	21.106		
4,800.0	4,685.6	4,740.9	4,472.6	20.4	30.2	1.40	1,057.9	1,027.4	576.6	549.6	26.96	21.388		
4,900.0	4,784.3	4,838.6	4,563.4	20.7	30.9	1.31	1,084.3	1,051.8	597.8	570.4	27.39	21.824		
5,000.0	4,883.5	4,935.5	4,653.5	21.0	31.6	1.22	1,110.5	1,076.1	622.4	594.6	27.78	22.408		

CC - Min centre to center distance or convergent point, SF - min separation factor, ES - min ellipse separation

Company:	Synergy Resources	Local Co-ordinate Reference:	Well M&T FARMS 10DD
Project:	SEC.10-T6N-65W	TVD Reference:	10DD @ 4760.0ft (Original Well Elev)
Reference Site:	M&T PAD Sec.10-T6N-R65W	MD Reference:	10DD @ 4760.0ft (Original Well Elev)
Site Error:	0.0ft	North Reference:	True
Reference Well:	M&T FARMS 10DD	Survey Calculation Method:	Minimum Curvature
Well Error:	0.0ft	Output errors are at	2.00 sigma
Reference Wellbore	Wellbore #1	Database:	EDM den0-adp01 Server Data
Reference Design:	Plan #1 (2-23-10)	Offset TVD Reference:	Offset Datum

Offset Design M&T PAD Sec.10-T6N-R65W - M&T FARMS 43-10D - Wellbore #1 - Plan #1 (2-23-10)													Offset Site Error:	0.0 ft
Survey Program: 0-MWD													Offset Well Error:	0.0 ft
Reference		Offset		Semi Major Axis			Distance						Warning	
Measured Depth (ft)	Vertical Depth (ft)	Measured Depth (ft)	Vertical Depth (ft)	Reference (ft)	Offset (ft)	Highside Toolface (°)	Offset Wellbore Centre +N/-S (ft)	+E/-W (ft)	Between Centres (ft)	Between Ellipses (ft)	Minimum Separation (ft)	Separation Factor		
5,100.0	4,983.0	5,031.5	4,742.8	21.2	32.3	1.13	1,136.4	1,100.0	650.3	622.2	28.11	23.138		
5,200.0	5,082.9	5,126.5	4,831.1	21.3	33.0	1.04	1,162.1	1,123.8	681.6	653.3	28.39	24.012		
5,300.0	5,182.8	5,220.3	4,918.3	21.5	33.7	0.96	1,187.4	1,147.2	716.2	687.6	28.61	25.031		
5,400.0	5,282.8	5,313.3	5,004.8	21.6	34.4	44.50	1,212.6	1,170.5	753.0	723.9	29.03	25.933		
5,500.0	5,382.8	5,406.3	5,091.3	21.7	35.1	44.42	1,237.7	1,193.7	789.8	760.2	29.52	26.756		
5,600.0	5,482.8	5,513.2	5,190.9	21.8	35.9	44.33	1,266.3	1,220.2	826.3	796.2	30.03	27.511		
5,700.0	5,582.8	5,647.0	5,317.1	21.9	36.6	44.25	1,298.7	1,250.2	859.3	828.7	30.59	28.095		
5,800.0	5,682.8	5,784.8	5,449.2	22.0	37.2	44.18	1,327.6	1,276.9	887.8	856.7	31.13	28.523		
5,900.0	5,782.8	5,926.4	5,586.7	22.2	37.8	44.13	1,352.4	1,299.8	911.6	880.0	31.65	28.803		
6,000.0	5,882.8	6,071.2	5,728.8	22.3	38.2	44.09	1,372.5	1,318.4	930.6	898.4	32.15	28.943		
6,100.0	5,982.8	6,218.4	5,874.6	22.4	38.6	44.06	1,387.5	1,332.3	944.5	911.8	32.63	28.948		
6,200.0	6,082.8	6,367.3	6,022.9	22.5	38.9	44.04	1,397.1	1,341.1	953.2	920.2	33.07	28.828		
6,300.0	6,182.8	6,517.2	6,172.7	22.7	39.1	44.03	1,401.0	1,344.8	956.8	923.3	33.47	28.584		
6,400.0	6,282.8	6,626.3	6,281.8	22.8	39.2	44.03	1,401.1	1,344.9	956.9	923.1	33.82	28.295		
6,500.0	6,382.8	6,726.3	6,381.8	22.9	39.2	44.03	1,401.1	1,344.9	956.9	922.7	34.16	28.011		
6,600.0	6,482.8	6,826.3	6,481.8	23.1	39.3	44.03	1,401.1	1,344.9	956.9	922.4	34.51	27.730		
6,700.0	6,582.8	6,926.3	6,581.8	23.2	39.4	44.03	1,401.1	1,344.9	956.9	922.0	34.86	27.453		
6,800.0	6,682.8	7,026.3	6,681.8	23.3	39.5	44.03	1,401.1	1,344.9	956.9	921.7	35.21	27.180		
6,900.0	6,782.8	7,126.3	6,781.8	23.5	39.5	44.03	1,401.1	1,344.9	956.9	921.3	35.56	26.910		
7,000.0	6,882.8	7,226.3	6,881.8	23.6	39.6	44.03	1,401.1	1,344.9	956.9	921.0	35.91	26.645		
7,100.0	6,982.8	7,326.3	6,981.8	23.7	39.7	44.03	1,401.1	1,344.9	956.9	920.6	36.27	26.383		
7,200.0	7,082.8	7,426.3	7,081.8	23.9	39.8	44.03	1,401.1	1,344.9	956.9	920.3	36.63	26.125		
7,300.0	7,182.8	7,526.3	7,181.8	24.0	39.9	44.03	1,401.1	1,344.9	956.9	919.9	36.99	25.870		
7,400.0	7,282.8	7,626.3	7,281.8	24.2	40.0	44.03	1,401.1	1,344.9	956.9	919.6	37.35	25.619		
7,437.2	7,320.0	7,663.5	7,319.0	24.2	40.0	44.03	1,401.1	1,344.9	956.9	919.4	37.49	25.527		

Company: Synergy Resources
Project: SEC.10-T6N-65W
Reference Site: M&T PAD Sec.10-T6N-R65W
Site Error: 0.0ft
Reference Well: M&T FARMS 10DD
Well Error: 0.0ft
Reference Wellbore: Wellbore #1
Reference Design: Plan #1 (2-23-10)

Local Co-ordinate Reference: Well M&T FARMS 10DD
TVD Reference: 10DD @ 4760.0ft (Original Well Elev)
MD Reference: 10DD @ 4760.0ft (Original Well Elev)
North Reference: True
Survey Calculation Method: Minimum Curvature
Output errors are at 2.00 sigma
Database: EDM den0-adp01 Server Data
Offset TVD Reference: Offset Datum

Reference Depths are relative to 10DD @ 4760.0ft (Original Well Elev) Coordinates are relative to: M&T FARMS 10DD
Offset Depths are relative to Offset Datum Coordinate System is US State Plane 1983, Colorado Northern Zone
Central Meridian is 105° 30' 0.000 W ° Grid Convergence at Surface is: 0.55°

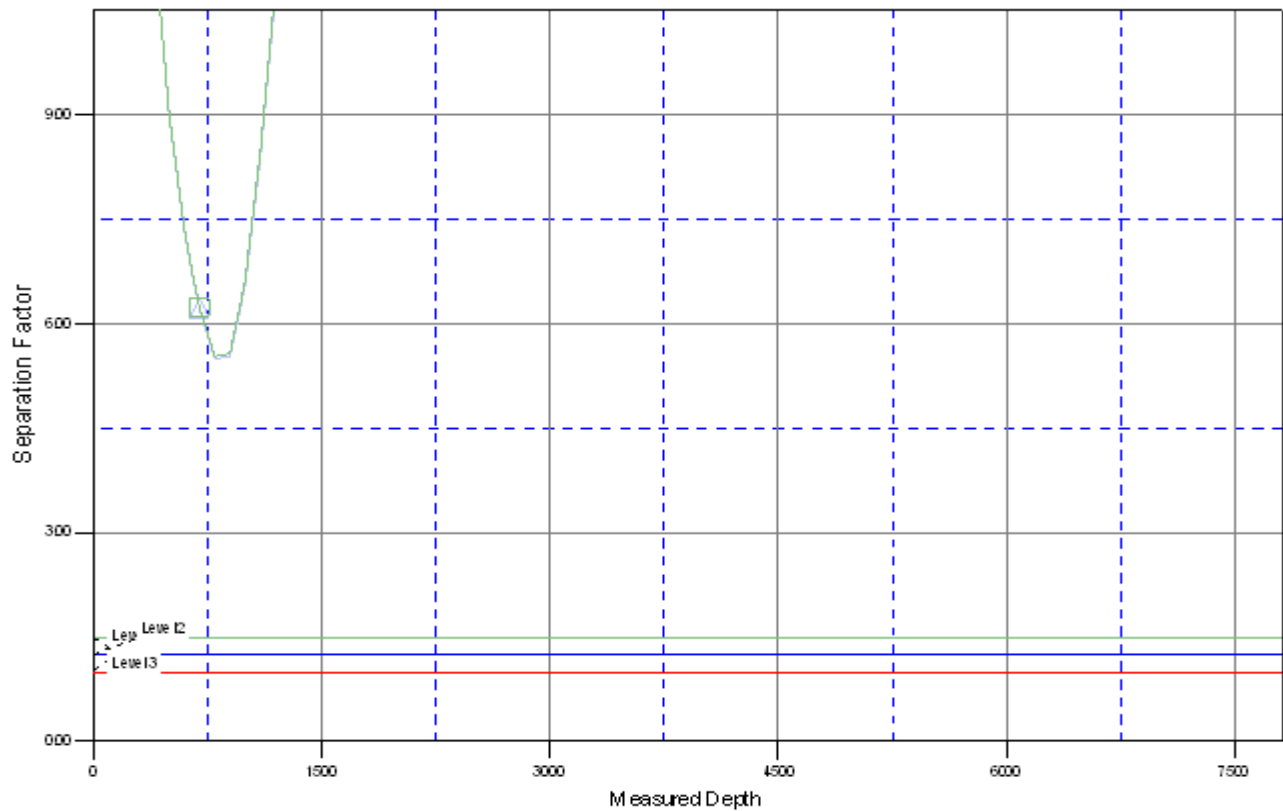


Company: Synergy Resources
Project: SEC.10-T6N-65W
Reference Site: M&T PAD Sec.10-T6N-R65W
Site Error: 0.0ft
Reference Well: M&T FARMS 10DD
Well Error: 0.0ft
Reference Wellbore: Wellbore #1
Reference Design: Plan #1 (2-23-10)

Local Co-ordinate Reference: Well M&T FARMS 10DD
TVD Reference: 10DD @ 4760.0ft (Original Well Elev)
MD Reference: 10DD @ 4760.0ft (Original Well Elev)
North Reference: True
Survey Calculation Method: Minimum Curvature
Output errors are at 2.00 sigma
Database: EDM den0-adp01 Server Data
Offset TVD Reference: Offset Datum

Reference Depths are relative to 10DD @ 4760.0ft (Original Well Elev) Coordinates are relative to: M&T FARMS 10DD
Offset Depths are relative to Offset Datum Coordinate System is US State Plane 1983, Colorado Northern Zone
Central Meridian is 105° 30' 0.000 W ° Grid Convergence at Surface is: 0.55°

Separation Factor Plot



LEGEND

M&T FARMS 33-10 D, Wellbore #1, Plan #1 (2-23-10) \VD — M&T FARMS 34-10 (Vert.), Wellbore #1, Design #1 \VD — M&T FARMS 33-10 D, Wellbore #1, Plan #