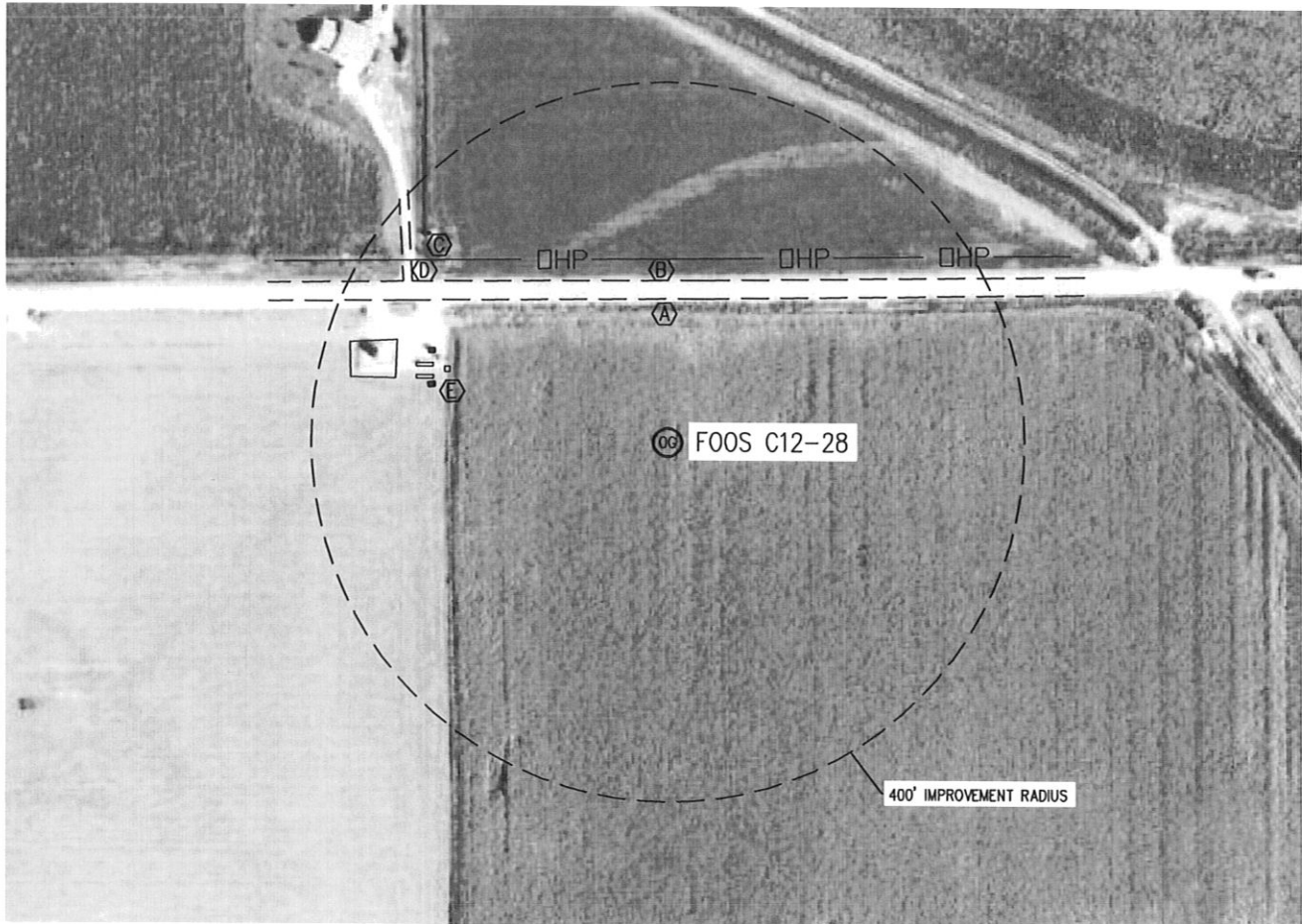


VISIBLE IMPROVEMENTS

SECTION 12
TOWNSHIP 4 NORTH
RANGE 64 WEST



IMPROVEMENTS:

- (A) WELD COUNTY ROAD 48 159' NORTH
- (B) OVERHEAD POWER LINE 203' NORTH
- (C) IRRIGATION PUMP 353' NORTHWEST
- (D) DRIVEWAY 337' NORTHWEST
- (E) OIL & GAS PRODUCTION FACILITY 256' WEST

NOTE

The size, type and location of underground utilities shown hereon are approximate, and are based on markings made by utility locate companies. It is not guaranteed that all utilities have been located. It shall be the responsibility of the contractor to verify the existence of all underground utilities in the area of the work before commencing new construction.

