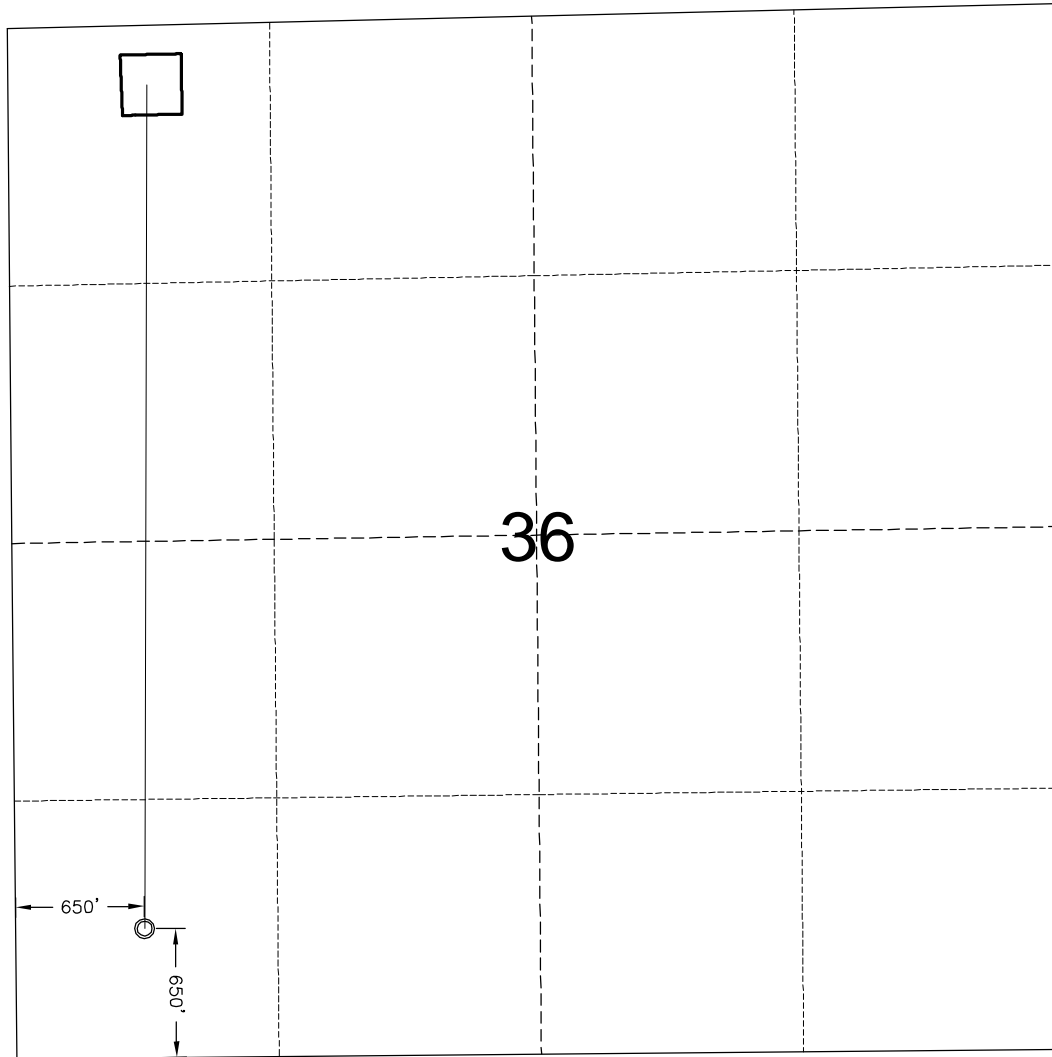
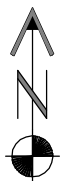


# WELL PLAN



© PROPOSED BOTTOM HOLE LOCATION

3/4/10



North

0 1000 2000

Graphic Scale in Feet  
1 inch = 1000 feet



LAND SURVEYING AND MAPPING  
LAFAYETTE - WINTER PARK  
Ph 303 666 0379 Fx 303 665 6320

**RUBICON OIL & GAS LLC**  
**PAWNEE 10-67-36-1**

**NW1/4 NW1/4 SEC. 36 T10N R67W**  
**6th PM WELD COUNTY COLORADO**