

LOCATION DRAWING

VEGETATION:

CRP-DRY FARM LAND

SURFACE USE:

AGRICULTURAL-FALLOW FIELD

REFERENCE POINT

LATITUDE: 40.796836

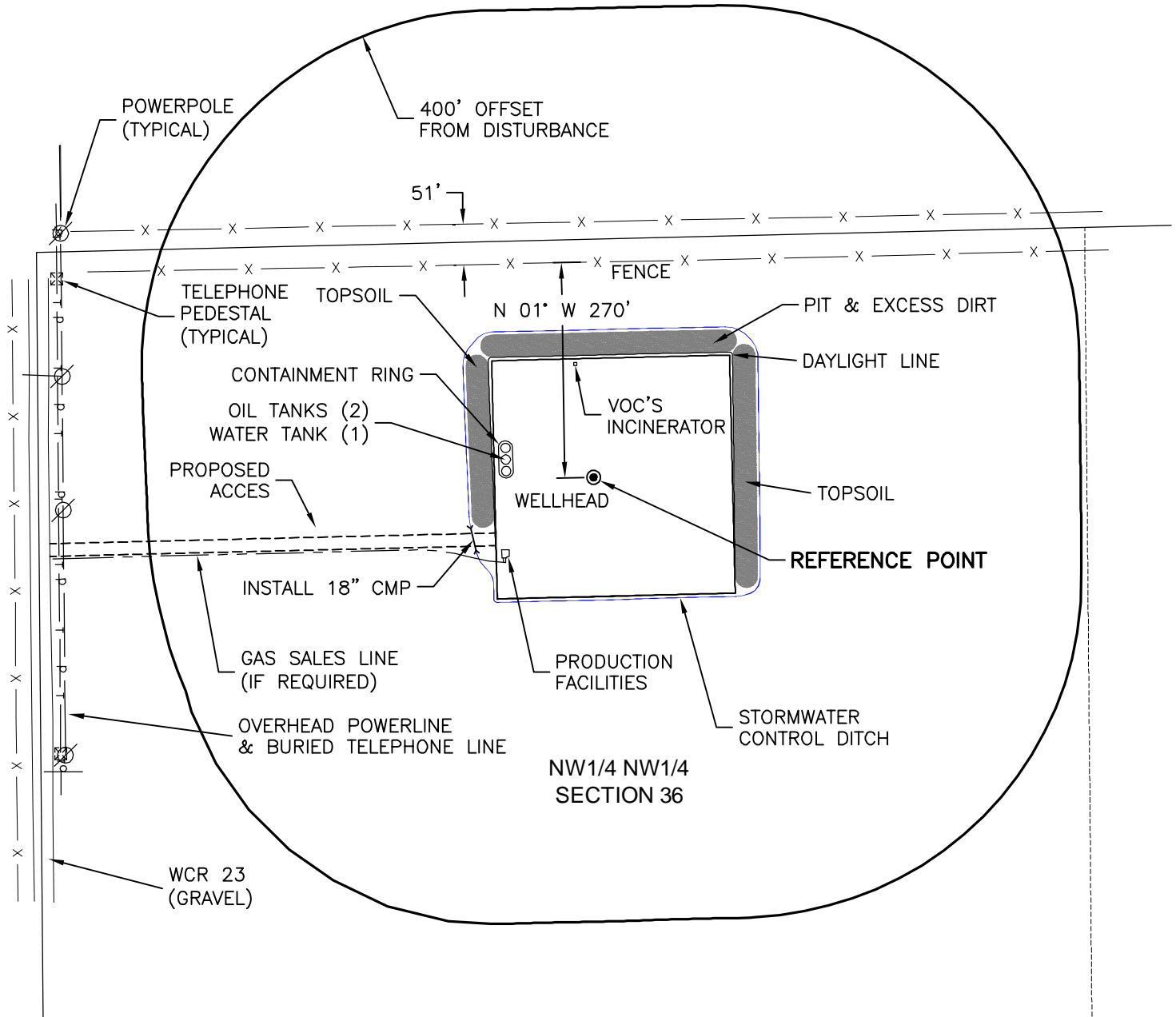
LONGITUDE: -104.846120

FOOTAGE: 300 FNL 700 FWL

GROUND ELEVATION: 5448.3

PDOP: 2.8 DATE: 3/3/2010

INSTRUMENT OPERATOR: DJM



North

0 200 400

Graphic Scale in Feet
1 inch = 200 feet

DISTURBANCE ACREAGE:

3.0± DRILLING OPERATIONS

1.0± INTERIM RECLAIM

3/4/10



LAND SURVEYING AND MAPPING
LAFAYETTE - WINTER PARK
Ph 303 666 0379 Fx 303 665 6320

RUBICON OIL & GAS LLC
PAWNEE 10-67-36-1

NW1/4 NW1/4 SEC. 36 T10N R67W
6th PM WELD COUNTY COLORADO