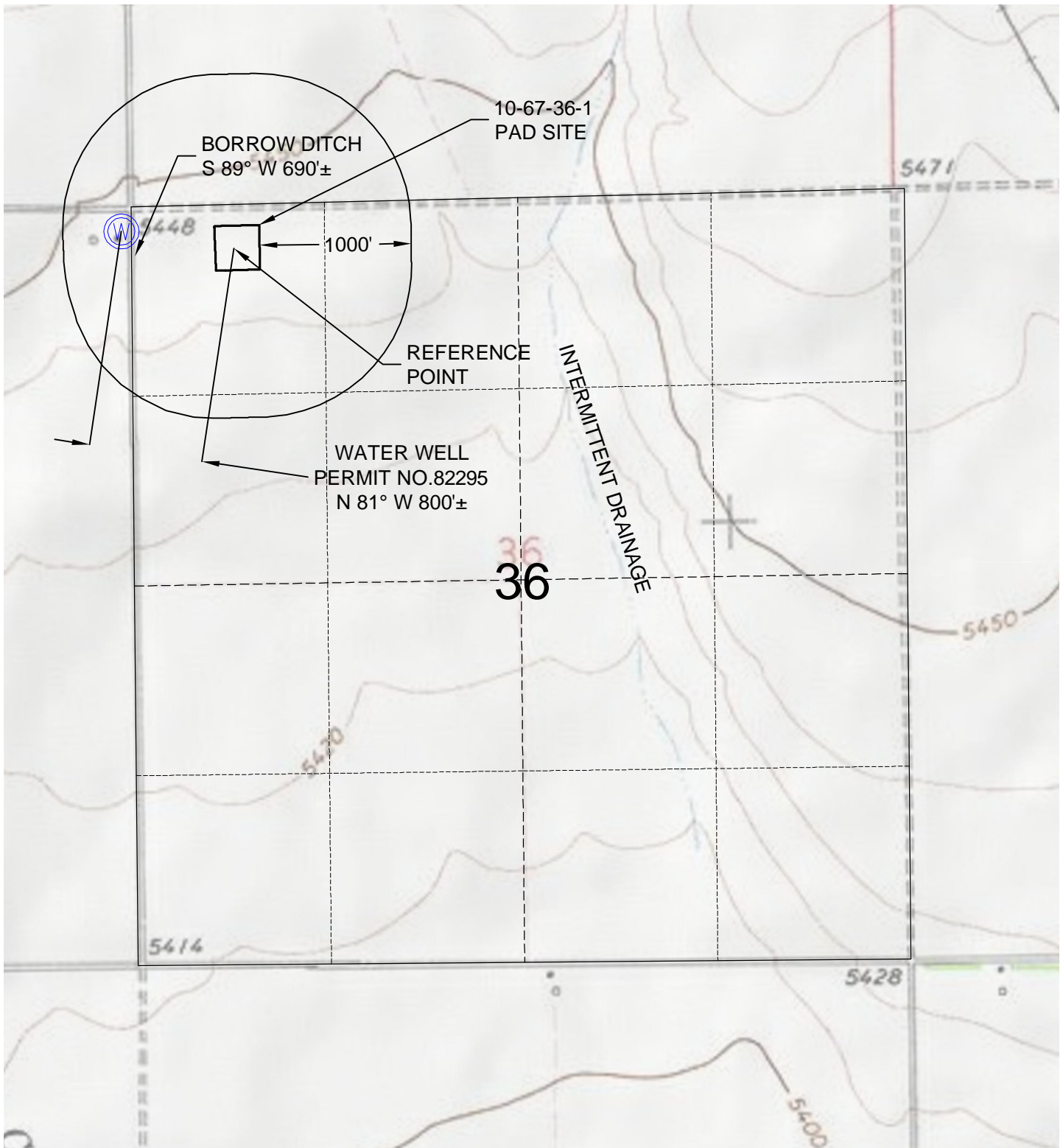
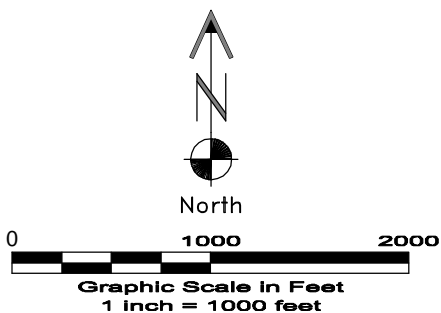


# HYDROLOGY MAP



DWG: G:\GEO SURV\2009\09035\Wellplat\2010 Wells\ Pawnee 10-67-36-1 F2A.dwg USER: Owner DATE: Mar 04, 2010 2:46pm



**GEO SURV**

LAND SURVEYING AND MAPPING  
LAFAYETTE - WINTER PARK  
Ph 303 666 0379 Fx 303 665 6320

**RUBICON OIL & GAS LLC**  
PAWNEE 10-67-36-1

NW1/4 NW1/4 SEC. 36 T10N R67W  
6th PM WELD COUNTY COLORADO

3/4/10