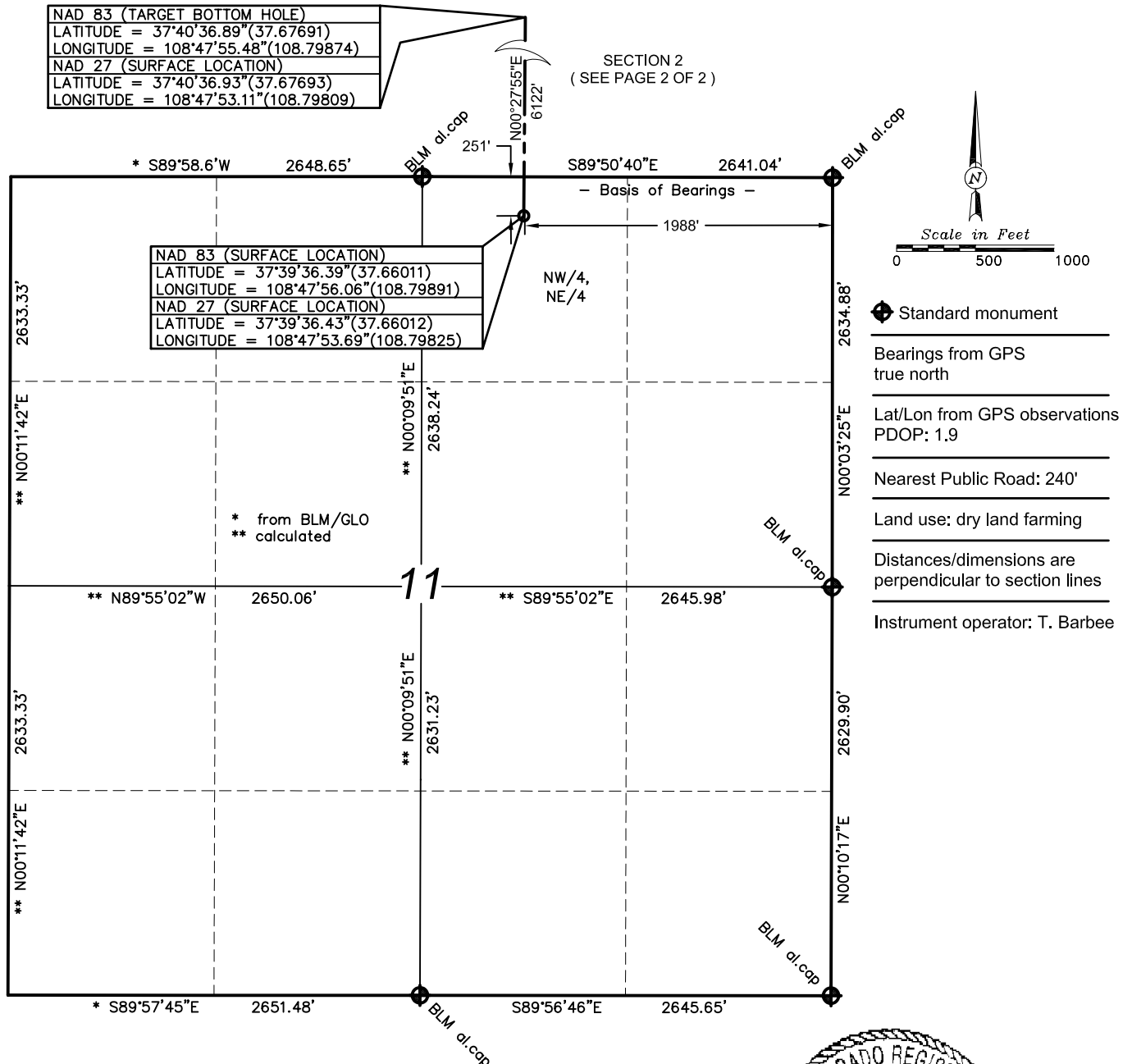


Well Location Plat



Bill Barrett Corporation Knuckles #2N-11-39-18

251' FNL & 1988' FEL (surface location)
 NW/4, NE/4, Section 11, T39N, R18W, NMPM
 Dolores County, Colorado
 6723.0' ground. el. (NAVD88)
 460' FNL & 1980' FEL (bottom hole)
 Lot 6, Section 2, T39N, R18W, NMPM
 Dolores County, Colorado

Date of Survey: 2/5/09
 Date of Plat: 2/9/09
 Revised: 4/14/10

Sheet 1 of 2

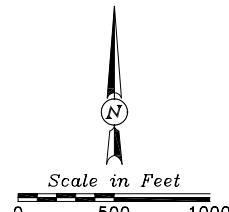
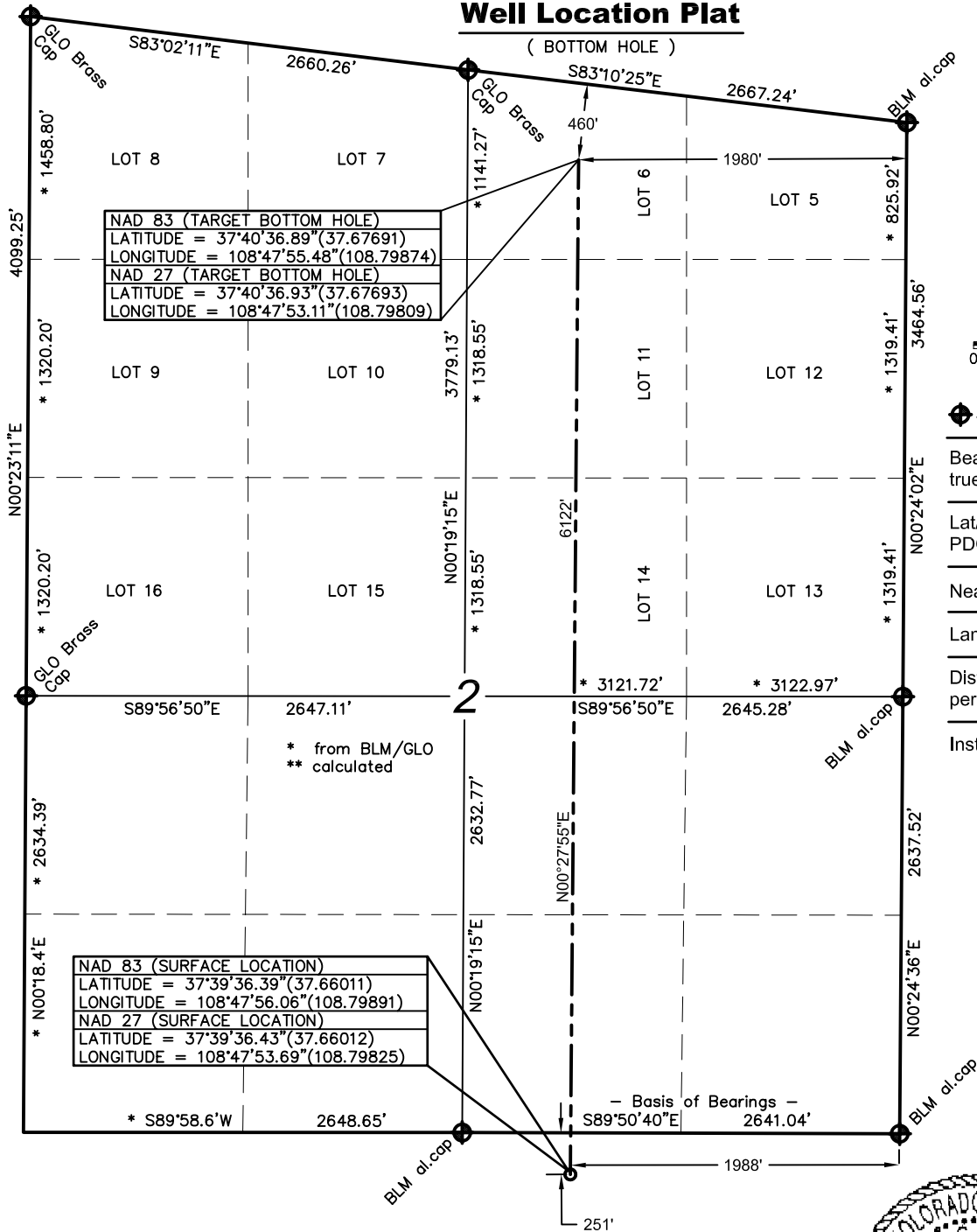


KNOW ALL MEN BY THESE PRESENTS that I, GERALD G. HUDDLESTON, do hereby certify that this plat was prepared from field notes of an actual survey made by me or under my supervision and that the same is true and accurate to the best of my knowledge and belief.

ANDERSON
 ENGINEERING COMPANY, INC.
 (801) 972-6222
www.andersoneng.com

Well Location Plat

(BOTTOM HOLE)



- ◆ Standard monument
- Bearings from GPS true north
- Lat/Lon from GPS observations PDOP: 1.9
- Nearest Public Road: 240'
- Land use: dry land farming
- Distances/dimensions are perpendicular to section lines
- Instrument operator: T. Barbee

Bill Barrett Corporation Knuckles #2N-11-39-18

251' FNL & 1988' FEL (surface location)
NW/4, NE/4, Section 11, T39N, R18W, NMPM
Dolores County, Colorado
6723.0' ground. el. (NAVD88)
460'FNL & 1980'FEL (bottom hole)
Lot 6, Section 2, T39N, R18W, NMPM
Dolores County, Colorado

Date of Survey: 2/5/09
Date of Plat: 2/9/09
Revised: 4/14/10

Sheet 2 of 2

SECTION 11
(SEE PAGE 1 OF 2)



KNOW ALL MEN BY THESE PRESENTS that I, GERALD G. HUDDLESTON, do hereby certify that this plat was prepared from field notes of an actual survey made by me or under my supervision and that the same is true and accurate to the best of my knowledge and belief.

ANDERSON
ENGINEERING COMPANY, INC.
(801) 972-6222
www.andersoneng.com