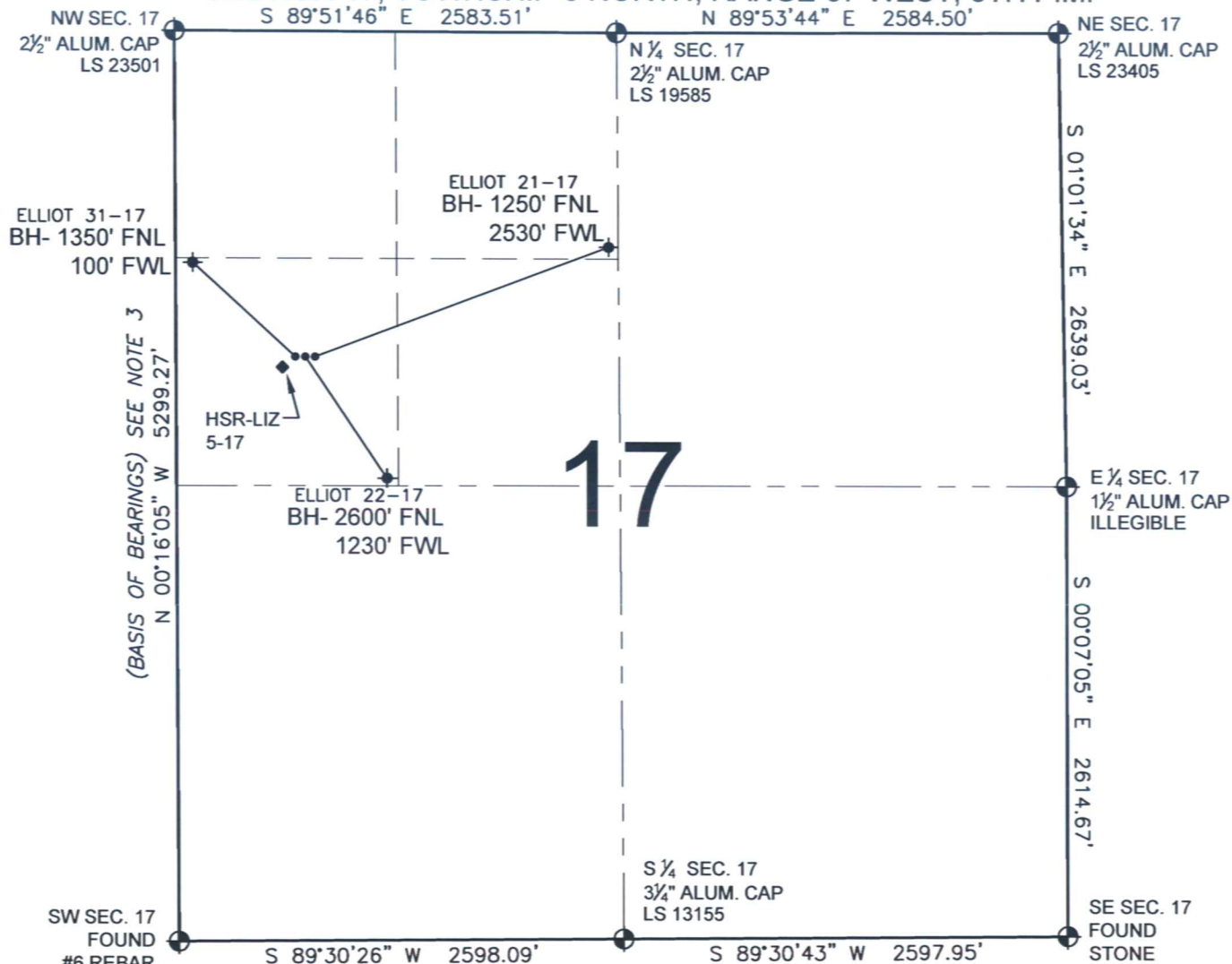


PAD DRAWING - ELLIOT 3 PAD

SECTION 17, TOWNSHIP 3 NORTH, RANGE 67 WEST, 6TH P.M.



LEGEND

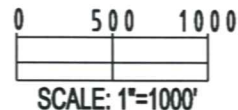
- ⊕ = EXISTING MONUMENT
- ⊙ = PROPOSED WELL
- ⊕ = BOTTOM HOLE
- ⊙ = EXISTING WELL
- BH= BOTTOM HOLE


NOTES:

- THIS SURVEY WAS DONE BY GPS METHODS AND CONFORMS TO THE MINIMUM STANDARDS SET BY THE C.O.G.C.C., RULE NO. 215
- ELEVATIONS SHOWN AT THE WELL HEAD, AS WELL AS HORIZONTAL CONTROL, ARE BASED ON GPS-RTK VALUES DERIVED FROM DOING 2-HOUR STATIC GPS SESSIONS AND REDUCTIONS USING O.P.U.S. SOLUTIONS.
VERTICAL = NAVD88; HORIZONTAL = NAD83/92
- THE BEARINGS SHOWN HEREON ARE BASED ON GPS OBSERVATIONS BETWEEN THE MONUMENTS SHOWN HEREON AS FOUND ON THE FIELD DATE BELOW.
- DISTANCES SHOWN ARE AT GROUND LEVEL, AS MEASURED IN THE FIELD, WITH TIES TO WELLS MEASURED AT A PERPENDICULAR TO SECTION LINES.

NOTES:

- ELLIOT 31-17 TO BE AT 1895' FNL, 696' FWL.
- BOTTOM HOLE AT 1350' FNL & 100' FWL.
- ELLIOT 22-17 TO BE AT 1895' FNL, 726' FWL.
- BOTTOM HOLE AT 2600' FNL & 1230' FWL.
- ELLIOT 21-17 TO BE AT 1895' FNL, 756' FWL.
- BOTTOM HOLE AT 1250' FNL & 2530' FWL.
- HSR-LIZ 5-17 IS 1936' FNL, 669' FWL.



| REVISIONS | | PREPARED BY:  PFS Petroleum Field Services, LLC 1801 W. 13th Ave. Denver, CO 80204 |
|-----------|------|---|
| INITIAL | DATE | |
| | | |
| | | |
| | | |
| | | |

KERR-MCGEE OIL & GAS ONSHORE LP

FIELD DATE:
12-15-09

DRAWING DATE:
12-23-09

BY:
SMF

PAD NAME:
ELLIOT 3 PAD

SURFACE LOCATION:

WELD COUNTY, COLORADO
SW 1/4 NW 1/4, SEC. 17, T3N, R67W