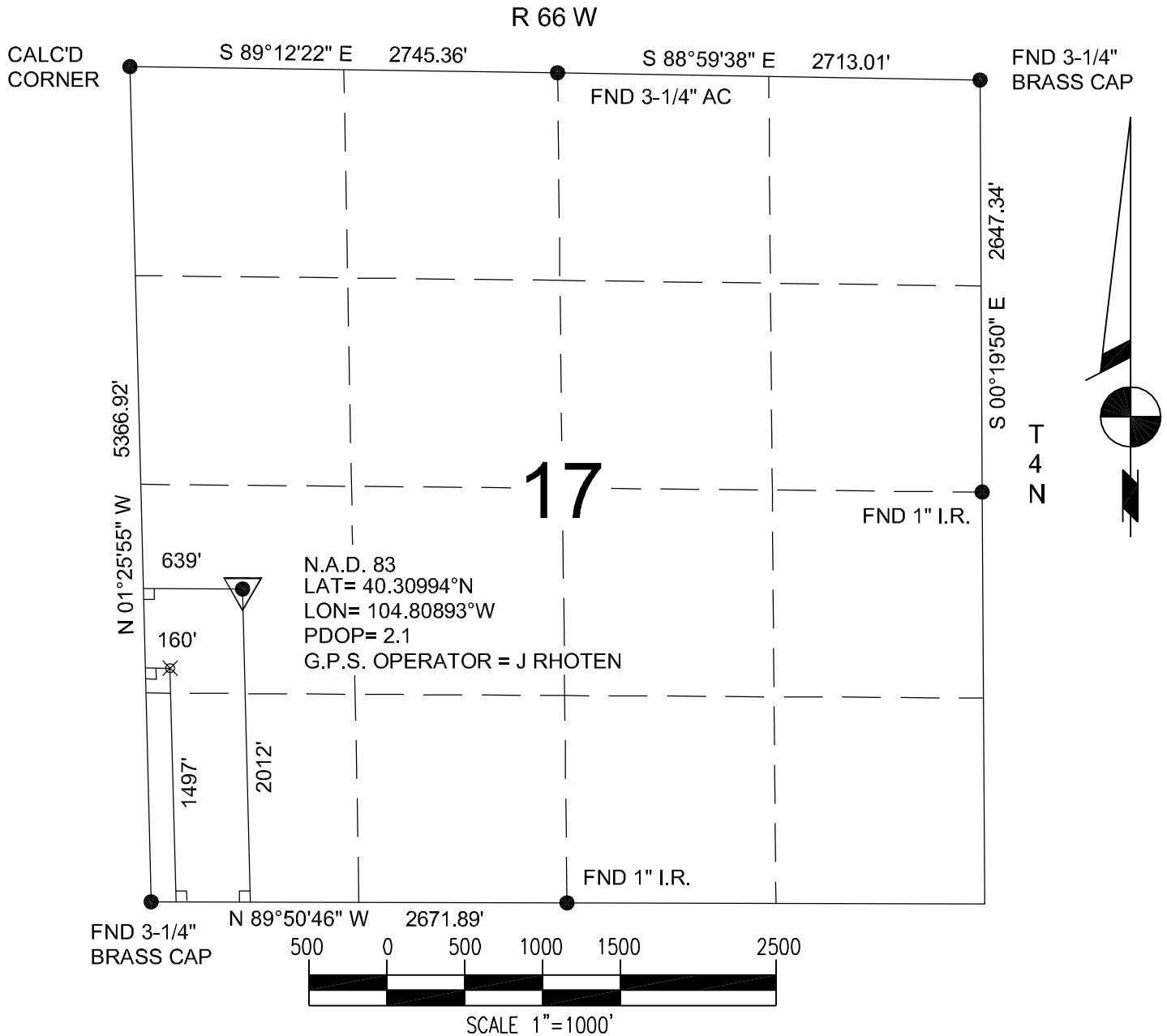


BASIS OF BEARINGS: THE SOUTH LINE OF THE SW 1/4 OF SECTION 17, AS SHOWN HEREON.



Power Surveying Co., Inc. of Frederick, Colorado has in accordance with a request from SHERRY GLASS for KP KAUFFMAN CO.

determined the location of FRONT RANGE 12-17-33 to be 2012' FSL & 639' FWL Section 17, Township 4 NORTH Range 66 WEST of the Sixth Principal Meridian, WELD County, COLORADO

#### LOCATION NOTES

LOCATION FALLS IN: PASTURE GROUND

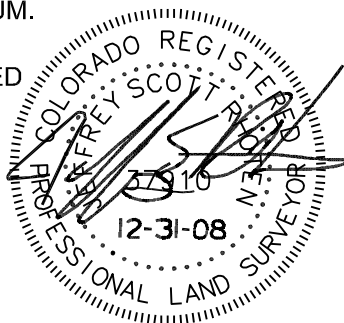
IMPROVEMENTS: EXISTING WELL 50' NORTHEAST OF LOCATION.

ELEVATION DETERMINED FROM NAVD 1988 DATUM.  
GROUND ELEVATION = 4711'

DISTANCES AND BEARINGS ARE FIELD MEASURED  
UNLESS OTHERWISE NOTED.

#### LEGEND

- SECTION CORNER (AS NOTED)
- △ PROPOSED WELL LOCATION
- ⊗ PROPOSED BOTTOM HOLE LOCATION



7800 MILLER DRIVE UNIT C  
FREDERICK, COLORADO 80504  
303-702-1617

JEFFREY SCOTT RHOTEN  
COLORADO P.L.S. # 37910

FIELD DATE: 12-12-06 WO# 501-06-1140A  
DATE OF COMPLETION: 12-31-08