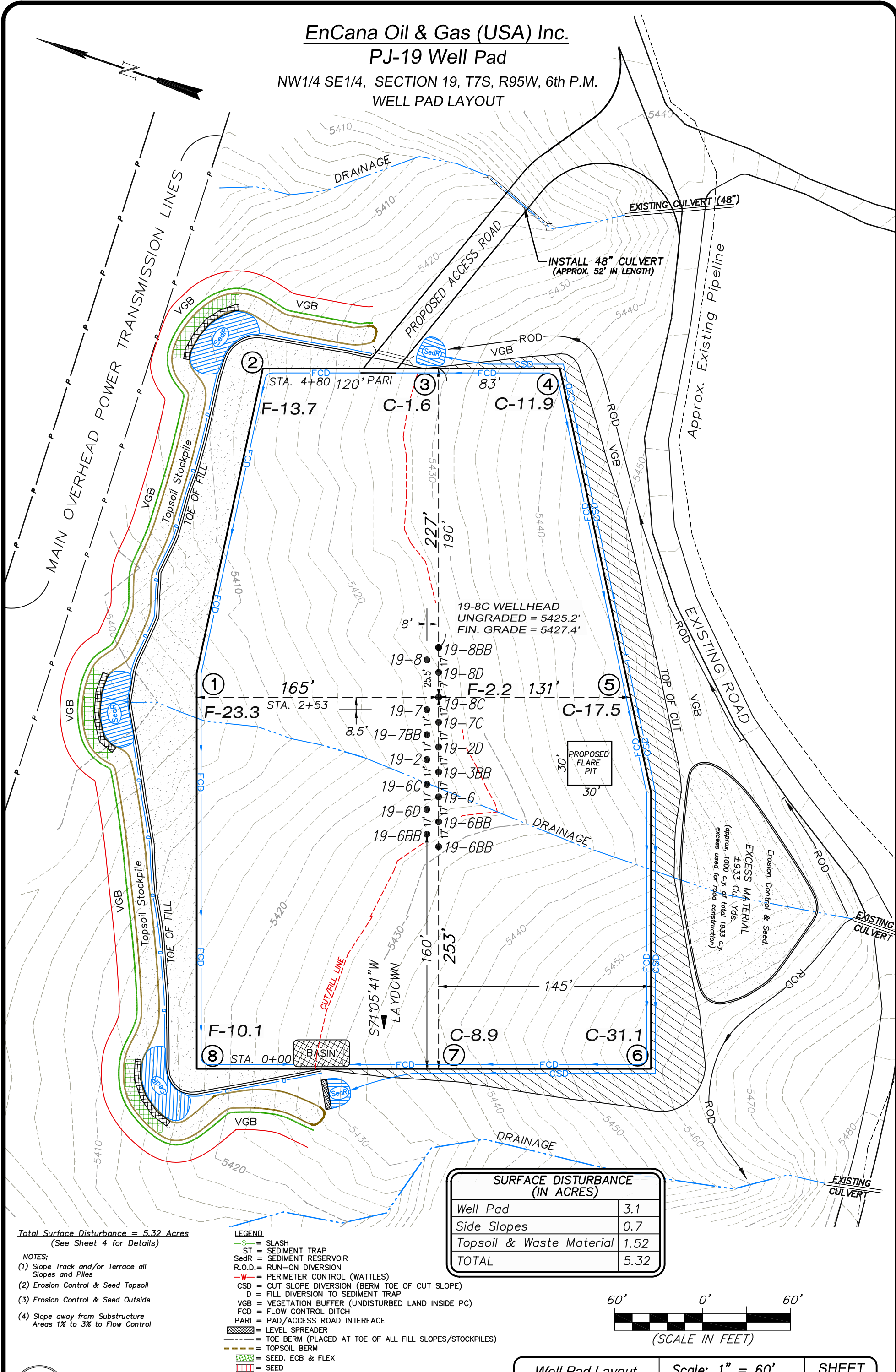


EnCana Oil & Gas (USA) Inc.

PJ-19 Well Pad

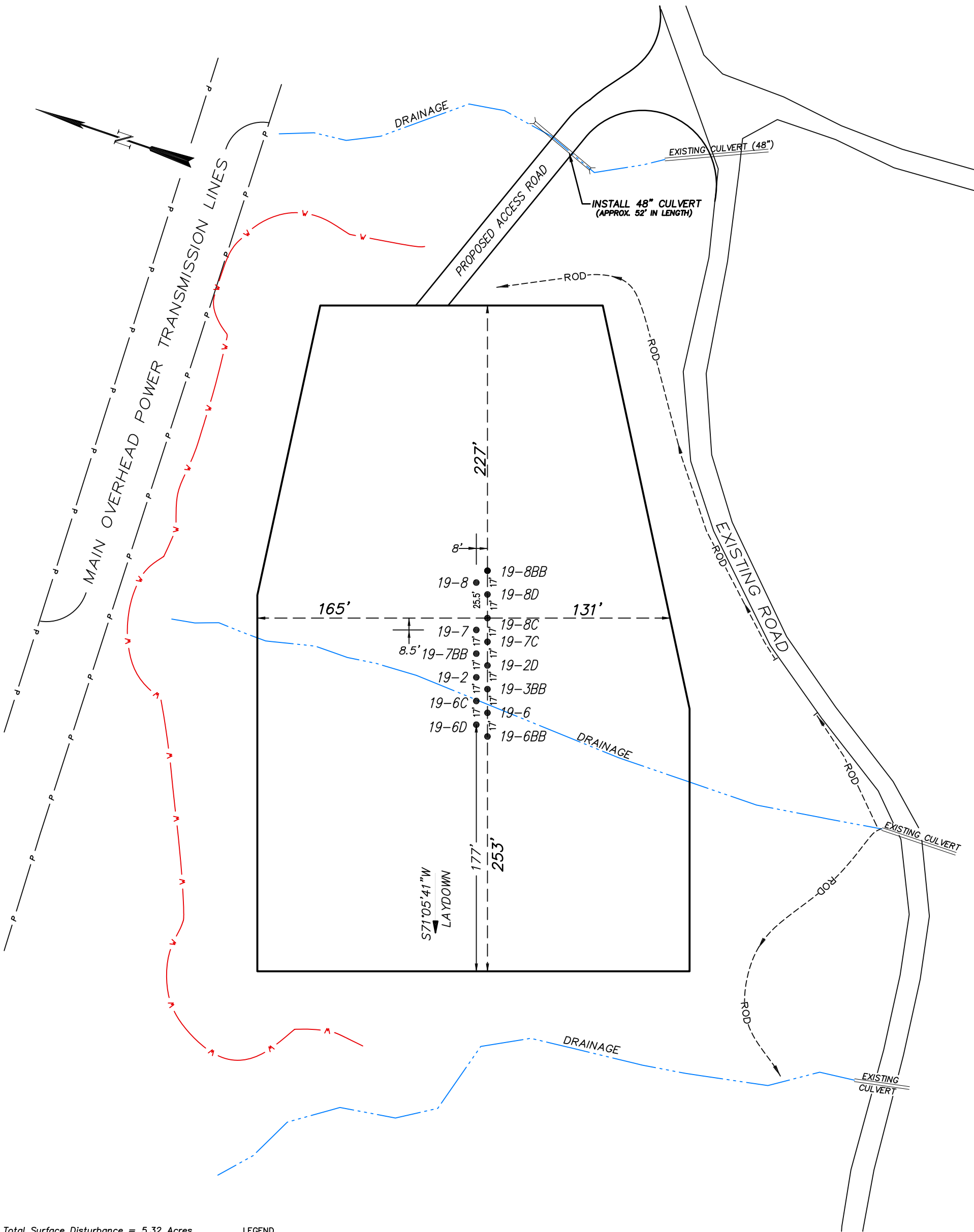
NW1/4 SE1/4, SECTION 19, T7S, R95W, 6th P.M.  
WELL PAD LAYOUT



EnCana Oil & Gas (USA) Inc.

PJ-19 Well Pad

NW1/4 SE1/4, SECTION 19, T7S, R95W, 6th P.M.  
PRE-CONSTRUCTION PLAT



Total Surface Disturbance = 5.32 Acres  
(See Sheet 4 for Details)

- NOTES:
- (1) Slope Track and/or Terrace all Slopes and Piles
  - (2) Erosion Control & Seed Topsoil
  - (3) Erosion Control & Seed Outside
  - (4) Slope away from Substructure Areas 1% to 3% to Flow Control

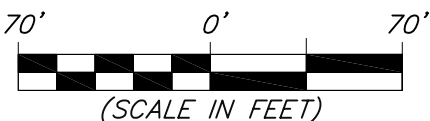
- LEGEND
- SLASH
  - ST = SEDIMENT TRAP
  - SedR = SEDIMENT RESERVOIR
  - R.O.D. = RUN-ON DIVERSION
  - PERIMETER CONTROL (WATTLES)
  - CSD = CUT SLOPE DIVERSION (BERM TOE OF CUT SLOPE)
  - D = FILL DIVERSION TO SEDIMENT TRAP
  - VCB = VEGETATION BUFFER (UNDISTURBED LAND INSIDE PC)
  - FCD = FLOW CONTROL DITCH
  - PARI = PAD/ACCESS ROAD INTERFACE
  - LEVEL SPREADER
  - TOE BERM (PLACED AT TOE OF ALL FILL SLOPES/STOCKPILES)
  - TOPSOIL BERM
  - SEED, ECB & FLEX
  - SEED

PRE-CONSTRUCTION PHASE COMPLETE,  
AUTHORIZATION TO CONTINUE  
CONSTRUCTION.

SIGNATURE: \_\_\_\_\_



906 Main Street  
Evanston, Wyoming 82930  
Phone No. (307) 789-4545



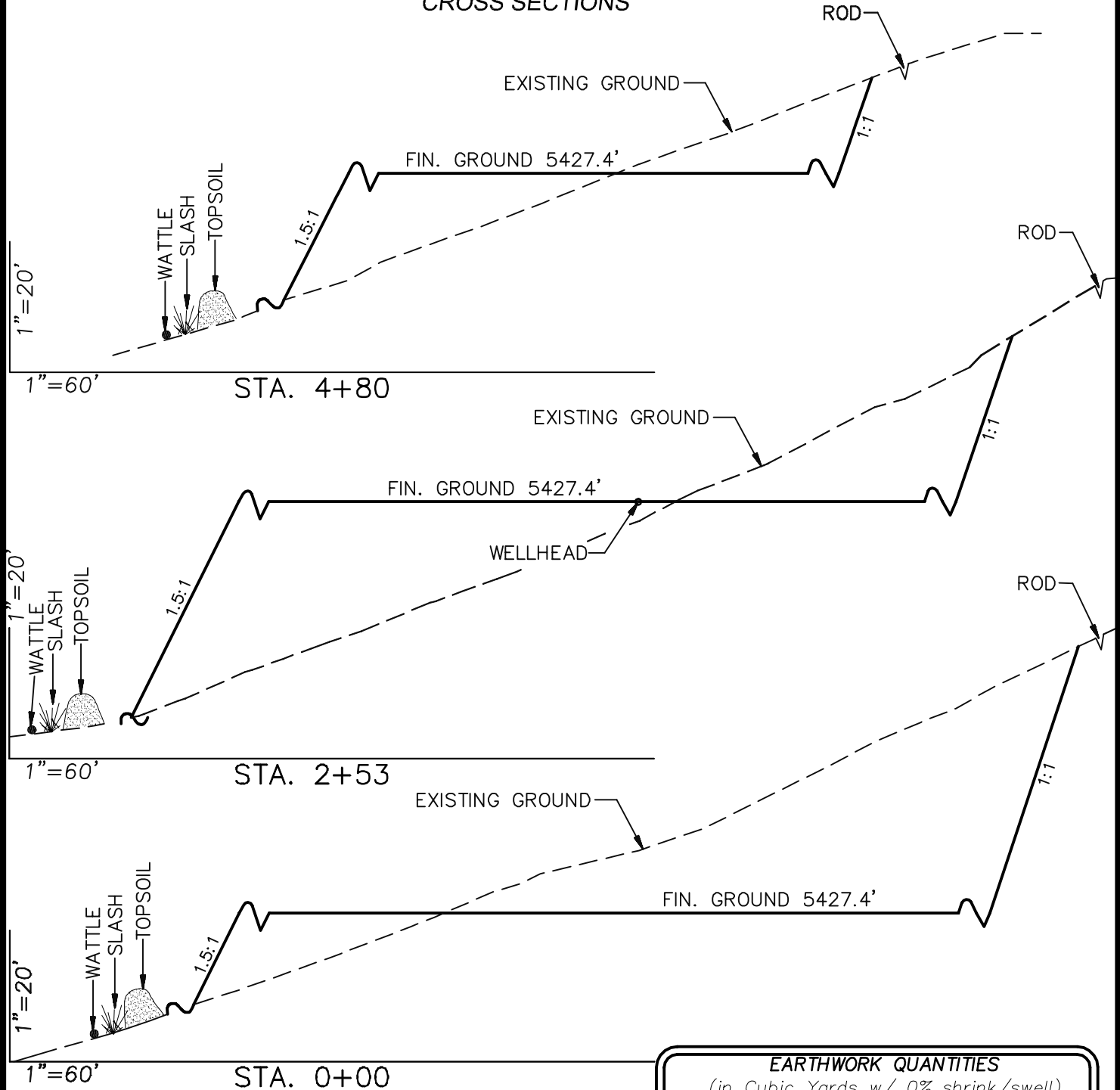
Pre-Construction		Scale: 1" = 70'	
Project No.	10-04-04	Date Surveyed:	1/26/10
Date Drawn:	2/25/10	Latest Revision	4/07/10

SHEET  
**3a**  
OF 10

# EnCana Oil & Gas (USA) Inc.

## Well Pad (PJ-19)

### CROSS SECTIONS



#### SURFACE DISTURBANCE (IN ACRES)

Well Pad	3.1
Side Slopes	0.7
Topsoil & Waste Material	1.52
TOTAL	5.32

**NOTE:**  
ALL CUT SLOPES ARE  
AT 1:1 AND ALL FILL  
SLOPES ARE AT 1.5:1  
UNLESS OTHERWISE  
NOTED.

#### EARTHWORK QUANTITIES

(in Cubic Yards w/ 0% shrink/swell)

ITEM	CUT	FILL	6" TOPSOIL	EXCESS
PAD	29964	28032	Topsoil not included in Excavation	1933
PIT	0	0		0
TOTALS	29964	28032	3091	* 1933

\* Approx. 1000 c.y. excess material to be used for road construction.



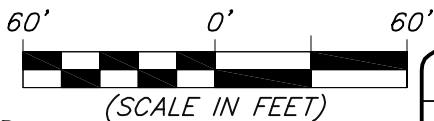
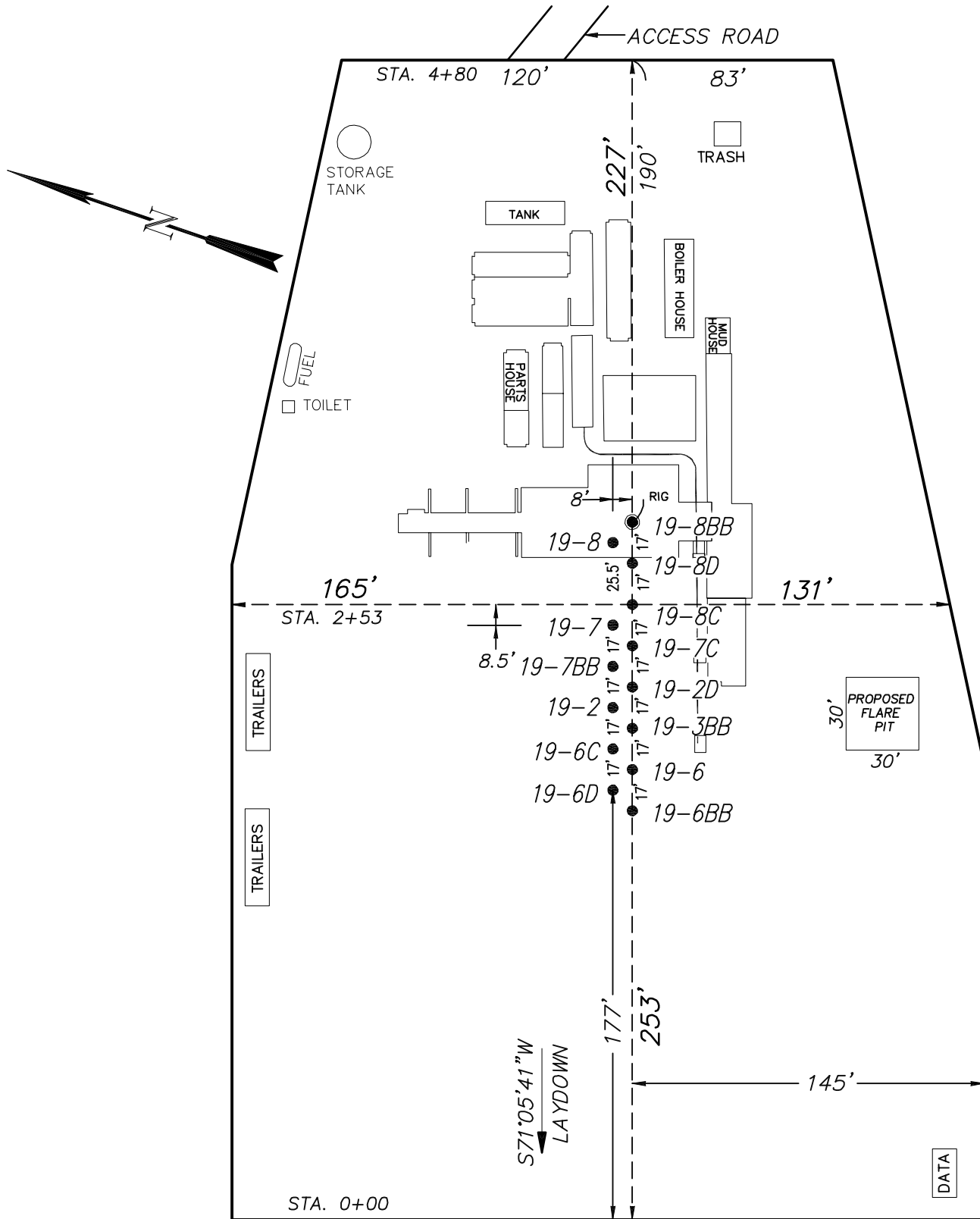
906 Main Street  
Evanston, Wyoming 82930  
Phone No. (307) 789-4545

Cross Sections		Scale: As Shown		SHEET <b>4</b> OF 10
Project No.	10-04-04	Date Surveyed:	1/26/10	
Date Drawn:	2/25/10	Latest Revision Date:	4/07/10	

# EnCana Oil & Gas (USA) Inc.

## Well Pad (PJ-19)

### TYPICAL RIG LAYOUT

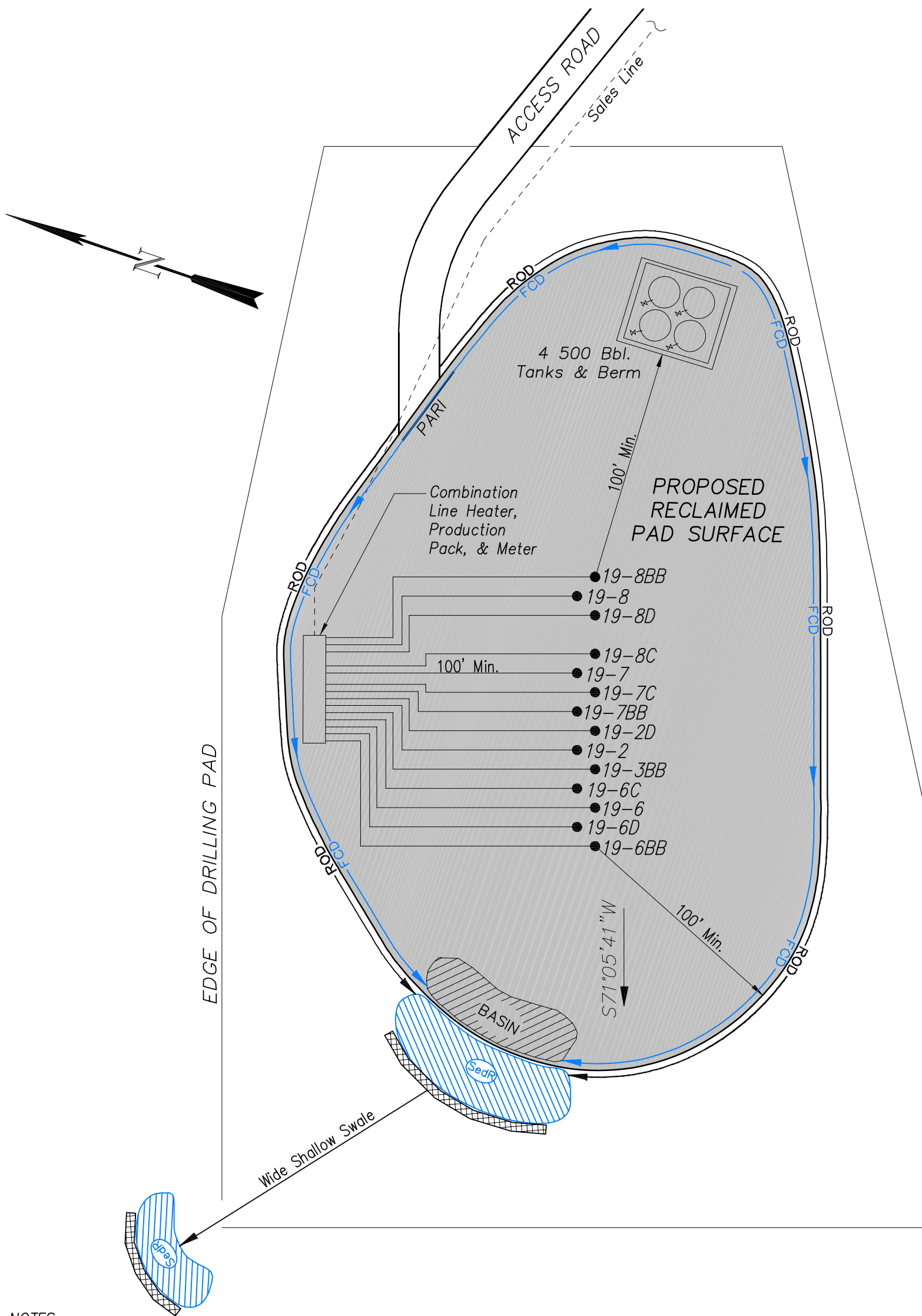


906 Main Street  
Evanston, Wyoming 82930  
Phone No. (307) 789-4545

Rig Layout		Scale: 1" = 60'		SHEET <b>5</b> OF 10
Project No.	10-04-04	Date Surveyed:	1/26/10	
Date Drawn:	2/25/10	Latest Revision Date:	4/07/10	



EnCana Oil & Gas (USA) Inc.  
PJ-19 Well Pad  
PRODUCTION SCHEMATIC



NOTES:

1. Set Tanks High so pad Entrance & Tank Area Can Drain to Pad Basin
2. Gravel Pad 75' from Wells & Around Tanks and Separators
3. Pad Drains to Pad Basin at a 3% to 5% slope
4. BMP Selection and Position may change Depending on Actual Conditions Encountered During the Construction Process

NOTE:

Actual Equipment Layout and Reclaimed Pad Surface Area May Change due to Production Requirements or Site Conditions.

ESTIMATED AREAS  
RECLAIMED AREA: 3.72 ACRES  
UNRECLAIMED AREA: 1.6 ACRES

LEGEND

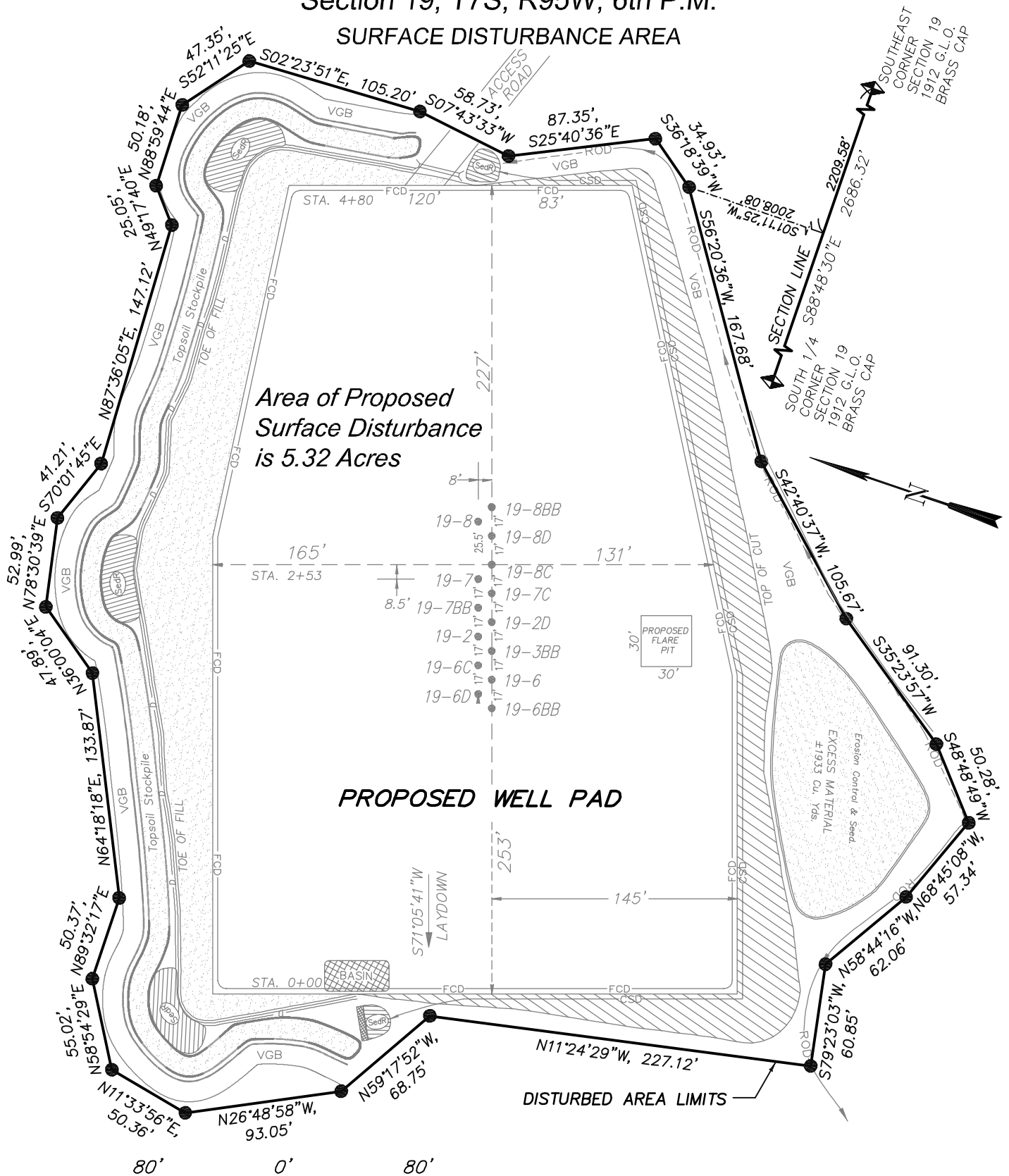
- SLASH
- ST = SEDIMENT TRAP
- SedR = SEDIMENT RESERVOIR
- R.O.D. = RUN-ON DIVERSION
- PERIMETER CONTROL (WATTLES)
- CSD = CUT SLOPE DIVERSION (BERM TOE OF CUT SLOPE)
- D = FILL DIVERSION TO SEDIMENT TRAP
- VGB = VEGETATION BUFFER (UNDISTURBED LAND INSIDE PC)
- FCD = FLOW CONTROL DITCH
- PARI = PAD/ACCESS ROAD INTERFACE
- LEVEL SPREADER
- TOE BERM (PLACED AT TOE OF ALL FILL SLOPES/STOCKPILES)
- TOPSOIL BERM
- SEED, ECB & FLEX
- SEED

# EnCana Oil & Gas (USA) Inc.

## Well Pad (PJ-19)

Section 19, T7S, R95W, 6th P.M.

### SURFACE DISTURBANCE AREA



(SCALE IN FEET)

906 Main Street  
Evanston, Wyoming 82930  
Phone No. (307) 789-4545

Surface Disturbance		Scale: 1" = 80'	SHEET <b>7</b> OF 10
Project No.	10-04-04	Date Surveyed: 1/26/10	
Date Drawn:	2/25/10	Latest Revision Date: 4/07/10	