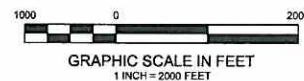
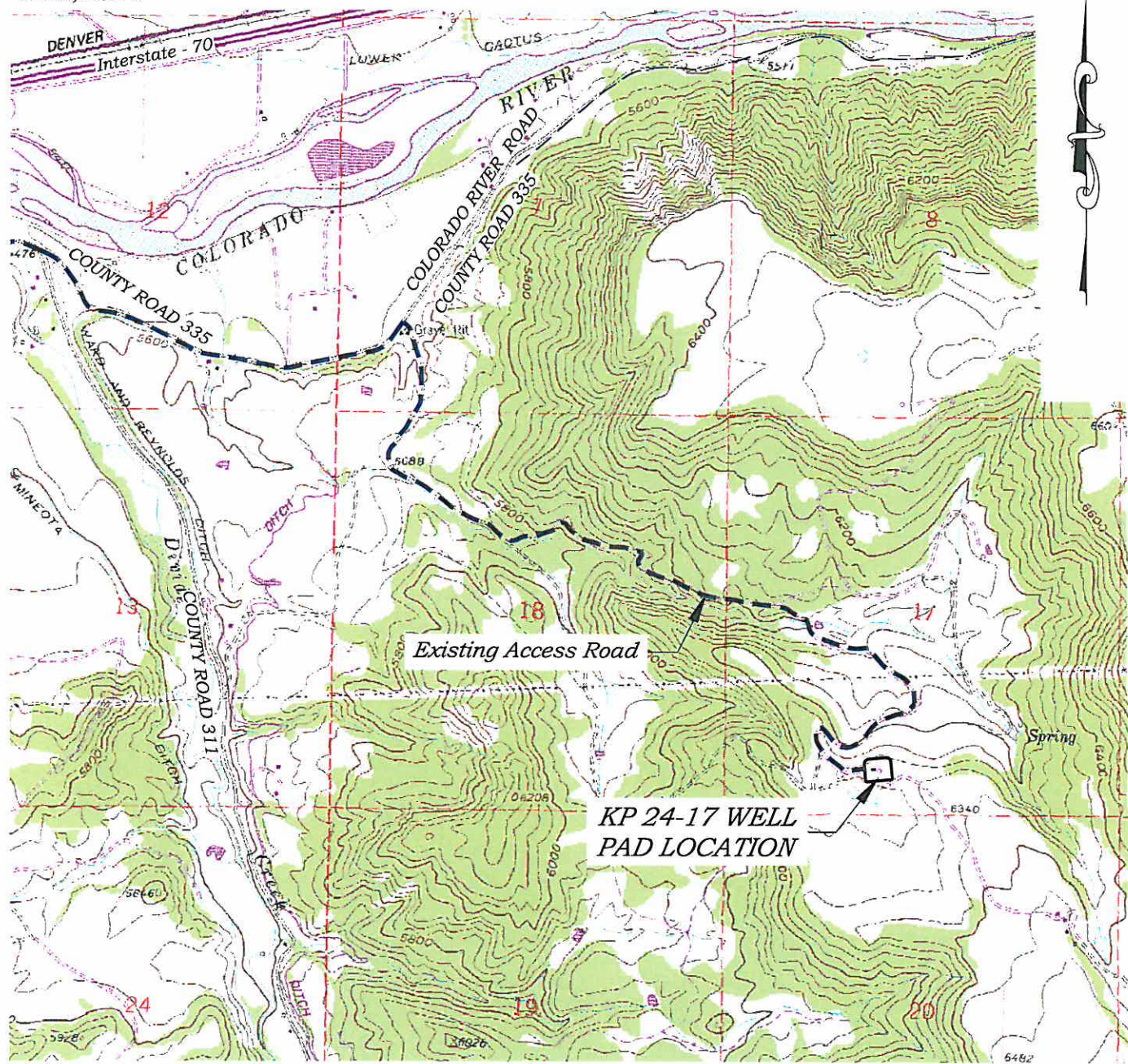


Section 17
T. 6 S., R 91 W



ACCESS DESCRIPTION:

FROM THE INTERSECTION OF COLORADO INTERSTATE 70 OVERPASS (Exit 97) AND RIVER FRONTAGE ROAD SOUTH OF SILT, COLORADO, PROCEED EAST ± 0.4 MILES ALONG RIVER FRONTAGE ROAD TO THE INTERSECTION WITH COUNTY ROAD 311 (DIVIDE CREEK ROAD), PROCEED RIGHT IN A SOUTHERLY TO EASTERLY DIRECTION ± 2.0 MILES TO A 'Y' INTERSECTION WITH COUNTY ROAD 335, PROCEED LEFT IN AN EASTERLY DIRECTION ALONG COUNTY ROAD 335 (Colorado River Road) ± 1.1 MILES TO THE INTERSECTION WITH A DIRT GRAVEL ROAD, PROCEED RIGHT IN A SOUTHEASTERLY DIRECTION ± 2.5 MILES TO THE EXISTING KP 24-17 DRILL PAD LOCATION, AS SHOWN HEREON.

136 East Third Street
Rifle, Colorado 81650
Ph. (970) 625-1330
Fax (970) 625-2773



BOOKCLIFF
Survey Services, Inc.

SCALE:
DATE:
PLAT:
PROJECT:
DFT:

1" = 2000'
3/24/10
5 of 9
Williams KP
cws

Construction Plan Prepared for:
Williams Williams Production, RMT

KP 24-17 Drill Pad - Plat 5
ACCESS ROAD MAP