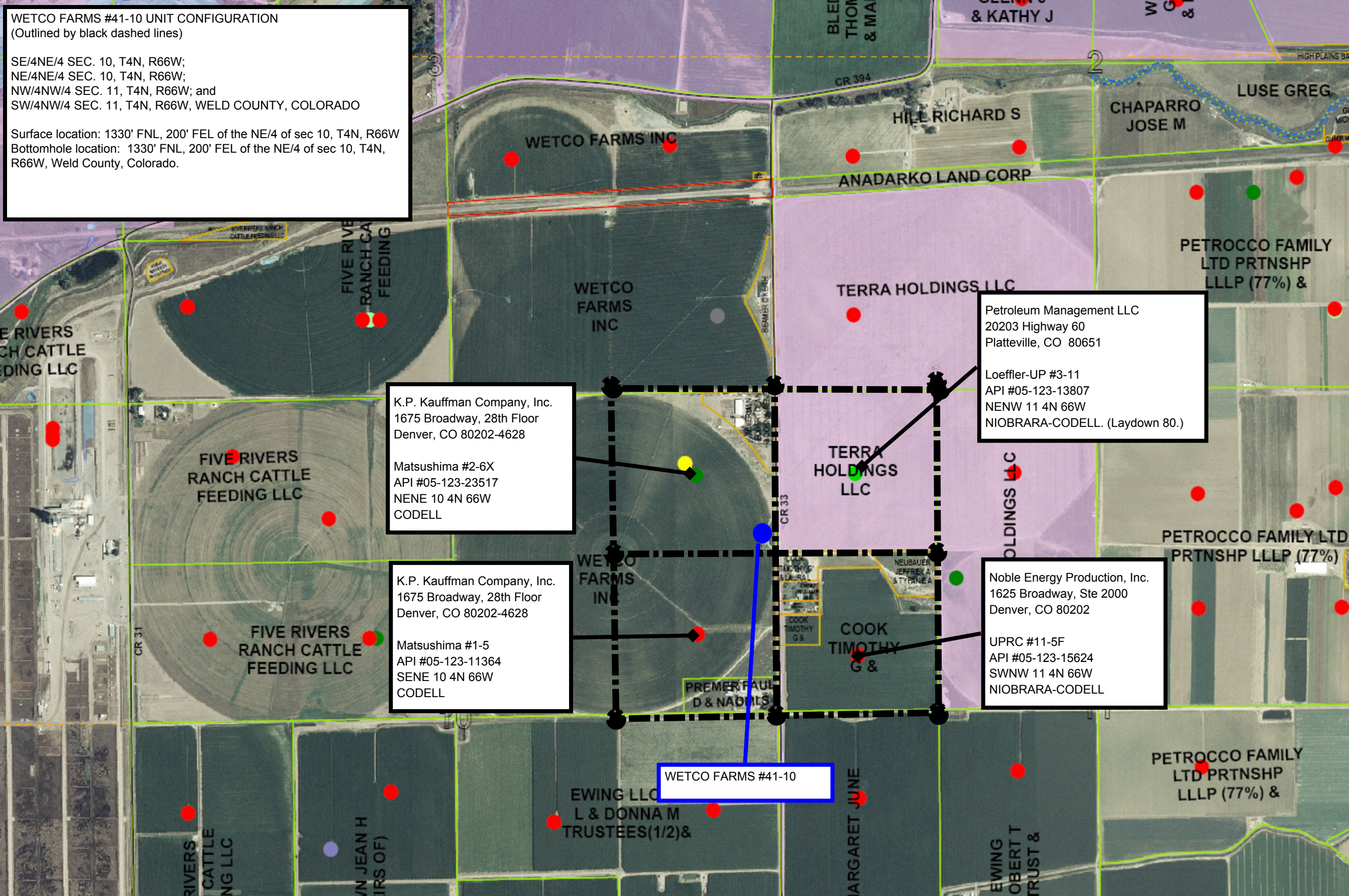


WETCO FARMS #41-10 UNIT CONFIGURATION  
(Outlined by black dashed lines)

SE/4NE/4 SEC. 10, T4N, R66W;  
NE/4NE/4 SEC. 10, T4N, R66W;  
NW/4NW/4 SEC. 11, T4N, R66W; and  
SW/4NW/4 SEC. 11, T4N, R66W, WELD COUNTY, COLORADO

Surface location: 1330' FNL, 200' FEL of the NE/4 of sec 10, T4N, R66W  
Bottomhole location: 1330' FNL, 200' FEL of the NE/4 of sec 10, T4N, R66W, Weld County, Colorado.



K.P. Kauffman Company, Inc.  
1675 Broadway, 28th Floor  
Denver, CO 80202-4628

Matsushima #2-6X  
API #05-123-23517  
NENE 10 4N 66W  
CODELL

K.P. Kauffman Company, Inc.  
1675 Broadway, 28th Floor  
Denver, CO 80202-4628

Matsushima #1-5  
API #05-123-11364  
SENE 10 4N 66W  
CODELL

Petroleum Management LLC  
20203 Highway 60  
Platteville, CO 80651

Loeffler-UP #3-11  
API #05-123-13807  
NENW 11 4N 66W  
NIOBRARA-CODELL. (Laydown 80.)

Noble Energy Production, Inc.  
1625 Broadway, Ste 2000  
Denver, CO 80202

UPRC #11-5F  
API #05-123-15624  
SWNW 11 4N 66W  
NIOBRARA-CODELL

WETCO FARMS #41-10