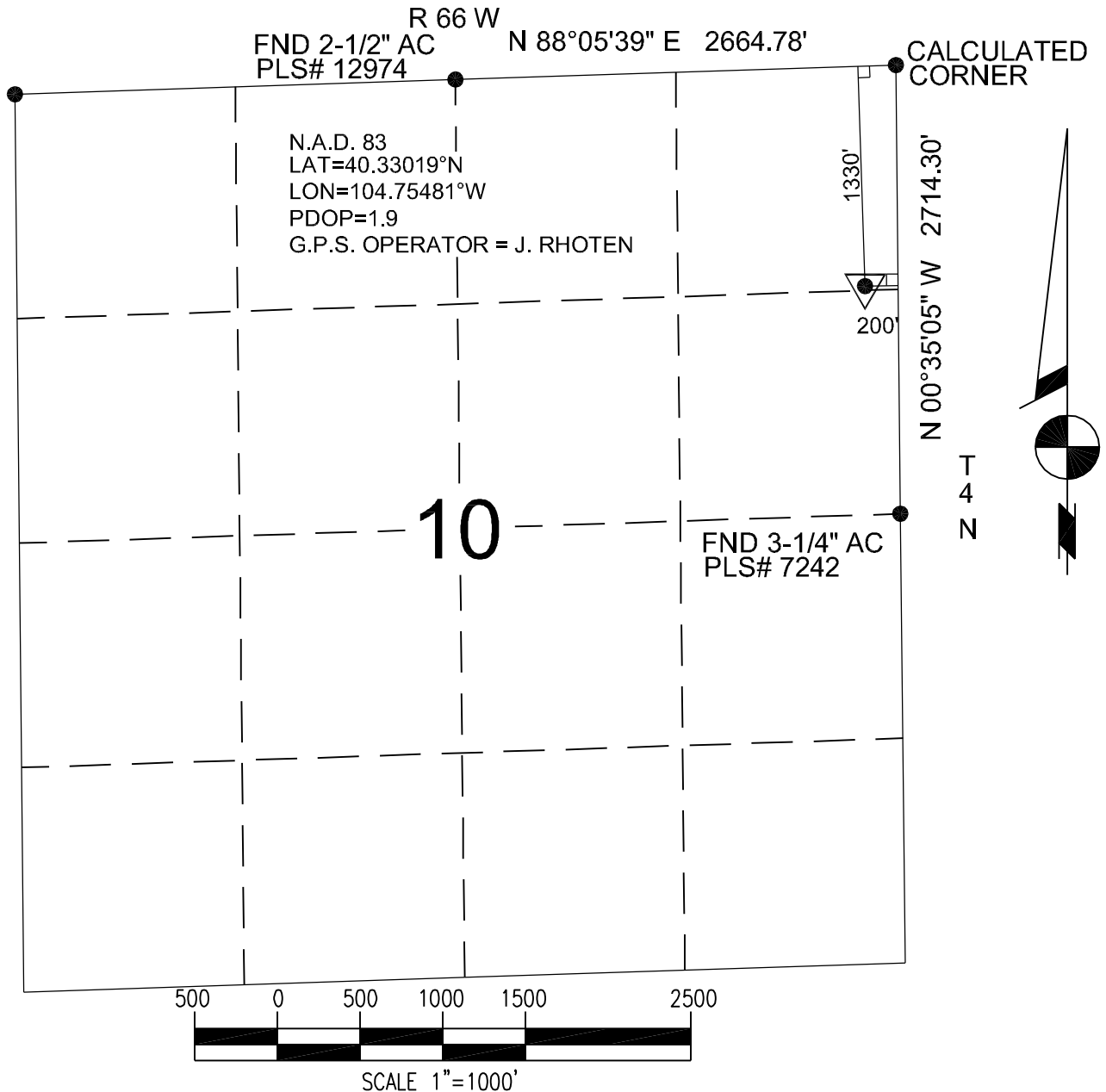


BASIS OF BEARINGS: THE EAST LINE OF THE NE 1/4 OF SECTION 10, AS SHOWN HEREON.



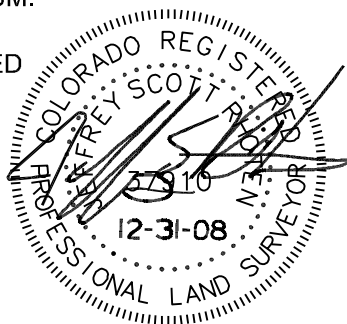
Power Surveying Co., Inc. of Frederick, Colorado has in accordance with a request from SHERRY GLASS for KP KAUFFMAN determined the location of WETCO FARMS 41-10 to be 1330' FNL & 200' FEL Section 10, Township 4 NORTH Range 66 WEST of the Sixth Principal Meridian, WELD County, Colorado

LOCATION NOTES

LOCATION FALLS IN: CORN FIELD
IMPROVEMENTS: INCINERATOR 105' E OF LOCATION. TANK BATTERY 140' NE OF LOCATION.
ELEVATION DETERMINED FROM NAVD 1988 DATUM.
GROUND ELEVATION = 4715'
DISTANCES AND BEARINGS ARE FIELD MEASURED UNLESS OTHERWISE NOTED.

LEGEND

- SECTION CORNER (AS NOTED)
- ▼ PROPOSED WELL LOCATION
- ⊗ BOTTOM OF HOLE LOCATION.



7800 MILLER DRIVE UNIT C
FREDERICK, COLORADO 80504
303-702-1617

Jeffery Scott Rhoten
COLORADO P.L.S. #37910

FIELD DATE: 7-12-07 WO# 501-06-1132B
DATE OF COMPLETION: 12-31-08