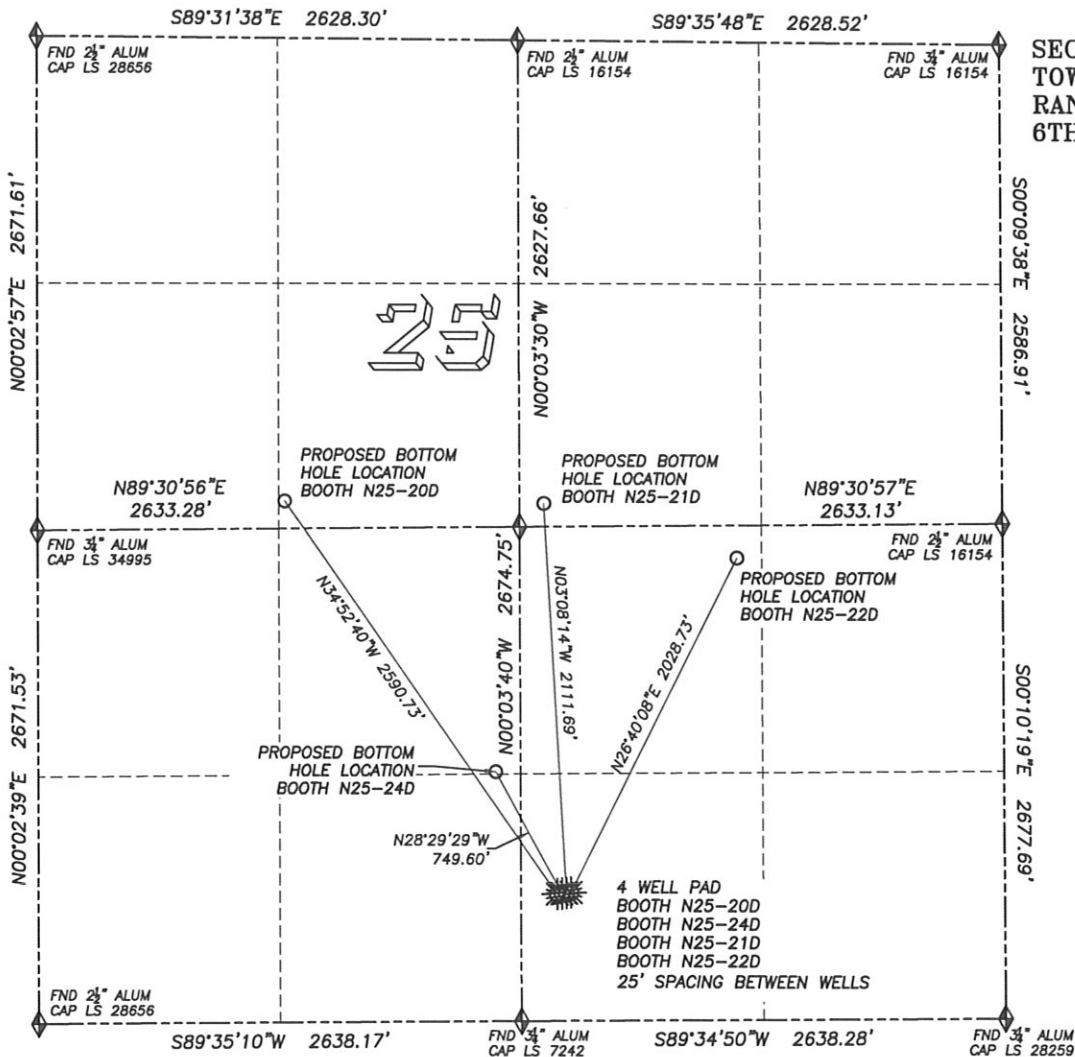
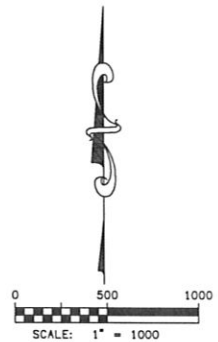


# DIRECTIONAL LAYOUT

## BOOTH N25-20D & BOOTH N25-24D BOOTH N25-21D & BOOTH N25-22D



SECTION 25,  
TOWNSHIP 5 NORTH  
RANGE 67 WEST  
6TH P.M.



- LEGEND**
- FOUND MONUMENT AS DESCRIBED
  - PROPOSED WELL
  - EXISTING WELL
  - BOTTOM HOLE
  - ABANDONED WELL

**NAD 83 LATITUDE AND LONGITUDE**

**BOOTH N25-20D**

**SURFACE HOLE:**

LATITUDE: N40.36516°  
LONGITUDE: W104.84081°  
ELEVATION: 4926'  
PDOP 1.5  
686' FSL, 2441' FEL

**BOTTOM HOLE:**

LATITUDE: N40.37099°  
LONGITUDE: W104.84612°  
2500' FNL, 1350' FWL

**NEAREST EXISTING WELL:**

BOOTH N25-15 SURFACE HOLE  
LATITUDE: N40.36559°  
LONGITUDE: W104.83908°  
ELEVATION: 4922'  
508' NORTHEAST

**NAD 83 LATITUDE AND LONGITUDE**

**BOOTH N25-24D**

**SURFACE HOLE:**

LATITUDE: N40.36517°  
LONGITUDE: W104.84072°  
ELEVATION: 4926'  
PDOP 1.2  
689' FSL, 2416' FEL

**BOTTOM HOLE:**

LATITUDE: N40.36698°  
LONGITUDE: W104.84200°  
1350' FSL, 2500' FWL

**NEAREST EXISTING WELL:**

BOOTH N25-15 SURFACE HOLE  
LATITUDE: N40.36559°  
LONGITUDE: W104.83908°  
ELEVATION: 4922'  
483' NORTHEAST

**NAD 83 LATITUDE AND LONGITUDE**

**BOOTH N25-21D**

**SURFACE HOLE:**

LATITUDE: N40.36518°  
LONGITUDE: W104.84063°  
ELEVATION: 4926'  
PDOP 1.1  
691' FSL, 2391' FEL

**BOTTOM HOLE:**

LATITUDE: N40.37096°  
LONGITUDE: W104.84104°  
2500' FNL, 2500' FEL

**NEAREST EXISTING WELL:**

BOOTH N25-15 SURFACE HOLE  
LATITUDE: N40.36559°  
LONGITUDE: W104.83908°  
ELEVATION: 4922'  
459' NORTHEAST

**NAD 83 LATITUDE AND LONGITUDE**

**BOOTH N25-22D**

**SURFACE HOLE:**

LATITUDE: N40.36518°  
LONGITUDE: W104.84054°  
ELEVATION: 4926'  
PDOP 1.5  
694' FSL, 2366' FEL

**BOTTOM HOLE:**

LATITUDE: N40.37016°  
LONGITUDE: W104.83727°  
2500' FSL, 1450' FEL

**NEAREST EXISTING WELL:**

BOOTH N25-15 SURFACE HOLE  
LATITUDE: N40.36559°  
LONGITUDE: W104.83908°  
ELEVATION: 4922'  
435' NORTHEAST