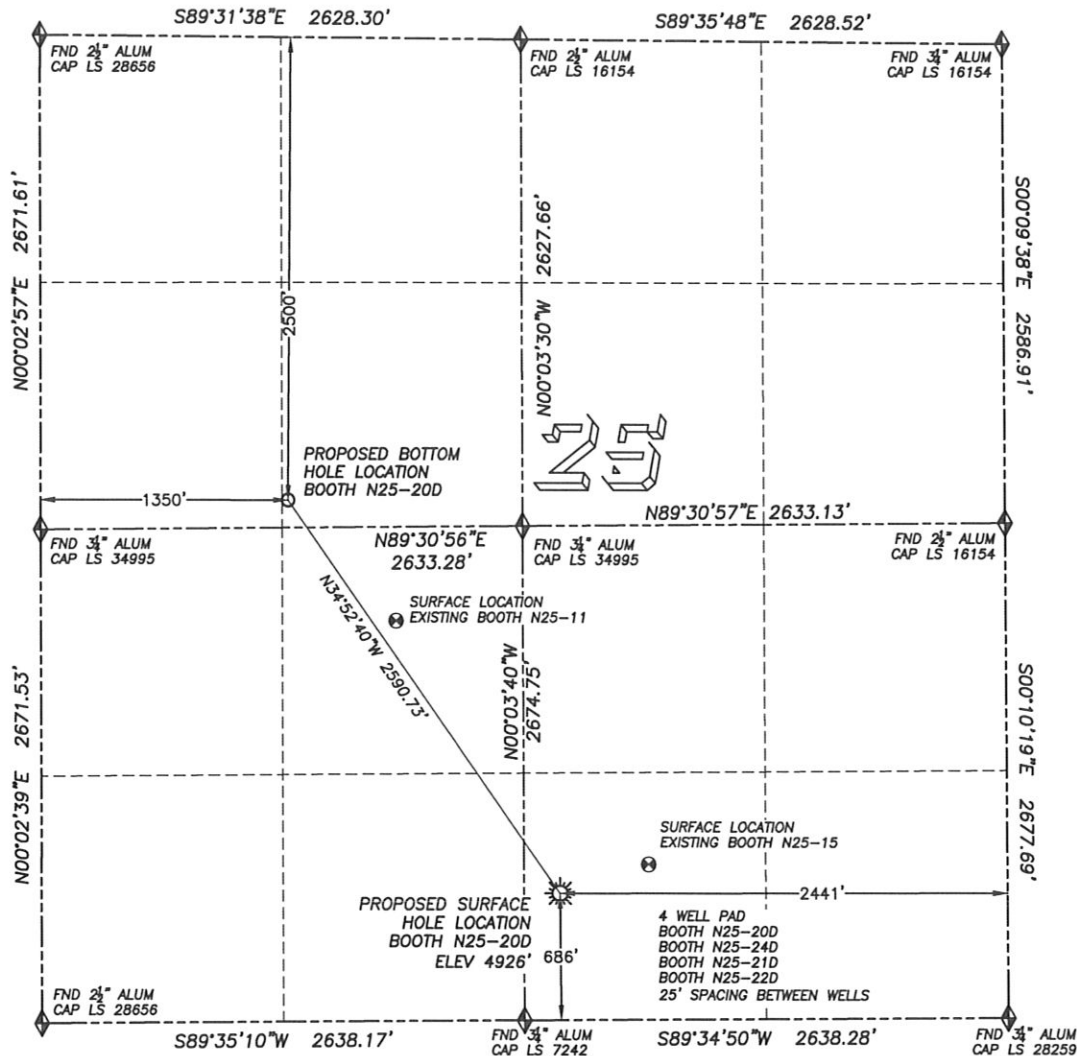


WELL LOCATION CERTIFICATE

BOOTH N25-20D

SECTION 25, TOWNSHIP 5 NORTH, RANGE 67 WEST OF THE 6TH PRINCIPAL MERIDIAN

**NAD 83 LATITUDE AND LONGITUDE****BOOTH N25-20D SURFACE HOLE:**

LATITUDE: N40.36516°
 LONGITUDE: W104.84081°
 ELEVATION: 4926'
 PDOP 1.5
 686' FSL, 2441' FEL

BOTTOM HOLE:

LATITUDE: N40.37099°
 LONGITUDE: W104.84612°
 2500' FNL, 1350' FWL

NEAREST EXISTING WELL:

BOOTH N25-15 SURFACE HOLE
 LATITUDE: N40.36559°
 LONGITUDE: W104.83908°
 ELEVATION: 4922'
 508' NORTHEAST

QUARTER/QUARTER: SW4/SE4

NEAREST APPARENT PROPERTY LINE:
 686'± SOUTH

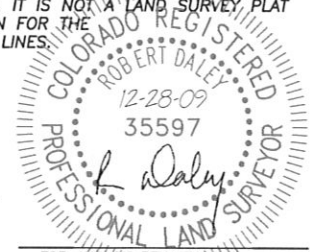
IN ACCORDANCE WITH A REQUEST FROM BILL BETSON OF NOBLE ENERGY INC., DALEY LAND SURVEYING, INC. HAS DETERMINED THE SURFACE LOCATION OF THE BOOTH N25-20D WELL TO BE 686' FSL, 2441' FEL, AS MEASURED AT NINETY (90) DEGREES FROM THE SECTION LINES OF SECTION 25, TOWNSHIP 5 NORTH, RANGE 67 WEST OF THE 6TH PRINCIPAL MERIDIAN, WELD COUNTY COLORADO. THE BOTTOM HOLE LOCATION PROVIDED BY THE CLIENT IS TO BE 2500' FNL, 1350' FWL OF SECTION 25, T.5N., R.67W.

I HEREBY CERTIFY THAT THIS WELL LOCATION CERTIFICATE WAS PREPARED BY ME OR UNDER MY DIRECT SUPERVISION, THAT THE WORK WAS COMPLETED ON 12/17/2009 FOR AND ON BEHALF OF NOBLE ENERGY, INC., AND THAT THIS MAP DOES NOT REPRESENT A BOUNDARY SURVEY, IT IS NOT A LAND SURVEY PLAT OR AN IMPROVEMENT SURVEY PLAT AND IT IS NOT TO BE RELIED UPON FOR THE ESTABLISHMENT OF FENCE, BUILDING OR OTHER FUTURE IMPROVEMENT LINES.

NOTES:

- 1) BASIS OF BEARING FOR THIS MAP IS ASSUMED AND BASED UPON GPS OBSERVATIONS MADE BETWEEN MONUMENTS LOCATED AT THE SOUTHEAST AND SOUTH QUARTER CORNERS OF SECTION 25, T.5N., R.67W., AND ALL BEARINGS SHOWN HEREON ARE RELATIVE THERETO.
- 2) HORIZONTAL DATUM IS NAD83.
- 3) VERTICAL DATUM IS NAVD88. ELEVATIONS ARE DERIVED FROM GPS-RTK OBSERVATIONS PROCESSED THROUGH OPUS, UTILIZING THE GEIOD03 MODEL.
- 4) SEE VISIBLE IMPROVEMENTS EXHIBIT FOR VISIBLE IMPROVEMENTS WITHIN 400' OF PROPOSED SURFACE HOLE LOCATION
- 5) SURFACE USE: OPEN FIELD

NOTICE: According to Colorado law you MUST commence any legal action based upon any defect in this W.L.C. within three years after you first discover such defect. In no event may any action based upon any such defect in this W.L.C. be commenced more than ten years from the date of the certification shown hereon.



FOR AND ON BEHALF OF
 DALEY LAND SURVEYING INC.,
 Robert Daley, PLS 35597

SITE SKETCH BOOTH N25-20D

SECTION 25, TOWNSHIP 5 NORTH, RANGE 67 WEST OF THE 6TH PRINCIPAL MERIDIAN

NOTES:

- 1) THIS DOES NOT REPRESENT A BOUNDARY SURVEY
- 2) THE LATITUDES AND LONGITUDES SHOWN ARE REFERENCED TO NAD83
- 3) DATUM FOR ELEVATION IS NAVD88. ELEVATIONS ARE DERIVED FROM GPS-RTK OBSERVATIONS PROCESSED THROUGH OPUS, UTILIZING THE GEOID03 MODEL

①

BOOTH N25-5

SW/NW SEC. 25
1828' FNL, 496' FWL
1091' NW OF PROPOSED
BOTTOM HOLE LOCATION
LAT. N40.37286°
LONG. W104.84919°
EL: 5018'
PDOP 2.4

②

BOOTH N25-6

SE/NW SEC. 25
1878' FNL, 1877' FWL
812' NE OF PROPOSED
BOTTOM HOLE LOCATION
LAT. N40.37269°
LONG. W104.84423°
EL: 5011'
PDOP 1.6

③

BOOTH N25-11

NE/SW SEC. 25
2166' FSL, 1939' FWL
876' SE OF PROPOSED
BOTTOM HOLE LOCATION
LAT. N40.36921°
LONG. W104.84401°
EL: 4963'
PDOP 2.8

④

BOOTH N25-14

NW/SW SEC. 25
1397' FSL, 1301' FWL
1426' S OF PROPOSED
BOTTOM HOLE LOCATION
LAT. N40.36708°
LONG. W104.84630°
EL: 4935'
PDOP 1.6

⑥

BOOTH N25-25

NW/SW SEC. 25
1398' FSL, 1240' FWL
1430' S OF PROPOSED
BOTTOM HOLE LOCATION
LAT. N40.36708°
LONG. W104.84652°
EL: 4935'
PDOP 2.3

⑤

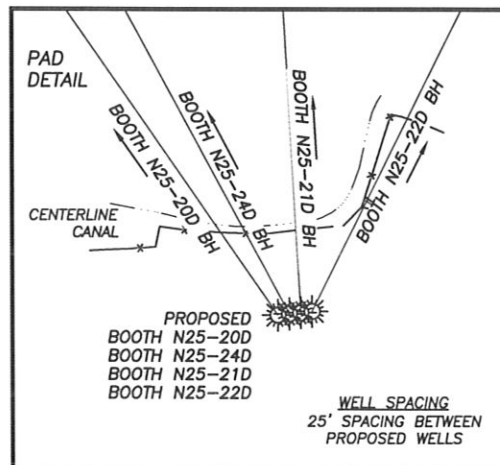
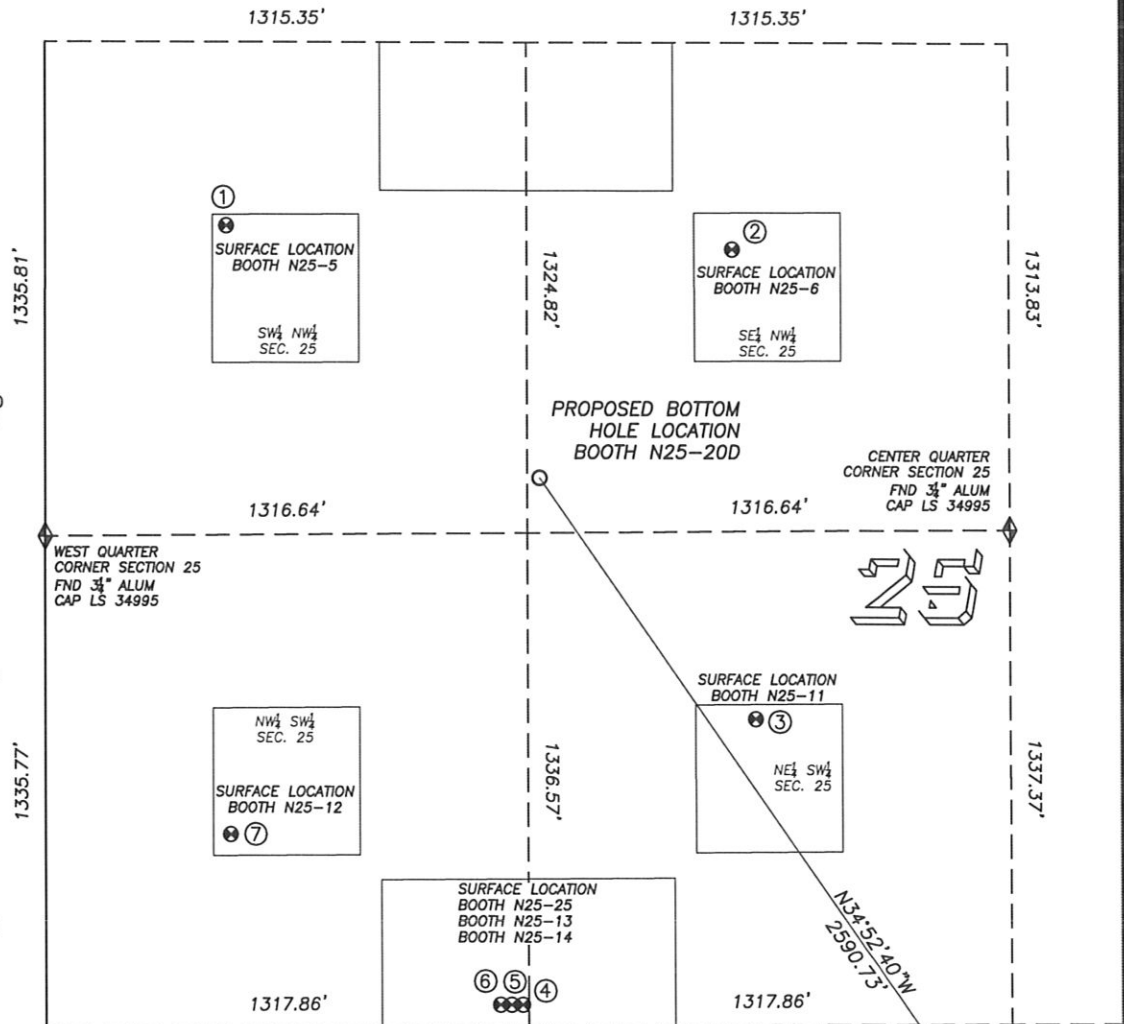
BOOTH N25-13

NW/SW SEC. 25
1397' FSL, 1270' FWL
1428' S OF PROPOSED
BOTTOM HOLE LOCATION
LAT. N40.36708°
LONG. W104.84641°
EL: 4935'
PDOP 2.3

⑦

BOOTH N25-12

NW/SW SEC. 25
1862' FSL, 506' FWL
1284' SW OF PROPOSED
BOTTOM HOLE LOCATION
LAT. N40.36834°
LONG. W104.84916°
EL: 4949'
PDOP 1.7



PROPOSED SURFACE
HOLE LOCATION
BOOTH N25-20D
ELEV 4926'

LEGEND

- FOUND MONUMENT AS DESCRIBED
- PROPOSED WELL
- EXISTING WELL
- BOTTOM HOLE
- ABANDONED WELL

0 500
SCALE: 1" = 500'