

RUBICON OIL & GAS LLC

DRIVEWAY PICTURES FOR PAWNEE 3-16-1 PAD

**PAD LOCATION SE ¼ SW ¼ SECTION 16 T9N R66W
WELD COUNTY COLORADO**



WCR 104 WEST



WCR 104 EAST



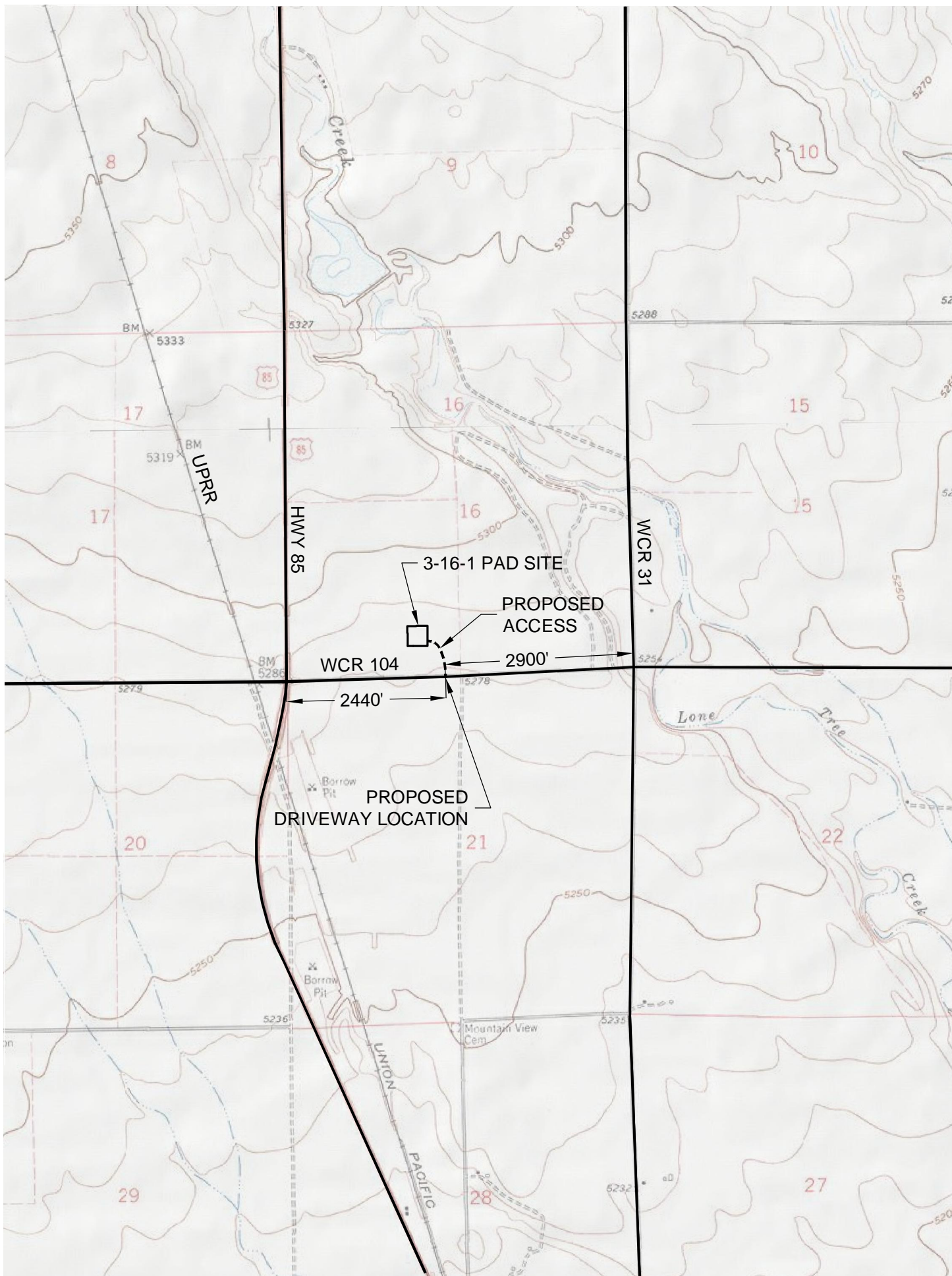
INTO ACCESS

DATE OF PICTURES 3/18/2010



GEOSURV Inc. 520 Stacy CT Suite B Lafayette CO 80026 ph 303 666 0379 fx 303 665 6320

G:\GEOSURV\2009\09035\Wellplats\2010 Wells\Pawnee 3-16-1\Driveway\Pawnee 3-16-1 Driveway Pics.docx 3/25/2010 9:19:00 AM





North

CRP — FALLOW FIELD

CONSTRUCT NEW DRIVEWAY

BORROW DITCH

WCR 104
(GRAVEL SURFACE)

INSTALL 18" CMP