

# Topo Map

**OIL AND GAS WELLS**

- Oil and Gas Wells
- ✕ Temporary Point

**CITIES TOWNS PLACES**

- Towns and Places

**ROADS AND RRS**

- Major Highways

**SAN JUAN BASIN**

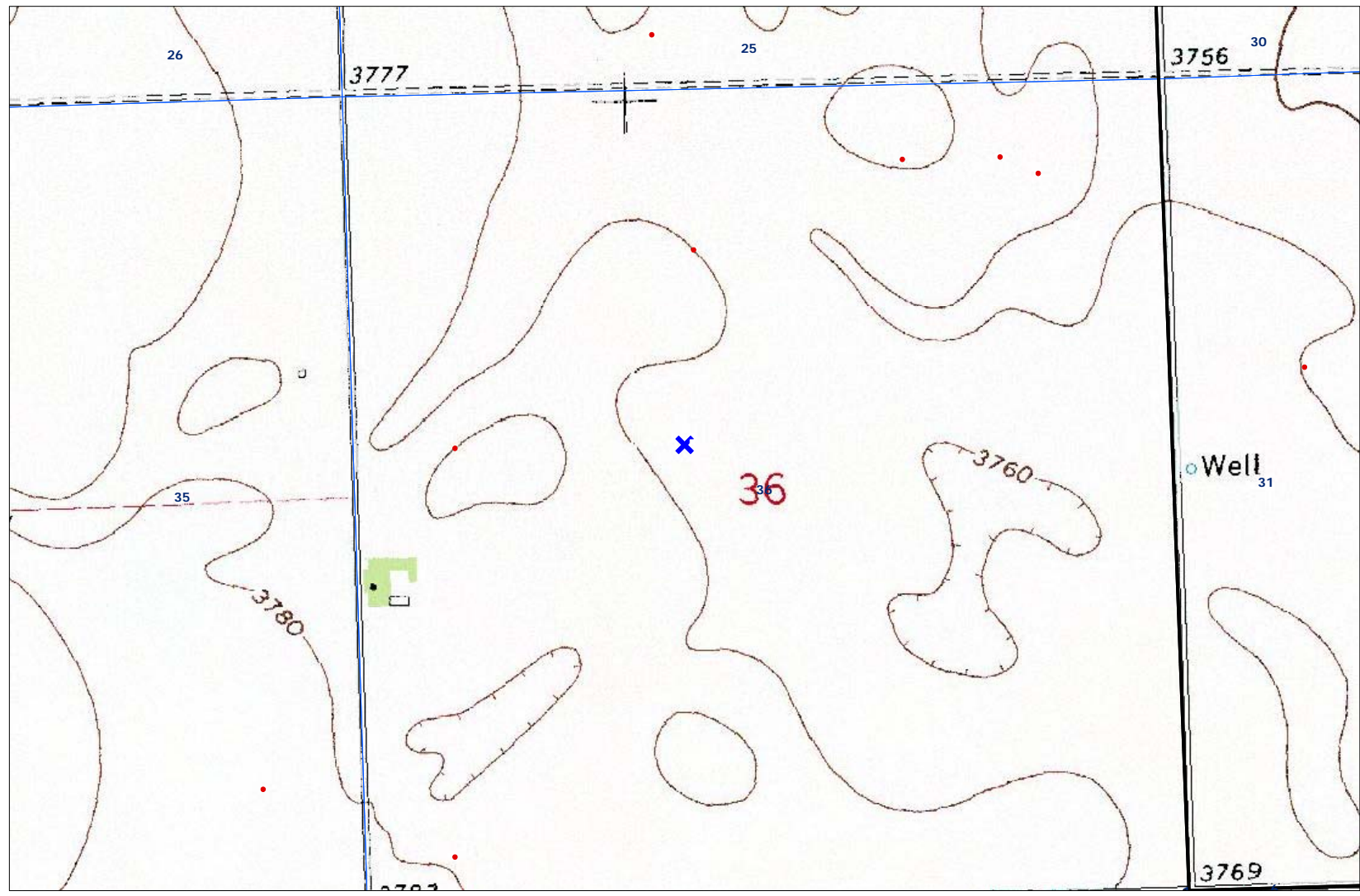
- - Fruitland PC

**MUNICIPAL BOUNDARIES**

- 

**TOPOS (1: 24K)**

- NE Colorado Topo



SCALE 1 : 12,429

