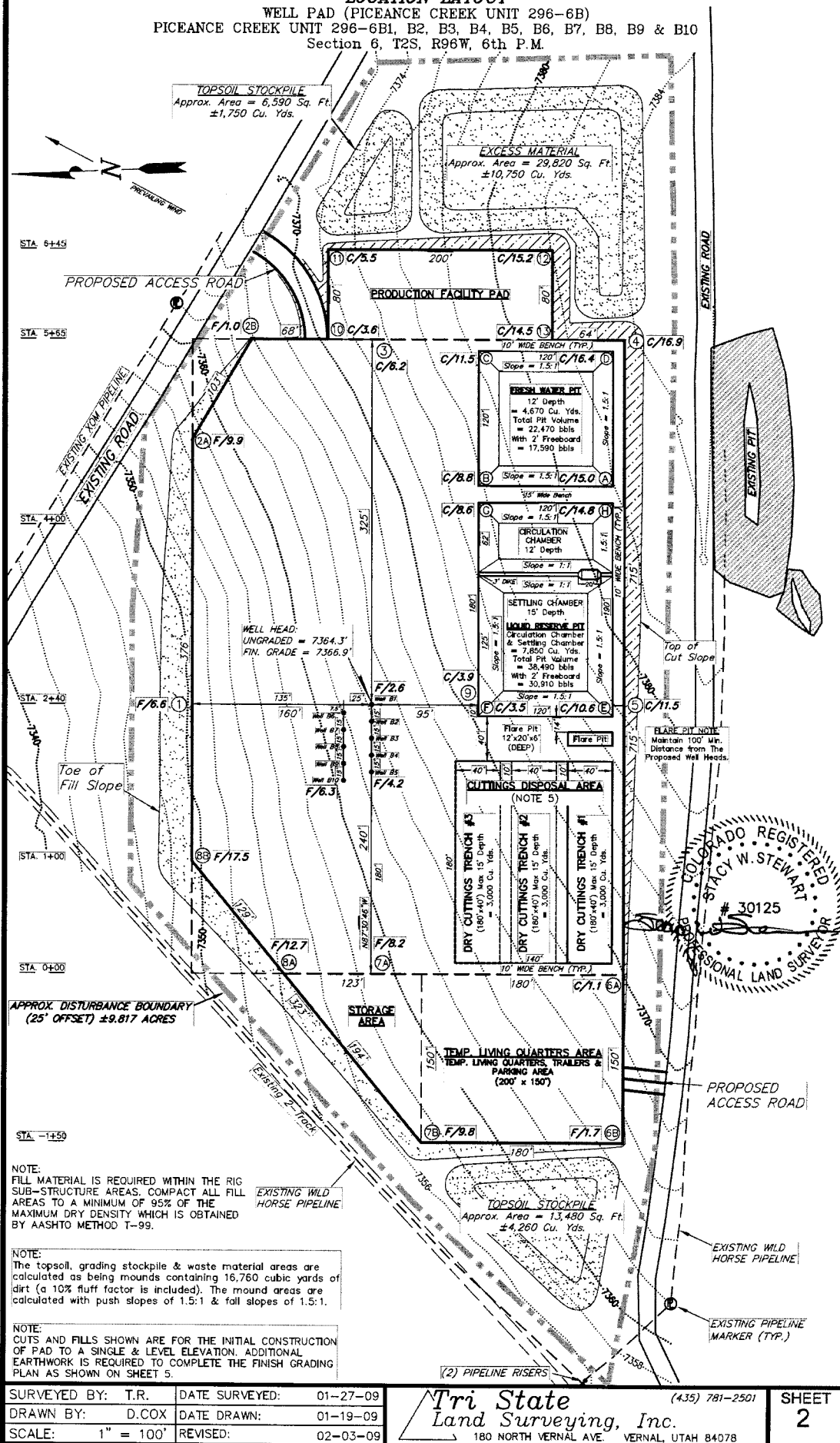


FIGURE #1

WELL PAD (PICEANCE CREEK UNIT 296-6B)
PICEANCE CREEK UNIT 296-6B1, B2, B3, B4, B5, B6, B7, B8, B9 & B10
Section 6, T2S, R96W, 6th P.M.



NOTE:
FILL MATERIAL IS REQUIRED WITHIN THE RIG
SUB-STRUCTURE AREAS. COMPACT ALL FILL
AREAS TO A MINIMUM OF 95% OF THE
MAXIMUM DRY DENSITY WHICH IS OBTAINED
BY AASHTO METHOD T-99.

NOTE:
The topsoil, grading stockpile & waste material areas are calculated as being mounds containing 16,760 cubic yards of dirt (a 10% fluff factor is included). The mound areas are calculated with push slopes of 1.5:1 & fall slopes of 1.5:1.

NOTE:
CUTS AND FILLS SHOWN ARE FOR THE INITIAL CONSTRUCTION
OF PAD TO A SINGLE & LEVEL ELEVATION. ADDITIONAL
EARTHWORK IS REQUIRED TO COMPLETE THE FINISH GRADING
PLAN AS SHOWN ON SHEET 5.

| | |
|-------------------|-------------------------|
| SURVEYED BY: T.R. | DATE SURVEYED: 01-27-09 |
| DRAWN BY: D.COX | DATE DRAWN: 01-19-09 |
| SCALE: 1" = 100' | REVISED: 02-03-09 |

Tri State (435) 781-2501
Land Surveying, Inc.
180 NORTH VERNAL AVE. VERNAL, UTAH 84078

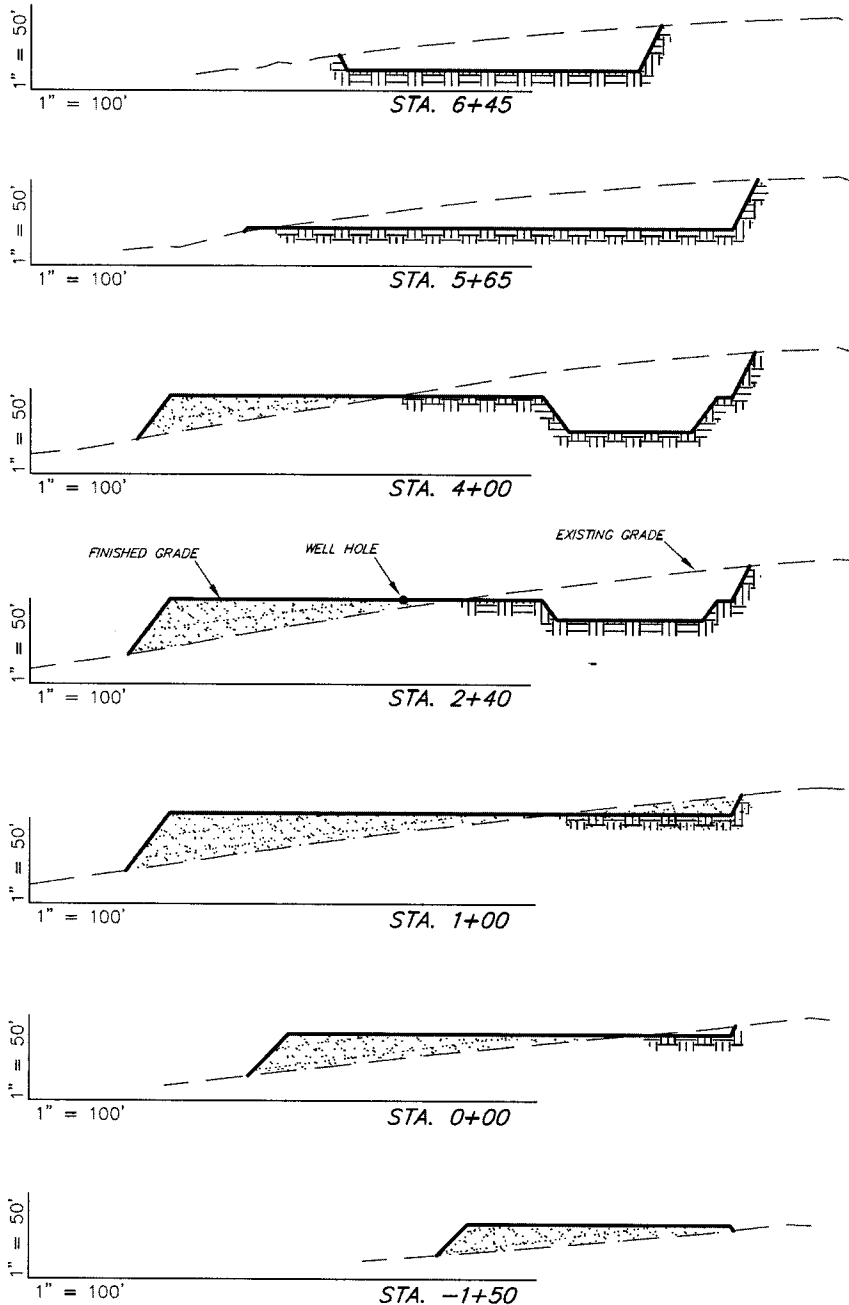
SHEET
2

ExxonMobil Oil Corporation

FIGURE #2

CROSS SECTIONS

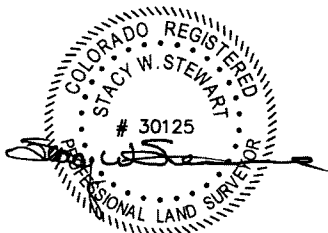
WELL PAD (PICEANCE CREEK UNIT 296-6B)
PICEANCE CREEK UNIT 296-6B1, B2, B3, B4, B5, B6, B7, B8, B9 & B10
Section 6, T2S, R96W, 6th P.M.



* 3,510 CU. YDS. OF MATERIAL IS REQUIRED TO BE EXCAVATED & STOCKPILED TO COMPLETE THE FINISH GRADING PLAN AS SHOWN ON SHEET 5.

ESTIMATED EARTHWORK QUANTITIES (No Shrink or swell adjustments have been used) (Expressed in Cubic Yards)

| ITEM | CUT | FILL | 6" TOPSOIL | EXCESS |
|----------------|--------|--------|------------------------------------|--------|
| FINISH GRADING | 4,060 | 550 | Topsoil is not included in Pad Cut | *3,510 |
| PITS | 12,520 | 0 | | 12,520 |
| PAD | 35,280 | 41,540 | 5,460 | -6,260 |
| TOTALS | 51,860 | 42,090 | 5,460 | 9,770 |



SURVEYED BY: T.R. DATE SURVEYED: 01-27-09
DRAWN BY: D.COX DATE DRAWN: 01-19-09
SCALE: 1" = 100' REVISED: 02-03-09

Tri State
Land Surveying, Inc.
180 NORTH VERNAL AVE. VERNAL, UTAH 84078
(435) 781-2501

SHEET
3