

DALEY LAND SURVEYING, INC.

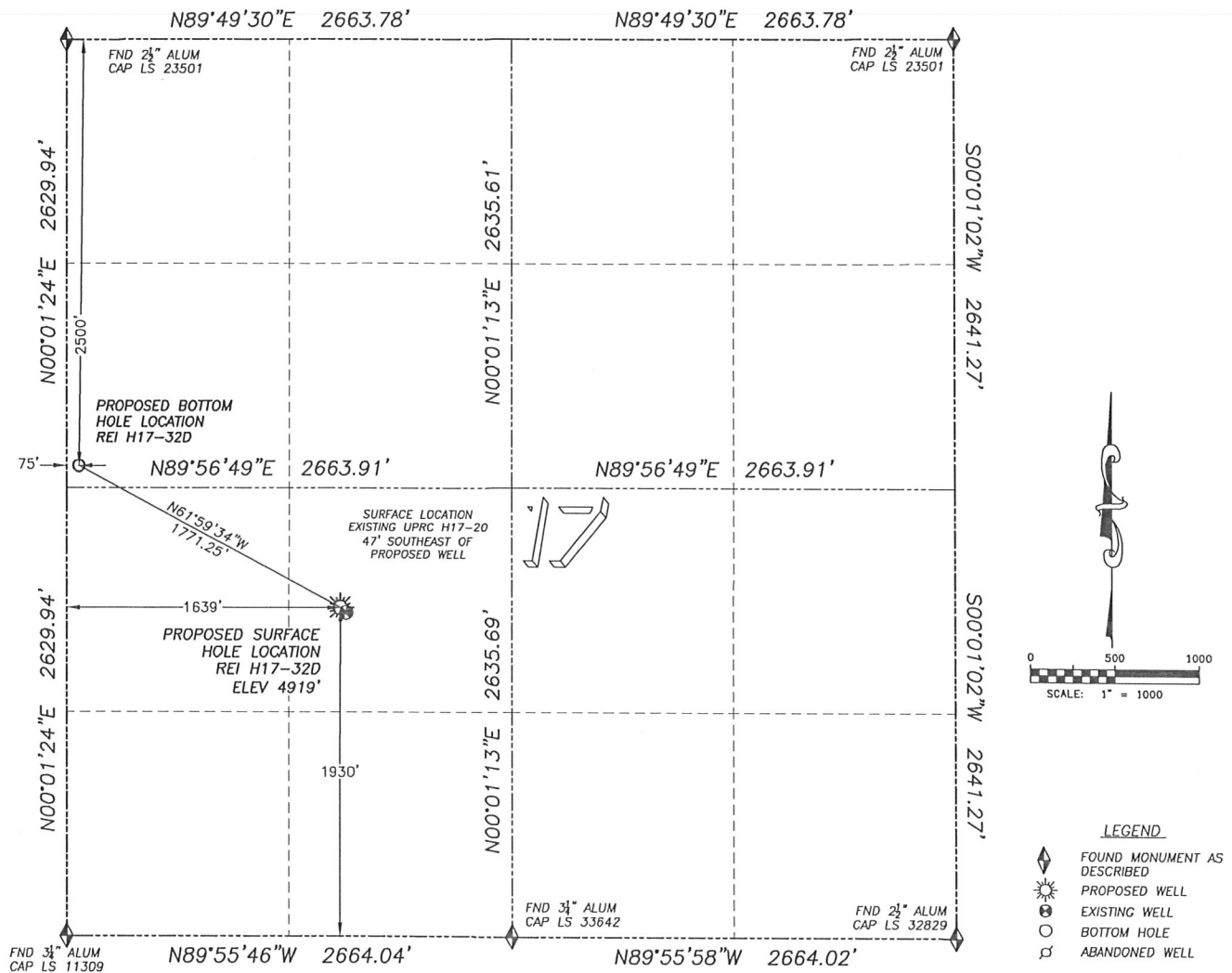
PARKER, CO. 80134

303 953 9841

WELL LOCATION CERTIFICATE

REI H17-32D

SECTION 17, TOWNSHIP 3 NORTH, RANGE 65 WEST OF THE 6TH PRINCIPAL MERIDIAN

**NAD 83 LATITUDE AND LONGITUDE****REI H17-32D SURFACE HOLE:**

LATITUDE: N40.22348°
 LONGITUDE: W104.69096°
 ELEVATION: 4919'
 PDOP 1.6
 1930' FSL, 1639' FWL

BOTTOM HOLE:

LATITUDE: N40.22576°
 LONGITUDE: W104.69656°
 2500' FNL, 75' FWL

NEAREST EXISTING WELL:

UPRC H17-20 SURFACE HOLE
 LATITUDE: N40.22340°
 LONGITUDE: W104.69083°
 ELEVATION: 4918'
 47' SOUTHEAST

QUARTER/QUARTER: NE4/SW4

NEAREST APPARENT PROPERTY LINE:
 1639'± WEST

IN ACCORDANCE WITH A REQUEST FROM SEAN CASPER OF NOBLE ENERGY INC., DALEY LAND SURVEYING, INC. HAS DETERMINED THE SURFACE LOCATION OF THE REI H17-32D WELL TO BE 1930' FSL, 1639' FWL, AS MEASURED AT NINETY (90) DEGREES FROM THE SECTION LINES OF SECTION 17, TOWNSHIP 3 NORTH, RANGE 65 WEST OF THE 6TH PRINCIPAL MERIDIAN, WELD COUNTY COLORADO.

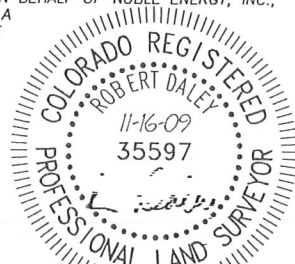
THE BOTTOM HOLE LOCATION PROVIDED BY THE CLIENT IS TO BE 2500' FNL, 75' FWL OF SEC. 17, T.3N, R.65W.

I HEREBY CERTIFY THAT THIS WELL LOCATION CERTIFICATE WAS PREPARED BY ME OR UNDER MY DIRECT SUPERVISION, THAT THE WORK WAS COMPLETED ON 11/13/2009 FOR AND ON BEHALF OF NOBLE ENERGY, INC., AND THAT THIS MAP DOES NOT REPRESENT A BOUNDARY SURVEY, IT IS NOT A LAND SURVEY PLAT OR AN IMPROVEMENT SURVEY PLAT AND IT IS NOT TO BE RELIED UPON FOR THE ESTABLISHMENT OF FENCE, BUILDING OR OTHER FUTURE IMPROVEMENT LINES.

NOTES:

- 1) BASIS OF BEARING FOR THIS MAP IS ASSUMED AND BASED UPON GPS OBSERVATIONS MADE BETWEEN MONUMENTS LOCATED AT THE NORTHWEST AND NORTHEAST CORNERS OF SECTION 17, T.3N., R.65W., AND ALL BEARINGS SHOWN HEREON ARE RELATIVE THERETO.
- 2) HORIZONTAL DATUM IS NAD83.
- 3) VERTICAL DATUM IS NAVD88. ELEVATIONS ARE DERIVED FROM GPS-RTK OBSERVATIONS PROCESSED THROUGH OPUS, UTILIZING THE GEOID03 MODEL.
- 4) SEE VISIBLE IMPROVEMENTS EXHIBIT FOR VISIBLE IMPROVEMENTS WITHIN 400' OF PROPOSED SURFACE HOLE LOCATION
- 5) SURFACE USE: OPEN FIELD

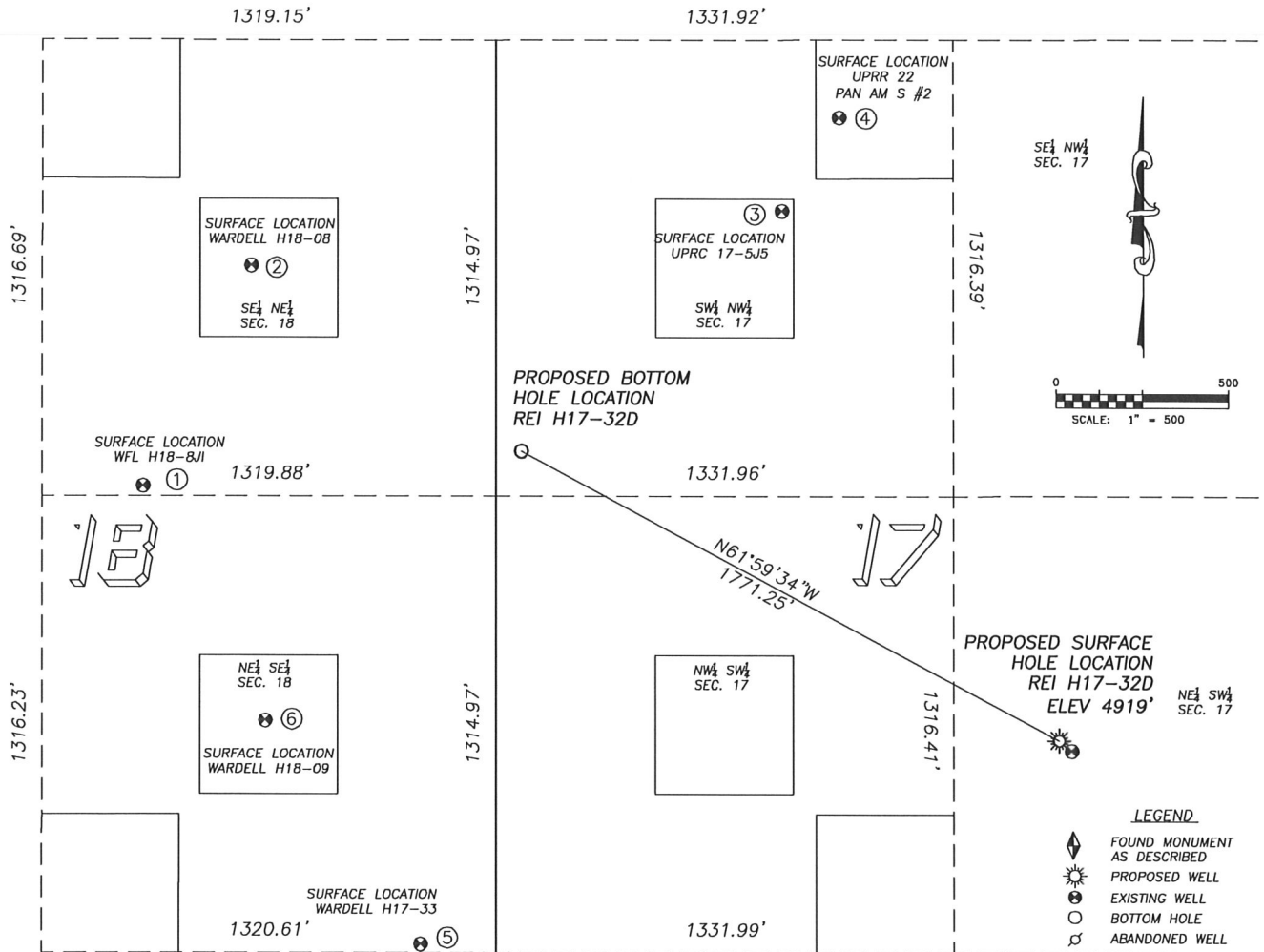
NOTICE: According to Colorado law you MUST commence any legal action based upon any defect in this W.L.C. within three years after you first discover such defect. In no event may any action based upon any such defect in this W.L.C. be commenced more than ten years from the date of the certification shown hereon.



FOR AND ON BEHALF OF
 DALEY LAND SURVEYING, INC.,
 Robert Daley, PLS 35597

SITE SKETCH REI H17-32D

SECTION 17, TOWNSHIP 3 NORTH, RANGE 65 WEST OF THE 6TH PRINCIPAL MERIDIAN



①

WFL H18-8/JI

SE/NE SEC. 18
 2603' FNL, 1025' FEL
 1105' W OF PROPOSED
 BOTTOM HOLE LOCATION
 LAT. N40.22549°
 LONG. W104.70050°
 EL: 4964'
 PDOP 1.1

②

WARDELL H18-08

SE/NE SEC. 18
 1967' FNL, 711' FEL
 951' NW OF PROPOSED
 BOTTOM HOLE LOCATION
 LAT. N40.22723°
 LONG. W104.69937°
 EL: 4944'
 PDOP 2.1

③

UPRC 17-5J5

SW/NW SEC. 17
 1810' FNL, 833' FWL
 1027' NE OF PROPOSED
 BOTTOM HOLE LOCATION
 LAT. N40.22766°
 LONG. W104.69384°
 EL: 4930'
 PDOP 2.3

④

UPRR 22 PAN AM S #2

SW/NW SEC. 17
 1540' FNL, 999' FWL
 1335' NE OF PROPOSED
 BOTTOM HOLE LOCATION
 LAT. N40.22840°
 LONG. W104.69325°
 EL: 4926'
 PDOP 2.3

⑤

WARDELL H17-33

NE/SE SEC. 18
 1340' FSL, 218' FEL
 1450' SW OF PROPOSED
 BOTTOM HOLE LOCATION
 LAT. N40.22187°
 LONG. W104.69761°
 EL: 4940'
 PDOP 1.6

⑥

WARDELL H18-09

NE/SE SEC. 18
 1985' FSL, 670' FEL
 1075' SW OF PROPOSED
 BOTTOM HOLE LOCATION
 LAT. N40.22363°
 LONG. W104.69923°
 EL: 4960'
 PDOP 2.2

NOTES:

- 1) THIS DOES NOT REPRESENT A BOUNDARY SURVEY
- 2) THE LATITUDES AND LONGITUDES SHOWN ARE REFERENCED TO NAD83
- 3) DATUM FOR ELEVATION IS NAVD88. ELEVATIONS ARE DERIVED FROM GPS-RTK OBSERVATIONS PROCESSED THROUGH OPUS, UTILIZING THE GEOID03 MODEL.