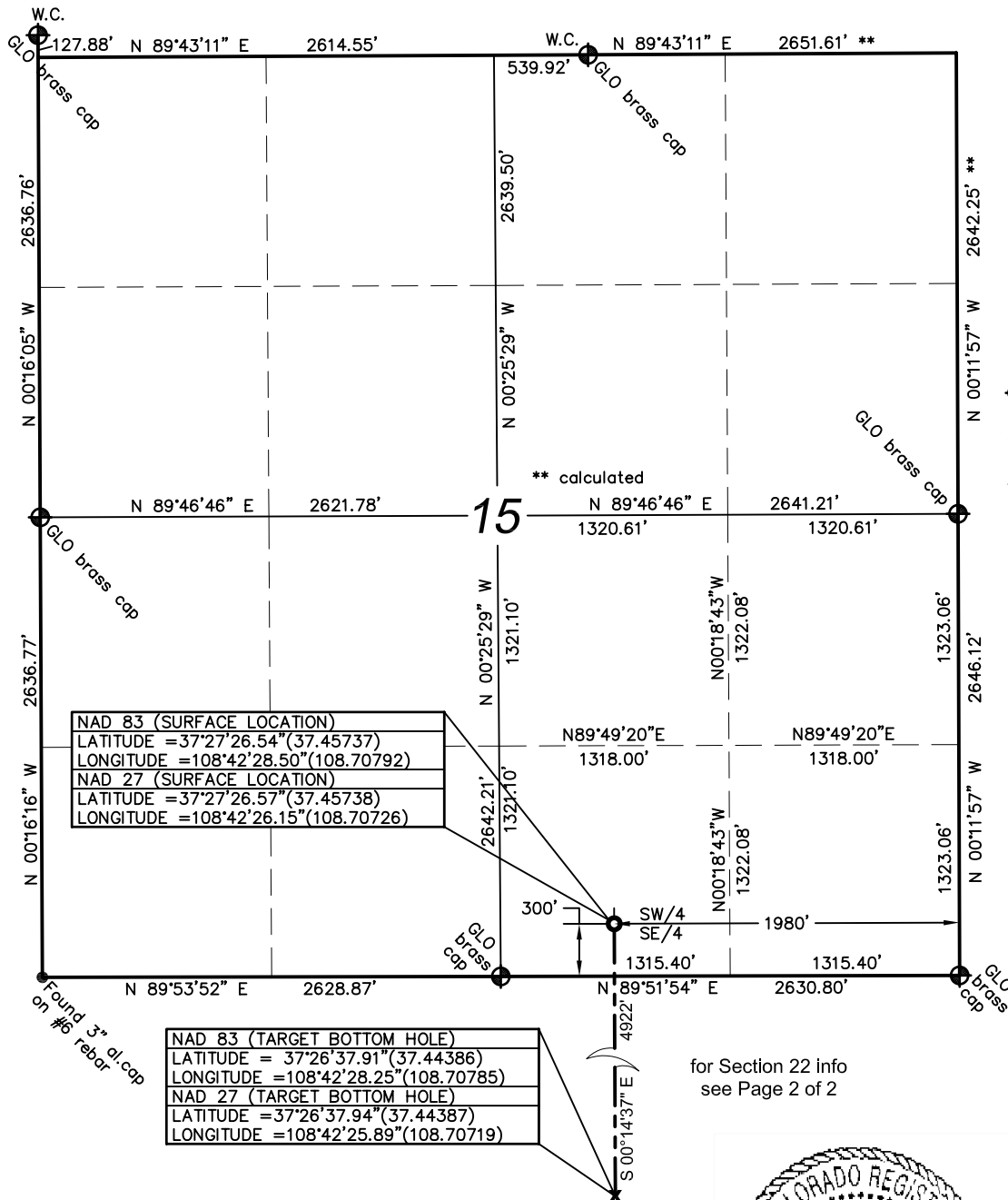


Well Location Plat



- Standard monument
● #6 rebar & aluminum cap
- Bearings from GPS true north
- Lat/Lon from GPS observations PDOP: 1.7
- Nearest Public Road: 310'
- Land use: CRP
- Distances/dimensions are perpendicular to section lines
- Instrument operator: T. Barbee

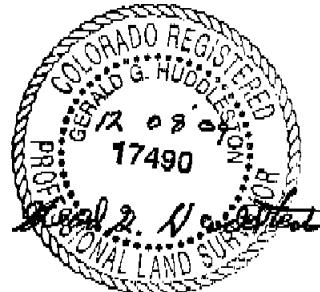
NAD 83 (SURFACE LOCATION)
LATITUDE = 37°27'26.54" (37.45737)
LONGITUDE = 108°42'28.50" (108.70792)
NAD 27 (SURFACE LOCATION)
LATITUDE = 37°27'26.57" (37.45738)
LONGITUDE = 108°42'26.15" (108.70726)

NAD 83 (TARGET BOTTOM HOLE)
LATITUDE = 37°26'37.91" (37.44386)
LONGITUDE = 108°42'28.25" (108.70785)
NAD 27 (TARGET BOTTOM HOLE)
LATITUDE = 37°26'37.94" (37.44387)
LONGITUDE = 108°42'25.89" (108.70719)

Bill Barrett Corporation Chappell 15S-15-37-17

300' FSL & 1980' FEL (surface location)
SW/4 SE/4, Section 15, T37N, R17W, NMPM
Montezuma County, Colorado
6685.6' ground. el. (NAVD88)
660' FSL & 1980' FEL (bottom hole)
SW/4 SE/4, Section 22, T37N, R17W, NMPM
Montezuma County, Colorado

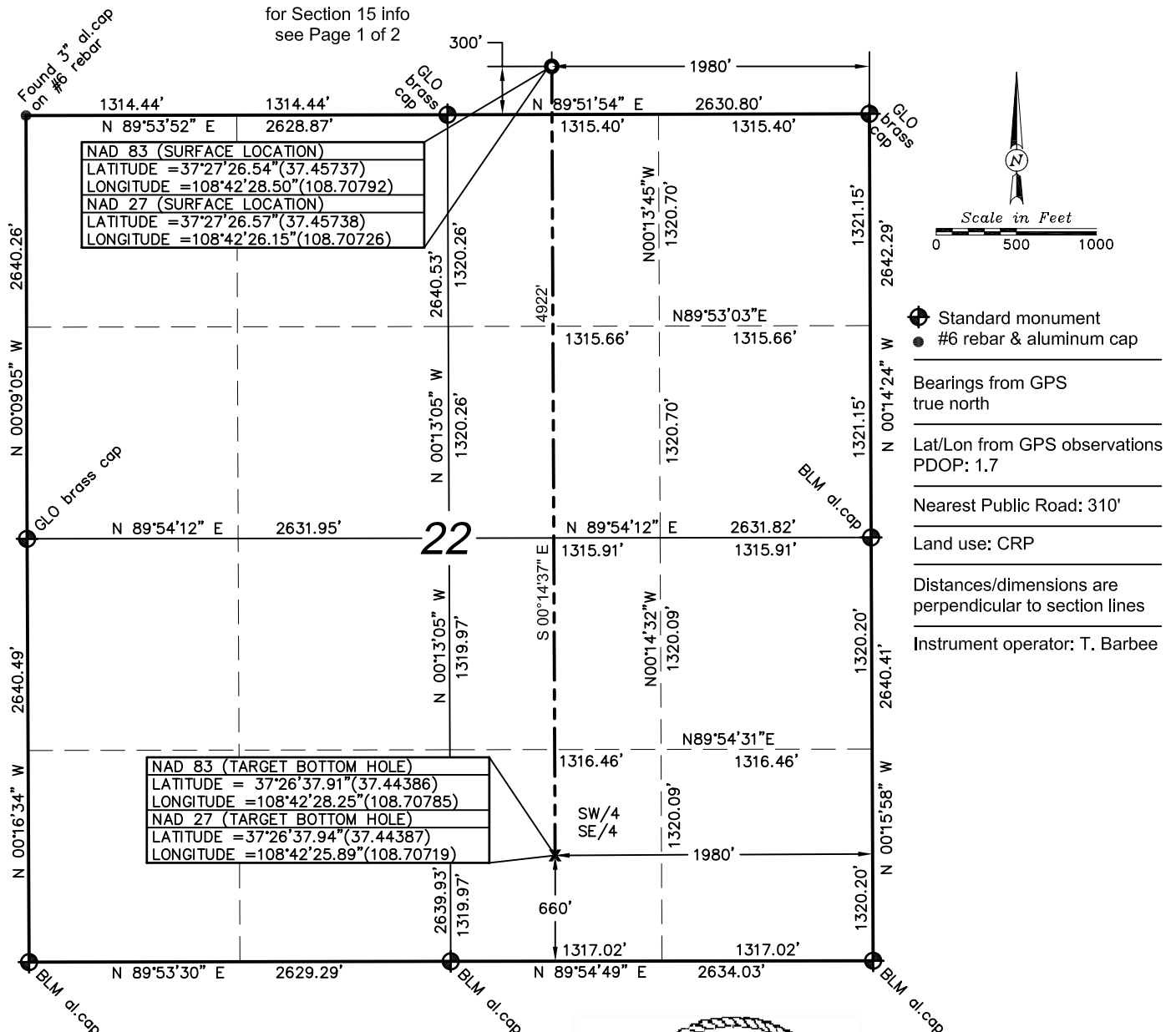
Date of Survey: 12/02/09
Date of Plat: 12/08/09



KNOW ALL MEN BY THESE PRESENTS that I, GERALD G. HUDDLESTON, do hereby certify that this plat was prepared from field notes of an actual survey made by me or under my supervision and that the same is true and accurate to the best of my knowledge and belief.

(BOTTOM HOLE)

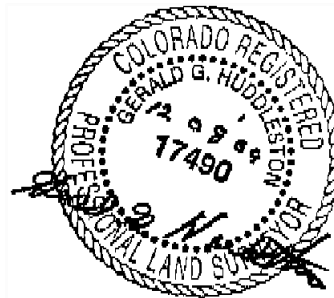
for Section 15 info
see Page 1 of 2



Bill Barrett Corporation
Chappell 15S-15-37-17

300' FSL & 1980' FEL (surface location)
SW/4 SE/4, Section 15, T37N, R17W, NMPM
Montezuma County, Colorado
6685.6' ground. el. (NAVD88)
660' FSL & 1980' FEL (bottom hole)
SW/4 SE/4, Section 22, T37N, R17W, NMPM
Montezuma County, Colorado

Date of Survey: 12/02/09
Date of Plat: 12/08/09



KNOW ALL MEN BY THESE PRESENTS that I, GERALD G. HUDDLESTON, do hereby certify that this plat was prepared from field notes of an actual survey made by me or under my supervision and that the same is true and accurate to the best of my knowledge and belief.



ANDERSON
ENGINEERING COMPANY, INC.
(801) 972-6222
www.andersoneng.com