



Weatherford®

Drilling Services

Proposal



Bill Barrett Corporation

Bill Barrett Corporation
CHAPPELL 15S-15-37-17
MONTEZUMA COUNTY, CO
WELL FILE: PLAN 1
JANUARY 28, 2010

Weatherford International Ltd.

2000 Oil Drive
Casper, Wyoming 82604
+1.307.265.1413 Main
+1.307.235.3958 Fax
www.weatherford.com



Project: MONTEZUMA COUNTY, COLORADO
Site: CHAPPELL 15S-15-37-17
Well: CHAPPELL 15S-15-37-17
Wellbore: CHAPPELL 15S-15-37-17
Design: Design #1
Lat: 37° 27' 26.570 N
Long: 108° 42' 26.150 W
GL: 6685.60
KB: WELL @ 6701.60ft (Original Well Elev)

SECTION DETAILS

MD	Inc	Azi	TVD	+N/-S	+E/-W	DLeg	TFace	VSec	Annotation
0.00	0.00	0.00	0.00	0.00	0.00	0.00	0.00	0.00	
5217.53	0.00	0.00	5217.53	0.00	0.00	0.00	0.00	0.00	Start Build 12.00
5967.54	90.00	179.76	5695.00	-477.46	2.04	12.00	179.76	477.47	Start 4441.07 hold at 5967.54 MD
10408.60	90.00	179.76	5695.00	-4918.49	20.97	0.00	0.00	4918.53	TD at 10408.60

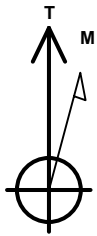
WELL DETAILS: CHAPPELL 15S-15-37-17

Ground Level: 6685.60

+N/-S	+E/-W	Northing	Easting	Latitude	Longitude	Slot
0.00	0.00	303888.14	1069205.62	37° 27' 26.570 N	108° 42' 26.150 W	

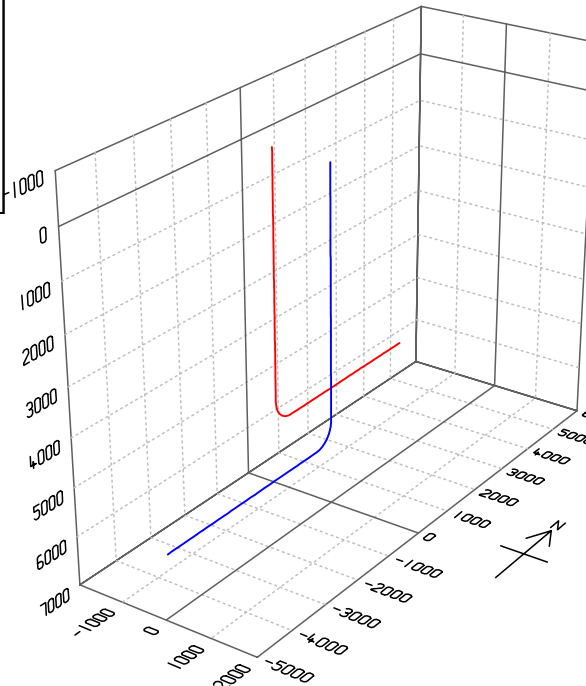
WELLBORE TARGET DETAILS (LAT/LONG)

Name	TVD	+N/-S	+E/-W	Latitude	Longitude	Shape
PBHL CHAPPELL 15S-15-37-17	5695.00	-4918.49	20.97	37° 26' 37.940 N	108° 42' 25.890 W	Point

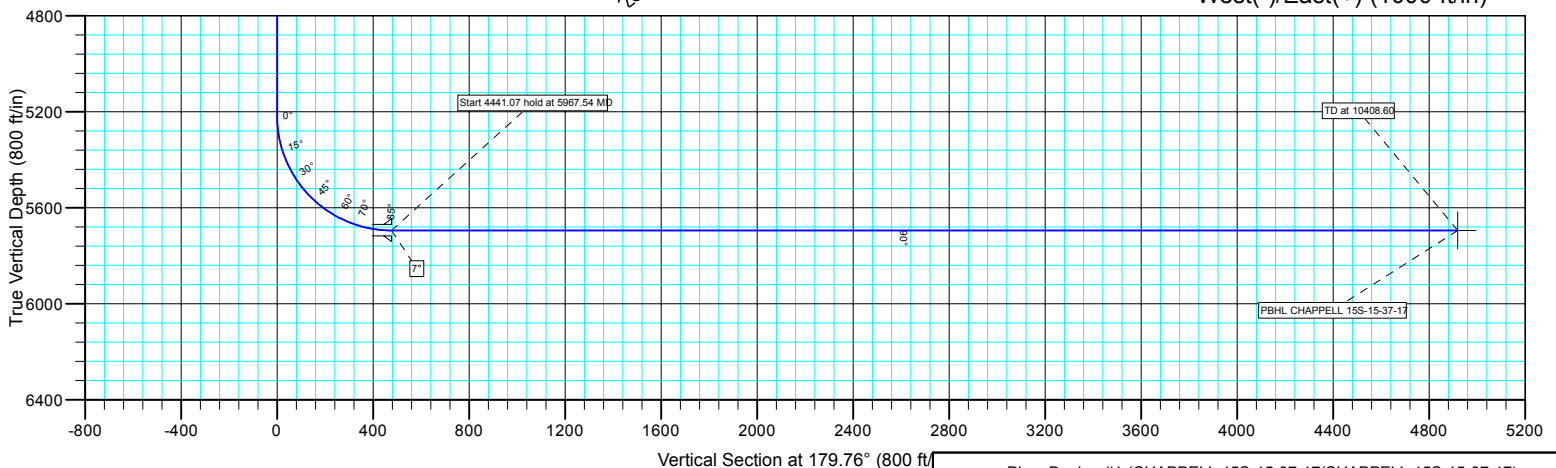
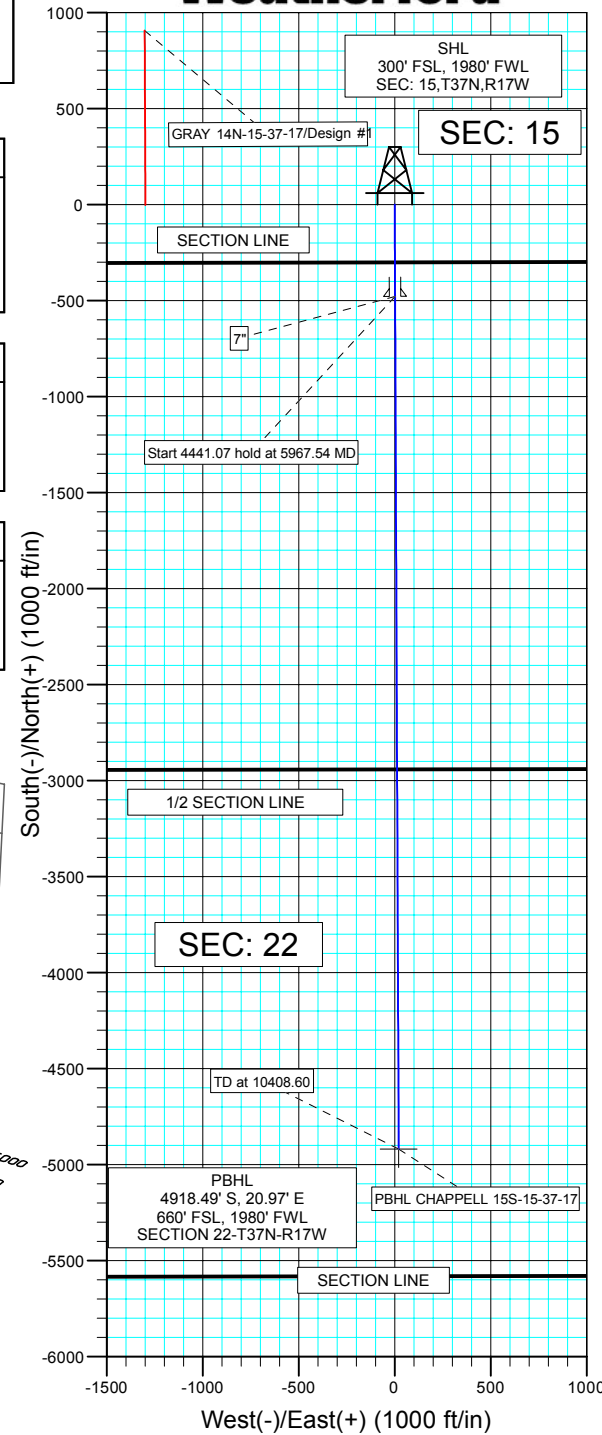


Azimuths to True North
Magnetic North: 10.54°

Magnetic Field
Strength: 51112.9snT
Dip Angle: 63.97°
Date: 1/28/2010
Model: BGGM2009



Weatherford®



Plan: Design #1 (CHAPPELL 15S-15-37-17/CHAPPELL 15S-15-37-17)

Created By: TRACY WILLIAMS Date: 11:47, January 28 2010



Bill Barrett Corporation

BILL BARRETT CORP

MONTEZUMA COUNTY, COLORADO

CHAPPELL 15S-15-37-17

CHAPPELL 15S-15-37-17

CHAPPELL 15S-15-37-17

Plan: Design #1

Standard Planning Report

28 January, 2010



Weatherford®

Database:	EDM 2003.21 Single User Db	Local Co-ordinate Reference:	Well CHAPPELL 15S-15-37-17
Company:	BILL BARRETT CORP	TVD Reference:	WELL @ 6701.60ft (Original Well Elev)
Project:	MONTEZUMA COUNTY, COLORADO	MD Reference:	WELL @ 6701.60ft (Original Well Elev)
Site:	CHAPPELL 15S-15-37-17	North Reference:	True
Well:	CHAPPELL 15S-15-37-17	Survey Calculation Method:	Minimum Curvature
Wellbore:	CHAPPELL 15S-15-37-17		
Design:	Design #1		

Project	MONTEZUMA COUNTY, COLORADO		
Map System:	US State Plane 1927 (Exact solution)	System Datum:	Ground Level
Geo Datum:	NAD 1927 (NADCON CONUS)		
Map Zone:	Colorado South 503		

Site						CHAPPELL 15S-15-37-17											
Site Position:						Northing:			303,888.14 ft			Latitude:			37° 27' 26.570 N		
From:			Lat/Long			Easting:			1,069,205.62 ft			Longitude:			108° 42' 26.150 W		
Position Uncertainty:			0.00 ft			Slot Radius:			"			Grid Convergence:			-1.97 °		

Well	CHAPPELL 15S-15-37-17					
Well Position	+N-S	0.00 ft	Northing:	303,888.14 ft	Latitude:	37° 27' 26.570 N
	+E-W	0.00 ft	Easting:	1,069,205.62 ft	Longitude:	108° 42' 26.150 W
Position Uncertainty		0.00 ft	Wellhead Elevation:	ft	Ground Level:	6,685.60 ft

Wellbore	CHAPPELL 15S-15-37-17				
Magnetics	Model Name	Sample Date	Declination (°)	Dip Angle (°)	Field Strength (nT)
	BGGM2009	1/28/2010	10.54	63.97	51,113

Design	Design #1			
Audit Notes:				
Version:	Phase:	PLAN	Tie On Depth:	0.00
Vertical Section:	Depth From (TVD) (ft)	+N/-S (ft)	+E/-W (ft)	Direction (°)
	0.00	0.00	0.00	179.76

Plan Sections										
Measured Depth (ft)	Inclination (°)	Azimuth (°)	Vertical Depth (ft)	+N/-S (ft)	+E/-W (ft)	Dogleg Rate (°/100ft)	Build Rate (°/100ft)	Turn Rate (°/100ft)	TFO (°)	Target
0.00	0.00	0.00	0.00	0.00	0.00	0.00	0.00	0.00	0.00	
5,217.53	0.00	0.00	5,217.53	0.00	0.00	0.00	0.00	0.00	0.00	
5,967.54	90.00	179.76	5,695.00	-477.46	2.04	12.00	12.00	0.00	179.76	
10,408.60	90.00	179.76	5,695.00	-4,918.49	20.97	0.00	0.00	0.00	0.00	PBHL CHAPPELL

Database:	EDM 2003.21 Single User Db	Local Co-ordinate Reference:	Well CHAPPELL 15S-15-37-17
Company:	BILL BARRETT CORP	TVD Reference:	WELL @ 6701.60ft (Original Well Elev)
Project:	MONTEZUMA COUNTY, COLORADO	MD Reference:	WELL @ 6701.60ft (Original Well Elev)
Site:	CHAPPELL 15S-15-37-17	North Reference:	True
Well:	CHAPPELL 15S-15-37-17	Survey Calculation Method:	Minimum Curvature
Wellbore:	CHAPPELL 15S-15-37-17		
Design:	Design #1		

Planned Survey									
Measured Depth (ft)	Inclination (°)	Azimuth (°)	Vertical Depth (ft)	+N/-S (ft)	+E/-W (ft)	Vertical Section (ft)	Dogleg Rate (°/100ft)	Build Rate (°/100ft)	Turn Rate (°/100ft)
0.00	0.00	0.00	0.00	0.00	0.00	0.00	0.00	0.00	0.00
100.00	0.00	0.00	100.00	0.00	0.00	0.00	0.00	0.00	0.00
200.00	0.00	0.00	200.00	0.00	0.00	0.00	0.00	0.00	0.00
300.00	0.00	0.00	300.00	0.00	0.00	0.00	0.00	0.00	0.00
400.00	0.00	0.00	400.00	0.00	0.00	0.00	0.00	0.00	0.00
500.00	0.00	0.00	500.00	0.00	0.00	0.00	0.00	0.00	0.00
600.00	0.00	0.00	600.00	0.00	0.00	0.00	0.00	0.00	0.00
700.00	0.00	0.00	700.00	0.00	0.00	0.00	0.00	0.00	0.00
800.00	0.00	0.00	800.00	0.00	0.00	0.00	0.00	0.00	0.00
900.00	0.00	0.00	900.00	0.00	0.00	0.00	0.00	0.00	0.00
1,000.00	0.00	0.00	1,000.00	0.00	0.00	0.00	0.00	0.00	0.00
1,100.00	0.00	0.00	1,100.00	0.00	0.00	0.00	0.00	0.00	0.00
1,200.00	0.00	0.00	1,200.00	0.00	0.00	0.00	0.00	0.00	0.00
1,300.00	0.00	0.00	1,300.00	0.00	0.00	0.00	0.00	0.00	0.00
1,400.00	0.00	0.00	1,400.00	0.00	0.00	0.00	0.00	0.00	0.00
1,500.00	0.00	0.00	1,500.00	0.00	0.00	0.00	0.00	0.00	0.00
1,600.00	0.00	0.00	1,600.00	0.00	0.00	0.00	0.00	0.00	0.00
1,700.00	0.00	0.00	1,700.00	0.00	0.00	0.00	0.00	0.00	0.00
1,800.00	0.00	0.00	1,800.00	0.00	0.00	0.00	0.00	0.00	0.00
1,900.00	0.00	0.00	1,900.00	0.00	0.00	0.00	0.00	0.00	0.00
2,000.00	0.00	0.00	2,000.00	0.00	0.00	0.00	0.00	0.00	0.00
2,100.00	0.00	0.00	2,100.00	0.00	0.00	0.00	0.00	0.00	0.00
2,200.00	0.00	0.00	2,200.00	0.00	0.00	0.00	0.00	0.00	0.00
2,300.00	0.00	0.00	2,300.00	0.00	0.00	0.00	0.00	0.00	0.00
2,400.00	0.00	0.00	2,400.00	0.00	0.00	0.00	0.00	0.00	0.00
2,500.00	0.00	0.00	2,500.00	0.00	0.00	0.00	0.00	0.00	0.00
2,600.00	0.00	0.00	2,600.00	0.00	0.00	0.00	0.00	0.00	0.00
2,700.00	0.00	0.00	2,700.00	0.00	0.00	0.00	0.00	0.00	0.00
2,800.00	0.00	0.00	2,800.00	0.00	0.00	0.00	0.00	0.00	0.00
2,900.00	0.00	0.00	2,900.00	0.00	0.00	0.00	0.00	0.00	0.00
3,000.00	0.00	0.00	3,000.00	0.00	0.00	0.00	0.00	0.00	0.00
3,100.00	0.00	0.00	3,100.00	0.00	0.00	0.00	0.00	0.00	0.00
3,200.00	0.00	0.00	3,200.00	0.00	0.00	0.00	0.00	0.00	0.00
3,300.00	0.00	0.00	3,300.00	0.00	0.00	0.00	0.00	0.00	0.00
3,400.00	0.00	0.00	3,400.00	0.00	0.00	0.00	0.00	0.00	0.00
3,500.00	0.00	0.00	3,500.00	0.00	0.00	0.00	0.00	0.00	0.00
3,600.00	0.00	0.00	3,600.00	0.00	0.00	0.00	0.00	0.00	0.00
3,700.00	0.00	0.00	3,700.00	0.00	0.00	0.00	0.00	0.00	0.00
3,800.00	0.00	0.00	3,800.00	0.00	0.00	0.00	0.00	0.00	0.00
3,900.00	0.00	0.00	3,900.00	0.00	0.00	0.00	0.00	0.00	0.00
4,000.00	0.00	0.00	4,000.00	0.00	0.00	0.00	0.00	0.00	0.00
4,100.00	0.00	0.00	4,100.00	0.00	0.00	0.00	0.00	0.00	0.00
4,200.00	0.00	0.00	4,200.00	0.00	0.00	0.00	0.00	0.00	0.00
4,300.00	0.00	0.00	4,300.00	0.00	0.00	0.00	0.00	0.00	0.00
4,400.00	0.00	0.00	4,400.00	0.00	0.00	0.00	0.00	0.00	0.00
4,500.00	0.00	0.00	4,500.00	0.00	0.00	0.00	0.00	0.00	0.00
4,600.00	0.00	0.00	4,600.00	0.00	0.00	0.00	0.00	0.00	0.00
4,700.00	0.00	0.00	4,700.00	0.00	0.00	0.00	0.00	0.00	0.00
4,800.00	0.00	0.00	4,800.00	0.00	0.00	0.00	0.00	0.00	0.00
4,900.00	0.00	0.00	4,900.00	0.00	0.00	0.00	0.00	0.00	0.00
5,000.00	0.00	0.00	5,000.00	0.00	0.00	0.00	0.00	0.00	0.00
5,100.00	0.00	0.00	5,100.00	0.00	0.00	0.00	0.00	0.00	0.00
5,200.00	0.00	0.00	5,200.00	0.00	0.00	0.00	0.00	0.00	0.00
Start Build 12.00									



Database:	EDM 2003.21 Single User Db	Local Co-ordinate Reference:	Well CHAPPELL 15S-15-37-17
Company:	BILL BARRETT CORP	TVD Reference:	WELL @ 6701.60ft (Original Well Elev)
Project:	MONTEZUMA COUNTY, COLORADO	MD Reference:	WELL @ 6701.60ft (Original Well Elev)
Site:	CHAPPELL 15S-15-37-17	North Reference:	True
Well:	CHAPPELL 15S-15-37-17	Survey Calculation Method:	Minimum Curvature
Wellbore:	CHAPPELL 15S-15-37-17		
Design:	Design #1		

Planned Survey

Measured Depth (ft)	Inclination (°)	Azimuth (°)	Vertical Depth (ft)	+N/-S (ft)	+E/-W (ft)	Vertical Section (ft)	Dogleg Rate (°/100ft)	Build Rate (°/100ft)	Turn Rate (°/100ft)
5,217.53	0.00	0.00	5,217.53	0.00	0.00	0.00	0.00	0.00	0.00
5,225.00	0.90	179.76	5,225.00	-0.06	0.00	0.06	12.00	12.00	0.00
5,250.00	3.90	179.76	5,249.97	-1.10	0.00	1.10	12.00	12.00	0.00
5,275.00	6.90	179.76	5,274.86	-3.45	0.01	3.45	12.00	12.00	0.00
5,300.00	9.90	179.76	5,299.59	-7.10	0.03	7.10	12.00	12.00	0.00
5,325.00	12.90	179.76	5,324.09	-12.04	0.05	12.04	12.00	12.00	0.00
5,350.00	15.90	179.76	5,348.31	-18.26	0.08	18.26	12.00	12.00	0.00
5,375.00	18.90	179.76	5,372.16	-25.73	0.11	25.73	12.00	12.00	0.00
5,400.00	21.90	179.76	5,395.59	-34.44	0.15	34.44	12.00	12.00	0.00
5,425.00	24.90	179.76	5,418.53	-44.37	0.19	44.37	12.00	12.00	0.00
5,450.00	27.90	179.76	5,440.92	-55.48	0.24	55.48	12.00	12.00	0.00
5,475.00	30.90	179.76	5,462.70	-67.75	0.29	67.75	12.00	12.00	0.00
5,500.00	33.90	179.76	5,483.81	-81.14	0.35	81.14	12.00	12.00	0.00
5,525.00	36.90	179.76	5,504.19	-95.62	0.41	95.62	12.00	12.00	0.00
5,550.00	39.90	179.76	5,523.78	-111.15	0.47	111.15	12.00	12.00	0.00
5,575.00	42.90	179.76	5,542.53	-127.68	0.54	127.68	12.00	12.00	0.00
5,600.00	45.90	179.76	5,560.39	-145.16	0.62	145.17	12.00	12.00	0.00
5,625.00	48.90	179.76	5,577.31	-163.56	0.70	163.57	12.00	12.00	0.00
5,650.00	51.90	179.76	5,593.25	-182.82	0.78	182.82	12.00	12.00	0.00
5,675.00	54.90	179.76	5,608.15	-202.89	0.86	202.89	12.00	12.00	0.00
5,700.00	57.90	179.76	5,621.99	-223.71	0.95	223.71	12.00	12.00	0.00
5,725.00	60.90	179.76	5,634.71	-245.22	1.05	245.23	12.00	12.00	0.00
5,750.00	63.90	179.76	5,646.30	-267.38	1.14	267.38	12.00	12.00	0.00
5,775.00	66.90	179.76	5,656.70	-290.10	1.24	290.11	12.00	12.00	0.00
5,800.00	69.90	179.76	5,665.91	-313.34	1.34	313.35	12.00	12.00	0.00
5,825.00	72.90	179.76	5,673.88	-337.03	1.44	337.04	12.00	12.00	0.00
5,850.00	75.90	179.76	5,680.61	-361.11	1.54	361.11	12.00	12.00	0.00
5,875.00	78.90	179.76	5,686.06	-385.50	1.64	385.51	12.00	12.00	0.00
5,900.00	81.90	179.76	5,690.23	-410.15	1.75	410.16	12.00	12.00	0.00
5,925.00	84.90	179.76	5,693.11	-434.98	1.85	434.99	12.00	12.00	0.00
5,950.00	87.90	179.76	5,694.68	-459.93	1.96	459.93	12.00	12.00	0.00
Start 4441.07 hold at 5967.54 MD - 7"									
5,967.54	90.00	179.76	5,695.00	-477.47	2.04	477.47	12.00	12.00	0.00
6,000.00	90.00	179.76	5,695.00	-509.93	2.17	509.93	0.00	0.00	0.00
6,100.00	90.00	179.76	5,695.00	-609.92	2.60	609.93	0.00	0.00	0.00
6,200.00	90.00	179.76	5,695.00	-709.92	3.03	709.93	0.00	0.00	0.00
6,300.00	90.00	179.76	5,695.00	-809.92	3.45	809.93	0.00	0.00	0.00
6,400.00	90.00	179.76	5,695.00	-909.92	3.88	909.93	0.00	0.00	0.00
6,500.00	90.00	179.76	5,695.00	-1,009.92	4.31	1,009.93	0.00	0.00	0.00
6,600.00	90.00	179.76	5,695.00	-1,109.92	4.73	1,109.93	0.00	0.00	0.00
6,700.00	90.00	179.76	5,695.00	-1,209.92	5.16	1,209.93	0.00	0.00	0.00
6,800.00	90.00	179.76	5,695.00	-1,309.92	5.58	1,309.93	0.00	0.00	0.00
6,900.00	90.00	179.76	5,695.00	-1,409.92	6.01	1,409.93	0.00	0.00	0.00
7,000.00	90.00	179.76	5,695.00	-1,509.92	6.44	1,509.93	0.00	0.00	0.00
7,100.00	90.00	179.76	5,695.00	-1,609.92	6.86	1,609.93	0.00	0.00	0.00
7,200.00	90.00	179.76	5,695.00	-1,709.91	7.29	1,709.93	0.00	0.00	0.00
7,300.00	90.00	179.76	5,695.00	-1,809.91	7.72	1,809.93	0.00	0.00	0.00
7,400.00	90.00	179.76	5,695.00	-1,909.91	8.14	1,909.93	0.00	0.00	0.00
7,500.00	90.00	179.76	5,695.00	-2,009.91	8.57	2,009.93	0.00	0.00	0.00
7,600.00	90.00	179.76	5,695.00	-2,109.91	8.99	2,109.93	0.00	0.00	0.00
7,700.00	90.00	179.76	5,695.00	-2,209.91	9.42	2,209.93	0.00	0.00	0.00
7,800.00	90.00	179.76	5,695.00	-2,309.91	9.85	2,309.93	0.00	0.00	0.00
7,900.00	90.00	179.76	5,695.00	-2,409.91	10.27	2,409.93	0.00	0.00	0.00

Database:	EDM 2003.21 Single User Db	Local Co-ordinate Reference:	Well CHAPPELL 15S-15-37-17
Company:	BILL BARRETT CORP	TVD Reference:	WELL @ 6701.60ft (Original Well Elev)
Project:	MONTEZUMA COUNTY, COLORADO	MD Reference:	WELL @ 6701.60ft (Original Well Elev)
Site:	CHAPPELL 15S-15-37-17	North Reference:	True
Well:	CHAPPELL 15S-15-37-17	Survey Calculation Method:	Minimum Curvature
Wellbore:	CHAPPELL 15S-15-37-17		
Design:	Design #1		

Planned Survey										
Measured Depth (ft)	Inclination (°)	Azimuth (°)	Vertical Depth (ft)	+N/-S (ft)	+E/-W (ft)	Vertical Section (ft)	Dogleg Rate (°/100ft)	Build Rate (°/100ft)	Turn Rate (°/100ft)	
8,000.00	90.00	179.76	5,695.00	-2,509.91	10.70	2,509.93	0.00	0.00	0.00	
8,100.00	90.00	179.76	5,695.00	-2,609.91	11.13	2,609.93	0.00	0.00	0.00	
8,200.00	90.00	179.76	5,695.00	-2,709.91	11.55	2,709.93	0.00	0.00	0.00	
8,300.00	90.00	179.76	5,695.00	-2,809.90	11.98	2,809.93	0.00	0.00	0.00	
8,400.00	90.00	179.76	5,695.00	-2,909.90	12.41	2,909.93	0.00	0.00	0.00	
8,500.00	90.00	179.76	5,695.00	-3,009.90	12.83	3,009.93	0.00	0.00	0.00	
8,600.00	90.00	179.76	5,695.00	-3,109.90	13.26	3,109.93	0.00	0.00	0.00	
8,700.00	90.00	179.76	5,695.00	-3,209.90	13.68	3,209.93	0.00	0.00	0.00	
8,800.00	90.00	179.76	5,695.00	-3,309.90	14.11	3,309.93	0.00	0.00	0.00	
8,900.00	90.00	179.76	5,695.00	-3,409.90	14.54	3,409.93	0.00	0.00	0.00	
9,000.00	90.00	179.76	5,695.00	-3,509.90	14.96	3,509.93	0.00	0.00	0.00	
9,100.00	90.00	179.76	5,695.00	-3,609.90	15.39	3,609.93	0.00	0.00	0.00	
9,200.00	90.00	179.76	5,695.00	-3,709.90	15.82	3,709.93	0.00	0.00	0.00	
9,300.00	90.00	179.76	5,695.00	-3,809.90	16.24	3,809.93	0.00	0.00	0.00	
9,400.00	90.00	179.76	5,695.00	-3,909.89	16.67	3,909.93	0.00	0.00	0.00	
9,500.00	90.00	179.76	5,695.00	-4,009.89	17.09	4,009.93	0.00	0.00	0.00	
9,600.00	90.00	179.76	5,695.00	-4,109.89	17.52	4,109.93	0.00	0.00	0.00	
9,700.00	90.00	179.76	5,695.00	-4,209.89	17.95	4,209.93	0.00	0.00	0.00	
9,800.00	90.00	179.76	5,695.00	-4,309.89	18.37	4,309.93	0.00	0.00	0.00	
9,900.00	90.00	179.76	5,695.00	-4,409.89	18.80	4,409.93	0.00	0.00	0.00	
10,000.00	90.00	179.76	5,695.00	-4,509.89	19.23	4,509.93	0.00	0.00	0.00	
10,100.00	90.00	179.76	5,695.00	-4,609.89	19.65	4,609.93	0.00	0.00	0.00	
10,200.00	90.00	179.76	5,695.00	-4,709.89	20.08	4,709.93	0.00	0.00	0.00	
10,300.00	90.00	179.76	5,695.00	-4,809.89	20.50	4,809.93	0.00	0.00	0.00	
TD at 10408.60 - PBHL CHAPPELL 15S-15-37-17										
10,408.60	90.00	179.76	5,695.00	-4,918.49	20.97	4,918.53	0.00	0.00	0.00	

Wellbore Targets										
Target Name	Dip Angle (°)	Dip Dir. (°)	TVD (ft)	+N/-S (ft)	+E/-W (ft)	Northing (ft)	Easting (ft)	Latitude	Longitude	
- hit/miss target										
- Shape										
PBHL CHAPPELL 15S-15-37-17	0.00	0.00	5,695.00	-4,918.49	20.97	298,971.84	1,069,057.73	37° 26' 37.940 N	108° 42' 25.890 W	
- plan hits target center										
- Point										

Casing Points					
Measured Depth (ft)	Vertical Depth (ft)	Name	Casing Diameter (")	Hole Diameter (")	
5,967.54	5,695.00	7"	7	7-1/2	

Plan Annotations					
Measured Depth (ft)	Vertical Depth (ft)	+N/-S (ft)	+E/-W (ft)	Comment	
5,217.53	5,217.53	0.00	0.00	Start Build 12.00	
5,967.54	5,695.00	-477.46	2.04	Start 4441.07 hold at 5967.54 MD	
10,408.60	5,695.00	-4,918.49	20.97	TD at 10408.60	