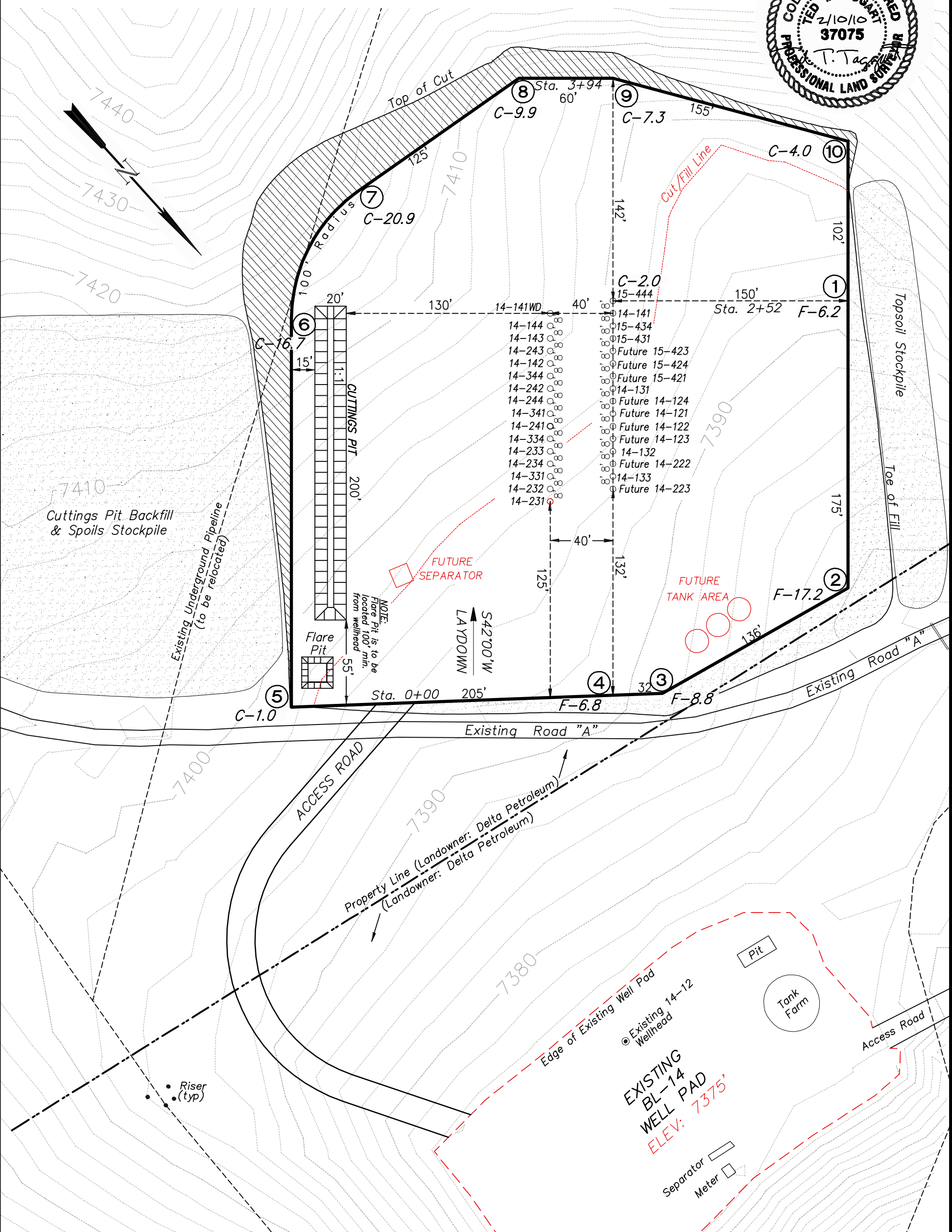
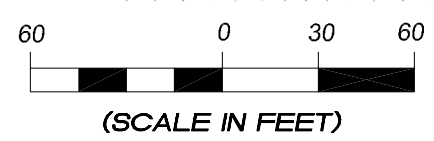


Delta Petroleum Corporation
LOCATION LAYOUT FOR
BCU 14L PAD
 SECTION 14, T9S, R93W, 6th P.M.



NOTES:

Elev. Ungraded Ground At Loc. Stake = 7399.4
 FINISHED GRADE ELEV. AT LOC. STAKE = 7397.4

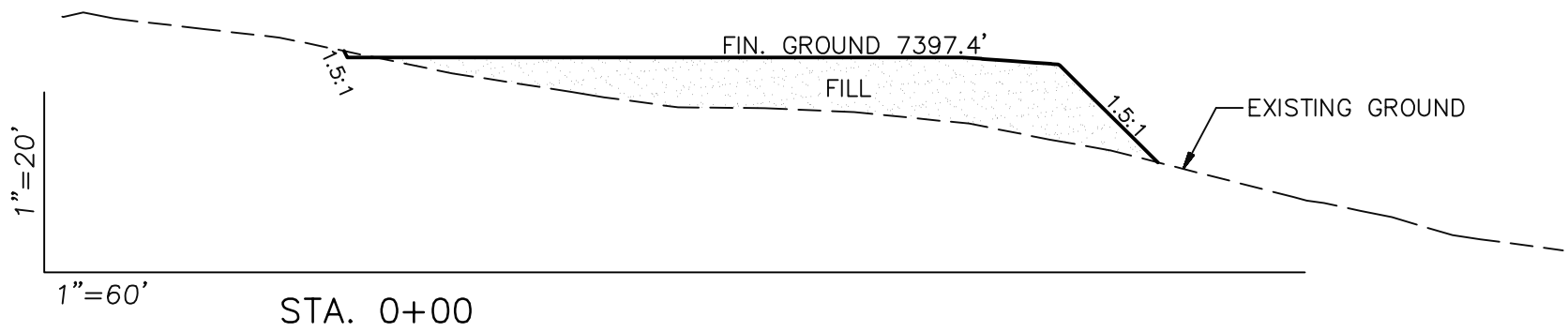
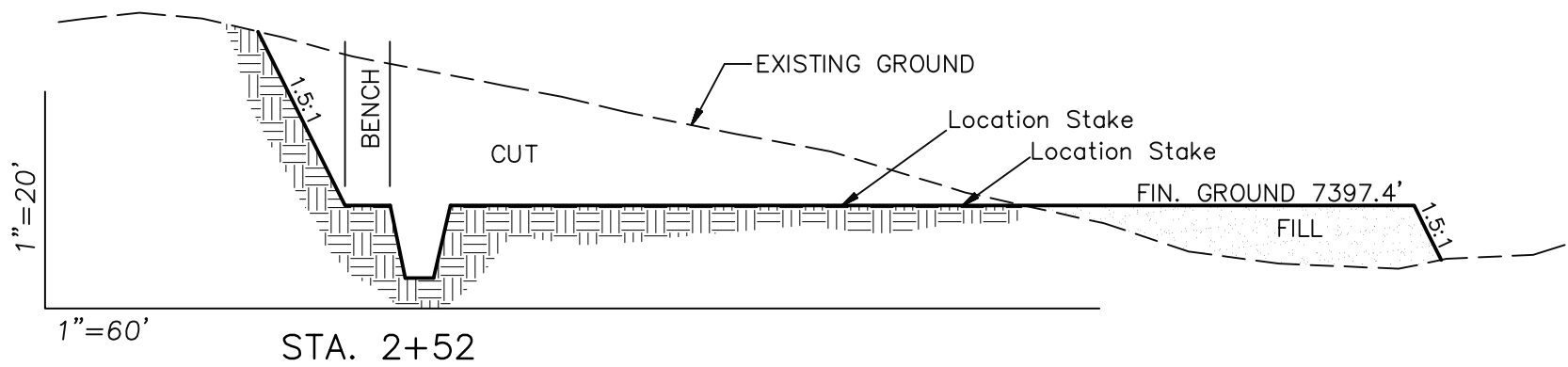
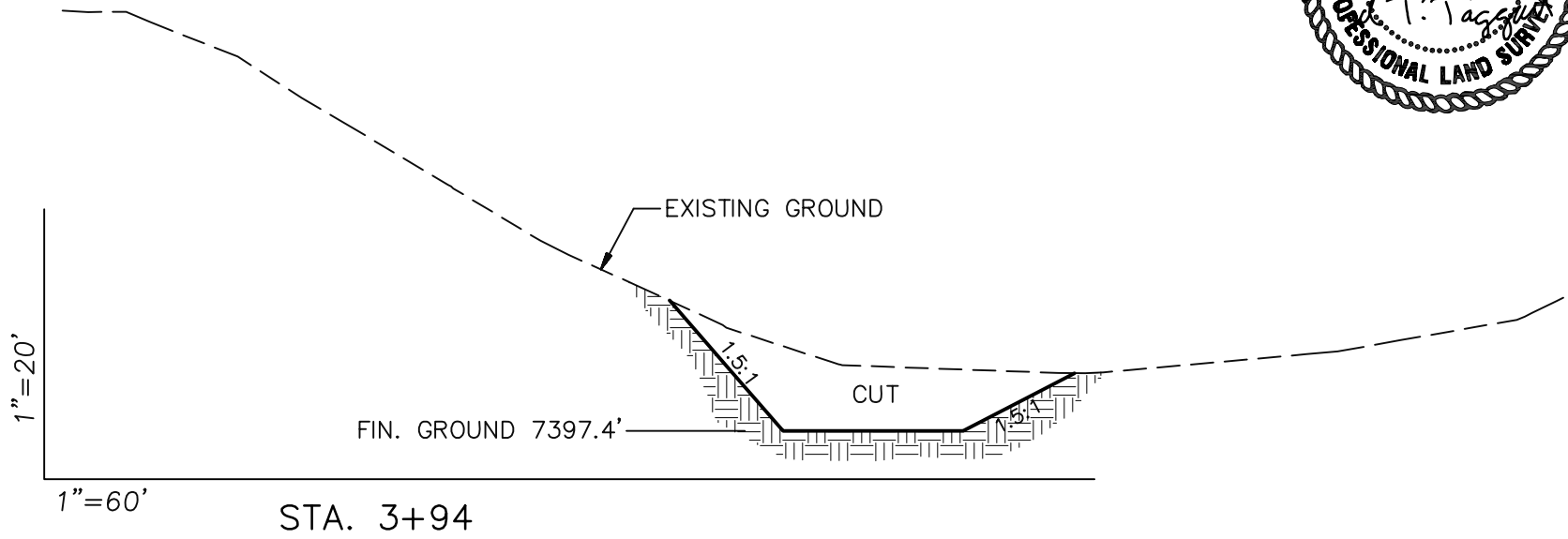


Location Layout		Scale: 1" = 60'	SHEET
Project No.	08-07-04	Date Surveyed:	4/28/08
Date Drawn:	10/16/08	Latest Revision Date:	2/10/10
			6

Delta Petroleum Corporation

LOCATION LAYOUT FOR
BCU 14L PAD

SECTION 14, T9S, R93W, 6th P.M.



APPROXIMATE YARDAGES

CUT	
(6") Topsoil Stripping	= 2741 Cu. Yds.
Remaining Location	= 17,478 Cu. Yds.
TOTAL CUT	= 20,219 CU. YDS.
FILL	= 15,978 CU. YDS.

EXCESS MATERIAL	= 1500 Cu. Yds.
EXCESS UNBALANCE (After Interim Rehabilitation)	= 0 Cu. Yds.

APPROXIMATE ACREAGES

APPROX. WELL DISTURBANCE	= ±5.0 ACRES
ACCESS ROAD DISTURBANCE	= ±0.35 ACRES
TOTAL	= ±5.35 ACRES

NOTE:

ALL CUT AND FILL SLOPES ARE AT 1.5:1 UNLESS OTHERWISE NOTED.



906 Main Street
Evanston, Wyoming 82930
Phone No. (307) 789-4545

<i>Cross Sections</i>	Scale: As Shown	SHEET 7
Project No. 08-07-04	Date Surveyed: 4/28/08	
Date Drawn: 10/16/08	Latest Revision Date: 2/10/10	