



# **US ROCKIES REGION PLANNING**

**COLORADO NORTHERN ZONE - 83**

**WELD\_DRY CREEK PAD 7**

**P\_DRY CREEK 22-27**

**P\_DRY CREEK 22-27**

**Plan: PLAN #1 10-26-09 RHS**

## **Standard Planning Report**

**10 November, 2009**





WELL DETAILS: P_DRY CREEK 22-27							
+N/-S	+E/-W	Northing	Easting	Ground Level:	5008.00	Latitude	Longitude
0.00	0.00	1252968.93	3173145.59	40° 1' 34.068 N		104° 52' 54.192 W	Slot

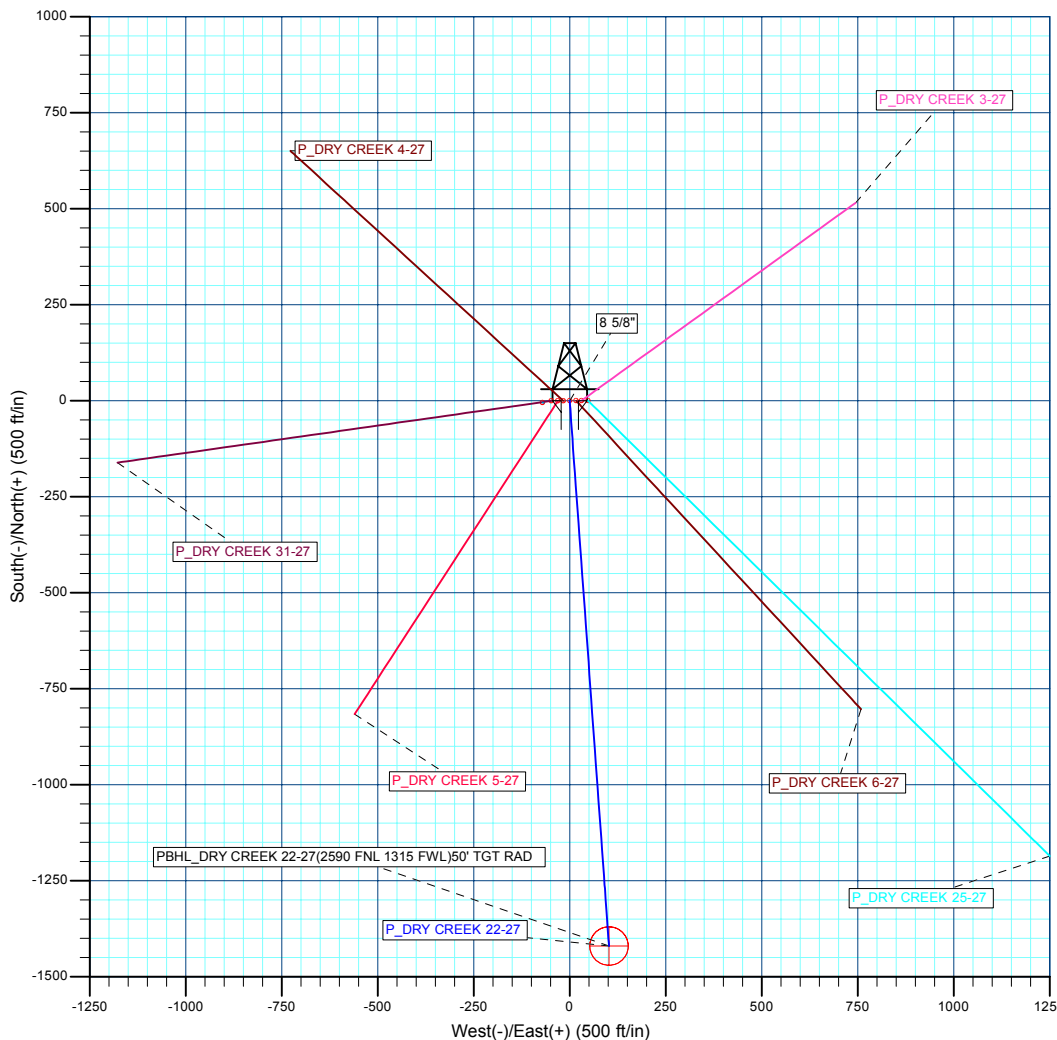
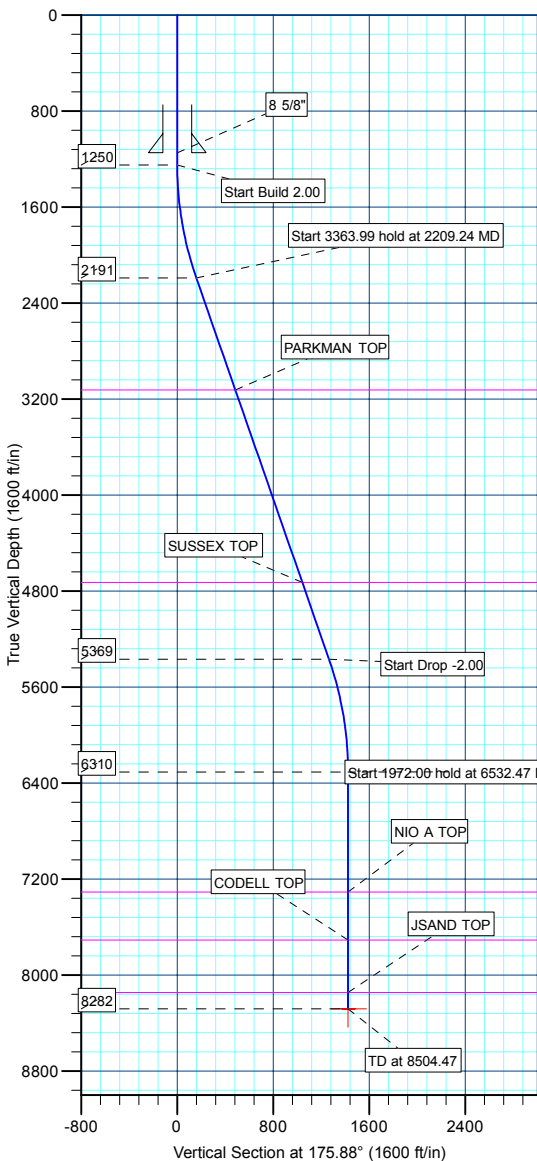
FORMATION TOP DETAILS		
TVDPath	MDPath	Formation
3126.00	3198.78	PARKMAN TOP
4728.00	4894.98	SUSSEX TOP
7310.00	7532.47	NIO A TOP
7710.00	7932.47	CODELL TOP
8147.00	8369.47	JSAND TOP

SECTION DETAILS										
MD	Inc	Azi	TVD	+N/-S	+E/-W	DLeg	TFace	VSec	Target	
0.00	0.00	0.00	0.00	0.00	0.00	0.00	0.00	0.00		
1250.00	0.00	0.00	1250.00	0.00	0.00	0.00	0.00	0.00		
2209.24	19.18	175.88	2191.42	-158.69	11.44	2.00	175.88	159.10		
5573.23	19.18	175.88	5368.58	-1261.29	90.89	0.00	0.00	1264.56		
6532.47	0.00	0.00	6310.00	-1419.98	102.32	2.00	180.00	1423.66		
8504.47	0.00	0.00	8282.00	-1419.98	102.32	0.00	0.00	1423.66		PBHL_DRY CREEK 22-27(2590 FNL 1315 FWL)50' TGT RAD

CASING DETAILS			
TVD	MD	Name	Size
1150.00	1150.00	8 5/8"	8.62



KB ELEV: WELL @ 5023.00ft (Original Well Elev)  
 GRD ELEV: 5008.00



WELLBORE TARGET DETAILS (MAP CO-ORDINATES AND LAT/LONG)									
Name	TVD	+N/-S	+E/-W	Northing	Easting	Latitude	Longitude	Shape	
PBHL	8282.00	-1419.98	102.32	1251548.95	3173247.92	40° 1' 20.028 N	104° 52' 53.004 W	Circle (Radius: 50.00)	

Plan: PLAN #1 10-26-09 RHS (P\_DRY CREEK 22-27/P\_DRY CREEK 22-27)

Created By: Robert H. Scott

<b>Database:</b>	EDM 2003.21 Single User Db	<b>Local Co-ordinate Reference:</b>	Well P_DRY CREEK 22-27
<b>Company:</b>	US ROCKIES REGION PLANNING	<b>TVD Reference:</b>	WELL @ 5023.00ft (Original Well Elev)
<b>Project:</b>	COLORADO NOTHERN ZONE - 83	<b>MD Reference:</b>	WELL @ 5023.00ft (Original Well Elev)
<b>Site:</b>	WELD_DRY CREEK PAD 7	<b>North Reference:</b>	Grid
<b>Well:</b>	P_DRY CREEK 22-27	<b>Survey Calculation Method:</b>	Minimum Curvature
<b>Wellbore:</b>	P_DRY CREEK 22-27		
<b>Design:</b>	PLAN #1 10-26-09 RHS		

<b>Project</b>	COLORADO NOTHERN ZONE - 83, KERR MCGEE OIL & GAS ONSHORE LP		
<b>Map System:</b>	US State Plane 1983	<b>System Datum:</b>	Mean Sea Level
<b>Geo Datum:</b>	North American Datum 1983		
<b>Map Zone:</b>	Colorado Northern Zone		

Site						WELD_DRY CREEK PAD 7, SECTION 27 T1N R67W											
Site Position:						Northing:			1,252,969.16 ft			Latitude:			40° 1' 34.068 N		
From:			Lat/Long			Easting:			3,173,176.40 ft			Longitude:			104° 52' 53.796 W		
Position Uncertainty:			0.00 ft			Slot Radius:			in			Grid Convergence:			0.40 °		

Well	P_DRY CREEK 22-27					
Well Position	+N/-S	-0.23 ft	Northing:	1,252,968.93 ft	Latitude:	40° 1' 34.068 N
	+E/-W	-30.80 ft	Easting:	3,173,145.59 ft	Longitude:	104° 52' 54.192 W
Position Uncertainty		0.00 ft	Wellhead Elevation:	ft	Ground Level:	5,008.00 ft

<b>Wellbore</b>	P_DRY CREEK 22-27				
<b>Magnetics</b>	<b>Model Name</b>	<b>Sample Date</b>	<b>Declination (°)</b>	<b>Dip Angle (°)</b>	<b>Field Strength (nT)</b>
	IGRF200510	10/26/2009	9.08	66.79	53,112

<b>Design</b>	PLAN #1 10-26-09 RHS			
<b>Audit Notes:</b>				
<b>Version:</b>	<b>Phase:</b>	PLAN	<b>Tie On Depth:</b>	0.00
<b>Vertical Section:</b>	<b>Depth From (TVD) (ft)</b>	<b>+N/-S (ft)</b>	<b>+E/-W (ft)</b>	<b>Direction (°)</b>
	0.00	0.00	0.00	175.88

<b>Plan Sections</b>										
Measured Depth (ft)	Inclination (°)	Azimuth (°)	Vertical Depth (ft)	+N/-S (ft)	+E/-W (ft)	Dogleg Rate (°/100ft)	Build Rate (°/100ft)	Turn Rate (°/100ft)	TFO (°)	Target
0.00	0.00	0.00	0.00	0.00	0.00	0.00	0.00	0.00	0.00	
1,250.00	0.00	0.00	1,250.00	0.00	0.00	0.00	0.00	0.00	0.00	
2,209.24	19.18	175.88	2,191.42	-158.69	11.44	2.00	2.00	0.00	175.88	
5,573.23	19.18	175.88	5,368.58	-1,261.29	90.89	0.00	0.00	0.00	0.00	
6,532.47	0.00	0.00	6,310.00	-1,419.98	102.32	2.00	-2.00	0.00	180.00	
8,504.47	0.00	0.00	8,282.00	-1,419.98	102.32	0.00	0.00	0.00	0.00	PBHL_DRY CREEK

<b>Database:</b>	EDM 2003.21 Single User Db	<b>Local Co-ordinate Reference:</b>	Well P_DRY CREEK 22-27
<b>Company:</b>	US ROCKIES REGION PLANNING	<b>TVD Reference:</b>	WELL @ 5023.00ft (Original Well Elev)
<b>Project:</b>	COLORADO NOTHERN ZONE - 83	<b>MD Reference:</b>	WELL @ 5023.00ft (Original Well Elev)
<b>Site:</b>	WELD_DRY CREEK PAD 7	<b>North Reference:</b>	Grid
<b>Well:</b>	P_DRY CREEK 22-27	<b>Survey Calculation Method:</b>	Minimum Curvature
<b>Wellbore:</b>	P_DRY CREEK 22-27		
<b>Design:</b>	PLAN #1 10-26-09 RHS		

Planned Survey									
Measured Depth (ft)	Inclination (°)	Azimuth (°)	Vertical Depth (ft)	+N/-S (ft)	+E/-W (ft)	Vertical Section (ft)	Dogleg Rate (°/100ft)	Build Rate (°/100ft)	Turn Rate (°/100ft)
<b>Start Build 2.00</b>									
1,250.00	0.00	0.00	1,250.00	0.00	0.00	0.00	0.00	0.00	0.00
1,300.00	1.00	175.88	1,300.00	-0.44	0.03	0.44	2.00	2.00	0.00
1,400.00	3.00	175.88	1,399.93	-3.92	0.28	3.93	2.00	2.00	0.00
1,500.00	5.00	175.88	1,499.68	-10.87	0.78	10.90	2.00	2.00	0.00
1,600.00	7.00	175.88	1,599.13	-21.30	1.53	21.35	2.00	2.00	0.00
1,700.00	9.00	175.88	1,698.15	-35.18	2.54	35.27	2.00	2.00	0.00
1,800.00	11.00	175.88	1,796.63	-52.50	3.78	52.63	2.00	2.00	0.00
1,900.00	13.00	175.88	1,894.44	-73.23	5.28	73.42	2.00	2.00	0.00
2,000.00	15.00	175.88	1,991.46	-97.36	7.02	97.62	2.00	2.00	0.00
2,100.00	17.00	175.88	2,087.58	-124.85	9.00	125.18	2.00	2.00	0.00
2,200.00	19.00	175.88	2,182.68	-155.67	11.22	156.08	2.00	2.00	0.00
<b>Start 3363.99 hold at 2209.24 MD</b>									
2,209.24	19.18	175.88	2,191.42	-158.69	11.44	159.10	2.00	2.00	0.00
2,300.00	19.18	175.88	2,277.14	-188.44	13.58	188.93	0.00	0.00	0.00
2,400.00	19.18	175.88	2,371.58	-221.21	15.94	221.79	0.00	0.00	0.00
2,500.00	19.18	175.88	2,466.03	-253.99	18.30	254.65	0.00	0.00	0.00
2,600.00	19.18	175.88	2,560.47	-286.77	20.66	287.51	0.00	0.00	0.00
2,700.00	19.18	175.88	2,654.92	-319.54	23.03	320.37	0.00	0.00	0.00
2,800.00	19.18	175.88	2,749.37	-352.32	25.39	353.23	0.00	0.00	0.00
2,900.00	19.18	175.88	2,843.81	-385.10	27.75	386.10	0.00	0.00	0.00
3,000.00	19.18	175.88	2,938.26	-417.87	30.11	418.96	0.00	0.00	0.00
3,100.00	19.18	175.88	3,032.71	-450.65	32.47	451.82	0.00	0.00	0.00
<b>PARKMAN TOP</b>									
3,198.78	19.18	175.88	3,126.00	-483.03	34.81	484.28	0.00	0.00	0.00
3,200.00	19.18	175.88	3,127.15	-483.43	34.84	484.68	0.00	0.00	0.00
3,300.00	19.18	175.88	3,221.60	-516.20	37.20	517.54	0.00	0.00	0.00
3,400.00	19.18	175.88	3,316.04	-548.98	39.56	550.40	0.00	0.00	0.00
3,500.00	19.18	175.88	3,410.49	-581.76	41.92	583.27	0.00	0.00	0.00
3,600.00	19.18	175.88	3,504.94	-614.53	44.28	616.13	0.00	0.00	0.00
3,700.00	19.18	175.88	3,599.38	-647.31	46.65	648.99	0.00	0.00	0.00
3,800.00	19.18	175.88	3,693.83	-680.09	49.01	681.85	0.00	0.00	0.00
3,900.00	19.18	175.88	3,788.28	-712.86	51.37	714.71	0.00	0.00	0.00
4,000.00	19.18	175.88	3,882.72	-745.64	53.73	747.57	0.00	0.00	0.00
4,100.00	19.18	175.88	3,977.17	-778.42	56.09	780.44	0.00	0.00	0.00
4,200.00	19.18	175.88	4,071.62	-811.19	58.45	813.30	0.00	0.00	0.00
4,300.00	19.18	175.88	4,166.06	-843.97	60.82	846.16	0.00	0.00	0.00
4,400.00	19.18	175.88	4,260.51	-876.75	63.18	879.02	0.00	0.00	0.00
4,500.00	19.18	175.88	4,354.95	-909.52	65.54	911.88	0.00	0.00	0.00
4,600.00	19.18	175.88	4,449.40	-942.30	67.90	944.74	0.00	0.00	0.00
4,700.00	19.18	175.88	4,543.85	-975.08	70.26	977.61	0.00	0.00	0.00
4,800.00	19.18	175.88	4,638.29	-1,007.85	72.63	1,010.47	0.00	0.00	0.00
<b>SUSSEX TOP</b>									
4,894.98	19.18	175.88	4,728.00	-1,038.99	74.87	1,041.68	0.00	0.00	0.00
4,900.00	19.18	175.88	4,732.74	-1,040.63	74.99	1,043.33	0.00	0.00	0.00
5,000.00	19.18	175.88	4,827.19	-1,073.41	77.35	1,076.19	0.00	0.00	0.00
5,100.00	19.18	175.88	4,921.63	-1,106.18	79.71	1,109.05	0.00	0.00	0.00
5,200.00	19.18	175.88	5,016.08	-1,138.96	82.07	1,141.91	0.00	0.00	0.00
5,300.00	19.18	175.88	5,110.53	-1,171.74	84.44	1,174.78	0.00	0.00	0.00
5,400.00	19.18	175.88	5,204.97	-1,204.51	86.80	1,207.64	0.00	0.00	0.00
5,500.00	19.18	175.88	5,299.42	-1,237.29	89.16	1,240.50	0.00	0.00	0.00
<b>Start Drop -2.00</b>									
5,573.23	19.18	175.88	5,368.58	-1,261.29	90.89	1,264.56	0.00	0.00	0.00

<b>Database:</b>	EDM 2003.21 Single User Db	<b>Local Co-ordinate Reference:</b>	Well P_DRY CREEK 22-27
<b>Company:</b>	US ROCKIES REGION PLANNING	<b>TVD Reference:</b>	WELL @ 5023.00ft (Original Well Elev)
<b>Project:</b>	COLORADO NOTHERN ZONE - 83	<b>MD Reference:</b>	WELL @ 5023.00ft (Original Well Elev)
<b>Site:</b>	WELD_DRY CREEK PAD 7	<b>North Reference:</b>	Grid
<b>Well:</b>	P_DRY CREEK 22-27	<b>Survey Calculation Method:</b>	Minimum Curvature
<b>Wellbore:</b>	P_DRY CREEK 22-27		
<b>Design:</b>	PLAN #1 10-26-09 RHS		

Planned Survey									
Measured Depth (ft)	Inclination (°)	Azimuth (°)	Vertical Depth (ft)	+N/-S (ft)	+E/-W (ft)	Vertical Section (ft)	Dogleg Rate (°/100ft)	Build Rate (°/100ft)	Turn Rate (°/100ft)
5,600.00	18.65	175.88	5,393.91	-1,269.95	91.51	1,273.24	2.00	-2.00	0.00
5,700.00	16.65	175.88	5,489.19	-1,300.19	93.69	1,303.56	2.00	-2.00	0.00
5,800.00	14.65	175.88	5,585.48	-1,327.09	95.63	1,330.53	2.00	-2.00	0.00
5,900.00	12.65	175.88	5,682.65	-1,350.63	97.33	1,354.13	2.00	-2.00	0.00
6,000.00	10.65	175.88	5,780.59	-1,370.77	98.78	1,374.32	2.00	-2.00	0.00
6,100.00	8.65	175.88	5,879.17	-1,387.49	99.98	1,391.08	2.00	-2.00	0.00
6,200.00	6.65	175.88	5,978.27	-1,400.76	100.94	1,404.39	2.00	-2.00	0.00
6,300.00	4.65	175.88	6,077.78	-1,410.58	101.65	1,414.24	2.00	-2.00	0.00
6,400.00	2.65	175.88	6,177.57	-1,416.93	102.10	1,420.60	2.00	-2.00	0.00
6,500.00	0.65	175.88	6,277.53	-1,419.80	102.31	1,423.48	2.00	-2.00	0.00
Start 1972.00 hold at 6532.47 MD									
6,532.47	0.00	0.00	6,310.00	-1,419.98	102.32	1,423.66	2.00	-2.00	0.00
6,600.00	0.00	0.00	6,377.53	-1,419.98	102.32	1,423.66	0.00	0.00	0.00
6,700.00	0.00	0.00	6,477.53	-1,419.98	102.32	1,423.66	0.00	0.00	0.00
6,800.00	0.00	0.00	6,577.53	-1,419.98	102.32	1,423.66	0.00	0.00	0.00
6,900.00	0.00	0.00	6,677.53	-1,419.98	102.32	1,423.66	0.00	0.00	0.00
7,000.00	0.00	0.00	6,777.53	-1,419.98	102.32	1,423.66	0.00	0.00	0.00
7,100.00	0.00	0.00	6,877.53	-1,419.98	102.32	1,423.66	0.00	0.00	0.00
7,200.00	0.00	0.00	6,977.53	-1,419.98	102.32	1,423.66	0.00	0.00	0.00
7,300.00	0.00	0.00	7,077.53	-1,419.98	102.32	1,423.66	0.00	0.00	0.00
7,400.00	0.00	0.00	7,177.53	-1,419.98	102.32	1,423.66	0.00	0.00	0.00
7,500.00	0.00	0.00	7,277.53	-1,419.98	102.32	1,423.66	0.00	0.00	0.00
NIO A TOP									
7,532.47	0.00	0.00	7,310.00	-1,419.98	102.32	1,423.66	0.00	0.00	0.00
7,600.00	0.00	0.00	7,377.53	-1,419.98	102.32	1,423.66	0.00	0.00	0.00
7,700.00	0.00	0.00	7,477.53	-1,419.98	102.32	1,423.66	0.00	0.00	0.00
7,800.00	0.00	0.00	7,577.53	-1,419.98	102.32	1,423.66	0.00	0.00	0.00
7,900.00	0.00	0.00	7,677.53	-1,419.98	102.32	1,423.66	0.00	0.00	0.00
CODELL TOP									
7,932.47	0.00	0.00	7,710.00	-1,419.98	102.32	1,423.66	0.00	0.00	0.00
8,000.00	0.00	0.00	7,777.53	-1,419.98	102.32	1,423.66	0.00	0.00	0.00
8,100.00	0.00	0.00	7,877.53	-1,419.98	102.32	1,423.66	0.00	0.00	0.00
8,200.00	0.00	0.00	7,977.53	-1,419.98	102.32	1,423.66	0.00	0.00	0.00
8,300.00	0.00	0.00	8,077.53	-1,419.98	102.32	1,423.66	0.00	0.00	0.00
JSAND TOP									
8,369.47	0.00	0.00	8,147.00	-1,419.98	102.32	1,423.66	0.00	0.00	0.00
8,400.00	0.00	0.00	8,177.53	-1,419.98	102.32	1,423.66	0.00	0.00	0.00
8,500.00	0.00	0.00	8,277.53	-1,419.98	102.32	1,423.66	0.00	0.00	0.00
TD at 8504.47 - PBHL_DRY CREEK 22-27(2590 FNL 1315 FWL)50' TGT RAD									
8,504.47	0.00	0.00	8,282.00	-1,419.98	102.32	1,423.66	0.00	0.00	0.00

Design Targets									
Target Name	Dip Angle (°)	Dip Dir. (°)	TVD (ft)	+N/-S (ft)	+E/-W (ft)	Northing (ft)	Easting (ft)	Latitude	Longitude
- hit/miss target									
- Shape									
PBHL_DRY CREEK 2	0.00	0.00	8,282.00	-1,419.98	102.32	1,251,548.95	3,173,247.92	40° 1' 20.028 N	104° 52' 53.004 W
- plan hits target center									
- Circle (radius 50.00)									

<b>Database:</b>	EDM 2003.21 Single User Db	<b>Local Co-ordinate Reference:</b>	Well P_DRY CREEK 22-27
<b>Company:</b>	US ROCKIES REGION PLANNING	<b>TVD Reference:</b>	WELL @ 5023.00ft (Original Well Elev)
<b>Project:</b>	COLORADO NOTHERN ZONE - 83	<b>MD Reference:</b>	WELL @ 5023.00ft (Original Well Elev)
<b>Site:</b>	WELD_DRY CREEK PAD 7	<b>North Reference:</b>	Grid
<b>Well:</b>	P_DRY CREEK 22-27	<b>Survey Calculation Method:</b>	Minimum Curvature
<b>Wellbore:</b>	P_DRY CREEK 22-27		
<b>Design:</b>	PLAN #1 10-26-09 RHS		

Casing Points					
Measured Depth (ft)	Vertical Depth (ft)	Name	Casing Diameter (in)	Hole Diameter (in)	
1,150.00	1,150.00	8 5/8"	8.62	11.00	

Formations						
Measured Depth (ft)	Vertical Depth (ft)	Name	Lithology	Dip (°)	Dip Direction (°)	
3,198.78	3,126.00	PARKMAN TOP				
4,894.98	4,728.00	SUSSEX TOP				
7,532.47	7,310.00	NIO A TOP				
7,932.47	7,710.00	CODELL TOP				
8,369.47	8,147.00	JSAND TOP				

Plan Annotations					
Measured Depth (ft)	Vertical Depth (ft)	Local Coordinates			
		+N/-S (ft)	+E/-W (ft)	Comment	
1,250.00	1,250.00	0.00	0.00	Start Build 2.00	
2,209.24	2,191.42	-158.69	11.44	Start 3363.99 hold at 2209.24 MD	
5,573.23	5,368.58	-1,261.29	90.89	Start Drop -2.00	
6,532.47	6,310.00	-1,419.98	102.32	Start 1972.00 hold at 6532.47 MD	
8,504.47	8,282.00	-1,419.98	102.32	TD at 8504.47	



# **US ROCKIES REGION PLANNING**

**COLORADO NOTHERN ZONE - 83  
WELD\_DRY CREEK PAD 7  
P\_DRY CREEK 22-27**

**P\_DRY CREEK 22-27  
PLAN #1 10-26-09 RHS**

## **Anticollision Report**

**10 November, 2009**



<b>Company:</b>	US ROCKIES REGION PLANNING	<b>Local Co-ordinate Reference:</b>	Well P_DRY CREEK 22-27
<b>Project:</b>	COLORADO NOTHERN ZONE - 83	<b>TVD Reference:</b>	WELL @ 5023.00ft (Original Well Elev)
<b>Reference Site:</b>	WELD_DRY CREEK PAD 7	<b>MD Reference:</b>	WELL @ 5023.00ft (Original Well Elev)
<b>Site Error:</b>	0.00ft	<b>North Reference:</b>	Grid
<b>Reference Well:</b>	P_DRY CREEK 22-27	<b>Survey Calculation Method:</b>	Minimum Curvature
<b>Well Error:</b>	0.00ft	<b>Output errors are at</b>	2.00 sigma
<b>Reference Wellbore</b>	P_DRY CREEK 22-27	<b>Database:</b>	EDM 2003.21 Single User Db
<b>Reference Design:</b>	PLAN #1 10-26-09 RHS	<b>Offset TVD Reference:</b>	Offset Datum

<b>Reference</b>	PLAN #1 10-26-09 RHS		
<b>Filter type:</b>	NO GLOBAL FILTER: Using user defined selection & filtering criteria		
<b>Interpolation Method:</b>	Stations	<b>Error Model:</b>	ISCWSA
<b>Depth Range:</b>	0.00 to 20,000.00ft	<b>Scan Method:</b>	Closest Approach 3D
<b>Results Limited by:</b>	Maximum center-center distance of 10,000.00ft	<b>Error Surface:</b>	Elliptical Conic
<b>Warning Levels Evaluated at:</b>	2.00 Sigma		

<b>Survey Tool Program</b>	<b>Date</b>	11/10/2009		
<b>From (ft)</b>	<b>To (ft)</b>	<b>Survey (Wellbore)</b>	<b>Tool Name</b>	<b>Description</b>
0.00	8,504.47	PLAN #1 10-26-09 RHS (P_DRY CREEK	MWD	MWD - Standard

Summary						
Site Name	Reference Measured Depth (ft)	Offset Measured Depth (ft)	Distance Between Centres (ft)	Distance Between Ellipses (ft)	Separation Factor	Warning
Offset Well - Wellbore - Design						
WELD_DRY CREEK PAD 7						
P_DRY CREEK 25-27 - P_DRY CREEK 25-27 - PLAN #	1,250.00	1,250.00	47.61	42.25	8.881	CC, ES
P_DRY CREEK 25-27 - P_DRY CREEK 25-27 - PLAN #	1,400.00	1,398.21	50.11	44.21	8.487	SF
P_DRY CREEK 31-27 - P_DRY CREEK 31-27 - PLAN #	1,250.00	1,250.00	47.61	44.28	14.310	CC, ES
P_DRY CREEK 31-27 - P_DRY CREEK 31-27 - PLAN #	1,300.00	1,299.18	48.06	44.61	13.929	SF
P_DRY CREEK 3-27 - P_DRY CREEK 3-27 - PLAN #1 1	1,250.00	1,250.00	30.81	25.44	5.747	CC, ES
P_DRY CREEK 3-27 - P_DRY CREEK 3-27 - PLAN #1 1	1,300.00	1,299.55	31.14	25.57	5.594	SF
P_DRY CREEK 4-27 - P_DRY CREEK 4-27 - PLAN #1 1	1,250.00	1,250.00	16.80	11.44	3.134	CC, ES
P_DRY CREEK 4-27 - P_DRY CREEK 4-27 - PLAN #1 1	1,300.00	1,299.77	17.17	11.60	3.083	SF
P_DRY CREEK 5-27 - P_DRY CREEK 5-27 - PLAN #1 1	1,250.00	1,250.00	30.81	25.44	5.747	CC, ES
P_DRY CREEK 5-27 - P_DRY CREEK 5-27 - PLAN #1 1	1,300.00	1,299.70	31.07	25.52	5.592	SF
P_DRY CREEK 6-27 - P_DRY CREEK 6-27 - PLAN #1 1	1,250.00	1,250.00	16.80	11.44	3.134	CC, ES
P_DRY CREEK 6-27 - P_DRY CREEK 6-27 - PLAN #1 1	1,300.00	1,299.80	17.07	11.51	3.071	SF
UPRR 42 PAN AM 'AM-TRUE #1 EXISTING - UPRR 42	1,250.00	1,250.00	70.71	20.33	1.403	Level 3, CC
UPRR 42 PAN AM 'AM-TRUE #1 EXISTING - UPRR 42	1,600.00	1,599.13	73.93	8.96	1.138	Level 2, ES, SF

Offset Design		WELD_DRY CREEK PAD 7 - P_DRY CREEK 25-27 - P_DRY CREEK 25-27 - PLAN #1 10-26-09 RHS										Offset Site Error:		0.00 ft
Survey Program:		0-MWD										Offset Well Error:		0.00 ft
Reference		Offset		Semi Major Axis			Distance							
Measured Depth	Vertical Depth	Measured Depth	Vertical Depth	Reference	Offset	Highside Toolface	Offset Wellbore Centre		Between Centres	Between Ellipses	Minimum Separation	Separation Factor	Warning	
(ft)	(ft)	(ft)	(ft)	(ft)	(ft)	(°)	+N/-S (ft)	+E/-W (ft)	(ft)	(ft)	(ft)			
0.00	0.00	0.00	0.00	0.00	0.00	89.60	0.34	47.61	47.61					
100.00	100.00	100.00	100.00	0.10	0.10	89.60	0.34	47.61	47.61	47.42	0.19	249.189		
200.00	200.00	200.00	200.00	0.32	0.32	89.60	0.34	47.61	47.61	46.97	0.64	74.320		
300.00	300.00	300.00	300.00	0.55	0.55	89.60	0.34	47.61	47.61	46.52	1.09	43.672		
400.00	400.00	400.00	400.00	0.77	0.77	89.60	0.34	47.61	47.61	46.07	1.54	30.921		
500.00	500.00	500.00	500.00	0.99	0.99	89.60	0.34	47.61	47.61	45.62	1.99	23.933		
600.00	600.00	600.00	600.00	1.22	1.22	89.60	0.34	47.61	47.61	45.17	2.44	19.522		
700.00	700.00	700.00	700.00	1.44	1.44	89.60	0.34	47.61	47.61	44.72	2.89	16.483		
800.00	800.00	800.00	800.00	1.67	1.67	89.60	0.34	47.61	47.61	44.27	3.34	14.263		
900.00	900.00	900.00	900.00	1.89	1.89	89.60	0.34	47.61	47.61	43.82	3.79	12.570		
1,000.00	1,000.00	1,000.00	1,000.00	2.12	2.12	89.60	0.34	47.61	47.61	43.37	4.24	11.237		
1,100.00	1,100.00	1,100.00	1,100.00	2.34	2.34	89.60	0.34	47.61	47.61	42.92	4.69	10.159		
1,200.00	1,200.00	1,200.00	1,200.00	2.57	2.57	89.60	0.34	47.61	47.61	42.47	5.14	9.270		
1,250.00	1,250.00	1,250.00	1,250.00	2.68	2.68	89.60	0.34	47.61	47.61	42.25	5.36	8.881	CC, ES	

CC - Min centre to center distance or convergent point, SF - min separation factor, ES - min ellipse separation

<b>Company:</b>	US ROCKIES REGION PLANNING	<b>Local Co-ordinate Reference:</b>	Well P_DRY CREEK 22-27
<b>Project:</b>	COLORADO NOTHERN ZONE - 83	<b>TVD Reference:</b>	WELL @ 5023.00ft (Original Well Elev)
<b>Reference Site:</b>	WELD_DRY CREEK PAD 7	<b>MD Reference:</b>	WELL @ 5023.00ft (Original Well Elev)
<b>Site Error:</b>	0.00ft	<b>North Reference:</b>	Grid
<b>Reference Well:</b>	P_DRY CREEK 22-27	<b>Survey Calculation Method:</b>	Minimum Curvature
<b>Well Error:</b>	0.00ft	<b>Output errors are at</b>	2.00 sigma
<b>Reference Wellbore</b>	P_DRY CREEK 22-27	<b>Database:</b>	EDM 2003.21 Single User Db
<b>Reference Design:</b>	PLAN #1 10-26-09 RHS	<b>Offset TVD Reference:</b>	Offset Datum

Offset Design WELD_DRY CREEK PAD 7 - P_DRY CREEK 25-27 - P_DRY CREEK 25-27 - PLAN #1 10-26-09 RHS												Offset Site Error:	0.00 ft
Survey Program: 0-MWD												Offset Well Error:	0.00 ft
Reference	Offset	Semi Major Axis		Distance									
Measured Depth (ft)	Vertical Depth (ft)	Measured Depth (ft)	Vertical Depth (ft)	Reference (ft)	Offset (ft)	Highside Toolface (°)	Offset Wellbore Centre +N/-S (ft)	+E/-W (ft)	Between Centres (ft)	Between Ellipses (ft)	Minimum Separation (ft)	Separation Factor	Warning
1,300.00	1,300.00	1,299.42	1,299.42	2.78	2.78	-86.43	0.04	47.91	47.88	42.33	5.56	8.617	
1,400.00	1,399.93	1,398.21	1,398.14	2.95	2.96	-87.56	-2.35	50.34	50.11	44.21	5.90	8.487 SF	
1,500.00	1,499.68	1,496.87	1,496.56	3.13	3.15	-89.53	-7.13	55.18	54.61	48.34	6.27	8.710	
1,600.00	1,599.13	1,595.31	1,594.48	3.33	3.35	-91.93	-14.26	62.41	61.46	54.79	6.66	9.222	
1,700.00	1,698.15	1,693.46	1,691.69	3.55	3.58	-94.37	-23.71	72.00	70.70	63.60	7.10	9.958	
1,800.00	1,796.63	1,791.22	1,788.01	3.80	3.84	-96.60	-35.45	83.90	82.36	74.77	7.60	10.843	
1,900.00	1,894.44	1,888.53	1,883.25	4.10	4.14	-98.53	-49.42	98.07	96.45	88.28	8.17	11.807	
2,000.00	1,991.46	1,985.30	1,977.25	4.46	4.49	-100.11	-65.56	114.43	112.92	104.09	8.83	12.786	
2,100.00	2,087.58	2,081.46	2,069.84	4.86	4.89	-101.38	-83.79	132.92	131.75	122.16	9.60	13.729	
2,209.24	2,191.42	2,185.75	2,169.20	5.38	5.39	-102.45	-106.02	155.46	154.96	144.40	10.56	14.679	
2,300.00	2,277.14	2,271.84	2,250.31	5.86	5.87	-103.09	-126.27	176.00	175.97	164.51	11.46	15.358	
2,400.00	2,371.58	2,366.07	2,338.06	6.41	6.45	-102.86	-150.39	200.46	200.47	187.94	12.53	16.004	
2,500.00	2,466.03	2,459.48	2,423.87	6.98	7.09	-101.96	-176.28	226.72	226.39	212.73	13.66	16.570	
2,600.00	2,560.47	2,551.88	2,507.53	7.57	7.79	-100.62	-203.81	254.64	253.83	238.98	14.86	17.086	
2,700.00	2,654.92	2,643.10	2,588.84	8.16	8.54	-99.00	-232.84	284.08	282.90	266.81	16.09	17.581	
2,800.00	2,749.37	2,734.07	2,668.61	8.77	9.35	-97.22	-263.54	315.21	313.69	296.33	17.36	18.074	
2,900.00	2,843.81	2,828.53	2,751.01	9.39	10.23	-95.56	-295.97	348.11	345.23	326.56	18.67	18.493	
3,000.00	2,938.26	2,922.99	2,833.40	10.01	11.13	-94.17	-328.40	381.00	376.99	357.00	19.99	18.863	
3,100.00	3,032.71	3,017.45	2,915.79	10.64	12.03	-93.00	-360.84	413.89	408.92	387.61	21.31	19.192	
3,200.00	3,127.15	3,111.91	2,998.19	11.27	12.95	-92.00	-393.27	446.78	440.98	418.35	22.63	19.486	
3,300.00	3,221.60	3,206.37	3,080.58	11.91	13.88	-91.14	-425.71	479.68	473.14	449.18	23.96	19.749	
3,400.00	3,316.04	3,300.83	3,162.97	12.54	14.81	-90.38	-458.14	512.57	505.39	480.10	25.29	19.986	
3,500.00	3,410.49	3,395.29	3,245.37	13.19	15.75	-89.71	-490.57	545.46	537.71	511.09	26.62	20.200	
3,600.00	3,504.94	3,489.74	3,327.76	13.83	16.69	-89.12	-523.01	578.35	570.09	542.14	27.95	20.395	
3,700.00	3,599.38	3,584.20	3,410.15	14.47	17.64	-88.60	-555.44	611.25	602.51	573.23	29.29	20.573	
3,800.00	3,693.83	3,678.66	3,492.54	15.12	18.58	-88.12	-587.87	644.14	634.98	604.36	30.62	20.736	
3,900.00	3,788.28	3,773.12	3,574.94	15.77	19.54	-87.69	-620.31	677.03	667.48	635.52	31.96	20.886	
4,000.00	3,882.72	3,867.58	3,657.33	16.42	20.49	-87.31	-652.74	709.92	700.01	666.72	33.30	21.024	
4,100.00	3,977.17	3,962.04	3,739.72	17.07	21.44	-86.95	-685.17	742.82	732.57	697.94	34.63	21.152	
4,200.00	4,071.62	4,056.50	3,822.12	17.73	22.40	-86.63	-717.61	775.71	765.15	729.18	35.97	21.271	
4,300.00	4,166.06	4,150.96	3,904.51	18.38	23.36	-86.33	-750.04	808.60	797.75	760.44	37.31	21.382	
4,400.00	4,260.51	4,245.42	3,986.90	19.03	24.32	-86.06	-782.48	841.49	830.37	791.73	38.65	21.485	
4,500.00	4,354.95	4,339.87	4,069.30	19.69	25.28	-85.81	-814.91	874.39	863.01	823.02	39.99	21.582	
4,600.00	4,449.40	4,434.33	4,151.69	20.34	26.24	-85.57	-847.34	907.28	895.66	854.33	41.33	21.673	
4,700.00	4,543.85	4,528.79	4,234.08	21.00	27.21	-85.35	-879.78	940.17	928.32	885.65	42.66	21.758	
4,800.00	4,638.29	4,623.25	4,316.48	21.66	28.17	-85.15	-912.21	973.06	960.99	916.99	44.00	21.839	
4,900.00	4,732.74	4,717.71	4,398.87	22.31	29.14	-84.96	-944.64	1,005.96	993.67	948.33	45.34	21.915	
5,000.00	4,827.19	4,812.17	4,481.26	22.97	30.10	-84.78	-977.08	1,038.85	1,026.36	979.68	46.68	21.987	
5,100.00	4,921.63	4,906.63	4,563.66	23.63	31.07	-84.62	-1,009.51	1,071.74	1,059.06	1,011.04	48.02	22.055	
5,200.00	5,016.08	5,001.09	4,646.05	24.29	32.03	-84.46	-1,041.95	1,104.63	1,091.77	1,042.41	49.36	22.119	
5,300.00	5,110.53	5,095.55	4,728.44	24.95	33.00	-84.31	-1,074.38	1,137.53	1,124.48	1,073.79	50.70	22.181	
5,400.00	5,204.97	5,190.00	4,810.83	25.61	33.97	-84.17	-1,106.81	1,170.42	1,157.21	1,105.17	52.03	22.239	
5,500.00	5,299.42	5,284.46	4,893.23	26.27	34.94	-84.04	-1,139.25	1,203.31	1,189.93	1,136.56	53.37	22.295	
5,573.23	5,368.58	5,369.82	4,967.93	26.75	35.74	-83.95	-1,168.23	1,232.71	1,213.64	1,159.22	54.43	22.299	
5,600.00	5,393.91	5,406.01	4,999.94	26.90	36.06	-84.10	-1,180.10	1,244.74	1,221.97	1,167.10	54.87	22.271	
5,700.00	5,489.19	5,542.98	5,122.94	27.35	37.06	-84.61	-1,222.38	1,287.63	1,251.27	1,195.00	56.27	22.238	
5,800.00	5,585.48	5,682.59	5,251.13	27.76	37.99	-85.06	-1,261.19	1,326.98	1,277.64	1,220.08	57.56	22.198	
5,900.00	5,682.65	5,824.65	5,384.17	28.13	38.82	-85.44	-1,296.13	1,362.42	1,300.97	1,242.25	58.72	22.155	
6,000.00	5,780.59	5,968.95	5,521.67	28.47	39.57	-85.75	-1,326.84	1,393.56	1,321.15	1,261.39	59.75	22.110	
6,100.00	5,879.17	6,115.20	5,663.09	28.76	40.21	-86.00	-1,352.96	1,420.05	1,338.08	1,277.44	60.65	22.064	
6,200.00	5,978.27	6,263.12	5,807.87	29.01	40.74	-86.19	-1,374.20	1,441.58	1,351.69	1,290.30	61.39	22.018	
6,300.00	6,077.78	6,412.37	5,955.33	29.21	41.16	-86.33	-1,390.27	1,457.89	1,361.91	1,299.92	61.99	21.969	

CC - Min centre to center distance or convergent point, SF - min separation factor, ES - min ellipse separation

<b>Company:</b>	US ROCKIES REGION PLANNING	<b>Local Co-ordinate Reference:</b>	Well P_DRY CREEK 22-27
<b>Project:</b>	COLORADO NOTHERN ZONE - 83	<b>TVD Reference:</b>	WELL @ 5023.00ft (Original Well Elev)
<b>Reference Site:</b>	WELD_DRY CREEK PAD 7	<b>MD Reference:</b>	WELL @ 5023.00ft (Original Well Elev)
<b>Site Error:</b>	0.00ft	<b>North Reference:</b>	Grid
<b>Reference Well:</b>	P_DRY CREEK 22-27	<b>Survey Calculation Method:</b>	Minimum Curvature
<b>Well Error:</b>	0.00ft	<b>Output errors are at</b>	2.00 sigma
<b>Reference Wellbore</b>	P_DRY CREEK 22-27	<b>Database:</b>	EDM 2003.21 Single User Db
<b>Reference Design:</b>	PLAN #1 10-26-09 RHS	<b>Offset TVD Reference:</b>	Offset Datum

Offset Design WELD_DRY CREEK PAD 7 - P_DRY CREEK 25-27 - P_DRY CREEK 25-27 - PLAN #1 10-26-09 RHS													Offset Site Error:	0.00 ft
Survey Program: 0-MWD													Offset Well Error:	0.00 ft
Reference		Offset		Semi Major Axis			Distance							
Measured Depth	Vertical Depth	Measured Depth	Vertical Depth	Reference	Offset	Highside Toolface	Offset Wellbore Centre		Between Centres	Between Ellipses	Minimum Separation	Separation Factor	Warning	
(ft)	(ft)	(ft)	(ft)	(ft)	(ft)	(°)	+N/-S (ft)	+E/-W (ft)	(ft)	(ft)	(ft)			
6,400.00	6,177.57	6,562.59	6,104.76	29.38	41.46	-86.41	-1,400.99	1,468.75	1,368.68	1,306.24	62.44	21.919		
6,500.00	6,277.53	6,713.39	6,255.36	29.50	41.66	-86.44	-1,406.20	1,474.04	1,371.97	1,309.22	62.75	21.864		
6,532.47	6,310.00	6,762.42	6,304.39	29.53	41.70	89.45	-1,406.69	1,474.54	1,372.29	1,309.46	62.83	21.843		
6,600.00	6,377.53	6,835.56	6,377.53	29.59	41.75	89.45	-1,406.72	1,474.57	1,372.31	1,309.36	62.95	21.800		
6,700.00	6,477.53	6,935.56	6,477.53	29.68	41.82	89.45	-1,406.72	1,474.57	1,372.31	1,309.20	63.11	21.744		
6,800.00	6,577.53	7,035.56	6,577.53	29.76	41.89	89.45	-1,406.72	1,474.57	1,372.31	1,309.03	63.28	21.686		
6,900.00	6,677.53	7,135.56	6,677.53	29.85	41.96	89.45	-1,406.72	1,474.57	1,372.31	1,308.86	63.45	21.628		
7,000.00	6,777.53	7,235.56	6,777.53	29.94	42.03	89.45	-1,406.72	1,474.57	1,372.31	1,308.69	63.62	21.569		
7,100.00	6,877.53	7,335.56	6,877.53	30.03	42.10	89.45	-1,406.72	1,474.57	1,372.31	1,308.51	63.80	21.510		
7,200.00	6,977.53	7,435.56	6,977.53	30.12	42.17	89.45	-1,406.72	1,474.57	1,372.31	1,308.34	63.98	21.450		
7,300.00	7,077.53	7,535.56	7,077.53	30.21	42.24	89.45	-1,406.72	1,474.57	1,372.31	1,308.15	64.16	21.390		
7,400.00	7,177.53	7,635.56	7,177.53	30.31	42.32	89.45	-1,406.72	1,474.57	1,372.31	1,307.97	64.34	21.329		
7,500.00	7,277.53	7,735.56	7,277.53	30.40	42.39	89.45	-1,406.72	1,474.57	1,372.31	1,307.78	64.53	21.267		
7,600.00	7,377.53	7,835.56	7,377.53	30.50	42.47	89.45	-1,406.72	1,474.57	1,372.31	1,307.60	64.72	21.205		
7,700.00	7,477.53	7,935.56	7,477.53	30.60	42.55	89.45	-1,406.72	1,474.57	1,372.31	1,307.40	64.91	21.142		
7,800.00	7,577.53	8,035.56	7,577.53	30.70	42.62	89.45	-1,406.72	1,474.57	1,372.31	1,307.21	65.10	21.079		
7,900.00	7,677.53	8,135.56	7,677.53	30.80	42.70	89.45	-1,406.72	1,474.57	1,372.31	1,307.01	65.30	21.016		
8,000.00	7,777.53	8,235.56	7,777.53	30.90	42.78	89.45	-1,406.72	1,474.57	1,372.31	1,306.81	65.50	20.952		
8,100.00	7,877.53	8,335.56	7,877.53	31.00	42.87	89.45	-1,406.72	1,474.57	1,372.31	1,306.61	65.70	20.888		
8,200.00	7,977.53	8,435.56	7,977.53	31.11	42.95	89.45	-1,406.72	1,474.57	1,372.31	1,306.41	65.90	20.823		
8,300.00	8,077.53	8,535.56	8,077.53	31.22	43.03	89.45	-1,406.72	1,474.57	1,372.31	1,306.20	66.11	20.758		
8,400.00	8,177.53	8,635.56	8,177.53	31.32	43.12	89.45	-1,406.72	1,474.57	1,372.31	1,305.99	66.32	20.692		
8,504.47	8,282.00	8,740.04	8,282.00	31.44	43.21	89.45	-1,406.72	1,474.57	1,372.31	1,305.77	66.54	20.624		

<b>Company:</b>	US ROCKIES REGION PLANNING	<b>Local Co-ordinate Reference:</b>	Well P_DRY CREEK 22-27
<b>Project:</b>	COLORADO NOTHERN ZONE - 83	<b>TVD Reference:</b>	WELL @ 5023.00ft (Original Well Elev)
<b>Reference Site:</b>	WELD_DRY CREEK PAD 7	<b>MD Reference:</b>	WELL @ 5023.00ft (Original Well Elev)
<b>Site Error:</b>	0.00ft	<b>North Reference:</b>	Grid
<b>Reference Well:</b>	P_DRY CREEK 22-27	<b>Survey Calculation Method:</b>	Minimum Curvature
<b>Well Error:</b>	0.00ft	<b>Output errors are at</b>	2.00 sigma
<b>Reference Wellbore</b>	P_DRY CREEK 22-27	<b>Database:</b>	EDM 2003.21 Single User Db
<b>Reference Design:</b>	PLAN #1 10-26-09 RHS	<b>Offset TVD Reference:</b>	Offset Datum

Offset Design WELD_DRY CREEK PAD 7 - P_DRY CREEK 31-27 - P_DRY CREEK 31-27 - PLAN #1 10-26-09 RHS												Offset Site Error:	0.00 ft
Survey Program: 0-Good_gyro												Offset Well Error:	0.00 ft
Reference	Offset	Semi Major Axis					Distance						Warning
Measured Depth (ft)	Vertical Depth (ft)	Measured Depth (ft)	Vertical Depth (ft)	Reference (ft)	Offset (ft)	Highside Toolface (°)	Offset Wellbore Centre +N/-S (ft)	+E/-W (ft)	Between Centres (ft)	Between Ellipses (ft)	Minimum Separation (ft)	Separation Factor	
0.00	0.00	0.00	0.00	0.00	0.00	-90.39	-0.33	-47.61	47.61				
100.00	100.00	100.00	100.00	0.10	0.04	-90.39	-0.33	-47.61	47.61	47.47	0.14	339.980	
200.00	200.00	200.00	200.00	0.32	0.10	-90.39	-0.33	-47.61	47.61	47.19	0.42	114.125	
300.00	300.00	300.00	300.00	0.55	0.15	-90.39	-0.33	-47.61	47.61	46.91	0.69	68.571	
400.00	400.00	400.00	400.00	0.77	0.20	-90.39	-0.33	-47.61	47.61	46.64	0.97	49.009	
500.00	500.00	500.00	500.00	0.99	0.25	-90.39	-0.33	-47.61	47.61	46.36	1.25	38.131	
600.00	600.00	600.00	600.00	1.22	0.31	-90.39	-0.33	-47.61	47.61	46.08	1.53	31.205	
700.00	700.00	700.00	700.00	1.44	0.36	-90.39	-0.33	-47.61	47.61	45.81	1.80	26.408	
800.00	800.00	800.00	800.00	1.67	0.41	-90.39	-0.33	-47.61	47.61	45.53	2.08	22.889	
900.00	900.00	900.00	900.00	1.89	0.46	-90.39	-0.33	-47.61	47.61	45.25	2.36	20.198	
1,000.00	1,000.00	1,000.00	1,000.00	2.12	0.52	-90.39	-0.33	-47.61	47.61	44.97	2.63	18.073	
1,100.00	1,100.00	1,100.00	1,100.00	2.34	0.57	-90.39	-0.33	-47.61	47.61	44.70	2.91	16.353	
1,200.00	1,200.00	1,200.00	1,200.00	2.57	0.62	-90.39	-0.33	-47.61	47.61	44.42	3.19	14.932	
1,250.00	1,250.00	1,250.00	1,250.00	2.68	0.65	-90.39	-0.33	-47.61	47.61	44.28	3.33	14.310 CC, ES	
1,300.00	1,300.00	1,299.18	1,299.18	2.78	0.67	94.16	-0.39	-48.02	48.06	44.61	3.45	13.929 SF	
1,400.00	1,399.93	1,397.39	1,397.32	2.95	0.72	97.35	-0.86	-51.36	51.80	48.12	3.67	14.099	
1,500.00	1,499.68	1,495.10	1,494.80	3.13	0.78	102.45	-1.80	-57.98	59.66	55.75	3.91	15.258	
1,600.00	1,599.13	1,592.01	1,591.20	3.33	0.85	107.89	-3.20	-67.79	72.09	67.92	4.17	17.305	
1,700.00	1,698.15	1,687.82	1,686.12	3.55	0.93	112.65	-5.03	-80.66	89.31	84.86	4.45	20.070	
1,800.00	1,796.63	1,782.24	1,779.18	3.80	1.03	116.41	-7.27	-96.41	111.31	106.54	4.77	23.332	
1,900.00	1,894.44	1,875.00	1,870.05	4.10	1.15	119.23	-9.89	-114.84	137.96	132.83	5.14	26.862	
2,000.00	1,991.46	1,965.87	1,958.44	4.46	1.30	121.27	-12.86	-135.70	169.11	163.56	5.55	30.456	
2,100.00	2,087.58	2,058.42	2,047.97	4.86	1.48	122.99	-16.16	-158.90	203.89	197.86	6.03	33.827	
2,209.24	2,191.42	2,159.44	2,145.69	5.38	1.69	124.88	-19.78	-184.29	244.33	237.72	6.60	36.993	
2,300.00	2,277.14	2,242.88	2,226.39	5.86	1.86	126.78	-22.76	-205.26	279.13	272.01	7.12	39.219	
2,400.00	2,371.58	2,334.81	2,315.31	6.41	2.06	128.39	-26.05	-228.37	317.71	310.01	7.70	41.256	
2,500.00	2,466.03	2,426.74	2,404.23	6.98	2.26	129.65	-29.34	-251.47	356.47	348.16	8.30	42.946	
2,600.00	2,560.47	2,518.67	2,493.15	7.57	2.47	130.67	-32.63	-274.58	395.34	386.42	8.91	44.360	
2,700.00	2,654.92	2,610.60	2,582.07	8.16	2.68	131.50	-35.91	-297.69	434.29	424.76	9.53	45.555	
2,800.00	2,749.37	2,702.53	2,670.98	8.77	2.89	132.20	-39.20	-320.79	473.32	463.16	10.16	46.574	
2,900.00	2,843.81	2,794.46	2,759.90	9.39	3.10	132.79	-42.49	-343.90	512.39	501.59	10.80	47.450	
3,000.00	2,938.26	2,886.39	2,848.82	10.01	3.31	133.30	-45.78	-367.01	551.51	540.07	11.44	48.210	
3,100.00	3,032.71	2,978.32	2,937.74	10.64	3.53	133.74	-49.07	-390.12	590.65	578.57	12.09	48.874	
3,200.00	3,127.15	3,070.25	3,026.66	11.27	3.74	134.13	-52.35	-413.22	629.82	617.09	12.73	49.457	
3,300.00	3,221.60	3,162.18	3,115.58	11.91	3.95	134.47	-55.64	-436.33	669.02	655.63	13.39	49.974	
3,400.00	3,316.04	3,254.11	3,204.49	12.54	4.17	134.77	-58.93	-459.44	708.23	694.19	14.04	50.434	
3,500.00	3,410.49	3,346.04	3,293.41	13.19	4.39	135.05	-62.22	-482.54	747.46	732.76	14.70	50.845	
3,600.00	3,504.94	3,437.98	3,382.33	13.83	4.60	135.29	-65.51	-505.65	786.70	771.33	15.36	51.216	
3,700.00	3,599.38	3,529.91	3,471.25	14.47	4.82	135.51	-68.79	-528.76	825.95	809.92	16.02	51.550	
3,800.00	3,693.83	3,621.84	3,560.17	15.12	5.03	135.71	-72.08	-551.86	865.21	848.52	16.69	51.854	
3,900.00	3,788.28	3,713.77	3,649.09	15.77	5.25	135.90	-75.37	-574.97	904.47	887.12	17.35	52.131	
4,000.00	3,882.72	3,805.70	3,738.00	16.42	5.47	136.07	-78.66	-598.08	943.75	925.73	18.02	52.384	
4,100.00	3,977.17	3,897.63	3,826.92	17.07	5.69	136.22	-81.95	-621.18	983.03	964.35	18.68	52.616	
4,200.00	4,071.62	3,989.56	3,915.84	17.73	5.90	136.36	-85.23	-644.29	1,022.32	1,002.97	19.35	52.830	
4,300.00	4,166.06	4,081.49	4,004.76	18.38	6.12	136.50	-88.52	-667.40	1,061.61	1,041.59	20.02	53.027	
4,400.00	4,260.51	4,173.42	4,093.68	19.03	6.34	136.62	-91.81	-690.50	1,100.91	1,080.22	20.69	53.210	
4,500.00	4,354.95	4,265.35	4,182.60	19.69	6.56	136.73	-95.10	-713.61	1,140.21	1,118.85	21.36	53.379	
4,600.00	4,449.40	4,357.28	4,271.51	20.34	6.78	136.84	-98.39	-736.72	1,179.51	1,157.48	22.03	53.537	
4,700.00	4,543.85	4,449.21	4,360.43	21.00	6.99	136.94	-101.67	-759.82	1,218.82	1,196.12	22.70	53.684	
4,800.00	4,638.29	4,541.14	4,449.35	21.66	7.21	137.03	-104.96	-782.93	1,258.13	1,234.75	23.38	53.821	
4,900.00	4,732.74	4,633.07	4,538.27	22.31	7.43	137.12	-108.25	-806.04	1,297.44	1,273.39	24.05	53.950	
5,000.00	4,827.19	4,725.00	4,627.19	22.97	7.65	137.21	-111.54	-829.15	1,336.76	1,312.04	24.72	54.071	

CC - Min centre to center distance or convergent point, SF - min separation factor, ES - min ellipse separation

<b>Company:</b>	US ROCKIES REGION PLANNING	<b>Local Co-ordinate Reference:</b>	Well P_DRY CREEK 22-27
<b>Project:</b>	COLORADO NOTHERN ZONE - 83	<b>TVD Reference:</b>	WELL @ 5023.00ft (Original Well Elev)
<b>Reference Site:</b>	WELD_DRY CREEK PAD 7	<b>MD Reference:</b>	WELL @ 5023.00ft (Original Well Elev)
<b>Site Error:</b>	0.00ft	<b>North Reference:</b>	Grid
<b>Reference Well:</b>	P_DRY CREEK 22-27	<b>Survey Calculation Method:</b>	Minimum Curvature
<b>Well Error:</b>	0.00ft	<b>Output errors are at</b>	2.00 sigma
<b>Reference Wellbore</b>	P_DRY CREEK 22-27	<b>Database:</b>	EDM 2003.21 Single User Db
<b>Reference Design:</b>	PLAN #1 10-26-09 RHS	<b>Offset TVD Reference:</b>	Offset Datum

Offset Design WELD_DRY CREEK PAD 7 - P_DRY CREEK 31-27 - P_DRY CREEK 31-27 - PLAN #1 10-26-09 RHS												Offset Site Error:	0.00 ft
Survey Program: 0-Good_gyro												Offset Well Error:	0.00 ft
Reference	Offset	Semi Major Axis		Distance									
Measured Depth (ft)	Vertical Depth (ft)	Measured Depth (ft)	Vertical Depth (ft)	Reference (ft)	Offset (ft)	Highside Toolface (°)	Offset Wellbore Centre +N/-S (ft)	+E/-W (ft)	Between Centres (ft)	Between Ellipses (ft)	Minimum Separation (ft)	Separation Factor	Warning
5,100.00	4,921.63	4,816.93	4,716.11	23.63	7.87	137.28	-114.83	-852.25	1,376.08	1,350.68	25.40	54.185	
5,200.00	5,016.08	4,908.86	4,805.02	24.29	8.09	137.36	-118.12	-875.36	1,415.40	1,389.33	26.07	54.292	
5,300.00	5,110.53	5,000.79	4,893.94	24.95	8.31	137.43	-121.40	-898.47	1,454.72	1,427.97	26.74	54.393	
5,400.00	5,204.97	5,092.72	4,982.86	25.61	8.52	137.49	-124.69	-921.57	1,494.04	1,466.62	27.42	54.488	
5,500.00	5,299.42	5,184.65	5,071.78	26.27	8.74	137.56	-127.98	-944.68	1,533.37	1,505.27	28.09	54.578	
5,573.23	5,368.58	5,251.98	5,136.90	26.75	8.90	137.60	-130.39	-961.60	1,562.17	1,533.58	28.59	54.641	
5,600.00	5,393.91	5,276.62	5,160.73	26.90	8.96	137.77	-131.27	-967.80	1,572.61	1,543.88	28.72	54.748	
5,700.00	5,489.19	5,369.32	5,250.40	27.35	9.18	138.29	-134.58	-991.10	1,610.10	1,580.94	29.16	55.223	
5,800.00	5,585.48	5,462.93	5,340.94	27.76	9.41	138.69	-137.93	-1,014.62	1,645.17	1,615.60	29.57	55.642	
5,900.00	5,682.65	5,557.33	5,432.25	28.13	9.63	138.97	-141.31	-1,038.35	1,677.77	1,647.82	29.95	56.013	
6,000.00	5,780.59	5,652.41	5,524.21	28.47	9.86	139.13	-144.71	-1,062.25	1,707.90	1,677.56	30.34	56.296	
6,100.00	5,879.17	5,751.00	5,619.58	28.76	10.09	139.17	-148.23	-1,087.02	1,735.54	1,704.74	30.80	56.352	
6,200.00	5,978.27	5,903.31	5,767.94	29.01	10.41	139.00	-153.07	-1,120.99	1,759.00	1,727.68	31.32	56.160	
6,300.00	6,077.78	6,059.39	5,921.67	29.21	10.67	138.86	-156.86	-1,147.65	1,776.77	1,745.03	31.74	55.977	
6,400.00	6,177.57	6,218.31	6,079.46	29.38	10.85	138.75	-159.51	-1,166.25	1,788.70	1,756.64	32.06	55.796	
6,500.00	6,277.53	6,379.02	6,239.83	29.50	10.97	138.67	-160.93	-1,176.21	1,794.66	1,762.40	32.26	55.627	
6,532.47	6,310.00	6,431.40	6,292.19	29.53	10.99	-45.47	-161.11	-1,177.53	1,795.30	1,762.99	32.31	55.568	
6,600.00	6,377.53	6,516.74	6,377.53	29.59	11.00	-45.48	-161.17	-1,177.91	1,795.44	1,763.03	32.41	55.399	
6,700.00	6,477.53	6,616.74	6,477.53	29.68	11.02	-45.48	-161.17	-1,177.91	1,795.44	1,762.90	32.54	55.181	
6,800.00	6,577.53	6,716.74	6,577.53	29.76	11.04	-45.48	-161.17	-1,177.91	1,795.44	1,762.77	32.67	54.961	
6,900.00	6,677.53	6,816.74	6,677.53	29.85	11.05	-45.48	-161.17	-1,177.91	1,795.44	1,762.64	32.80	54.740	
7,000.00	6,777.53	6,916.74	6,777.53	29.94	11.07	-45.48	-161.17	-1,177.91	1,795.44	1,762.51	32.93	54.517	
7,100.00	6,877.53	7,016.74	6,877.53	30.03	11.09	-45.48	-161.17	-1,177.91	1,795.44	1,762.37	33.07	54.294	
7,200.00	6,977.53	7,116.74	6,977.53	30.12	11.11	-45.48	-161.17	-1,177.91	1,795.44	1,762.24	33.21	54.069	
7,300.00	7,077.53	7,216.74	7,077.53	30.21	11.12	-45.48	-161.17	-1,177.91	1,795.44	1,762.10	33.35	53.843	
7,400.00	7,177.53	7,316.74	7,177.53	30.31	11.14	-45.48	-161.17	-1,177.91	1,795.44	1,761.96	33.49	53.616	
7,500.00	7,277.53	7,416.74	7,277.53	30.40	11.16	-45.48	-161.17	-1,177.91	1,795.44	1,761.81	33.63	53.389	
7,600.00	7,377.53	7,516.74	7,377.53	30.50	11.18	-45.48	-161.17	-1,177.91	1,795.44	1,761.67	33.77	53.160	
7,700.00	7,477.53	7,616.74	7,477.53	30.60	11.20	-45.48	-161.17	-1,177.91	1,795.44	1,761.52	33.92	52.931	
7,800.00	7,577.53	7,716.74	7,577.53	30.70	11.21	-45.48	-161.17	-1,177.91	1,795.44	1,761.37	34.07	52.701	
7,900.00	7,677.53	7,816.74	7,677.53	30.80	11.23	-45.48	-161.17	-1,177.91	1,795.44	1,761.22	34.22	52.471	
8,000.00	7,777.53	7,916.74	7,777.53	30.90	11.25	-45.48	-161.17	-1,177.91	1,795.44	1,761.07	34.37	52.240	
8,100.00	7,877.53	8,016.74	7,877.53	31.00	11.27	-45.48	-161.17	-1,177.91	1,795.44	1,760.92	34.52	52.009	
8,200.00	7,977.53	8,116.74	7,977.53	31.11	11.29	-45.48	-161.17	-1,177.91	1,795.44	1,760.77	34.68	51.778	
8,300.00	8,077.53	8,216.74	8,077.53	31.22	11.31	-45.48	-161.17	-1,177.91	1,795.44	1,760.61	34.83	51.546	
8,400.00	8,177.53	8,316.74	8,177.53	31.32	11.33	-45.48	-161.17	-1,177.91	1,795.44	1,760.45	34.99	51.314	
8,504.47	8,282.00	8,421.21	8,282.00	31.44	11.35	-45.48	-161.17	-1,177.91	1,795.44	1,760.29	35.15	51.072	

<b>Company:</b>	US ROCKIES REGION PLANNING	<b>Local Co-ordinate Reference:</b>	Well P_DRY CREEK 22-27
<b>Project:</b>	COLORADO NOTHERN ZONE - 83	<b>TVD Reference:</b>	WELL @ 5023.00ft (Original Well Elev)
<b>Reference Site:</b>	WELD_DRY CREEK PAD 7	<b>MD Reference:</b>	WELL @ 5023.00ft (Original Well Elev)
<b>Site Error:</b>	0.00ft	<b>North Reference:</b>	Grid
<b>Reference Well:</b>	P_DRY CREEK 22-27	<b>Survey Calculation Method:</b>	Minimum Curvature
<b>Well Error:</b>	0.00ft	<b>Output errors are at</b>	2.00 sigma
<b>Reference Wellbore</b>	P_DRY CREEK 22-27	<b>Database:</b>	EDM 2003.21 Single User Db
<b>Reference Design:</b>	PLAN #1 10-26-09 RHS	<b>Offset TVD Reference:</b>	Offset Datum

Offset Design												Offset Site Error:	0.00 ft
Survey Program: 0-MWD												Offset Well Error:	0.00 ft
Reference	Offset	Semi Major Axis		Distance		Warning							
Measured Depth (ft)	Vertical Depth (ft)	Measured Depth (ft)	Vertical Depth (ft)	Reference (ft)	Offset (ft)	Highside Toolface (°)	Offset Wellbore Centre +N/-S (ft)	+E/-W (ft)	Between Centres (ft)	Between Ellipses (ft)	Minimum Separation (ft)	Separation Factor	
0.00	0.00	0.00	0.00	0.00	0.00	89.57	0.23	30.80	30.81				
100.00	100.00	100.00	100.00	0.10	0.10	89.57	0.23	30.80	30.81	30.61	0.19	161.240	
200.00	200.00	200.00	200.00	0.32	0.32	89.57	0.23	30.80	30.81	30.16	0.64	48.089	
300.00	300.00	300.00	300.00	0.55	0.55	89.57	0.23	30.80	30.81	29.72	1.09	28.259	
400.00	400.00	400.00	400.00	0.77	0.77	89.57	0.23	30.80	30.81	29.27	1.54	20.008	
500.00	500.00	500.00	500.00	0.99	0.99	89.57	0.23	30.80	30.81	28.82	1.99	15.486	
600.00	600.00	600.00	600.00	1.22	1.22	89.57	0.23	30.80	30.81	28.37	2.44	12.632	
700.00	700.00	700.00	700.00	1.44	1.44	89.57	0.23	30.80	30.81	27.92	2.89	10.666	
800.00	800.00	800.00	800.00	1.67	1.67	89.57	0.23	30.80	30.81	27.47	3.34	9.229	
900.00	900.00	900.00	900.00	1.89	1.89	89.57	0.23	30.80	30.81	27.02	3.79	8.134	
1,000.00	1,000.00	1,000.00	1,000.00	2.12	2.12	89.57	0.23	30.80	30.81	26.57	4.24	7.271	
1,100.00	1,100.00	1,100.00	1,100.00	2.34	2.34	89.57	0.23	30.80	30.81	26.12	4.69	6.573	
1,200.00	1,200.00	1,200.00	1,200.00	2.57	2.57	89.57	0.23	30.80	30.81	25.67	5.14	5.998	
1,250.00	1,250.00	1,250.00	1,250.00	2.68	2.68	89.57	0.23	30.80	30.81	25.44	5.36	5.747 CC, ES	
1,300.00	1,300.00	1,299.55	1,299.55	2.78	2.79	-87.55	0.48	31.15	31.14	25.57	5.57	5.594 SF	
1,400.00	1,399.93	1,398.39	1,398.32	2.95	3.00	-96.50	2.48	33.92	34.28	28.33	5.95	5.764	
1,500.00	1,499.68	1,496.41	1,496.11	3.13	3.22	-109.55	6.43	39.39	42.46	36.12	6.34	6.701	
1,600.00	1,599.13	1,593.11	1,592.29	3.33	3.44	-121.12	12.24	47.44	57.27	50.54	6.73	8.509	
1,700.00	1,698.15	1,687.98	1,686.28	3.55	3.68	-129.26	19.79	57.90	78.92	71.79	7.13	11.072	
1,800.00	1,796.63	1,780.59	1,777.56	3.80	3.94	-134.58	28.91	70.53	106.99	99.45	7.53	14.204	
1,900.00	1,894.44	1,870.53	1,865.69	4.10	4.21	-138.01	39.42	85.08	141.01	133.07	7.95	17.745	
2,000.00	1,991.46	1,957.46	1,950.29	4.46	4.52	-140.24	51.10	101.27	180.61	172.24	8.37	21.568	
2,100.00	2,087.58	2,041.08	2,031.07	4.86	4.84	-141.70	63.76	118.80	225.45	216.63	8.82	25.567	
2,209.24	2,191.42	2,128.39	2,114.69	5.38	5.22	-142.69	78.44	139.14	280.04	270.72	9.32	30.037	
2,300.00	2,277.14	2,198.18	2,180.96	5.86	5.56	-143.73	91.24	156.87	328.64	318.83	9.81	33.497	
2,400.00	2,371.58	2,281.29	2,259.51	6.41	5.99	-144.55	107.13	178.88	383.30	372.91	10.39	36.886	
2,500.00	2,466.03	2,364.91	2,338.55	6.98	6.45	-145.18	123.12	201.02	438.00	427.01	10.99	39.844	
2,600.00	2,560.47	2,448.54	2,417.59	7.57	6.92	-145.66	139.11	223.17	492.74	481.13	11.61	42.435	
2,700.00	2,654.92	2,532.16	2,496.63	8.16	7.40	-146.05	155.09	245.31	547.49	535.25	12.24	44.715	
2,800.00	2,749.37	2,615.79	2,575.67	8.77	7.89	-146.37	171.08	267.46	602.26	589.37	12.89	46.728	
2,900.00	2,843.81	2,699.41	2,654.71	9.39	8.39	-146.64	187.07	289.60	657.04	643.50	13.54	48.512	
3,000.00	2,938.26	2,783.04	2,733.75	10.01	8.90	-146.86	203.06	311.75	711.83	697.62	14.21	50.096	
3,100.00	3,032.71	2,866.67	2,812.79	10.64	9.41	-147.05	219.05	333.89	766.62	751.74	14.88	51.513	
3,200.00	3,127.15	2,950.29	2,891.83	11.27	9.93	-147.22	235.03	356.04	821.42	805.86	15.56	52.786	
3,300.00	3,221.60	3,033.92	2,970.87	11.91	10.45	-147.36	251.02	378.19	876.23	859.98	16.25	53.933	
3,400.00	3,316.04	3,117.54	3,049.91	12.54	10.97	-147.49	267.01	400.33	931.03	914.10	16.94	54.971	
3,500.00	3,410.49	3,201.17	3,128.94	13.19	11.50	-147.61	283.00	422.48	985.85	968.21	17.63	55.913	
3,600.00	3,504.94	3,284.79	3,207.98	13.83	12.03	-147.71	298.98	444.62	1,040.66	1,022.33	18.33	56.770	
3,700.00	3,599.38	3,368.42	3,287.02	14.47	12.57	-147.80	314.97	466.77	1,095.47	1,076.44	19.03	57.553	
3,800.00	3,693.83	3,452.04	3,366.06	15.12	13.10	-147.89	330.96	488.91	1,150.29	1,130.55	19.74	58.271	
3,900.00	3,788.28	3,535.67	3,445.10	15.77	13.64	-147.96	346.95	511.06	1,205.11	1,184.66	20.45	58.932	
4,000.00	3,882.72	3,619.30	3,524.14	16.42	14.17	-148.03	362.94	533.21	1,259.93	1,238.77	21.16	59.541	
4,100.00	3,977.17	3,702.92	3,603.18	17.07	14.71	-148.09	378.92	555.35	1,314.75	1,292.87	21.87	60.104	
4,200.00	4,071.62	3,786.55	3,682.22	17.73	15.25	-148.15	394.91	577.50	1,369.57	1,346.98	22.59	60.625	
4,300.00	4,166.06	3,870.17	3,761.26	18.38	15.80	-148.21	410.90	599.64	1,424.39	1,401.09	23.31	61.109	
4,400.00	4,260.51	3,969.32	3,855.03	19.03	16.41	-148.27	429.74	625.74	1,479.12	1,455.05	24.07	61.455	
4,500.00	4,354.95	4,126.57	4,005.55	19.69	17.16	-148.49	456.34	662.58	1,531.05	1,506.14	24.92	61.449	
4,600.00	4,449.40	4,292.54	4,166.87	20.34	17.83	-148.88	479.13	694.15	1,578.76	1,553.02	25.74	61.343	
4,700.00	4,543.85	4,466.76	4,338.33	21.00	18.40	-149.44	497.12	719.08	1,621.90	1,595.38	26.52	61.151	
4,800.00	4,638.29	4,648.50	4,518.83	21.66	18.85	-150.18	509.36	736.03	1,660.21	1,632.95	27.26	60.899	
4,900.00	4,732.74	4,836.69	4,706.74	22.31	19.16	-151.11	514.95	743.76	1,693.45	1,665.51	27.94	60.618	
5,000.00	4,827.19	4,957.13	4,827.19	22.97	19.30	-151.77	515.21	744.14	1,722.88	1,694.39	28.50	60.462	

CC - Min centre to center distance or convergent point, SF - min separation factor, ES - min ellipse separation

<b>Company:</b>	US ROCKIES REGION PLANNING	<b>Local Co-ordinate Reference:</b>	Well P_DRY CREEK 22-27
<b>Project:</b>	COLORADO NORTHERN ZONE - 83	<b>TVD Reference:</b>	WELL @ 5023.00ft (Original Well Elev)
<b>Reference Site:</b>	WELD_DRY CREEK PAD 7	<b>MD Reference:</b>	WELL @ 5023.00ft (Original Well Elev)
<b>Site Error:</b>	0.00ft	<b>North Reference:</b>	Grid
<b>Reference Well:</b>	P_DRY CREEK 22-27	<b>Survey Calculation Method:</b>	Minimum Curvature
<b>Well Error:</b>	0.00ft	<b>Output errors are at</b>	2.00 sigma
<b>Reference Wellbore</b>	P_DRY CREEK 22-27	<b>Database:</b>	EDM 2003.21 Single User Db
<b>Reference Design:</b>	PLAN #1 10-26-09 RHS	<b>Offset TVD Reference:</b>	Offset Datum

Offset Design WELD_DRY CREEK PAD 7 - P_DRY CREEK 3-27 - P_DRY CREEK 3-27 - PLAN #1 10-26-09 RHS												Offset Site Error:	0.00 ft
Survey Program: 0-MWD												Offset Well Error:	0.00 ft
Reference		Offset		Semi Major Axis			Distance						
Measured Depth (ft)	Vertical Depth (ft)	Measured Depth (ft)	Vertical Depth (ft)	Reference (ft)	Offset (ft)	Highside Toolface (°)	Offset Wellbore Centre +N/-S (ft)	+E/-W (ft)	Between Centres (ft)	Between Ellipses (ft)	Minimum Separation (ft)	Separation Factor	Warning
5,100.00	4,921.63	5,051.58	4,921.63	23.63	19.41	-152.27	515.21	744.14	1,752.25	1,723.23	29.03	60.366	
5,200.00	5,016.08	5,146.03	5,016.08	24.29	19.53	-152.76	515.21	744.14	1,781.75	1,752.19	29.56	60.283	
5,300.00	5,110.53	5,240.47	5,110.53	24.95	19.64	-153.23	515.21	744.14	1,811.36	1,781.27	30.08	60.214	
5,400.00	5,204.97	5,334.92	5,204.97	25.61	19.76	-153.68	515.21	744.14	1,841.08	1,810.47	30.61	60.156	
5,500.00	5,299.42	5,429.37	5,299.42	26.27	19.87	-154.12	515.21	744.14	1,870.90	1,839.77	31.13	60.108	
5,573.23	5,368.58	5,498.53	5,368.58	26.75	19.96	-154.44	515.21	744.14	1,892.81	1,861.30	31.51	60.079	
5,600.00	5,393.91	5,523.85	5,393.91	26.90	19.99	-154.62	515.21	744.14	1,900.72	1,869.02	31.69	59.973	
5,700.00	5,489.19	5,619.14	5,489.19	27.35	20.11	-155.25	515.21	744.14	1,928.41	1,896.07	32.34	59.635	
5,800.00	5,585.48	5,715.43	5,585.48	27.76	20.24	-155.79	515.21	744.14	1,953.11	1,920.17	32.94	59.285	
5,900.00	5,682.65	5,812.60	5,682.65	28.13	20.37	-156.24	515.21	744.14	1,974.77	1,941.26	33.51	58.928	
6,000.00	5,780.59	5,910.53	5,780.59	28.47	20.50	-156.63	515.21	744.14	1,993.34	1,959.31	34.04	58.563	
6,100.00	5,879.17	6,009.11	5,879.17	28.76	20.63	-156.94	515.21	744.14	2,008.78	1,974.26	34.52	58.194	
6,200.00	5,978.27	6,108.22	5,978.27	29.01	20.76	-157.18	515.21	744.14	2,021.06	1,986.10	34.95	57.819	
6,300.00	6,077.78	6,207.73	6,077.78	29.21	20.90	-157.36	515.21	744.14	2,030.14	1,994.80	35.34	57.439	
6,400.00	6,177.57	6,307.52	6,177.57	29.38	21.04	-157.48	515.21	744.14	2,036.02	2,000.34	35.69	57.054	
6,500.00	6,277.53	6,407.47	6,277.53	29.50	21.18	-157.53	515.21	744.14	2,038.68	2,002.70	35.98	56.662	
6,532.47	6,310.00	6,439.95	6,310.00	29.53	21.23	18.35	515.21	744.14	2,038.85	2,002.78	36.07	56.529	
6,600.00	6,377.53	6,507.47	6,377.53	29.59	21.32	18.35	515.21	744.14	2,038.85	2,002.57	36.28	56.197	
6,700.00	6,477.53	6,607.47	6,477.53	29.68	21.46	18.35	515.21	744.14	2,038.85	2,002.26	36.59	55.718	
6,800.00	6,577.53	6,707.47	6,577.53	29.76	21.61	18.35	515.21	744.14	2,038.85	2,001.94	36.91	55.244	
6,900.00	6,677.53	6,807.47	6,677.53	29.85	21.75	18.35	515.21	744.14	2,038.85	2,001.63	37.22	54.774	
7,000.00	6,777.53	6,907.47	6,777.53	29.94	21.90	18.35	515.21	744.14	2,038.85	2,001.31	37.54	54.308	
7,100.00	6,877.53	7,007.47	6,877.53	30.03	22.05	18.35	515.21	744.14	2,038.85	2,000.99	37.86	53.846	
7,200.00	6,977.53	7,107.47	6,977.53	30.12	22.20	18.35	515.21	744.14	2,038.85	2,000.66	38.19	53.388	
7,300.00	7,077.53	7,207.47	7,077.53	30.21	22.35	18.35	515.21	744.14	2,038.85	2,000.33	38.52	52.935	
7,400.00	7,177.53	7,307.47	7,177.53	30.31	22.50	18.35	515.21	744.14	2,038.85	2,000.00	38.85	52.486	
7,500.00	7,277.53	7,407.47	7,277.53	30.40	22.66	18.35	515.21	744.14	2,038.85	1,999.67	39.18	52.041	
7,600.00	7,377.53	7,507.47	7,377.53	30.50	22.81	18.35	515.21	744.14	2,038.85	1,999.34	39.51	51.601	
7,700.00	7,477.53	7,607.47	7,477.53	30.60	22.97	18.35	515.21	744.14	2,038.85	1,999.00	39.85	51.166	
7,800.00	7,577.53	7,707.47	7,577.53	30.70	23.13	18.35	515.21	744.14	2,038.85	1,998.66	40.19	50.735	
7,900.00	7,677.53	7,807.47	7,677.53	30.80	23.28	18.35	515.21	744.14	2,038.85	1,998.32	40.53	50.309	
8,000.00	7,777.53	7,907.47	7,777.53	30.90	23.44	18.35	515.21	744.14	2,038.85	1,997.98	40.87	49.887	
8,100.00	7,877.53	8,007.47	7,877.53	31.00	23.60	18.35	515.21	744.14	2,038.85	1,997.64	41.21	49.469	
8,200.00	7,977.53	8,029.95	7,900.00	31.11	23.64	18.35	515.21	744.14	2,040.32	1,998.91	41.41	49.266	
8,300.00	8,077.53	8,029.95	7,900.00	31.22	23.64	18.35	515.21	744.14	2,046.56	2,004.99	41.57	49.227	
8,400.00	8,177.53	8,029.95	7,900.00	31.32	23.64	18.35	515.21	744.14	2,057.65	2,015.92	41.73	49.303	
8,504.47	8,282.00	8,029.95	7,900.00	31.44	23.64	18.35	515.21	744.14	2,074.33	2,032.42	41.90	49.502	

<b>Company:</b>	US ROCKIES REGION PLANNING	<b>Local Co-ordinate Reference:</b>	Well P_DRY CREEK 22-27
<b>Project:</b>	COLORADO NOTHERN ZONE - 83	<b>TVD Reference:</b>	WELL @ 5023.00ft (Original Well Elev)
<b>Reference Site:</b>	WELD_DRY CREEK PAD 7	<b>MD Reference:</b>	WELL @ 5023.00ft (Original Well Elev)
<b>Site Error:</b>	0.00ft	<b>North Reference:</b>	Grid
<b>Reference Well:</b>	P_DRY CREEK 22-27	<b>Survey Calculation Method:</b>	Minimum Curvature
<b>Well Error:</b>	0.00ft	<b>Output errors are at</b>	2.00 sigma
<b>Reference Wellbore</b>	P_DRY CREEK 22-27	<b>Database:</b>	EDM 2003.21 Single User Db
<b>Reference Design:</b>	PLAN #1 10-26-09 RHS	<b>Offset TVD Reference:</b>	Offset Datum

Offset Design WELD_DRY CREEK PAD 7 - P_DRY CREEK 4-27 - P_DRY CREEK 4-27 - PLAN #1 10-26-09 RHS												Offset Site Error:	0.00 ft
Survey Program: 0-MWD												Offset Well Error:	0.00 ft
Reference	Offset	Semi Major Axis		Distance		Warning							
Measured Depth (ft)	Vertical Depth (ft)	Measured Depth (ft)	Vertical Depth (ft)	Reference (ft)	Offset (ft)	Highside Toolface (°)	Offset Wellbore Centre +N/-S (ft)	+E/-W (ft)	Between Centres (ft)	Between Ellipses (ft)	Minimum Separation (ft)	Separation Factor	
0.00	0.00	0.00	0.00	0.00	0.00	-90.39	-0.11	-16.80	16.80				
100.00	100.00	100.00	100.00	0.10	0.10	-90.39	-0.11	-16.80	16.80	16.61	0.19	87.949	
200.00	200.00	200.00	200.00	0.32	0.32	-90.39	-0.11	-16.80	16.80	16.16	0.64	26.230	
300.00	300.00	300.00	300.00	0.55	0.55	-90.39	-0.11	-16.80	16.80	15.71	1.09	15.414	
400.00	400.00	400.00	400.00	0.77	0.77	-90.39	-0.11	-16.80	16.80	15.26	1.54	10.913	
500.00	500.00	500.00	500.00	0.99	0.99	-90.39	-0.11	-16.80	16.80	14.81	1.99	8.447	
600.00	600.00	600.00	600.00	1.22	1.22	-90.39	-0.11	-16.80	16.80	14.36	2.44	6.890	
700.00	700.00	700.00	700.00	1.44	1.44	-90.39	-0.11	-16.80	16.80	13.91	2.89	5.818	
800.00	800.00	800.00	800.00	1.67	1.67	-90.39	-0.11	-16.80	16.80	13.47	3.34	5.034	
900.00	900.00	900.00	900.00	1.89	1.89	-90.39	-0.11	-16.80	16.80	13.02	3.79	4.437	
1,000.00	1,000.00	1,000.00	1,000.00	2.12	2.12	-90.39	-0.11	-16.80	16.80	12.57	4.24	3.966	
1,100.00	1,100.00	1,100.00	1,100.00	2.34	2.34	-90.39	-0.11	-16.80	16.80	12.12	4.69	3.585	
1,200.00	1,200.00	1,200.00	1,200.00	2.57	2.57	-90.39	-0.11	-16.80	16.80	11.67	5.14	3.272	
1,250.00	1,250.00	1,250.00	1,250.00	2.68	2.68	-90.39	-0.11	-16.80	16.80	11.44	5.36	3.134 CC, ES	
1,300.00	1,300.00	1,299.77	1,299.77	2.78	2.79	96.16	0.18	-17.12	17.17	11.60	5.57	3.083 SF	
1,400.00	1,399.93	1,399.01	1,398.94	2.95	3.01	111.81	2.50	-19.66	20.97	15.02	5.95	3.524	
1,500.00	1,499.68	1,497.32	1,497.01	3.13	3.23	128.90	7.09	-24.67	31.27	24.93	6.34	4.936	
1,600.00	1,599.13	1,594.11	1,593.28	3.33	3.45	139.68	13.83	-32.02	48.93	42.21	6.72	7.284	
1,700.00	1,698.15	1,688.83	1,687.11	3.55	3.69	145.66	22.55	-41.53	73.46	66.36	7.10	10.347	
1,800.00	1,796.63	1,780.98	1,777.95	3.80	3.95	149.06	33.04	-52.98	104.34	96.86	7.48	13.946	
1,900.00	1,894.44	1,870.12	1,865.29	4.10	4.23	151.07	45.05	-66.10	141.19	133.33	7.87	17.950	
2,000.00	1,991.46	1,955.88	1,948.76	4.46	4.53	152.28	58.34	-80.60	183.69	175.44	8.25	22.257	
2,100.00	2,087.58	2,037.94	2,028.05	4.86	4.85	153.02	72.63	-96.19	231.54	222.89	8.64	26.783	
2,209.24	2,191.42	2,123.09	2,109.64	5.38	5.22	153.45	89.07	-114.14	289.56	280.48	9.08	31.891	
2,300.00	2,277.14	2,190.80	2,173.99	5.86	5.55	154.06	103.31	-129.68	341.00	331.48	9.52	35.829	
2,400.00	2,371.58	2,263.08	2,242.09	6.41	5.94	154.44	119.64	-147.50	399.58	389.56	10.02	39.891	
2,500.00	2,466.03	2,335.50	2,309.74	6.98	6.35	154.63	137.12	-166.58	459.98	449.44	10.53	43.678	
2,600.00	2,560.47	2,414.80	2,383.61	7.57	6.84	154.77	156.60	-187.83	520.89	509.81	11.08	47.015	
2,700.00	2,654.92	2,494.11	2,457.49	8.16	7.34	154.88	176.07	-209.09	581.80	570.16	11.64	49.984	
2,800.00	2,749.37	2,573.41	2,531.37	8.77	7.85	154.97	195.55	-230.34	642.71	630.50	12.21	52.624	
2,900.00	2,843.81	2,652.71	2,605.25	9.39	8.38	155.04	215.02	-251.60	703.63	690.83	12.80	54.989	
3,000.00	2,938.26	2,732.02	2,679.12	10.01	8.91	155.10	234.50	-272.85	764.54	751.16	13.39	57.116	
3,100.00	3,032.71	2,811.32	2,753.00	10.64	9.45	155.15	253.97	-294.11	825.46	811.48	13.98	59.033	
3,200.00	3,127.15	2,890.62	2,826.88	11.27	10.00	155.20	273.45	-315.36	886.37	871.79	14.59	60.764	
3,300.00	3,221.60	2,969.92	2,900.76	11.91	10.55	155.24	292.92	-336.62	947.29	932.09	15.20	62.331	
3,400.00	3,316.04	3,049.23	2,974.64	12.54	11.10	155.27	312.40	-357.87	1,008.21	992.39	15.81	63.759	
3,500.00	3,410.49	3,128.53	3,048.51	13.19	11.66	155.30	331.87	-379.13	1,069.12	1,052.69	16.43	65.064	
3,600.00	3,504.94	3,207.83	3,122.39	13.83	12.22	155.33	351.35	-400.38	1,130.04	1,112.99	17.05	66.259	
3,700.00	3,599.38	3,287.14	3,196.27	14.47	12.79	155.35	370.82	-421.64	1,190.96	1,173.28	17.68	67.354	
3,800.00	3,693.83	3,366.44	3,270.15	15.12	13.35	155.37	390.30	-442.89	1,251.88	1,233.56	18.31	68.362	
3,900.00	3,788.28	3,445.74	3,344.02	15.77	13.92	155.39	409.77	-464.14	1,312.79	1,293.85	18.95	69.293	
4,000.00	3,882.72	3,525.04	3,417.90	16.42	14.49	155.41	429.25	-485.40	1,373.71	1,354.13	19.58	70.155	
4,100.00	3,977.17	3,604.35	3,491.78	17.07	15.07	155.43	448.72	-506.65	1,434.63	1,414.41	20.22	70.954	
4,200.00	4,071.62	3,683.65	3,565.66	17.73	15.64	155.44	468.20	-527.91	1,495.55	1,474.69	20.86	71.697	
4,300.00	4,166.06	3,762.95	3,639.54	18.38	16.22	155.46	487.67	-549.16	1,556.46	1,534.96	21.50	72.388	
4,400.00	4,260.51	3,842.26	3,713.41	19.03	16.79	155.47	507.15	-570.42	1,617.38	1,595.23	22.15	73.034	
4,500.00	4,354.95	3,921.57	3,785.58	19.69	17.35	155.50	526.62	-591.67	1,678.29	1,655.01	22.80	73.700	
4,600.00	4,449.40	4,000.88	3,857.75	20.34	17.90	155.58	546.10	-612.92	1,739.20	1,715.71	23.45	74.366	
4,700.00	4,543.85	4,080.19	3,929.92	21.00	18.45	155.63	565.52	-634.15	1,799.11	1,774.62	24.10	75.032	
4,800.00	4,638.29	4,159.50	4,000.19	21.66	19.00	155.66	584.93	-655.38	1,859.02	1,833.53	24.75	75.698	
4,900.00	4,732.74	4,238.81	4,070.46	22.31	19.55	155.72	604.75	-676.61	1,918.93	1,892.44	25.40	76.364	
5,000.00	4,827.19	4,318.12	4,140.73	22.97	20.10	155.80	624.57	-697.34	1,978.84	1,951.35	26.05	77.030	

CC - Min centre to center distance or convergent point, SF - min separation factor, ES - min ellipse separation

<b>Company:</b>	US ROCKIES REGION PLANNING	<b>Local Co-ordinate Reference:</b>	Well P_DRY CREEK 22-27
<b>Project:</b>	COLORADO NOTHERN ZONE - 83	<b>TVD Reference:</b>	WELL @ 5023.00ft (Original Well Elev)
<b>Reference Site:</b>	WELD_DRY CREEK PAD 7	<b>MD Reference:</b>	WELL @ 5023.00ft (Original Well Elev)
<b>Site Error:</b>	0.00ft	<b>North Reference:</b>	Grid
<b>Reference Well:</b>	P_DRY CREEK 22-27	<b>Survey Calculation Method:</b>	Minimum Curvature
<b>Well Error:</b>	0.00ft	<b>Output errors are at</b>	2.00 sigma
<b>Reference Wellbore</b>	P_DRY CREEK 22-27	<b>Database:</b>	EDM 2003.21 Single User Db
<b>Reference Design:</b>	PLAN #1 10-26-09 RHS	<b>Offset TVD Reference:</b>	Offset Datum

Offset Design WELD_DRY CREEK PAD 7 - P_DRY CREEK 4-27 - P_DRY CREEK 4-27 - PLAN #1 10-26-09 RHS												Offset Site Error:	0.00 ft
Survey Program: 0-MWD												Offset Well Error:	0.00 ft
Reference		Offset		Semi Major Axis			Distance						Warning
Measured Depth (ft)	Vertical Depth (ft)	Measured Depth (ft)	Vertical Depth (ft)	Reference (ft)	Offset (ft)	Highside Toolface (°)	Offset Wellbore Centre +N/-S (ft)	+E/-W (ft)	Between Centres (ft)	Between Ellipses (ft)	Minimum Separation (ft)	Separation Factor	
5,100.00	4,921.63	5,077.99	4,921.63	23.63	20.89	158.36	650.67	-727.06	1,933.24	1,905.92	27.32	70.766	
5,200.00	5,016.08	5,172.44	5,016.08	24.29	21.00	158.71	650.67	-727.06	1,964.04	1,936.21	27.84	70.554	
5,300.00	5,110.53	5,266.88	5,110.53	24.95	21.10	159.05	650.67	-727.06	1,994.92	1,966.56	28.35	70.356	
5,400.00	5,204.97	5,361.33	5,204.97	25.61	21.21	159.38	650.67	-727.06	2,025.85	1,996.98	28.87	70.170	
5,500.00	5,299.42	5,455.78	5,299.42	26.27	21.32	159.70	650.67	-727.06	2,056.84	2,027.46	29.39	69.995	
5,573.23	5,368.58	5,524.94	5,368.58	26.75	21.40	159.93	650.67	-727.06	2,079.58	2,049.81	29.76	69.874	
5,600.00	5,393.91	5,550.26	5,393.91	26.90	21.43	160.07	650.67	-727.06	2,087.78	2,057.82	29.96	69.691	
5,700.00	5,489.19	5,645.55	5,489.19	27.35	21.54	160.55	650.67	-727.06	2,116.48	2,085.84	30.64	69.083	
5,800.00	5,585.48	5,741.84	5,585.48	27.76	21.66	160.96	650.67	-727.06	2,142.05	2,110.77	31.28	68.487	
5,900.00	5,682.65	5,839.01	5,682.65	28.13	21.78	161.31	650.67	-727.06	2,164.44	2,132.57	31.87	67.905	
6,000.00	5,780.59	5,936.95	5,780.59	28.47	21.90	161.60	650.67	-727.06	2,183.62	2,151.19	32.43	67.336	
6,100.00	5,879.17	6,035.53	5,879.17	28.76	22.03	161.84	650.67	-727.06	2,199.56	2,166.62	32.94	66.782	
6,200.00	5,978.27	6,134.63	5,978.27	29.01	22.15	162.03	650.67	-727.06	2,212.23	2,178.83	33.40	66.241	
6,300.00	6,077.78	6,234.14	6,077.78	29.21	22.28	162.16	650.67	-727.06	2,221.60	2,187.79	33.81	65.712	
6,400.00	6,177.57	6,333.93	6,177.57	29.38	22.41	162.25	650.67	-727.06	2,227.66	2,193.49	34.17	65.193	
6,500.00	6,277.53	6,433.89	6,277.53	29.50	22.54	162.29	650.67	-727.06	2,230.40	2,195.92	34.48	64.682	
6,532.47	6,310.00	6,466.36	6,310.00	29.53	22.59	-21.83	650.67	-727.06	2,230.58	2,196.00	34.58	64.513	
6,600.00	6,377.53	6,533.89	6,377.53	29.59	22.68	-21.83	650.67	-727.06	2,230.58	2,195.78	34.80	64.103	
6,700.00	6,477.53	6,633.89	6,477.53	29.68	22.81	-21.83	650.67	-727.06	2,230.58	2,195.46	35.12	63.517	
6,800.00	6,577.53	6,733.89	6,577.53	29.76	22.95	-21.83	650.67	-727.06	2,230.58	2,195.14	35.44	62.937	
6,900.00	6,677.53	6,833.89	6,677.53	29.85	23.08	-21.83	650.67	-727.06	2,230.58	2,194.81	35.77	62.363	
7,000.00	6,777.53	6,933.89	6,777.53	29.94	23.22	-21.83	650.67	-727.06	2,230.58	2,194.48	36.10	61.795	
7,100.00	6,877.53	7,033.89	6,877.53	30.03	23.36	-21.83	650.67	-727.06	2,230.58	2,194.15	36.43	61.233	
7,200.00	6,977.53	7,133.89	6,977.53	30.12	23.50	-21.83	650.67	-727.06	2,230.58	2,193.82	36.76	60.677	
7,300.00	7,077.53	7,233.89	7,077.53	30.21	23.65	-21.83	650.67	-727.06	2,230.58	2,193.48	37.10	60.127	
7,400.00	7,177.53	7,333.89	7,177.53	30.31	23.79	-21.83	650.67	-727.06	2,230.58	2,193.14	37.44	59.583	
7,500.00	7,277.53	7,433.89	7,277.53	30.40	23.94	-21.83	650.67	-727.06	2,230.58	2,192.80	37.78	59.045	
7,600.00	7,377.53	7,533.89	7,377.53	30.50	24.08	-21.83	650.67	-727.06	2,230.58	2,192.46	38.12	58.514	
7,700.00	7,477.53	7,633.89	7,477.53	30.60	24.23	-21.83	650.67	-727.06	2,230.58	2,192.11	38.47	57.988	
7,800.00	7,577.53	7,733.89	7,577.53	30.70	24.38	-21.83	650.67	-727.06	2,230.58	2,191.76	38.81	57.470	
7,900.00	7,677.53	7,833.89	7,677.53	30.80	24.53	-21.83	650.67	-727.06	2,230.58	2,191.41	39.16	56.957	
8,000.00	7,777.53	7,933.89	7,777.53	30.90	24.68	-21.83	650.67	-727.06	2,230.58	2,191.06	39.51	56.450	
8,100.00	7,877.53	8,033.89	7,877.53	31.00	24.83	-21.83	650.67	-727.06	2,230.58	2,190.71	39.87	55.950	
8,200.00	7,977.53	8,065.36	7,909.00	31.11	24.88	-21.83	650.67	-727.06	2,231.63	2,191.54	40.09	55.665	
8,300.00	8,077.53	8,065.36	7,909.00	31.22	24.88	-21.83	650.67	-727.06	2,236.93	2,196.68	40.25	55.570	
8,400.00	8,177.53	8,065.36	7,909.00	31.32	24.88	-21.83	650.67	-727.06	2,246.68	2,206.26	40.42	55.584	
8,504.47	8,282.00	8,065.36	7,909.00	31.44	24.88	-21.83	650.67	-727.06	2,261.55	2,220.96	40.59	55.712	

<b>Company:</b>	US ROCKIES REGION PLANNING	<b>Local Co-ordinate Reference:</b>	Well P_DRY CREEK 22-27
<b>Project:</b>	COLORADO NOTHERN ZONE - 83	<b>TVD Reference:</b>	WELL @ 5023.00ft (Original Well Elev)
<b>Reference Site:</b>	WELD_DRY CREEK PAD 7	<b>MD Reference:</b>	WELL @ 5023.00ft (Original Well Elev)
<b>Site Error:</b>	0.00ft	<b>North Reference:</b>	Grid
<b>Reference Well:</b>	P_DRY CREEK 22-27	<b>Survey Calculation Method:</b>	Minimum Curvature
<b>Well Error:</b>	0.00ft	<b>Output errors are at</b>	2.00 sigma
<b>Reference Wellbore</b>	P_DRY CREEK 22-27	<b>Database:</b>	EDM 2003.21 Single User Db
<b>Reference Design:</b>	PLAN #1 10-26-09 RHS	<b>Offset TVD Reference:</b>	Offset Datum

Offset Design WELD_DRY CREEK PAD 7 - P_DRY CREEK 5-27 - P_DRY CREEK 5-27 - PLAN #1 10-26-09 RHS												Offset Site Error:	0.00 ft
Survey Program: 0-MWD												Offset Well Error:	0.00 ft
Reference	Offset	Semi Major Axis		Distance		Warning							
Measured Depth (ft)	Vertical Depth (ft)	Measured Depth (ft)	Vertical Depth (ft)	Reference (ft)	Offset (ft)	Highside Toolface (°)	Offset Wellbore Centre +N/-S (ft)	+E/-W (ft)	Between Centres (ft)	Between Ellipses (ft)	Minimum Separation (ft)	Separation Factor	
0.00	0.00	0.00	0.00	0.00	0.00	-90.41	-0.22	-30.80	30.81				
100.00	100.00	100.00	100.00	0.10	0.10	-90.41	-0.22	-30.80	30.81	30.61	0.19	161.240	
200.00	200.00	200.00	200.00	0.32	0.32	-90.41	-0.22	-30.80	30.81	30.16	0.64	48.089	
300.00	300.00	300.00	300.00	0.55	0.55	-90.41	-0.22	-30.80	30.81	29.72	1.09	28.259	
400.00	400.00	400.00	400.00	0.77	0.77	-90.41	-0.22	-30.80	30.81	29.27	1.54	20.008	
500.00	500.00	500.00	500.00	0.99	0.99	-90.41	-0.22	-30.80	30.81	28.82	1.99	15.486	
600.00	600.00	600.00	600.00	1.22	1.22	-90.41	-0.22	-30.80	30.81	28.37	2.44	12.632	
700.00	700.00	700.00	700.00	1.44	1.44	-90.41	-0.22	-30.80	30.81	27.92	2.89	10.666	
800.00	800.00	800.00	800.00	1.67	1.67	-90.41	-0.22	-30.80	30.81	27.47	3.34	9.229	
900.00	900.00	900.00	900.00	1.89	1.89	-90.41	-0.22	-30.80	30.81	27.02	3.79	8.134	
1,000.00	1,000.00	1,000.00	1,000.00	2.12	2.12	-90.41	-0.22	-30.80	30.81	26.57	4.24	7.271	
1,100.00	1,100.00	1,100.00	1,100.00	2.34	2.34	-90.41	-0.22	-30.80	30.81	26.12	4.69	6.573	
1,200.00	1,200.00	1,200.00	1,200.00	2.57	2.57	-90.41	-0.22	-30.80	30.81	25.67	5.14	5.998	
1,250.00	1,250.00	1,250.00	1,250.00	2.68	2.68	-90.41	-0.22	-30.80	30.81	25.44	5.36	5.747 CC, ES	
1,300.00	1,300.00	1,299.70	1,299.70	2.78	2.78	93.84	-0.58	-31.04	31.07	25.52	5.56	5.592 SF	
1,400.00	1,399.93	1,399.08	1,399.01	2.95	2.95	94.80	-3.47	-32.91	33.21	27.31	5.90	5.629	
1,500.00	1,499.68	1,498.34	1,498.03	3.13	3.14	96.37	-9.24	-36.66	37.51	31.25	6.26	5.990	
1,600.00	1,599.13	1,597.43	1,596.58	3.33	3.34	98.13	-17.87	-42.25	44.00	37.34	6.66	6.611	
1,700.00	1,698.15	1,696.26	1,694.46	3.55	3.56	99.77	-29.32	-49.68	52.67	45.58	7.09	7.425	
1,800.00	1,796.63	1,794.78	1,791.51	3.80	3.82	101.16	-43.55	-58.91	63.53	55.94	7.59	8.366	
1,900.00	1,894.44	1,892.92	1,887.54	4.10	4.12	102.26	-60.49	-69.90	76.56	68.38	8.17	9.367	
2,000.00	1,991.46	1,990.62	1,982.40	4.46	4.46	103.10	-80.09	-82.61	91.72	82.87	8.85	10.369	
2,100.00	2,087.58	2,087.81	2,075.92	4.86	4.86	103.72	-102.27	-96.99	108.99	99.37	9.62	11.325	
2,209.24	2,191.42	2,193.36	2,176.40	5.38	5.36	104.19	-129.36	-114.56	130.23	119.63	10.60	12.284	
2,300.00	2,277.14	2,280.56	2,258.48	5.86	5.83	104.30	-154.07	-130.58	149.37	137.85	11.52	12.966	
2,400.00	2,371.58	2,376.11	2,347.33	6.41	6.40	103.42	-183.53	-149.69	171.59	158.99	12.60	13.617	
2,500.00	2,466.03	2,473.39	2,437.20	6.98	7.03	102.27	-214.79	-169.96	194.45	180.70	13.75	14.137	
2,600.00	2,560.47	2,570.68	2,527.08	7.57	7.68	101.37	-246.04	-190.23	217.37	202.43	14.94	14.552	
2,700.00	2,654.92	2,667.97	2,616.95	8.16	8.35	100.64	-277.29	-210.50	240.34	224.19	16.14	14.886	
2,800.00	2,749.37	2,765.25	2,706.82	8.77	9.03	100.03	-308.54	-230.77	263.33	245.96	17.37	15.158	
2,900.00	2,843.81	2,862.54	2,796.69	9.39	9.72	99.53	-339.79	-251.04	286.35	267.73	18.61	15.383	
3,000.00	2,938.26	2,959.82	2,886.57	10.01	10.42	99.09	-371.05	-271.30	309.38	289.51	19.87	15.571	
3,100.00	3,032.71	3,057.11	2,976.44	10.64	11.13	98.72	-402.30	-291.57	332.43	311.30	21.13	15.730	
3,200.00	3,127.15	3,154.40	3,066.31	11.27	11.84	98.40	-433.55	-311.84	355.49	333.08	22.41	15.865	
3,300.00	3,221.60	3,251.68	3,156.18	11.91	12.56	98.11	-464.80	-332.11	378.56	354.87	23.69	15.982	
3,400.00	3,316.04	3,348.97	3,246.06	12.54	13.28	97.86	-496.06	-352.38	401.64	376.67	24.97	16.083	
3,500.00	3,410.49	3,446.26	3,335.93	13.19	14.00	97.64	-527.31	-372.65	424.72	398.46	26.26	16.172	
3,600.00	3,504.94	3,543.54	3,425.80	13.83	14.73	97.44	-558.56	-392.91	447.81	420.26	27.56	16.250	
3,700.00	3,599.38	3,640.83	3,515.68	14.47	15.46	97.26	-589.81	-413.18	470.91	442.05	28.86	16.319	
3,800.00	3,693.83	3,738.12	3,605.55	15.12	16.19	97.09	-621.06	-433.45	494.01	463.85	30.16	16.381	
3,900.00	3,788.28	3,840.93	3,700.81	15.77	16.85	97.01	-653.51	-454.49	516.79	485.39	31.40	16.456	
4,000.00	3,882.72	3,947.80	3,801.14	16.42	17.40	97.28	-684.38	-474.51	538.01	505.42	32.59	16.509	
4,100.00	3,977.17	4,055.17	3,903.25	17.07	17.92	97.91	-712.20	-492.56	557.55	523.79	33.77	16.511	
4,200.00	4,071.62	4,162.74	4,006.73	17.73	18.40	98.85	-736.84	-508.54	575.52	540.59	34.93	16.477	
4,300.00	4,166.06	4,270.20	4,111.13	18.38	18.84	100.08	-758.18	-522.38	592.03	555.97	36.06	16.419	
4,400.00	4,260.51	4,377.26	4,216.02	19.03	19.22	101.59	-776.16	-534.04	607.26	570.12	37.14	16.349	
4,500.00	4,354.95	4,483.62	4,320.93	19.69	19.56	103.34	-790.76	-543.51	621.45	583.28	38.17	16.280	
4,600.00	4,449.40	4,588.99	4,425.45	20.34	19.83	105.32	-801.99	-550.79	634.86	595.73	39.13	16.226	
4,700.00	4,543.85	4,693.12	4,529.14	21.00	20.06	107.51	-809.91	-555.93	647.77	607.78	39.99	16.198	
4,800.00	4,638.29	4,795.74	4,631.61	21.66	20.23	109.87	-814.62	-558.98	660.54	619.79	40.75	16.208	
4,900.00	4,732.74	4,896.65	4,732.49	22.31	20.36	112.40	-816.24	-560.03	673.50	632.10	41.40	16.267	
5,000.00	4,827.19	4,991.34	4,827.19	22.97	20.46	114.82	-816.24	-560.04	687.31	645.35	41.96	16.379	

CC - Min centre to center distance or convergent point, SF - min separation factor, ES - min ellipse separation

<b>Company:</b>	US ROCKIES REGION PLANNING	<b>Local Co-ordinate Reference:</b>	Well P_DRY CREEK 22-27
<b>Project:</b>	COLORADO NOTHERN ZONE - 83	<b>TVD Reference:</b>	WELL @ 5023.00ft (Original Well Elev)
<b>Reference Site:</b>	WELD_DRY CREEK PAD 7	<b>MD Reference:</b>	WELL @ 5023.00ft (Original Well Elev)
<b>Site Error:</b>	0.00ft	<b>North Reference:</b>	Grid
<b>Reference Well:</b>	P_DRY CREEK 22-27	<b>Survey Calculation Method:</b>	Minimum Curvature
<b>Well Error:</b>	0.00ft	<b>Output errors are at</b>	2.00 sigma
<b>Reference Wellbore</b>	P_DRY CREEK 22-27	<b>Database:</b>	EDM 2003.21 Single User Db
<b>Reference Design:</b>	PLAN #1 10-26-09 RHS	<b>Offset TVD Reference:</b>	Offset Datum

Offset Design WELD_DRY CREEK PAD 7 - P_DRY CREEK 5-27 - P_DRY CREEK 5-27 - PLAN #1 10-26-09 RHS												Offset Site Error:	0.00 ft
Survey Program: 0-MWD												Offset Well Error:	0.00 ft
Reference		Offset		Semi Major Axis			Distance						Warning
Measured Depth (ft)	Vertical Depth (ft)	Measured Depth (ft)	Vertical Depth (ft)	Reference (ft)	Offset (ft)	Highside Toolface (°)	Offset Wellbore Centre +N/-S (ft)	+E/-W (ft)	Between Centres (ft)	Between Ellipses (ft)	Minimum Separation (ft)	Separation Factor	
5,100.00	4,921.63	5,085.79	4,921.63	23.63	20.55	117.15	-816.24	-560.04	702.38	659.92	42.46	16.541	
5,200.00	5,016.08	5,180.24	5,016.08	24.29	20.65	119.39	-816.24	-560.04	718.64	675.74	42.91	16.748	
5,300.00	5,110.53	5,274.68	5,110.53	24.95	20.75	121.53	-816.24	-560.04	736.01	692.71	43.31	16.994	
5,400.00	5,204.97	5,369.13	5,204.97	25.61	20.85	123.57	-816.24	-560.04	754.42	710.75	43.67	17.276	
5,500.00	5,299.42	5,463.58	5,299.42	26.27	20.95	125.53	-816.24	-560.04	773.78	729.79	43.99	17.589	
5,573.23	5,368.58	5,532.74	5,368.58	26.75	21.03	126.90	-816.24	-560.04	788.52	744.31	44.21	17.836	
5,600.00	5,393.91	5,558.06	5,393.91	26.90	21.05	127.47	-816.24	-560.04	793.95	749.68	44.27	17.933	
5,700.00	5,489.19	5,653.35	5,489.19	27.35	21.16	129.43	-816.24	-560.04	813.36	768.93	44.43	18.306	
5,800.00	5,585.48	5,749.64	5,585.48	27.76	21.27	131.10	-816.24	-560.04	831.18	786.60	44.58	18.644	
5,900.00	5,682.65	5,846.81	5,682.65	28.13	21.38	132.53	-816.24	-560.04	847.17	802.44	44.73	18.940	
6,000.00	5,780.59	5,944.74	5,780.59	28.47	21.50	133.71	-816.24	-560.04	861.12	816.25	44.88	19.189	
6,100.00	5,879.17	6,043.33	5,879.17	28.76	21.61	134.67	-816.24	-560.04	872.89	827.86	45.03	19.386	
6,200.00	5,978.27	6,142.43	5,978.27	29.01	21.73	135.42	-816.24	-560.04	882.35	837.17	45.18	19.529	
6,300.00	6,077.78	6,241.94	6,077.78	29.21	21.85	135.96	-816.24	-560.04	889.41	844.08	45.34	19.617	
6,400.00	6,177.57	6,341.73	6,177.57	29.38	21.98	136.30	-816.24	-560.04	894.01	848.51	45.50	19.648	
6,500.00	6,277.53	6,441.69	6,277.53	29.50	22.10	136.46	-816.24	-560.04	896.09	850.42	45.67	19.621	
6,532.47	6,310.00	6,474.16	6,310.00	29.53	22.14	-47.65	-816.24	-560.04	896.23	850.50	45.73	19.598	
6,600.00	6,377.53	6,541.68	6,377.53	29.59	22.23	-47.65	-816.24	-560.04	896.23	850.33	45.89	19.528	
6,700.00	6,477.53	6,641.68	6,477.53	29.68	22.36	-47.65	-816.24	-560.04	896.23	850.10	46.13	19.428	
6,800.00	6,577.53	6,741.68	6,577.53	29.76	22.48	-47.65	-816.24	-560.04	896.23	849.86	46.37	19.328	
6,900.00	6,677.53	6,841.68	6,677.53	29.85	22.62	-47.65	-816.24	-560.04	896.23	849.61	46.61	19.227	
7,000.00	6,777.53	6,941.68	6,777.53	29.94	22.75	-47.65	-816.24	-560.04	896.23	849.37	46.86	19.127	
7,100.00	6,877.53	7,041.68	6,877.53	30.03	22.88	-47.65	-816.24	-560.04	896.23	849.12	47.11	19.026	
7,200.00	6,977.53	7,141.68	6,977.53	30.12	23.02	-47.65	-816.24	-560.04	896.23	848.87	47.36	18.925	
7,300.00	7,077.53	7,241.68	7,077.53	30.21	23.15	-47.65	-816.24	-560.04	896.23	848.61	47.61	18.824	
7,400.00	7,177.53	7,341.68	7,177.53	30.31	23.29	-47.65	-816.24	-560.04	896.23	848.36	47.87	18.723	
7,500.00	7,277.53	7,441.68	7,277.53	30.40	23.43	-47.65	-816.24	-560.04	896.23	848.10	48.13	18.622	
7,600.00	7,377.53	7,541.68	7,377.53	30.50	23.57	-47.65	-816.24	-560.04	896.23	847.83	48.39	18.521	
7,700.00	7,477.53	7,641.68	7,477.53	30.60	23.72	-47.65	-816.24	-560.04	896.23	847.57	48.66	18.420	
7,800.00	7,577.53	7,741.68	7,577.53	30.70	23.86	-47.65	-816.24	-560.04	896.23	847.30	48.92	18.319	
7,900.00	7,677.53	7,841.68	7,677.53	30.80	24.00	-47.65	-816.24	-560.04	896.23	847.03	49.20	18.218	
8,000.00	7,777.53	7,941.68	7,777.53	30.90	24.15	-47.65	-816.24	-560.04	896.23	846.76	49.47	18.117	
8,100.00	7,877.53	8,041.68	7,877.53	31.00	24.30	-47.65	-816.24	-560.04	896.23	846.48	49.74	18.017	
8,200.00	7,977.53	8,043.16	7,879.00	31.11	24.30	-47.65	-816.24	-560.04	901.63	851.75	49.88	18.078	
8,300.00	8,077.53	8,043.16	7,879.00	31.22	24.30	-47.65	-816.24	-560.04	917.95	867.95	50.01	18.357	
8,400.00	8,177.53	8,043.16	7,879.00	31.32	24.30	-47.65	-816.24	-560.04	944.64	894.50	50.14	18.841	
8,504.47	8,282.00	8,043.16	7,879.00	31.44	24.30	-47.65	-816.24	-560.04	982.66	932.39	50.28	19.546	

<b>Company:</b>	US ROCKIES REGION PLANNING	<b>Local Co-ordinate Reference:</b>	Well P_DRY CREEK 22-27
<b>Project:</b>	COLORADO NOTHERN ZONE - 83	<b>TVD Reference:</b>	WELL @ 5023.00ft (Original Well Elev)
<b>Reference Site:</b>	WELD_DRY CREEK PAD 7	<b>MD Reference:</b>	WELL @ 5023.00ft (Original Well Elev)
<b>Site Error:</b>	0.00ft	<b>North Reference:</b>	Grid
<b>Reference Well:</b>	P_DRY CREEK 22-27	<b>Survey Calculation Method:</b>	Minimum Curvature
<b>Well Error:</b>	0.00ft	<b>Output errors are at</b>	2.00 sigma
<b>Reference Wellbore</b>	P_DRY CREEK 22-27	<b>Database:</b>	EDM 2003.21 Single User Db
<b>Reference Design:</b>	PLAN #1 10-26-09 RHS	<b>Offset TVD Reference:</b>	Offset Datum

Offset Design WELD_DRY CREEK PAD 7 - P_DRY CREEK 6-27 - P_DRY CREEK 6-27 - PLAN #1 10-26-09 RHS												Offset Site Error:	0.00 ft
Survey Program: 0-MWD												Offset Well Error:	0.00 ft
Reference	Offset	Semi Major Axis		Distance		Warning							
Measured Depth (ft)	Vertical Depth (ft)	Measured Depth (ft)	Vertical Depth (ft)	Reference (ft)	Offset (ft)	Highside Toolface (°)	Offset Wellbore Centre +N/-S (ft)	+E/-W (ft)	Between Centres (ft)	Between Ellipses (ft)	Minimum Separation (ft)	Separation Factor	
0.00	0.00	0.00	0.00	0.00	0.00	89.59	0.12	16.80	16.80				
100.00	100.00	100.00	100.00	0.10	0.10	89.59	0.12	16.80	16.80	16.61	0.19	87.949	
200.00	200.00	200.00	200.00	0.32	0.32	89.59	0.12	16.80	16.80	16.16	0.64	26.230	
300.00	300.00	300.00	300.00	0.55	0.55	89.59	0.12	16.80	16.80	15.71	1.09	15.414	
400.00	400.00	400.00	400.00	0.77	0.77	89.59	0.12	16.80	16.80	15.26	1.54	10.913	
500.00	500.00	500.00	500.00	0.99	0.99	89.59	0.12	16.80	16.80	14.81	1.99	8.447	
600.00	600.00	600.00	600.00	1.22	1.22	89.59	0.12	16.80	16.80	14.36	2.44	6.890	
700.00	700.00	700.00	700.00	1.44	1.44	89.59	0.12	16.80	16.80	13.91	2.89	5.818	
800.00	800.00	800.00	800.00	1.67	1.67	89.59	0.12	16.80	16.80	13.47	3.34	5.034	
900.00	900.00	900.00	900.00	1.89	1.89	89.59	0.12	16.80	16.80	13.02	3.79	4.437	
1,000.00	1,000.00	1,000.00	1,000.00	2.12	2.12	89.59	0.12	16.80	16.80	12.57	4.24	3.966	
1,100.00	1,100.00	1,100.00	1,100.00	2.34	2.34	89.59	0.12	16.80	16.80	12.12	4.69	3.585	
1,200.00	1,200.00	1,200.00	1,200.00	2.57	2.57	89.59	0.12	16.80	16.80	11.67	5.14	3.272	
1,250.00	1,250.00	1,250.00	1,250.00	2.68	2.68	89.59	0.12	16.80	16.80	11.44	5.36	3.134 CC, ES	
1,300.00	1,300.00	1,299.80	1,299.80	2.78	2.78	-86.67	-0.20	17.10	17.07	11.51	5.56	3.071 SF	
1,400.00	1,399.93	1,399.37	1,399.30	2.95	2.96	-89.30	-2.74	19.44	19.21	13.30	5.91	3.253	
1,500.00	1,499.68	1,498.81	1,498.50	3.13	3.15	-93.09	-7.81	24.13	23.58	17.30	6.27	3.759	
1,600.00	1,599.13	1,598.06	1,597.21	3.33	3.36	-96.67	-15.39	31.13	30.24	23.57	6.67	4.535	
1,700.00	1,698.15	1,697.04	1,695.23	3.55	3.59	-99.50	-25.45	40.42	39.22	32.11	7.11	5.517	
1,800.00	1,796.63	1,795.68	1,792.39	3.80	3.85	-101.56	-37.94	50.51	50.51	42.89	7.61	6.634	
1,900.00	1,894.44	1,893.90	1,888.49	4.10	4.15	-103.02	-52.81	65.70	64.05	55.86	8.20	7.816	
2,000.00	1,991.46	1,991.64	1,983.39	4.46	4.51	-104.04	-70.01	81.58	79.83	70.96	8.87	9.000	
2,100.00	2,087.58	2,088.84	2,076.90	4.86	4.91	-104.74	-89.45	99.54	97.80	88.15	9.65	10.136	
2,209.24	2,191.42	2,194.33	2,177.32	5.38	5.43	-105.23	-113.18	121.45	119.89	109.26	10.63	11.282	
2,300.00	2,277.14	2,281.45	2,259.31	5.86	5.91	-105.31	-134.81	141.43	139.79	128.24	11.55	12.104	
2,400.00	2,371.58	2,376.86	2,348.02	6.41	6.50	-104.36	-160.59	165.25	162.86	150.21	12.64	12.880	
2,500.00	2,466.03	2,471.46	2,434.78	6.98	7.16	-102.72	-188.28	190.82	187.23	173.42	13.81	13.558	
2,600.00	2,560.47	2,565.05	2,519.35	7.57	7.88	-100.70	-217.73	218.03	213.09	198.06	15.03	14.178	
2,700.00	2,654.92	2,658.18	2,602.18	8.16	8.65	-98.45	-249.00	246.90	240.58	224.30	16.28	14.774	
2,800.00	2,749.37	2,753.71	2,686.70	8.77	9.48	-96.42	-281.71	277.12	268.85	251.27	17.58	15.292	
2,900.00	2,843.81	2,849.23	2,771.21	9.39	10.33	-94.78	-314.43	307.34	297.38	278.50	18.88	15.749	
3,000.00	2,938.26	2,944.76	2,855.72	10.01	11.19	-93.42	-347.14	337.55	326.09	305.90	20.19	16.151	
3,100.00	3,032.71	3,040.29	2,940.23	10.64	12.07	-92.28	-379.85	367.77	354.95	333.44	21.50	16.508	
3,200.00	3,127.15	3,135.82	3,024.74	11.27	12.95	-91.32	-412.57	397.98	383.91	361.09	22.82	16.825	
3,300.00	3,221.60	3,231.34	3,109.25	11.91	13.84	-90.49	-445.28	428.20	412.96	388.82	24.14	17.108	
3,400.00	3,316.04	3,326.87	3,193.77	12.54	14.73	-89.76	-477.99	458.42	442.08	416.62	25.46	17.363	
3,500.00	3,410.49	3,422.40	3,278.28	13.19	15.63	-89.13	-510.71	488.63	471.25	444.47	26.79	17.593	
3,600.00	3,504.94	3,517.92	3,362.79	13.83	16.53	-88.57	-543.42	518.85	500.48	472.36	28.11	17.801	
3,700.00	3,599.38	3,619.23	3,452.62	14.47	17.42	-88.08	-577.82	550.62	529.49	500.06	29.43	17.991	
3,800.00	3,693.83	3,728.22	3,550.83	15.12	18.19	-87.91	-612.51	582.67	556.60	525.90	30.71	18.127	
3,900.00	3,788.28	3,838.59	3,652.06	15.77	18.92	-88.10	-644.83	612.51	581.43	549.43	32.00	18.169	
4,000.00	3,882.72	3,950.04	3,755.91	16.42	19.61	-88.59	-674.52	639.94	603.97	570.66	33.31	18.132	
4,100.00	3,977.17	4,062.25	3,861.98	17.07	20.24	-89.38	-701.40	664.77	624.25	589.63	34.62	18.030	
4,200.00	4,071.62	4,174.87	3,969.79	17.73	20.82	-90.44	-725.29	686.83	642.34	606.41	35.93	17.877	
4,300.00	4,166.06	4,287.56	4,078.87	18.38	21.34	-91.74	-746.06	706.02	658.39	621.16	37.22	17.687	
4,400.00	4,260.51	4,399.98	4,188.71	19.03	21.79	-93.29	-763.62	722.24	672.54	634.05	38.49	17.473	
4,500.00	4,354.95	4,511.77	4,298.78	19.69	22.16	-95.06	-777.94	735.46	685.03	645.32	39.71	17.251	
4,600.00	4,449.40	4,622.61	4,408.58	20.34	22.48	-97.05	-789.00	745.68	696.10	655.22	40.87	17.031	
4,700.00	4,543.85	4,732.18	4,517.62	21.00	22.72	-99.24	-796.87	752.95	706.05	664.08	41.97	16.824	
4,800.00	4,638.29	4,840.19	4,625.43	21.66	22.91	-101.63	-801.62	757.33	715.21	672.23	42.97	16.643	
4,900.00	4,732.74	4,946.37	4,731.59	22.31	23.04	-104.18	-803.37	758.96	723.95	680.07	43.88	16.497	
5,000.00	4,827.19	5,041.97	4,827.19	22.97	23.12	-106.57	-803.39	758.97	733.15	688.47	44.68	16.409	

CC - Min centre to center distance or convergent point, SF - min separation factor, ES - min ellipse separation

<b>Company:</b>	US ROCKIES REGION PLANNING	<b>Local Co-ordinate Reference:</b>	Well P_DRY CREEK 22-27
<b>Project:</b>	COLORADO NOTHERN ZONE - 83	<b>TVD Reference:</b>	WELL @ 5023.00ft (Original Well Elev)
<b>Reference Site:</b>	WELD_DRY CREEK PAD 7	<b>MD Reference:</b>	WELL @ 5023.00ft (Original Well Elev)
<b>Site Error:</b>	0.00ft	<b>North Reference:</b>	Grid
<b>Reference Well:</b>	P_DRY CREEK 22-27	<b>Survey Calculation Method:</b>	Minimum Curvature
<b>Well Error:</b>	0.00ft	<b>Output errors are at</b>	2.00 sigma
<b>Reference Wellbore</b>	P_DRY CREEK 22-27	<b>Database:</b>	EDM 2003.21 Single User Db
<b>Reference Design:</b>	PLAN #1 10-26-09 RHS	<b>Offset TVD Reference:</b>	Offset Datum

Offset Design WELD_DRY CREEK PAD 7 - P_DRY CREEK 6-27 - P_DRY CREEK 6-27 - PLAN #1 10-26-09 RHS												Offset Site Error:	0.00 ft
Survey Program: 0-MWD												Offset Well Error:	0.00 ft
Reference		Offset		Semi Major Axis			Distance						
Measured Depth (ft)	Vertical Depth (ft)	Measured Depth (ft)	Vertical Depth (ft)	Reference (ft)	Offset (ft)	Highside Toolface (°)	Offset Wellbore Centre +N/-S (ft)	+E/-W (ft)	Between Centres (ft)	Between Ellipses (ft)	Minimum Separation (ft)	Separation Factor	Warning
5,100.00	4,921.63	5,136.42	4,921.63	23.63	23.21	-108.88	-803.39	758.97	743.69	698.28	45.41	16.378	
5,200.00	5,016.08	5,230.87	5,016.08	24.29	23.30	-111.12	-803.39	758.97	755.51	709.43	46.08	16.397	
5,300.00	5,110.53	5,325.31	5,110.53	24.95	23.39	-113.30	-803.39	758.97	768.55	721.87	46.68	16.463	
5,400.00	5,204.97	5,419.76	5,204.97	25.61	23.49	-115.41	-803.39	758.97	782.76	735.53	47.24	16.571	
5,500.00	5,299.42	5,514.20	5,299.42	26.27	23.58	-117.45	-803.39	758.97	798.07	750.33	47.74	16.718	
5,573.23	5,368.58	5,583.37	5,368.58	26.75	23.65	-118.90	-803.39	758.97	809.94	761.87	48.07	16.848	
5,600.00	5,393.91	5,608.69	5,393.91	26.90	23.68	-119.49	-803.39	758.97	814.36	766.17	48.18	16.901	
5,700.00	5,489.19	5,703.98	5,489.19	27.35	23.77	-121.52	-803.39	758.97	830.30	781.81	48.49	17.122	
5,800.00	5,585.48	5,800.27	5,585.48	27.76	23.87	-123.29	-803.39	758.97	845.15	796.39	48.77	17.331	
5,900.00	5,682.65	5,897.44	5,682.65	28.13	23.98	-124.81	-803.39	758.97	858.63	809.61	49.01	17.518	
6,000.00	5,780.59	5,995.37	5,780.59	28.47	24.08	-126.08	-803.39	758.97	870.50	821.26	49.24	17.677	
6,100.00	5,879.17	6,093.95	5,879.17	28.76	24.19	-127.11	-803.39	758.97	880.59	831.13	49.46	17.805	
6,200.00	5,978.27	6,193.06	5,978.27	29.01	24.30	-127.92	-803.39	758.97	888.74	839.08	49.66	17.896	
6,300.00	6,077.78	6,292.57	6,077.78	29.21	24.41	-128.52	-803.39	758.97	894.85	844.99	49.86	17.949	
6,400.00	6,177.57	6,392.36	6,177.57	29.38	24.53	-128.90	-803.39	758.97	898.83	848.79	50.04	17.961	
6,500.00	6,277.53	6,492.31	6,277.53	29.50	24.64	-129.07	-803.39	758.97	900.64	850.42	50.23	17.931	
6,532.47	6,310.00	6,524.79	6,310.00	29.53	24.68	46.80	-803.39	758.97	900.76	850.47	50.29	17.911	
6,600.00	6,377.53	6,592.31	6,377.53	29.59	24.76	46.80	-803.39	758.97	900.76	850.32	50.44	17.857	
6,700.00	6,477.53	6,692.31	6,477.53	29.68	24.88	46.80	-803.39	758.97	900.76	850.10	50.66	17.779	
6,800.00	6,577.53	6,792.31	6,577.53	29.76	25.00	46.80	-803.39	758.97	900.76	849.87	50.89	17.701	
6,900.00	6,677.53	6,892.31	6,677.53	29.85	25.12	46.80	-803.39	758.97	900.76	849.65	51.11	17.623	
7,000.00	6,777.53	6,992.31	6,777.53	29.94	25.24	46.80	-803.39	758.97	900.76	849.42	51.34	17.545	
7,100.00	6,877.53	7,092.31	6,877.53	30.03	25.37	46.80	-803.39	758.97	900.76	849.19	51.57	17.466	
7,200.00	6,977.53	7,192.31	6,977.53	30.12	25.49	46.80	-803.39	758.97	900.76	848.95	51.81	17.387	
7,300.00	7,077.53	7,292.31	7,077.53	30.21	25.62	46.80	-803.39	758.97	900.76	848.72	52.05	17.307	
7,400.00	7,177.53	7,392.31	7,177.53	30.31	25.75	46.80	-803.39	758.97	900.76	848.47	52.29	17.228	
7,500.00	7,277.53	7,492.31	7,277.53	30.40	25.88	46.80	-803.39	758.97	900.76	848.23	52.53	17.148	
7,600.00	7,377.53	7,592.31	7,377.53	30.50	26.01	46.80	-803.39	758.97	900.76	847.99	52.78	17.068	
7,700.00	7,477.53	7,692.31	7,477.53	30.60	26.14	46.80	-803.39	758.97	900.76	847.74	53.02	16.988	
7,800.00	7,577.53	7,792.31	7,577.53	30.70	26.27	46.80	-803.39	758.97	900.76	847.49	53.28	16.908	
7,900.00	7,677.53	7,892.31	7,677.53	30.80	26.41	46.80	-803.39	758.97	900.76	847.23	53.53	16.827	
8,000.00	7,777.53	7,992.31	7,777.53	30.90	26.54	46.80	-803.39	758.97	900.76	846.98	53.79	16.747	
8,100.00	7,877.53	8,092.31	7,877.53	31.00	26.68	46.80	-803.39	758.97	900.76	846.72	54.04	16.667	
8,200.00	7,977.53	8,099.79	7,885.00	31.11	26.69	46.80	-803.39	758.97	905.50	851.32	54.18	16.713	
8,300.00	8,077.53	8,099.79	7,885.00	31.22	26.69	46.80	-803.39	758.97	921.11	866.80	54.30	16.962	
8,400.00	8,177.53	8,099.79	7,885.00	31.32	26.69	46.80	-803.39	758.97	947.07	892.64	54.43	17.400	
8,504.47	8,282.00	8,099.79	7,885.00	31.44	26.69	46.80	-803.39	758.97	984.37	929.81	54.56	18.041	

<b>Company:</b>	US ROCKIES REGION PLANNING	<b>Local Co-ordinate Reference:</b>	Well P_DRY CREEK 22-27
<b>Project:</b>	COLORADO NOTHERN ZONE - 83	<b>TVD Reference:</b>	WELL @ 5023.00ft (Original Well Elev)
<b>Reference Site:</b>	WELD_DRY CREEK PAD 7	<b>MD Reference:</b>	WELL @ 5023.00ft (Original Well Elev)
<b>Site Error:</b>	0.00ft	<b>North Reference:</b>	Grid
<b>Reference Well:</b>	P_DRY CREEK 22-27	<b>Survey Calculation Method:</b>	Minimum Curvature
<b>Well Error:</b>	0.00ft	<b>Output errors are at</b>	2.00 sigma
<b>Reference Wellbore</b>	P_DRY CREEK 22-27	<b>Database:</b>	EDM 2003.21 Single User Db
<b>Reference Design:</b>	PLAN #1 10-26-09 RHS	<b>Offset TVD Reference:</b>	Offset Datum

Offset Design WELD_DRY CREEK PAD 7 - UPRR 42 PAN AM 'AM-TRUE #1 EXISTING - UPRR 42 PAN AM 'AM-TR												Offset Site Error:	0.00 ft
Survey Program: 0-UNKNOWN												Offset Well Error:	0.00 ft
Reference	Offset	Semi Major Axis					Distance						Warning
Measured Depth (ft)	Vertical Depth (ft)	Measured Depth (ft)	Vertical Depth (ft)	Reference (ft)	Offset (ft)	Highside Toolface (°)	Offset Wellbore Centre +N/-S (ft)	+E/-W (ft)	Between Centres (ft)	Between Ellipses (ft)	Minimum Separation (ft)	Separation Factor	
0.00	0.00	0.00	0.00	0.00	0.00	-93.94	-4.86	-70.54	70.71				
100.00	100.00	100.00	100.00	0.10	1.70	-93.94	-4.86	-70.54	70.71	68.91	1.80	39.379	
200.00	200.00	200.00	200.00	0.32	5.70	-93.94	-4.86	-70.54	70.71	64.69	6.02	11.745	
300.00	300.00	300.00	300.00	0.55	9.70	-93.94	-4.86	-70.54	70.71	60.46	10.25	6.902	
400.00	400.00	400.00	400.00	0.77	13.70	-93.94	-4.86	-70.54	70.71	56.24	14.47	4.886	
500.00	500.00	500.00	500.00	0.99	17.70	-93.94	-4.86	-70.54	70.71	52.01	18.69	3.782	
600.00	600.00	600.00	600.00	1.22	21.70	-93.94	-4.86	-70.54	70.71	47.79	22.92	3.085	
700.00	700.00	700.00	700.00	1.44	25.70	-93.94	-4.86	-70.54	70.71	43.56	27.14	2.605	
800.00	800.00	800.00	800.00	1.67	29.70	-93.94	-4.86	-70.54	70.71	39.34	31.37	2.254	
900.00	900.00	900.00	900.00	1.89	33.70	-93.94	-4.86	-70.54	70.71	35.11	35.59	1.986	
1,000.00	1,000.00	1,000.00	1,000.00	2.12	37.70	-93.94	-4.86	-70.54	70.71	30.89	39.82	1.776	
1,100.00	1,100.00	1,100.00	1,100.00	2.34	41.70	-93.94	-4.86	-70.54	70.71	26.66	44.04	1.605	
1,200.00	1,200.00	1,200.00	1,200.00	2.57	45.70	-93.94	-4.86	-70.54	70.71	22.44	48.27	1.465 Level 3	
1,250.00	1,250.00	1,250.00	1,250.00	2.68	47.70	-93.94	-4.86	-70.54	70.71	20.33	50.38	1.403 Level 3, CC	
1,300.00	1,300.00	1,300.00	1,300.00	2.78	49.70	90.53	-4.86	-70.54	70.71	18.23	52.48	1.347 Level 3	
1,400.00	1,399.93	1,399.93	1,399.93	2.95	53.70	93.35	-4.86	-70.54	70.83	14.18	56.65	1.250 Level 3	
1,500.00	1,499.68	1,499.68	1,499.68	3.13	57.69	98.91	-4.86	-70.54	71.58	10.76	60.81	1.177 Level 2	
1,600.00	1,599.13	1,599.13	1,599.13	3.33	61.67	106.85	-4.86	-70.54	73.93	8.96	64.96	1.138 Level 2, ES, SF	
1,700.00	1,698.15	1,698.15	1,698.15	3.55	65.63	116.37	-4.86	-70.54	79.12	10.09	69.02	1.146 Level 2	
1,800.00	1,796.63	1,796.63	1,796.63	3.80	69.57	126.27	-4.86	-70.54	88.28	15.37	72.91	1.211 Level 2	
1,900.00	1,894.44	1,894.44	1,894.44	4.10	73.48	135.42	-4.86	-70.54	102.10	25.53	76.56	1.333 Level 3	
2,000.00	1,991.46	1,991.46	1,991.46	4.46	77.36	143.20	-4.86	-70.54	120.71	40.76	79.96	1.510	
2,100.00	2,087.58	2,087.58	2,087.58	4.86	81.20	149.48	-4.86	-70.54	143.96	60.86	83.10	1.732	
2,209.24	2,191.42	2,191.42	2,191.42	5.38	85.36	154.83	-4.86	-70.54	174.31	88.03	86.28	2.020	
2,300.00	2,277.14	2,277.14	2,277.14	5.86	88.79	158.41	-4.86	-70.54	201.93	112.38	89.56	2.255	
2,400.00	2,371.58	2,371.58	2,371.58	6.41	92.56	161.37	-4.86	-70.54	233.00	139.76	93.24	2.499	
2,500.00	2,466.03	2,466.03	2,466.03	6.98	96.34	163.63	-4.86	-70.54	264.50	167.53	96.97	2.728	
2,600.00	2,560.47	2,560.47	2,560.47	7.57	100.12	165.42	-4.86	-70.54	296.29	195.56	100.74	2.941	
2,700.00	2,654.92	2,654.92	2,654.92	8.16	103.90	166.86	-4.86	-70.54	328.30	223.78	104.52	3.141	
2,800.00	2,749.37	2,749.37	2,749.37	8.77	107.67	168.04	-4.86	-70.54	360.46	252.13	108.33	3.327	
2,900.00	2,843.81	2,843.81	2,843.81	9.39	111.45	169.03	-4.86	-70.54	392.74	280.59	112.15	3.502	
3,000.00	2,938.26	2,938.26	2,938.26	10.01	115.23	169.87	-4.86	-70.54	425.10	309.12	115.98	3.665	
3,100.00	3,032.71	3,032.71	3,032.71	10.64	119.01	170.60	-4.86	-70.54	457.54	337.72	119.81	3.819	
3,200.00	3,127.15	3,127.15	3,127.15	11.27	122.79	171.22	-4.86	-70.54	490.03	366.37	123.66	3.963	
3,300.00	3,221.60	3,221.60	3,221.60	11.91	126.56	171.77	-4.86	-70.54	522.57	395.06	127.51	4.098	
3,400.00	3,316.04	3,316.04	3,316.04	12.54	130.34	172.26	-4.86	-70.54	555.15	423.79	131.36	4.226	
3,500.00	3,410.49	3,410.49	3,410.49	13.19	134.12	172.69	-4.86	-70.54	587.76	452.54	135.22	4.347	
3,600.00	3,504.94	3,504.94	3,504.94	13.83	137.90	173.07	-4.86	-70.54	620.39	481.32	139.08	4.461	
3,700.00	3,599.38	3,599.38	3,599.38	14.47	141.68	173.42	-4.86	-70.54	653.05	510.11	142.94	4.569	
3,800.00	3,693.83	3,693.83	3,693.83	15.12	145.45	173.74	-4.86	-70.54	685.73	538.92	146.81	4.671	
3,900.00	3,788.28	3,788.28	3,788.28	15.77	149.23	174.02	-4.86	-70.54	718.42	567.75	150.67	4.768	
4,000.00	3,882.72	3,882.72	3,882.72	16.42	153.01	174.28	-4.86	-70.54	751.13	596.59	154.54	4.860	
4,100.00	3,977.17	3,977.17	3,977.17	17.07	156.79	174.52	-4.86	-70.54	783.85	625.44	158.41	4.948	
4,200.00	4,071.62	4,071.62	4,071.62	17.73	160.56	174.74	-4.86	-70.54	816.59	654.30	162.29	5.032	
4,300.00	4,166.06	4,166.06	4,166.06	18.38	164.34	174.95	-4.86	-70.54	849.33	683.17	166.16	5.112	
4,400.00	4,260.51	4,260.51	4,260.51	19.03	168.12	175.13	-4.86	-70.54	882.08	712.05	170.03	5.188	
4,500.00	4,354.95	4,354.95	4,354.95	19.69	171.90	175.31	-4.86	-70.54	914.84	740.93	173.91	5.260	
4,600.00	4,449.40	4,449.40	4,449.40	20.34	175.68	175.47	-4.86	-70.54	947.61	769.82	177.79	5.330	
4,700.00	4,543.85	4,543.85	4,543.85	21.00	179.45	175.62	-4.86	-70.54	980.38	798.72	181.67	5.397	
4,800.00	4,638.29	4,638.29	4,638.29	21.66	183.23	175.76	-4.86	-70.54	1,013.16	827.62	185.54	5.460	
4,900.00	4,732.74	4,732.74	4,732.74	22.31	187.01	175.90	-4.86	-70.54	1,045.95	856.52	189.42	5.522	
5,000.00	4,827.19	4,827.19	4,827.19	22.97	190.79	176.02	-4.86	-70.54	1,078.73	885.43	193.30	5.580	

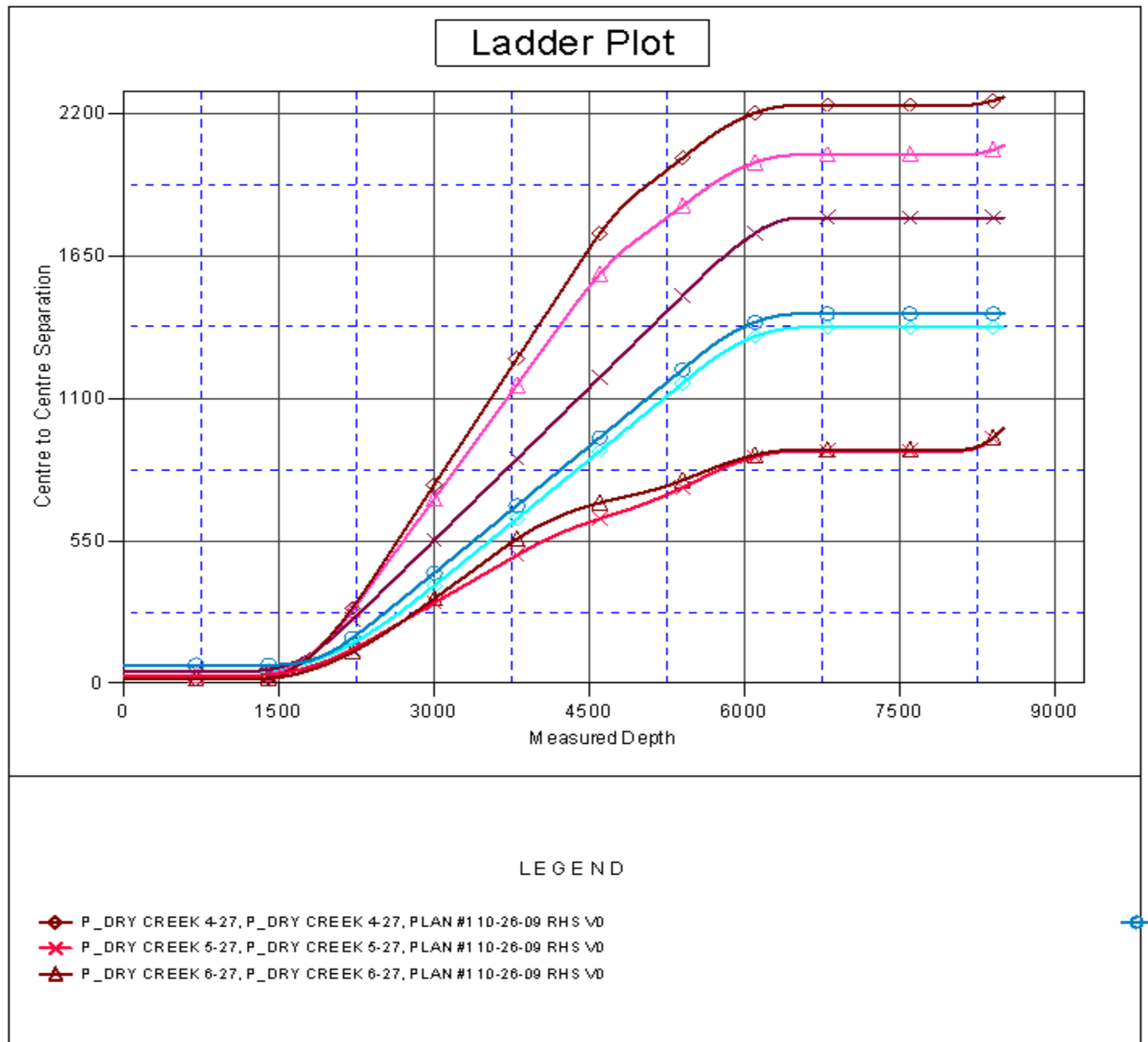
CC - Min centre to center distance or convergent point, SF - min separation factor, ES - min ellipse separation

<b>Company:</b>	US ROCKIES REGION PLANNING	<b>Local Co-ordinate Reference:</b>	Well P_DRY CREEK 22-27
<b>Project:</b>	COLORADO NORTHERN ZONE - 83	<b>TVD Reference:</b>	WELL @ 5023.00ft (Original Well Elev)
<b>Reference Site:</b>	WELD_DRY CREEK PAD 7	<b>MD Reference:</b>	WELL @ 5023.00ft (Original Well Elev)
<b>Site Error:</b>	0.00ft	<b>North Reference:</b>	Grid
<b>Reference Well:</b>	P_DRY CREEK 22-27	<b>Survey Calculation Method:</b>	Minimum Curvature
<b>Well Error:</b>	0.00ft	<b>Output errors are at</b>	2.00 sigma
<b>Reference Wellbore</b>	P_DRY CREEK 22-27	<b>Database:</b>	EDM 2003.21 Single User Db
<b>Reference Design:</b>	PLAN #1 10-26-09 RHS	<b>Offset TVD Reference:</b>	Offset Datum

Offset Design WELD_DRY CREEK PAD 7 - UPRR 42 PAN AM 'AM-TRUE #1 EXISTING - UPRR 42 PAN AM 'AM-TR													Offset Site Error: 0.00 ft
Survey Program: 0-UNKNOWN													Offset Well Error: 0.00 ft
Reference		Offset		Semi Major Axis			Distance						
Measured Depth (ft)	Vertical Depth (ft)	Measured Depth (ft)	Vertical Depth (ft)	Reference (ft)	Offset (ft)	Highside Toolface (°)	Offset Wellbore Centre +N/-S (ft)	+E/-W (ft)	Between Centres (ft)	Between Ellipses (ft)	Minimum Separation (ft)	Separation Factor	Warning
5,100.00	4,921.63	4,921.63	4,921.63	23.63	194.57	176.14	-4.86	-70.54	1,111.53	914.34	197.19	5.637	
5,200.00	5,016.08	5,016.08	5,016.08	24.29	198.34	176.25	-4.86	-70.54	1,144.32	943.26	201.07	5.691	
5,300.00	5,110.53	5,110.53	5,110.53	24.95	202.12	176.35	-4.86	-70.54	1,177.12	972.18	204.95	5.743	
5,400.00	5,204.97	5,204.97	5,204.97	25.61	205.90	176.45	-4.86	-70.54	1,209.93	1,001.10	208.83	5.794	
5,500.00	5,299.42	5,299.42	5,299.42	26.27	209.68	176.55	-4.86	-70.54	1,242.74	1,030.02	212.71	5.842	
5,573.23	5,368.58	5,368.58	5,368.58	26.75	212.44	176.61	-4.86	-70.54	1,266.76	1,051.20	215.56	5.877	
5,600.00	5,393.91	5,393.91	5,393.91	26.90	213.46	176.65	-4.86	-70.54	1,275.43	1,058.22	217.21	5.872	
5,700.00	5,489.19	5,489.19	5,489.19	27.35	217.27	176.76	-4.86	-70.54	1,305.70	1,082.42	223.28	5.848	
5,800.00	5,585.48	5,585.48	5,585.48	27.76	221.12	176.86	-4.86	-70.54	1,332.63	1,103.33	229.31	5.812	
5,900.00	5,682.65	5,682.65	5,682.65	28.13	225.01	176.94	-4.86	-70.54	1,356.20	1,121.05	235.15	5.767	
6,000.00	5,780.59	5,780.59	5,780.59	28.47	228.92	177.00	-4.86	-70.54	1,376.36	1,135.58	240.78	5.716	
6,100.00	5,879.17	5,879.17	5,879.17	28.76	232.87	177.06	-4.86	-70.54	1,393.10	1,146.92	246.19	5.659	
6,200.00	5,978.27	5,978.27	5,978.27	29.01	236.83	177.10	-4.86	-70.54	1,406.40	1,155.06	251.34	5.596	
6,300.00	6,077.78	6,077.78	6,077.78	29.21	240.81	177.13	-4.86	-70.54	1,416.23	1,160.01	256.22	5.527	
6,400.00	6,177.57	6,177.57	6,177.57	29.38	244.80	177.15	-4.86	-70.54	1,422.58	1,161.77	260.81	5.454	
6,500.00	6,277.53	6,277.53	6,277.53	29.50	248.80	177.16	-4.86	-70.54	1,425.46	1,160.37	265.09	5.377	
6,532.47	6,310.00	6,310.00	6,310.00	29.53	250.10	-6.96	-4.86	-70.54	1,425.64	1,159.23	266.42	5.351	
6,600.00	6,377.53	6,377.53	6,377.53	29.59	252.80	-6.96	-4.86	-70.54	1,425.64	1,156.42	269.23	5.295	
6,700.00	6,477.53	6,477.53	6,477.53	29.68	256.80	-6.96	-4.86	-70.54	1,425.64	1,152.26	273.38	5.215	
6,800.00	6,577.53	6,577.53	6,577.53	29.76	260.80	-6.96	-4.86	-70.54	1,425.64	1,148.10	277.54	5.137	
6,900.00	6,677.53	6,677.53	6,677.53	29.85	264.80	-6.96	-4.86	-70.54	1,425.64	1,143.94	281.70	5.061	
7,000.00	6,777.53	6,777.53	6,777.53	29.94	268.80	-6.96	-4.86	-70.54	1,425.64	1,139.78	285.86	4.987	
7,100.00	6,877.53	6,877.53	6,877.53	30.03	272.80	-6.96	-4.86	-70.54	1,425.64	1,135.62	290.02	4.916	
7,200.00	6,977.53	6,977.53	6,977.53	30.12	276.80	-6.96	-4.86	-70.54	1,425.64	1,131.45	294.19	4.846	
7,300.00	7,077.53	7,077.53	7,077.53	30.21	280.80	-6.96	-4.86	-70.54	1,425.64	1,127.29	298.35	4.778	
7,400.00	7,177.53	7,177.53	7,177.53	30.31	284.80	-6.96	-4.86	-70.54	1,425.64	1,123.12	302.52	4.713	
7,500.00	7,277.53	7,277.53	7,277.53	30.40	288.80	-6.96	-4.86	-70.54	1,425.64	1,118.96	306.69	4.649	
7,600.00	7,377.53	7,377.53	7,377.53	30.50	292.80	-6.96	-4.86	-70.54	1,425.64	1,114.79	310.86	4.586	
7,700.00	7,477.53	7,477.53	7,477.53	30.60	296.80	-6.96	-4.86	-70.54	1,425.64	1,110.62	315.03	4.525	
7,800.00	7,577.53	7,577.53	7,577.53	30.70	300.80	-6.96	-4.86	-70.54	1,425.64	1,106.44	319.20	4.466	
7,900.00	7,677.53	7,677.53	7,677.53	30.80	304.80	-6.96	-4.86	-70.54	1,425.64	1,102.27	323.37	4.409	
8,000.00	7,777.53	7,777.53	7,777.53	30.90	308.80	-6.96	-4.86	-70.54	1,425.64	1,098.10	327.54	4.353	
8,100.00	7,877.53	7,877.53	7,877.53	31.00	312.80	-6.96	-4.86	-70.54	1,425.64	1,093.92	331.72	4.298	
8,200.00	7,977.53	7,977.53	7,977.53	31.11	316.80	-6.96	-4.86	-70.54	1,425.64	1,089.75	335.89	4.244	
8,300.00	8,077.53	8,077.53	8,077.53	31.22	320.80	-6.96	-4.86	-70.54	1,425.64	1,085.57	340.07	4.192	
8,400.00	8,177.53	8,177.53	8,177.53	31.32	324.80	-6.96	-4.86	-70.54	1,425.64	1,081.39	344.25	4.141	
8,444.31	8,221.83	8,221.83	8,221.83	31.37	326.57	-6.96	-4.86	-70.54	1,425.64	1,079.54	346.10	4.119	
8,504.47	8,282.00	8,238.00	8,238.00	31.44	327.22	-6.96	-4.86	-70.54	1,426.32	1,079.47	346.85	4.112	

<b>Company:</b>	US ROCKIES REGION PLANNING	<b>Local Co-ordinate Reference:</b>	Well P_DRY CREEK 22-27
<b>Project:</b>	COLORADO NOTHERN ZONE - 83	<b>TVD Reference:</b>	WELL @ 5023.00ft (Original Well Elev)
<b>Reference Site:</b>	WELD_DRY CREEK PAD 7	<b>MD Reference:</b>	WELL @ 5023.00ft (Original Well Elev)
<b>Site Error:</b>	0.00ft	<b>North Reference:</b>	Grid
<b>Reference Well:</b>	P_DRY CREEK 22-27	<b>Survey Calculation Method:</b>	Minimum Curvature
<b>Well Error:</b>	0.00ft	<b>Output errors are at</b>	2.00 sigma
<b>Reference Wellbore</b>	P_DRY CREEK 22-27	<b>Database:</b>	EDM 2003.21 Single User Db
<b>Reference Design:</b>	PLAN #1 10-26-09 RHS	<b>Offset TVD Reference:</b>	Offset Datum

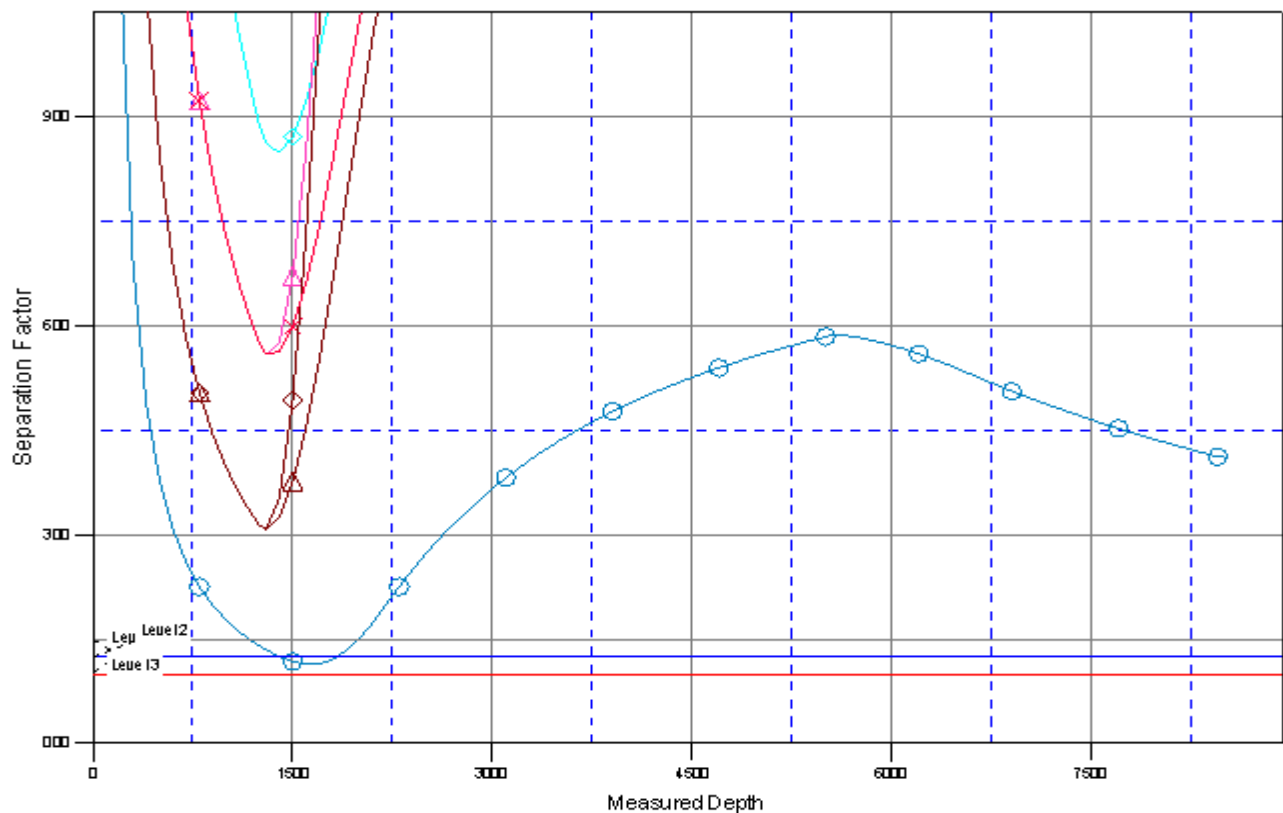
Reference Depths are relative to WELL @ 5023.00ft (Original Well Elev) Coordinates are relative to: P\_DRY CREEK 22-27  
Offset Depths are relative to Offset Datum Coordinate System is US State Plane 1983, Colorado Northern Zone  
Central Meridian is 105° 30' 0.000 W ° Grid Convergence at Surface is: 0.40°



<b>Company:</b>	US ROCKIES REGION PLANNING	<b>Local Co-ordinate Reference:</b>	Well P_DRY CREEK 22-27
<b>Project:</b>	COLORADO NOTHERN ZONE - 83	<b>TVD Reference:</b>	WELL @ 5023.00ft (Original Well Elev)
<b>Reference Site:</b>	WELD_DRY CREEK PAD 7	<b>MD Reference:</b>	WELL @ 5023.00ft (Original Well Elev)
<b>Site Error:</b>	0.00ft	<b>North Reference:</b>	Grid
<b>Reference Well:</b>	P_DRY CREEK 22-27	<b>Survey Calculation Method:</b>	Minimum Curvature
<b>Well Error:</b>	0.00ft	<b>Output errors are at</b>	2.00 sigma
<b>Reference Wellbore</b>	P_DRY CREEK 22-27	<b>Database:</b>	EDM 2003.21 Single User Db
<b>Reference Design:</b>	PLAN #1 10-26-09 RHS	<b>Offset TVD Reference:</b>	Offset Datum

Reference Depths are relative to WELL @ 5023.00ft (Original Well Elev) Coordinates are relative to: P\_DRY CREEK 22-27  
Offset Depths are relative to Offset Datum Coordinate System is US State Plane 1983, Colorado Northern Zone  
Central Meridian is 105° 30' 0.000 W ° Grid Convergence at Surface is: 0.40°

## Separation Factor Plot



### LEGEND

- ◆ P\_DRY CREEK 4-27, P\_DRY CREEK 4-27, PLAN #1 10-26-09 RHS \0
- ✕ P\_DRY CREEK 5-27, P\_DRY CREEK 5-27, PLAN #1 10-26-09 RHS \0
- △ P\_DRY CREEK 6-27, P\_DRY CREEK 6-27, PLAN #1 10-26-09 RHS \0