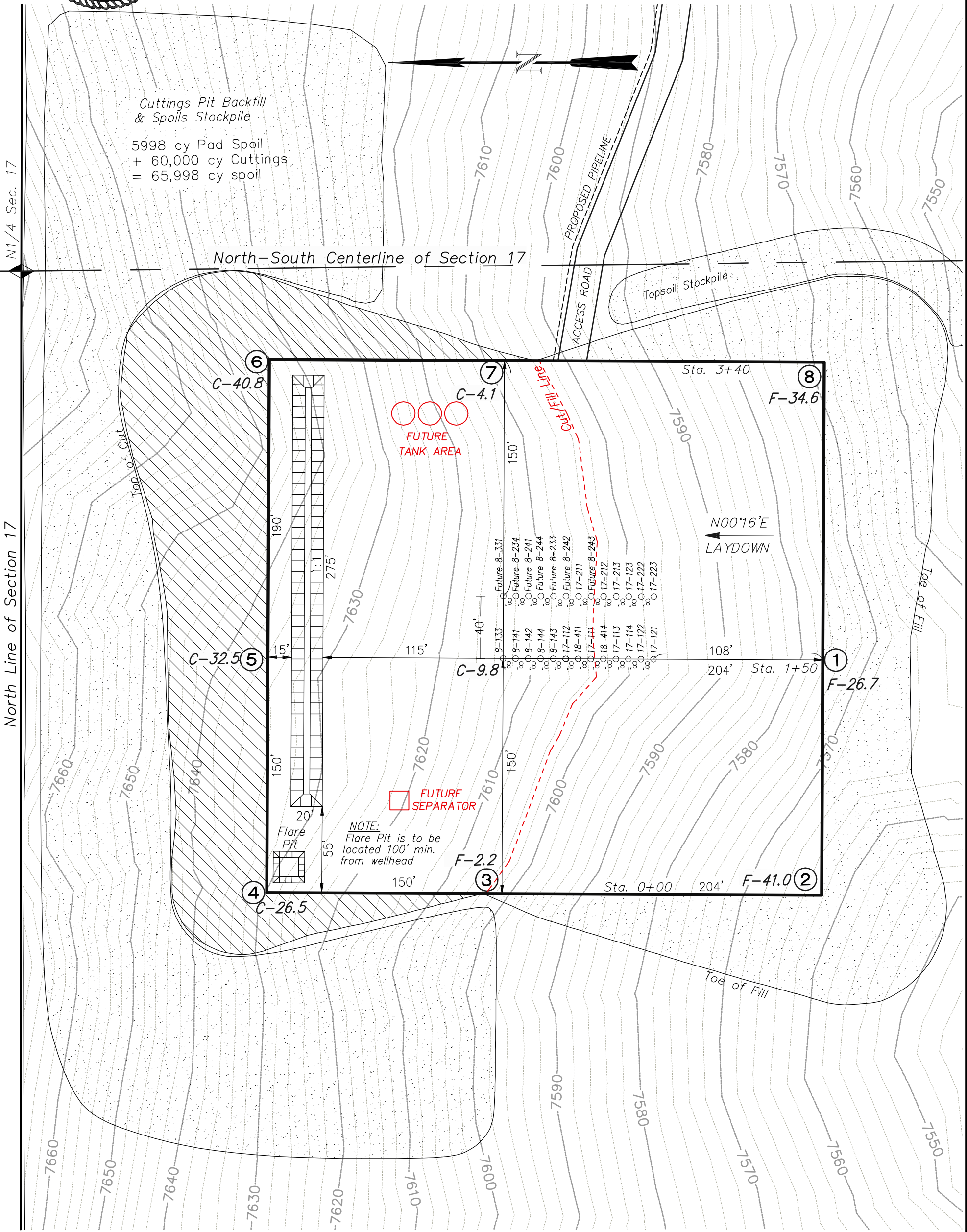




Delta Petroleum Corporation  
LOCATION LAYOUT FOR  
PAD NBC 17C  
SECTION 17, T9S, R93W, 6th P.M.



NOTES:

Elev. Ungraded Ground At Loc. Stake = 7613.1'  
FINISHED GRADE ELEV. AT LOC. STAKE = 7603.3'



906 Main Street  
Evanston, Wyoming 82930  
Phone No. (307) 789-4545

Location Layout		Scale: 1" = 60'		SHEET  <b>6</b>
Project No.	08-07-11	Date Surveyed:	8/21/08	
Date Drawn:	9/10/08	Latest Revision Date:	3/31/10	