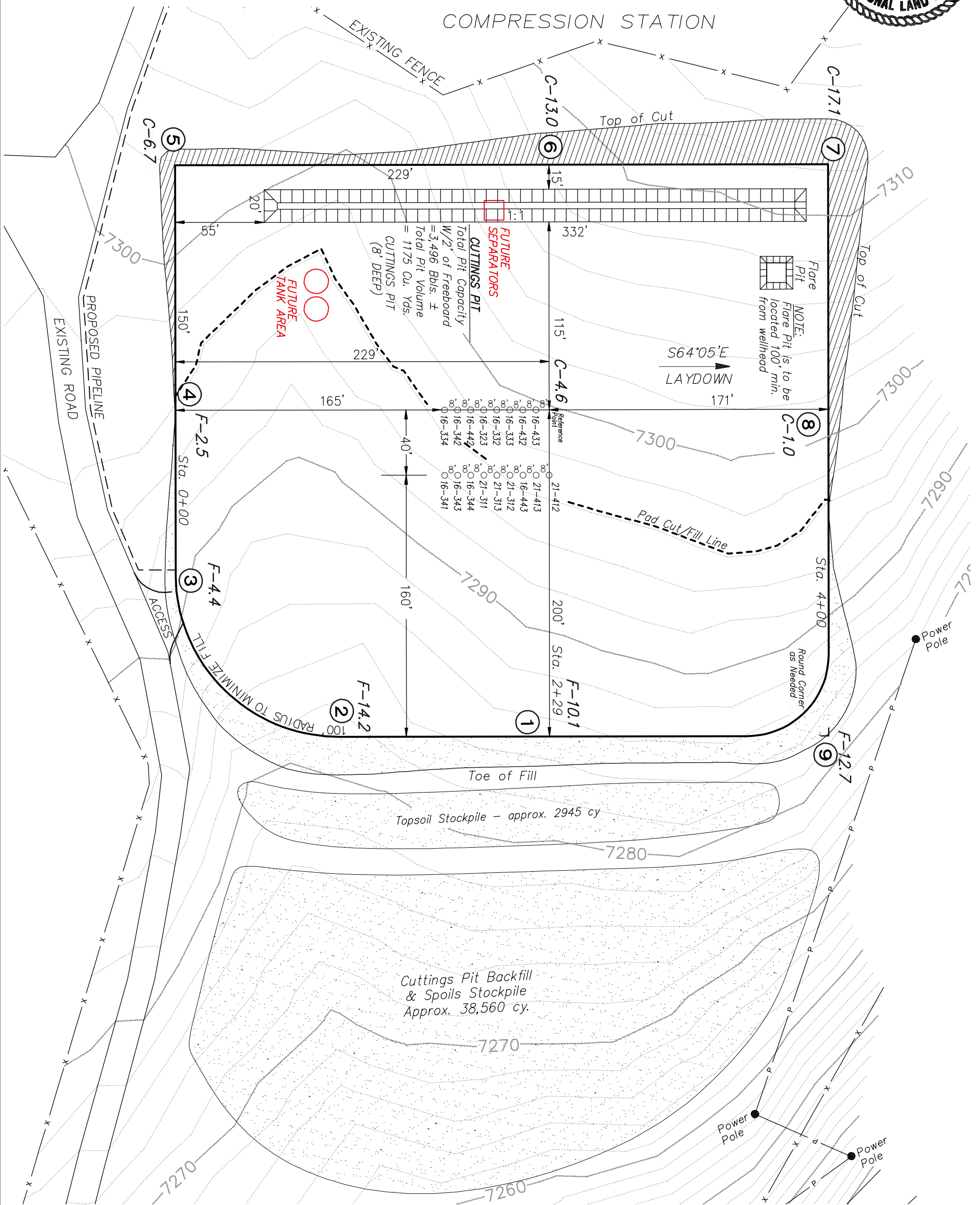
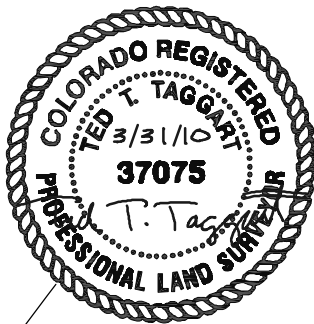


Delta Petroleum Corporation  
LOCATION LAYOUT FOR  
PAD BCU 16PA  
SECTION 16, T9S, R93W, 6th P.M.



NOTES:

Elev. Ungraded Ground At Loc. Stake = 7299.8'  
FINISHED GRADE ELEV. AT LOC. STAKE = 7295.2'



906 Main Street  
Evanston, Wyoming 82930  
Phone No. (307) 789-4545

Location Layout		Scale: 1" = 60'	SHEET <b>6</b>
Project No.	08-07-07A	Date Surveyed:	
Date Drawn:	8/12/08	Latest Revision Date:	