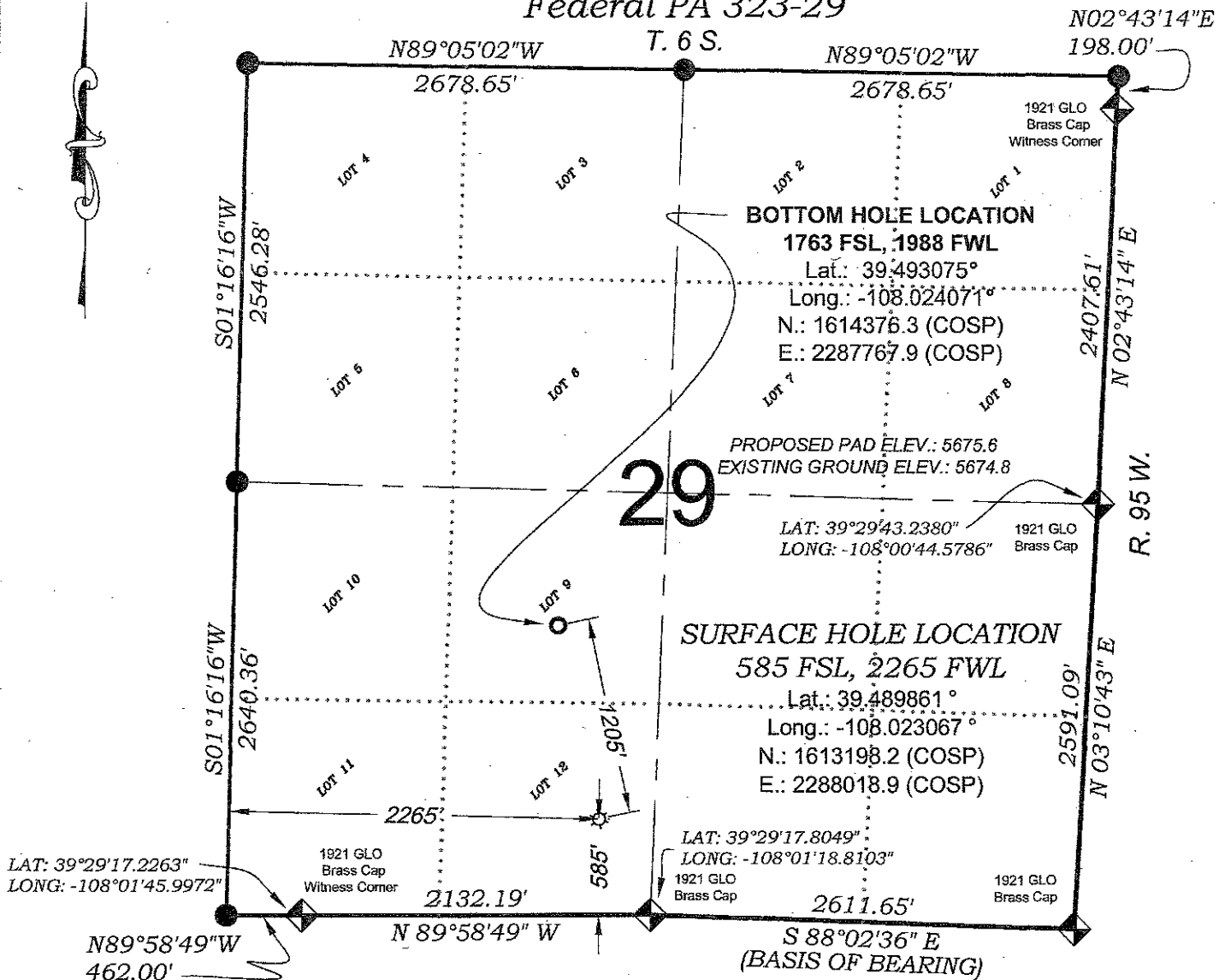


# Federal PA 323-29



LAT: 39°29'17.2263"  
LONG: -108°01'45.9972"

1921 GLO  
Brass Cap  
Witness Corner

N89°58'49"W  
462.00'

N 89°58'49" W

2132.19'

585'

LAT: 39°29'17.8049"  
LONG: -108°01'18.8103"

1921 GLO  
Brass Cap

2611.65'

S 88°02'36" E  
(BASIS OF BEARING)

1921 GLO  
Brass Cap

2591.09'  
N 03°10'43" E

R. 95 W.

2407.61'  
N 02°43'14" E

N02°43'14"E  
198.00'

1921 GLO  
Brass Cap  
Witness Corner

**BOTTOM HOLE LOCATION**  
1763 FSL, 1988 FWL  
Lat.: 39.493075°  
Long.: -108.024071°  
N.: 1614376.3 (COSP)  
E.: 2287767.9 (COSP)

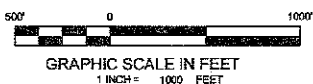
PROPOSED PAD ELEV.: 5675.6  
EXISTING GROUND ELEV.: 5674.8

LAT: 39°29'43.2380"  
LONG: -108°00'44.5786"

1921 GLO  
Brass Cap

**SURFACE HOLE LOCATION**  
585 FSL, 2265 FWL  
Lat.: 39.489861°  
Long.: -108.023067°  
N.: 1613198.2 (COSP)  
E.: 2288018.9 (COSP)

SEE CURRENT FOOTAGES SHEET  
FOR VISIBLE IMPROVEMENTS  
WITHIN 400' OF THIS LOCATION



## - LEGEND -

FIELD LOCATED SECTION  
MONUMENTS AS DESCRIBED

FIELD SURVEYED  
WELL LOCATION

CALCULATED BOTTOM  
HOLE LOCATION

CALCULATED SECTION  
CORNER LOCATION

## SURVEYORS STATEMENT

I, MICHAEL J. LANGHORNE, A REGISTERED LAND SURVEYOR IN THE  
STATE OF COLORADO DO HEREBY CERTIFY THAT THE SURVEY SHOWN  
HEREON WAS PREPARED UNDER MY DIRECT SUPERVISION AND HAS  
BEEN STAKED ON THE GROUND AS SHOWN ON THE PLAT AND  
CHECKING THAT THIS MAP IS A TRUE REPRESENTATION THEREOF.

*Michael J. Langhorne*

MICHAEL J. LANGHORNE, COLORADO REGISTRATION NO. 36572  
FOR AND ON BEHALF OF  
BOOKCLIFF SURVEY SERVICES, INC.

## NOTES

- 1) ELEVATIONS BASED ON N.A.V.D. 1988 PUBLISHED COORDINATES.
- 2) LATITUDES AND LONGITUDES ARE BASE ON NAD 83, PUBLISHED COORDINATES
- 3) STATE PLANE COORDINATES ARE BASED ON COLORADO CENTRAL ZONE, U.S. SURVEY FEET.
- 4) ELEVATION MASK SET TO 15"
- 5) GPS OPERATOR J. KIRKPATRICK, OBSERVED A PDOP OF LESS THAN 6.0
- 6) SURFACE AND BOTTOM HOLE LOCATIONS ARE MEASURED 90° FROM SECTION LINES.

## WELL LOCATION PLAT Prepared for:

**Williams** Williams Production, RMT

SE1/4 SW1/4, SECTION 29  
T. 6 S., R. 95 W. of the 6th. P.M.  
GARFIELD COUNTY, COLORADO

## REFERENCES

- 1) DEPENDENT RESURVEY T. 6 S., R. 95 W., 6 th P.M (GLO PLAT)
- 2) U.S.G.S. QUAD: PARACHUTE, CO

SURVEY DATE: 11/18/08  
MAP DATE: 4/14/09  
SCALE: 1" = 1000'  
SHEET: 1 of 9  
PROJECT: Williams

136 East Third Street  
Tampa, Colorado 81650  
PH: (970) 625-1330  
Fax: (970) 625-2773



**BOOKCLIFF**  
Survey Services, Inc.