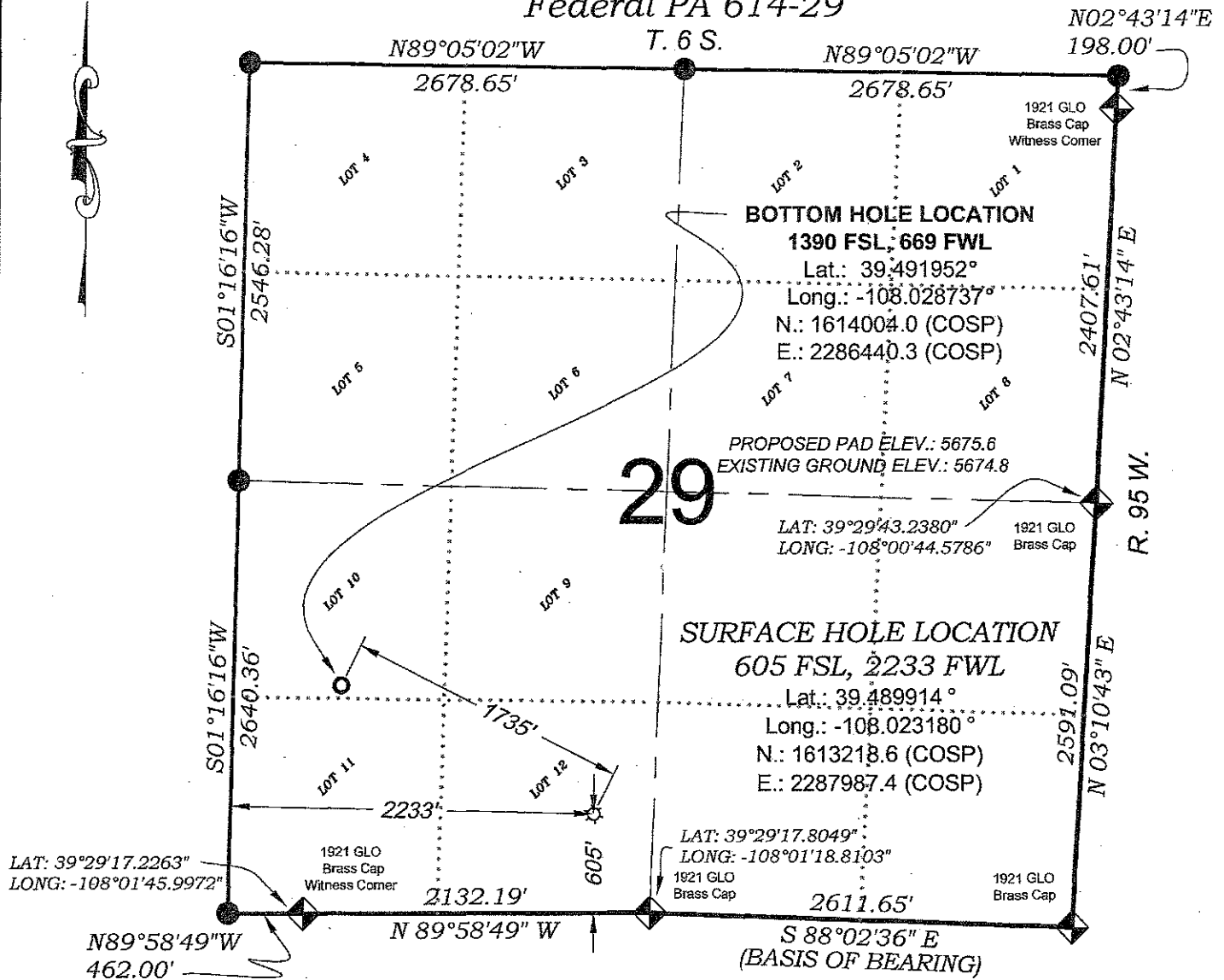


# Federal PA 614-29

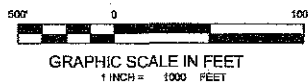


LAT: 39°29'17.2263"  
 LONG: -108°01'45.9972"

LAT: 39°29'43.2380"  
 LONG: -108°00'44.5786"

LAT: 39°29'17.8049"  
 LONG: -108°01'18.8103"

SEE CURRENT FOOTAGES SHEET  
 FOR VISIBLE IMPROVEMENTS  
 WITHIN 400' OF THIS LOCATION



## - LEGEND -

FIELD LOCATED SECTION  
 MONUMENTS AS DESCRIBED

FIELD SURVEYED  
 WELL LOCATION  
 CALCULATED BOTTOM  
 HOLE LOCATION  
 CALCULATED SECTION  
 CORNER LOCATION

## SURVEYORS STATEMENT

I, MICHAEL J. LANGHORNE, A REGISTERED LAND SURVEYOR IN THE STATE OF COLORADO DO HEREBY CERTIFY THAT THE SURVEY SHOWN HEREON WAS PREPARED UNDER MY DIRECT SUPERVISION AND HAS BEEN STAKED ON THE GROUND AS SHOWN ON THE PLAT AND CHECKING THAT THIS MAP IS A TRUE REPRESENTATION THEREOF.

*Michael J. Langhorne*

MICHAEL J. LANGHORNE, COLORADO REGISTRATION NO. 36572  
 FOR AND ON BEHALF OF  
 BOOKCLIFF SURVEY SERVICES, INC.

## REFERENCES

- 1) DEPENDENT RESURVEY T. 6 S., R. 95 W., 6<sup>th</sup> P.M. (GLO PLAT)
- 2) U.S.G.S. QUAD: PARACHUTE, CO

## NOTES

- 1) ELEVATIONS BASED ON N.A.V.D. 1988 PUBLISHED COORDINATES.
- 2) LATITUDES AND LONGITUDES ARE BASE ON NAD 83, PUBLISHED COORDINATES
- 3) STATE PLANE COORDINATES ARE BASED ON COLORADO CENTRAL ZONE, U.S. SURVEY FEET.
- 4) ELEVATION MASK SET TO 15"
- 5) GPS OPERATOR J. KIRKPATRICK, OBSERVED A PDOP OF LESS THAN 6.0
- 6) SURFACE AND BOTTOM HOLE LOCATIONS ARE MEASURED 90° FROM SECTION LINES.

## WELL LOCATION PLAT Prepared for:

**Williams.** Williams Production, RMT

SE1/4 SW1/4, SECTION 29  
 T. 6 S., R. 95 W. of the 6<sup>th</sup> P.M.  
 GARFIELD COUNTY, COLORADO

130 East Third Street  
 Rifle, Colorado 81550  
 Ph: (970) 625-1330  
 Fax: (970) 625-2773



**BOOKCLIFF**  
 Survey Services, Inc.

SURVEY DATE: 11/18/08  
 MAP DATE: 4/14/09  
 SCALE: 1" = 1000'  
 SHEET: 1 of 9  
 PROJECT: Williams