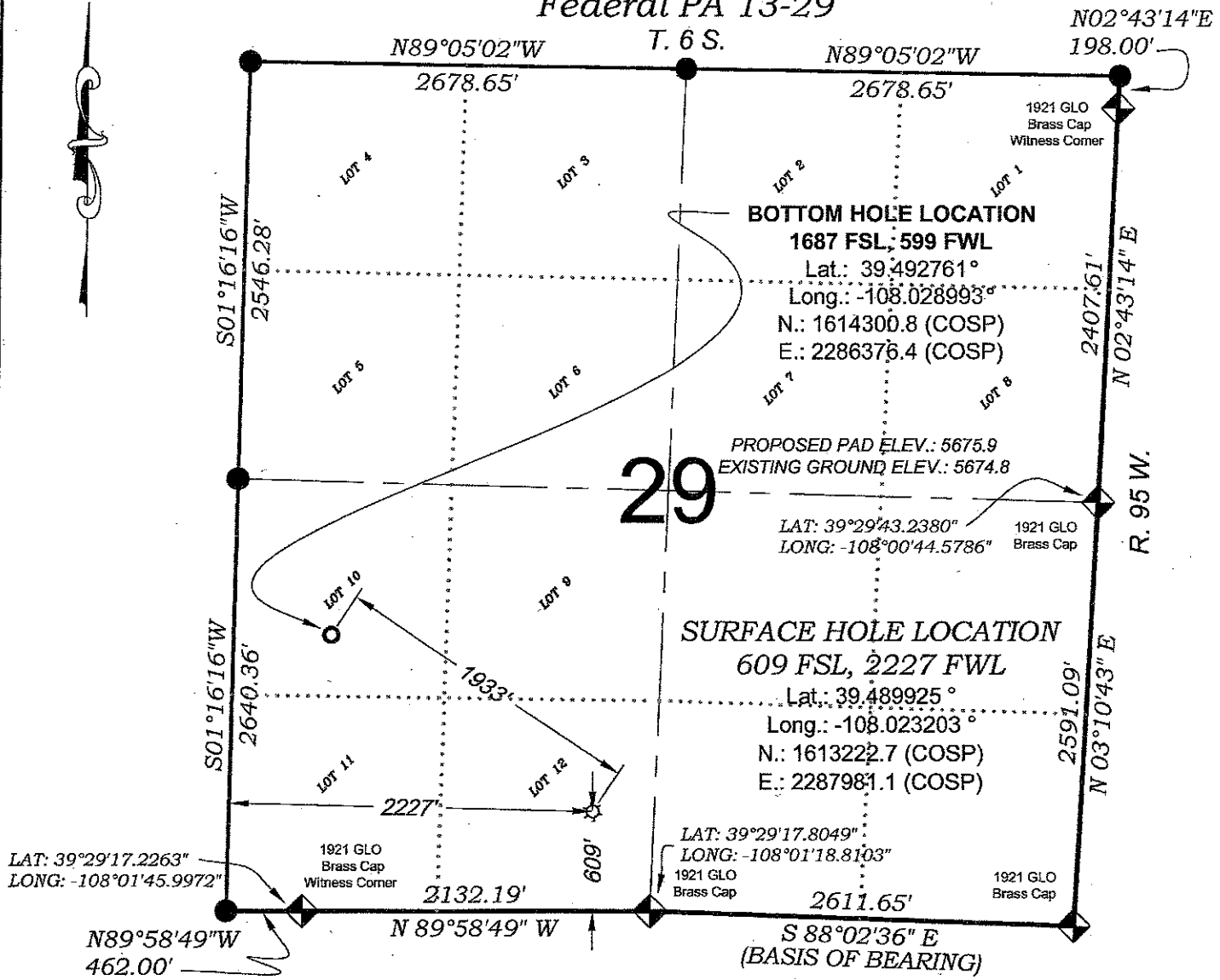


Federal PA 13-29



BOTTOM HOLE LOCATION

1687 FSL, 599 FWL
 Lat.: 39.492761°
 Long.: -108.028993°
 N.: 1614300.8 (COSP)
 E.: 2286376.4 (COSP)

PROPOSED PAD ELEV.: 5675.9
 EXISTING GROUND ELEV.: 5674.8

LAT: 39°29'43.2380"
 LONG: -108°00'44.5786"

SURFACE HOLE LOCATION

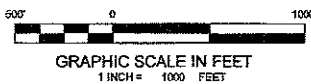
609 FSL, 2227 FWL
 Lat.: 39.489925°
 Long.: -108.023203°
 N.: 1613222.7 (COSP)
 E.: 2287981.1 (COSP)

LAT: 39°29'17.8049"
 LONG: -108°01'18.8103"

S 88°02'36" E
 (BASIS OF BEARING)

LAT: 39°29'17.2263"
 LONG: -108°01'45.9972"

SEE CURRENT FOOTAGES SHEET
 FOR VISIBLE IMPROVEMENTS
 WITHIN 400' OF THIS LOCATION



- LEGEND -

FIELD LOCATED SECTION MONUMENTS AS DESCRIBED

FIELD SURVEYED WELL LOCATION

CALCULATED BOTTOM HOLE LOCATION

CALCULATED SECTION CORNER LOCATION

SURVEYORS STATEMENT

I, MICHAEL J. LANGHORNE, A REGISTERED LAND SURVEYOR IN THE STATE OF COLORADO DO HEREBY CERTIFY THAT THE SURVEY SHOWN HEREON WAS PREPARED UNDER MY DIRECT SUPERVISION AND HAS BEEN STAKED ON THE GROUND AS SHOWN ON THE PLAT AND CHECKING THAT THIS MAP IS A TRUE REPRESENTATION THEREOF.

Michael J. Langhorne

MICHAEL J. LANGHORNE, COLORADO REGISTRATION NO. 36572
 FOR AND ON BEHALF OF
 BOOKCLIFF SURVEY SERVICES, INC.

NOTES

- ELEVATIONS BASED ON N.A.V.D. 1988 PUBLISHED COORDINATES.
- LATITUDES AND LONGITUDES ARE BASE ON NAD 83, PUBLISHED COORDINATES
- STATE PLANE COORDINATES ARE BASED ON COLORADO CENTRAL ZONE, U.S. SURVEY FEET.
- ELEVATION MASK SET TO 15"
- GPS OPERATOR J. KIRKPATRICK, OBSERVED A PDOP OF LESS THAN 6.0
- SURFACE AND BOTTOM HOLE LOCATIONS ARE MEASURED 90° FROM SECTION LINES.

WELL LOCATION PLAT Prepared for:

Williams Williams Production, RMT

SE1/4 SW1/4, SECTION 29
 T. 6 S., R. 95 W. of the 6th. P.M.
 GARFIELD COUNTY, COLORADO

REFERENCES

- DEPENDENT RESURVEY T. 6 S., R. 95 W., 6th P.M (GLO PLAT)
- U.S.G.S. QUAD: PARACHUTE, CO

REVISED: 3/4/10

SURVEY DATE: 11/18/08
 MAP DATE: 4/14/09
 SCALE: 1" = 1000'
 SHEET: 1 of 9
 PROJECT: Williams

2nd East Third Street
 Rifle, Colorado 81502
 PH: 970.625.1130
 FAX: 970.625.2173

