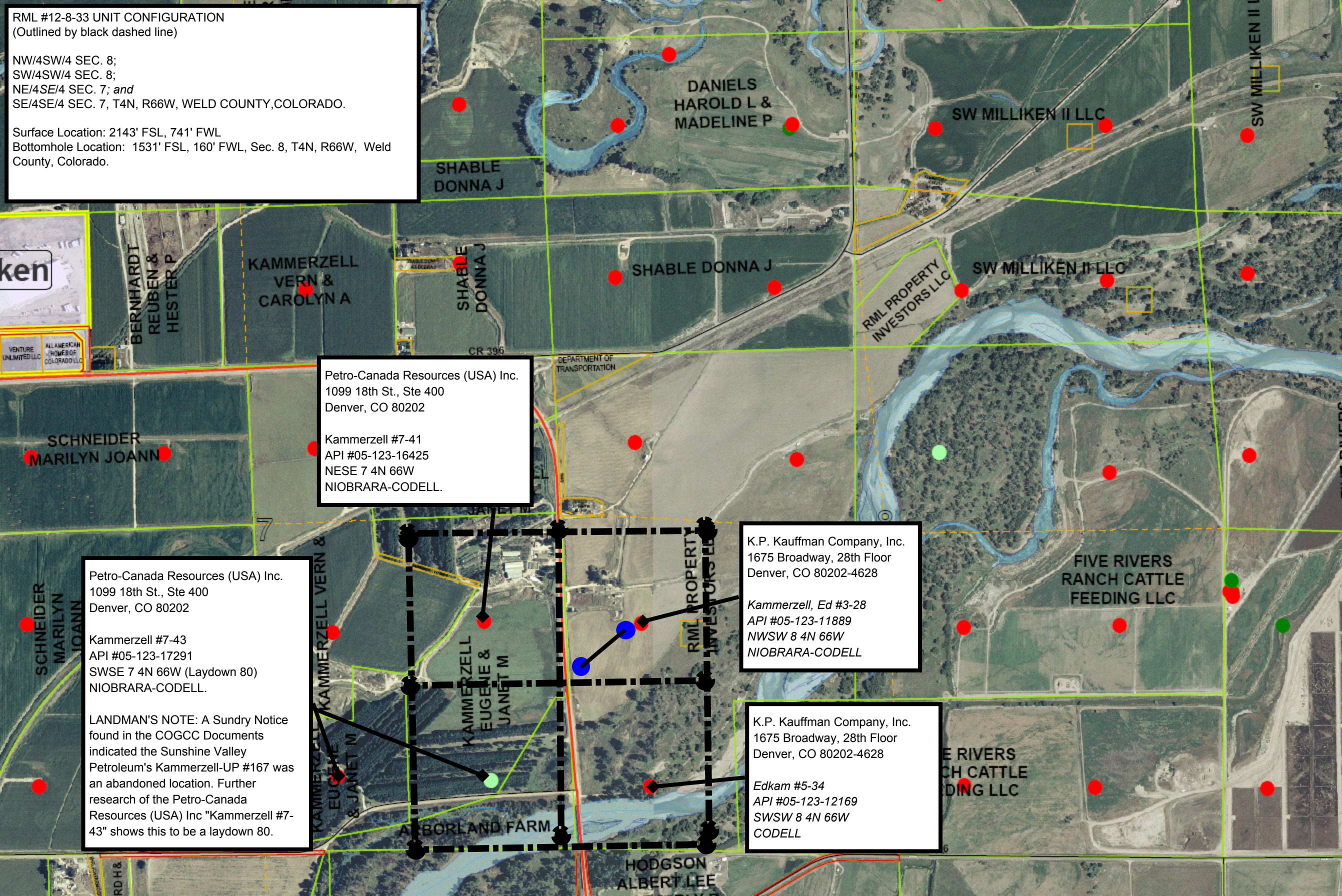


RML #12-8-33 UNIT CONFIGURATION  
(Outlined by black dashed line)

NW/4SW/4 SEC. 8;  
SW/4SW/4 SEC. 8;  
NE/4SE/4 SEC. 7; and  
SE/4SE/4 SEC. 7, T4N, R66W, WELD COUNTY,COLORADO.

Surface Location: 2143' FSL, 741' FWL  
Bottomhole Location: 1531' FSL, 160' FWL, Sec. 8, T4N, R66W, Weld County, Colorado.



Petro-Canada Resources (USA) Inc.  
1099 18th St., Ste 400  
Denver, CO 80202

Kammerzell #7-41  
API #05-123-16425  
NESE 7 4N 66W  
NIOBRARA-CODELL.

Petro-Canada Resources (USA) Inc.  
1099 18th St., Ste 400  
Denver, CO 80202

Kammerzell #7-43  
API #05-123-17291  
SWSE 7 4N 66W (Laydown 80)  
NIOBRARA-CODELL.

LANDMAN'S NOTE: A Sundry Notice found in the COGCC Documents indicated the Sunshine Valley Petroleum's Kammerzell-UP #167 was an abandoned location. Further research of the Petro-Canada Resources (USA) Inc "Kammerzell #7-43" shows this to be a laydown 80.

K.P. Kauffman Company, Inc.  
1675 Broadway, 28th Floor  
Denver, CO 80202-4628

Kammerzell, Ed #3-28  
API #05-123-11889  
NWSW 8 4N 66W  
NIOBRARA-CODELL

K.P. Kauffman Company, Inc.  
1675 Broadway, 28th Floor  
Denver, CO 80202-4628

Edkam #5-34  
API #05-123-12169  
SWSW 8 4N 66W  
CODELL