

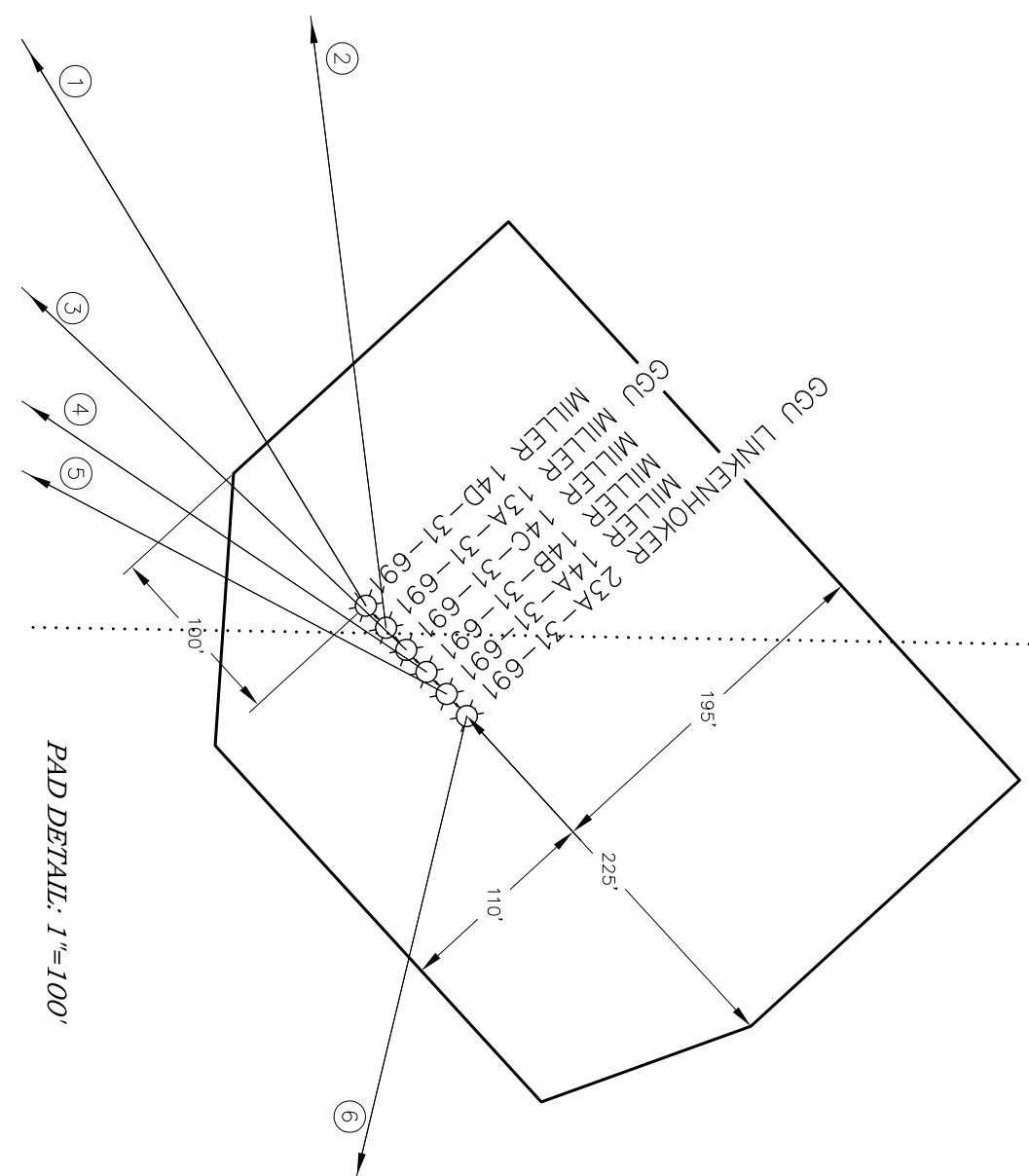
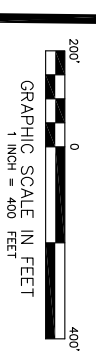
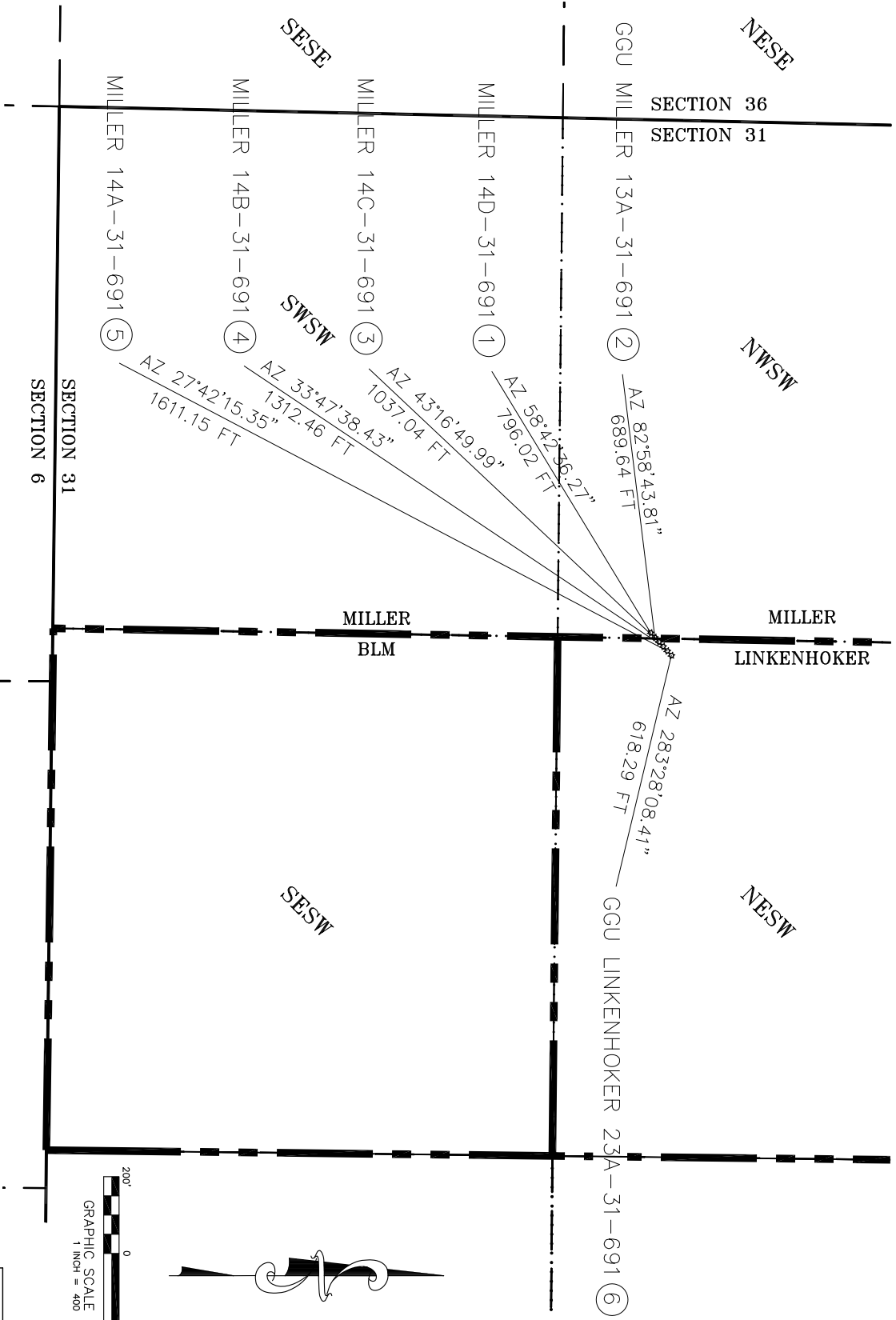
# WELL INTERFERENCE EXHIBIT

## MILLER DRILL PAD # 5


NAD 83 COLORADO CENTRAL ZONE

SURFACE HOLE LOCATIONS

SURFACE HOLE LOCATIONS						BOTTOM HOLE LOCATIONS					
WELL NAME	FNSL	FEWL	NORTHING	EASTING	LATITUDE/LONGITUDE	FNSL	FEWL	NORTHING	EASTING	LATITUDE/LONGITUDE	
1 MILLER 14D-31-691	1557 FSL	1336 FWL	1606983.0	2406980.2	39.481114 -107.601156	1135 FSL	665 FWL	1606569.6	2406300.0	39.479936 -107.603532	
2 GGU MILLER 13A-31-691	1568 FSL	1347 FWL	1606993.8	2406992.0	39.481145 -107.601115	1475 FSL	665 FWL	1606909.5	2406307.5	39.480870 -107.603533	
3 MILLER 14C-31-691	1579 FSL	1359 FWL	1607004.6	2407003.8	39.481175 -107.601074	815 FSL	665 FWL	1606249.7	2406292.9	39.479058 -107.603531	
4 MILLER 14B-31-691	1590 FSL	1370 FWL	1607015.4	2407015.6	39.481205 -107.601033	490 FSL	665 FWL	1605924.7	2406285.6	39.478165 -107.60353	
5 MILLER 14A-31-691	1601 FSL	1382 FWL	1607026.2	2407027.4	39.481236 -107.600993	165 FSL	665 FWL	1605599.8	2406278.4	39.477273 -107.603529	
6 GGU LINKENHOKER 23A-31-691	1612 FSL	1393 FWL	1607037.0	2407039.2	39.481266 -107.600952	1475 FSL	1998 FWL	1606893.0	2407640.5	39.480909 -107.598810	




\*NOTE: THE FINISHED PAD ELEVATION IS 6029.0'



111 E. THIRD ST., SUITE 208 R/F/E, CO 81650  
(970) 625-3048

REV. DATE: 09/04/09  
SURVEY DATE: 09/05/08  
RELEASE DATE: 09/11/08  
SCALE: 1" = 400'  
SHEET: 1 of 1  
PROJECT #: 08001



**Bill Barrett Corporation**

N1/2SW1/4, SECTION 31  
T. 6 S., R. 91 W. of the 6th. P.M.  
GARFIELD COUNTY, COLORADO