

DALEY LAND SURVEYING, INC.

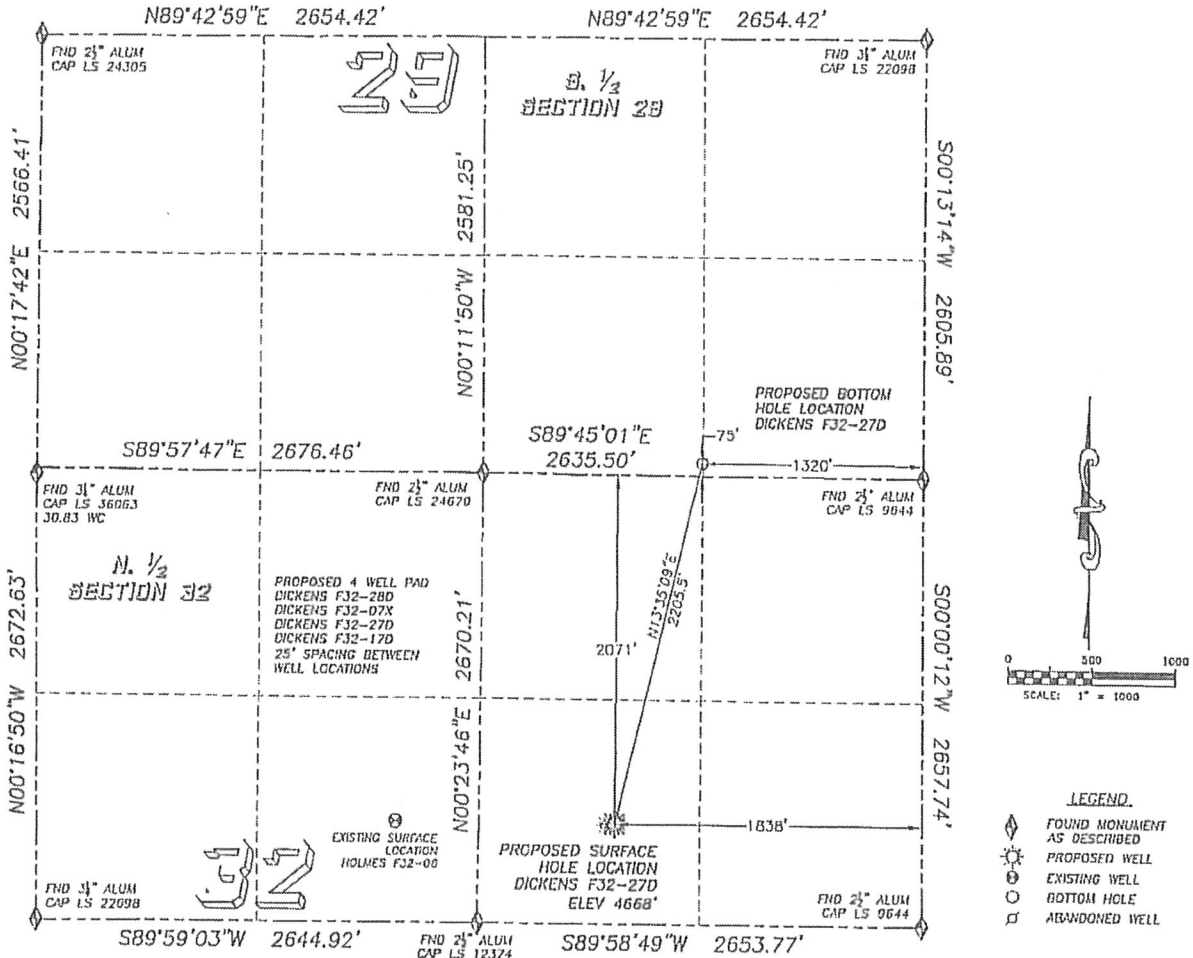
PARKER, CO. 80134

303 953 9841

WELL LOCATION CERTIFICATE

DICKENS F32-27D

SECTION 32, TOWNSHIP 5 NORTH, RANGE 65 WEST OF THE 6TH PRINCIPAL MERIDIAN

**NAD 83 LATITUDE AND LONGITUDE****DICKENS F32-27D SURFACE HOLE:**

LATITUDE: N40.35739°
 LONGITUDE: W104.68445°
 ELEVATION: 4668'
 POOP: 1.2

2071' FNL, 1838' FEL

BOTTOM HOLE:

LATITUDE: N40.36327°
 LONGITUDE: W104.68259°

75' FSL, 1320' FEL, SEC 29, 5N-65W.

NEAREST EXISTING WELL:

HOLMES F32-6 SURFACE HOLE
 LATITUDE: N40.33740°
 LONGITUDE: W104.68915°
 ELEVATION: 4662'
 1311' WEST

QUARTER/QUARTER: SW4/NE4

NEAREST APPARENT PROPERTY LINE:
 513'± EAST

IN ACCORDANCE WITH A REQUEST FROM ROBBIE MILLER OF NOBLE ENERGY INC., DALEY LAND SURVEYING, INC. HAS DETERMINED THE SURFACE LOCATION OF THE DICKENS F32-27D WELL TO BE 2071' FNL, 1838' FEL, AS MEASURED AT NINETY (90) DEGREES FROM THE SECTION LINES OF SECTION 32, TOWNSHIP 5 NORTH, RANGE 65 WEST OF THE 6TH PRINCIPAL MERIDIAN, WELD COUNTY COLORADO.

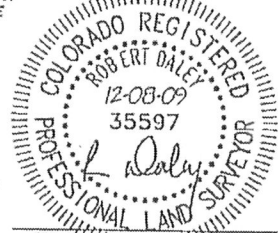
THE BOTTOM HOLE LOCATION PROVIDED BY THE CLIENT IS TO BE 75' FSL, 1320' FEL OF SEC. 29, T.5N, R.65W.

I HEREBY CERTIFY THAT THIS WELL LOCATION CERTIFICATE WAS PREPARED BY ME OR UNDER MY DIRECT SUPERVISION, THAT THE WORK WAS COMPLETED ON 12/07/2009 FOR AND ON BEHALF OF NOBLE ENERGY, INC., AND THAT THIS MAP DOES NOT REPRESENT A BOUNDARY SURVEY, IT IS NOT A LAND SURVEY PLAT OR AN IMPROVEMENT SURVEY PLAT AND IT IS NOT TO BE RELIED UPON FOR THE ESTABLISHMENT OF FENCE, BUILDING OR OTHER FUTURE IMPROVEMENT LINES.

NOTES:

- 1) BASIS OF BEARING FOR THIS MAP IS ASSUMED AND BASED UPON GPS OBSERVATIONS MADE BETWEEN MONUMENTS LOCATED AT THE NORTHEAST AND NORTH QUARTER CORNERS OF SECTION 32, T.5N, R.65W, AND ALL BEARINGS SHOWN HEREON ARE RELATIVE THERETO.
- 2) HORIZONTAL DATUM IS NAD83.
- 3) VERTICAL DATUM IS NAVD83. ELEVATIONS ARE DERIVED FROM GPS-RTK OBSERVATIONS PROCESSED THROUGH OPUS, UTILIZING THE GEOD03 MODEL.
- 4) SEE VISIBLE IMPROVEMENTS EXHIBIT FOR VISIBLE IMPROVEMENTS WITHIN 400' OF PROPOSED SURFACE HOLE LOCATION
- 5) SURFACE USE: OPEN FIELD

NOTICE: According to Colorado law you MUST commence any legal action based upon any defect in this W.L.C. within three years after you first discover such defect. In no event may any action based upon any such defect in this W.L.C. be commenced more than ten years from the date of this certification shown herein.



FOR AND ON BEHALF OF
 DALEY LAND SURVEYING, INC.,
 Robert Daley, PLS 35597

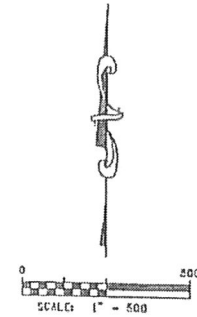
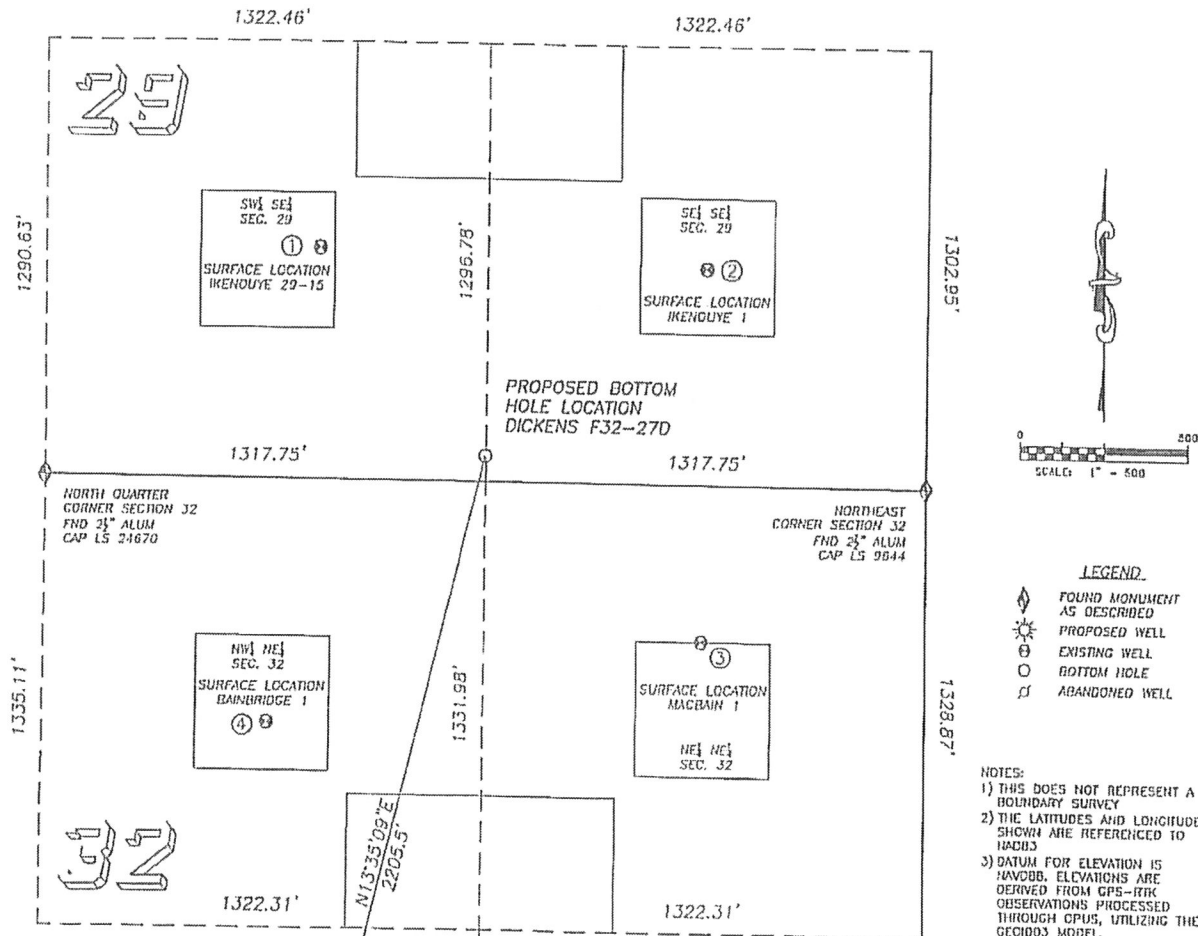
DALEY LAND SURVEYING, INC.

PARKER, CO. 80134

303 953 9841

SITE SKETCH DICKENS F32-27D

SECTION 32, TOWNSHIP 5 NORTH, RANGE 65 WEST OF THE 6TH PRINCIPAL MERIDIAN



LEGEND

- FOUND MONUMENT AS DESCRIBED
- PROPOSED WELL
- EXISTING WELL
- BOTTOM HOLE
- ABANDONED WELL

NOTES:

- 1) THIS DOES NOT REPRESENT A BOUNDARY SURVEY
- 2) THE LATITUDES AND LONGITUDES SHOWN ARE REFERENCED TO NAD83
- 3) DATUM FOR ELEVATION IS NAVD83. ELEVATIONS ARE DERIVED FROM GPS-RTK OBSERVATIONS PROCESSED THROUGH CPUS, UTILIZING THE GEOD03 MODEL.

①
IKENOUE 29-15
SW/SE SEC. 29
684' FSL, 1823' FEL
790' NW OF PROPOSED
BOTTOM HOLE LOCATION
LAT. N40.36495°
LONG. W104.68439°
EL: 4646'
PDOP 1.8

SW/NE
SEC. 32

PROPOSED SURFACE
HOLE LOCATION
DICKENS F32-27D
ELEV 4668'

②
IKENOUE 1
SE/SE SEC. 29
643' FSL, 651' FEL
870' NE OF PROPOSED
BOTTOM HOLE LOCATION
LAT. N40.36482°
LONG. W104.68022°
EL: 4646'
PDOP 3.4

③
MAGBAIN 1
NE/NE SEC. 32
464' FNL, 667' FEL
848' SE OF PROPOSED
BOTTOM HOLE LOCATION
LAT. N40.36178°
LONG. W104.68025°
EL: 4649'
PDOP 1.6

④
BAINBRIDGE 1
NW/NE SEC. 32
723' FNL, 1968' FEL
1026' SW OF PROPOSED
BOTTOM HOLE LOCATION
LAT. N40.36109°
LONG. W104.68492°
EL: 4650'
PDOP 2.1

