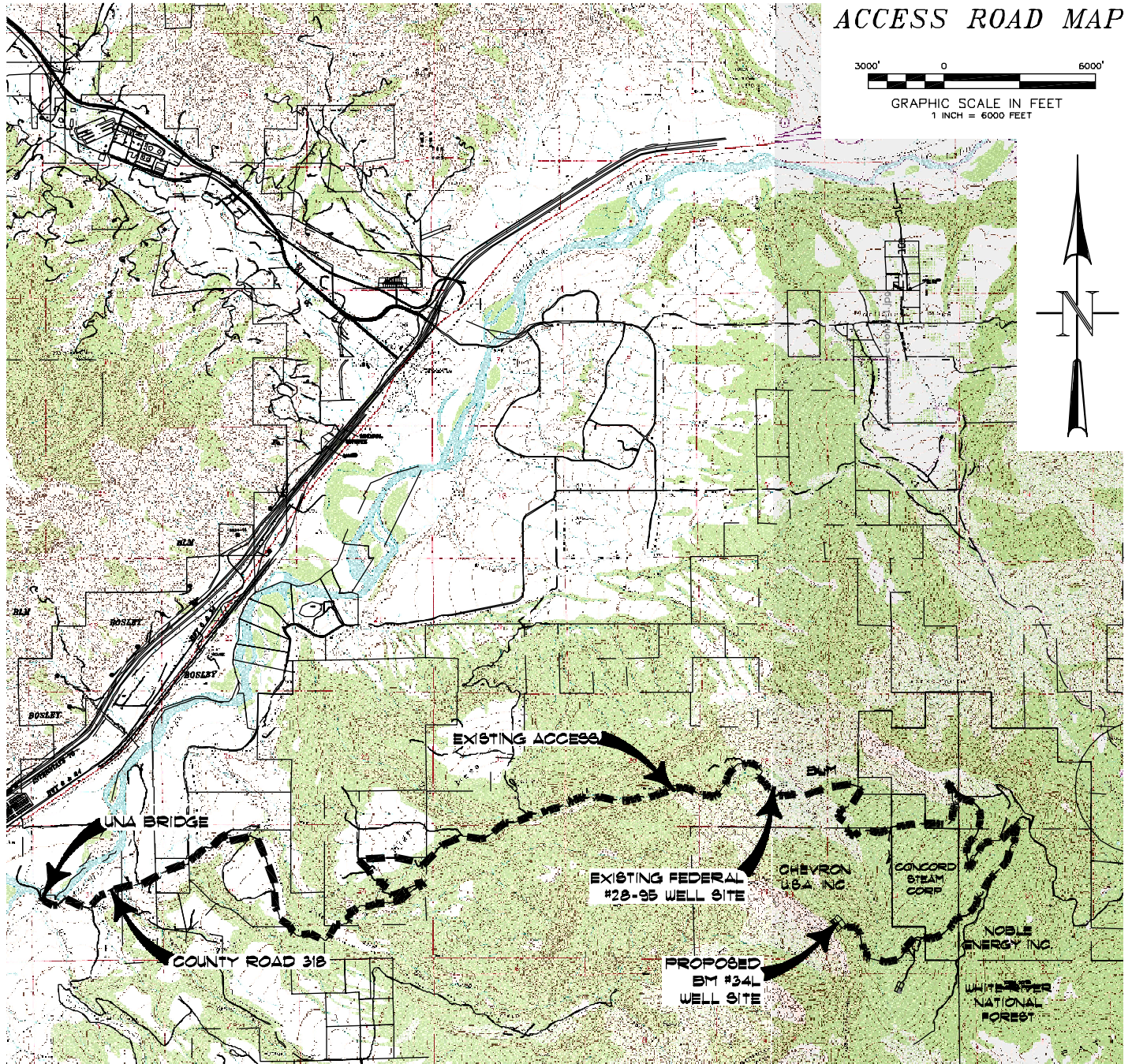
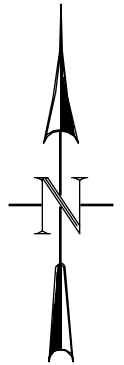


# ACCESS ROAD MAP

3000' 0 6000'  
GRAPHIC SCALE IN FEET  
1 INCH = 6000 FEET



## ACCESS:

FROM THE UNA BRIDGE, PROCEED ALONG COUNTY ROAD 318 IN A GENERAL EAST/NORTHEAST DIRECTION  $\pm 1.2$  MILES TO THE KLEBOLD/THROM GATE, PROCEED IN A GENERAL EASTERLY/SOUTHEASTERLY DIRECTION ON A PRIVATE DIRT/GRAVEL ROAD  $\pm 1.8$  MILES TO THE APPROXIMATE BLM BOUNDARY, CONTINUE ON THE DIRT/GRAVEL ROAD THRU BLM IN A GENERAL NORTHERLY DIRECTION  $\pm 0.1$  MILES TO THE APPROXIMATE TOM BROWN, INC BOUNDARY, CONTINUE ON THE DIRT/GRAVEL ROAD THRU TOM BROWN, INC PROPERTY IN A GENERAL NORTHEASTERLY/NORTHWESTERLY DIRECTION  $\pm 1.6$  MILES TO AN INTERSECTION WITH A DIRT/GRAVEL ROAD ON THE RIGHT, PROCEED RIGHT IN A GENERAL EASTERLY DIRECTION THRU TOM BROWN, INC PROPERTY  $\pm 0.6$  MILES TO THE APPROXIMATE BLM BOUNDARY, CONTINUE ON THE DIRT/GRAVEL ROAD IN A GENERAL EASTERLY DIRECTION THRU BLM PROPERTY  $\pm 3.1$  MILES TO THE TOM BROWN, INC FEDERAL #28-95 WELL SITE, CONTINUE ALONG THE DIRT/GRAVEL ROAD IN A GENERAL EASTERLY DIRECTION  $\pm 3.6$  MILES TO AN INTERSECTION WITH A DIRT/GRAVEL ROAD ON THE RIGHT, PROCEED RIGHT IN A GENERAL SOUTHWESTERLY DIRECTION  $\pm 1.9$  MILES, PAST THE PROPOSED BM #340 PAD SITE, TO THE PROPOSED BM #34L WELL SITE, BEING THE LOCATION.



CONSTRUCTION SURVEYS, INC.  
0012 SUNRISE BLVD.  
SILT, CO 81652  
(970)876-5753

BM #34L

NW1/4 SW1/4 OF SECTION 34, T. 7 S., R. 95 W.  
NOBLE ENERGY INC.

SCALE: 1" = 6000'

SHEET 4 OF 10