

T6S, R97W, 6th P.M.

BERRY PETROLEUM COMPANY

Well location, OXY 28-23D F28 697, located as shown in the SE 1/4 NW 1/4 of Section 28, T6S, R97W, 6th P.M., Garfield County, Colorado.

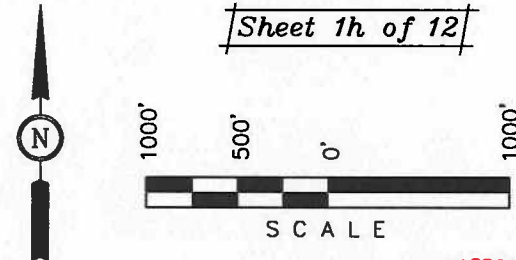
BASIS OF ELEVATION

SPOT ELEVATION AT THE NORTHWEST CORNER OF SECTION 30, T5S, R95W, 6th P.M. TAKEN FROM THE FORKED GULCH QUADRANGLE, COLORADO, GARFIELD COUNTY, 7.5 MINUTE SERIES (TOPOGRAPHICAL MAP) PUBLISHED BY THE UNITED STATES DEPARTMENT OF THE INTERIOR, GEOLOGICAL SURVEY. SAID ELEVATION IS MARKED AS BEING 5966 FEET.

BASIS OF BEARINGS

BASIS OF BEARINGS IS A G.P.S. OBSERVATION.

Sheet 1h of 12



CERTIFICATE

THIS IS TO CERTIFY THAT THE ABOVE PLAT WAS PREPARED FROM FIELD NOTES OF ACTUAL SURVEYS MADE BY ME OR UNDER MY SUPERVISION AND THAT THE SAME ARE TRUE AND CORRECT TO THE BEST OF MY KNOWLEDGE AND BELIEF.

REGISTERED LAND SURVEYOR
REGISTRATION NO. 17492
STATE OF COLORADO

N 1/4 Cor Sec 34
W.C. 1917 Brass
Cap, 2.2' High
Lat: 39.486769
Long: 108.206467

East-105.60'
(G.L.O.)
True Position

UINTAH ENGINEERING & LAND SURVEYING
85 SOUTH 200 EAST - VERNAL, UTAH 84078
(435) 789-1017

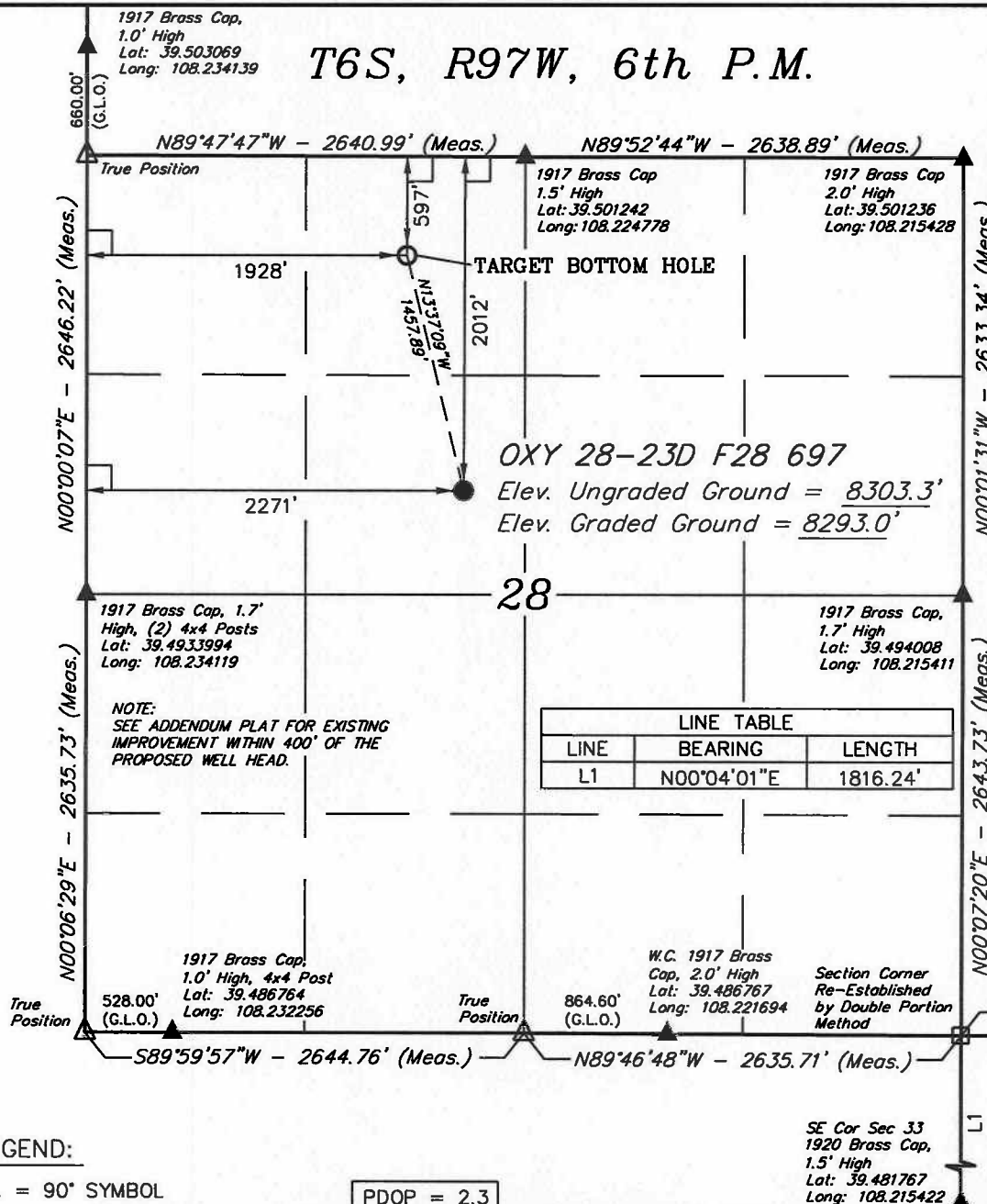
LEGEND:

- └─┘ = 90° SYMBOL
- = PROPOSED WELL HEAD.
- ▲ = SECTION CORNERS LOCATED.
- = RE-ESTABLISHED USING DOUBLE PORTION METHOD.

PDOP = 2.3

NAD 83 (TARGET BOTTOM HOLE)	NAD 83 (SURFACE LOCATION)
LATITUDE = 39°29'58.59" (39.499608)	LATITUDE = 39°29'44.60" (39.495722)
LONGITUDE = 108°13'38.28" (108.227300)	LONGITUDE = 108°13'33.88" (108.226078)
NAD 27 (TARGET BOTTOM HOLE)	NAD 27 (SURFACE LOCATION)
LATITUDE = 39°29'58.67" (39.499631)	LATITUDE = 39°29'44.68" (39.495744)
LONGITUDE = 108°13'35.98" (108.226661)	LONGITUDE = 108°13'31.58" (108.225439)

SE Cor Sec 33
1920 Brass Cap,
1.5' High
Lat: 39.481767
Long: 108.215422



1917 Brass Cap,
1.0' High
Lat: 39.503069
Long: 108.234139

N89°47'47"W - 2640.99' (Meas.)

N89°52'44"W - 2638.89' (Meas.)

1917 Brass Cap
1.5' High
Lat: 39.501242
Long: 108.224778

1917 Brass Cap
2.0' High
Lat: 39.501236
Long: 108.215428

TARGET BOTTOM HOLE

OXY 28-23D F28 697
Elev. Ungraded Ground = 8303.3'
Elev. Graded Ground = 8293.0'

28

1917 Brass Cap, 1.7'
High, (2) 4x4 Posts
Lat: 39.4933994
Long: 108.234119

1917 Brass Cap,
1.7' High
Lat: 39.494008
Long: 108.215411

NOTE:
SEE ADDENDUM PLAT FOR EXISTING
IMPROVEMENT WITHIN 400' OF THE
PROPOSED WELL HEAD.

1917 Brass Cap,
1.0' High, 4x4 Post
Lat: 39.486764
Long: 108.232256

W.C. 1917 Brass
Cap, 2.0' High
Lat: 39.486767
Long: 108.221694

Section Corner
Re-Established
by Double Portion
Method

True Position

True Position

True Position

S89°59'57"W - 2644.76' (Meas.)

N89°46'48"W - 2635.71' (Meas.)

S89°56'16"W - 2528.26' (Meas.)