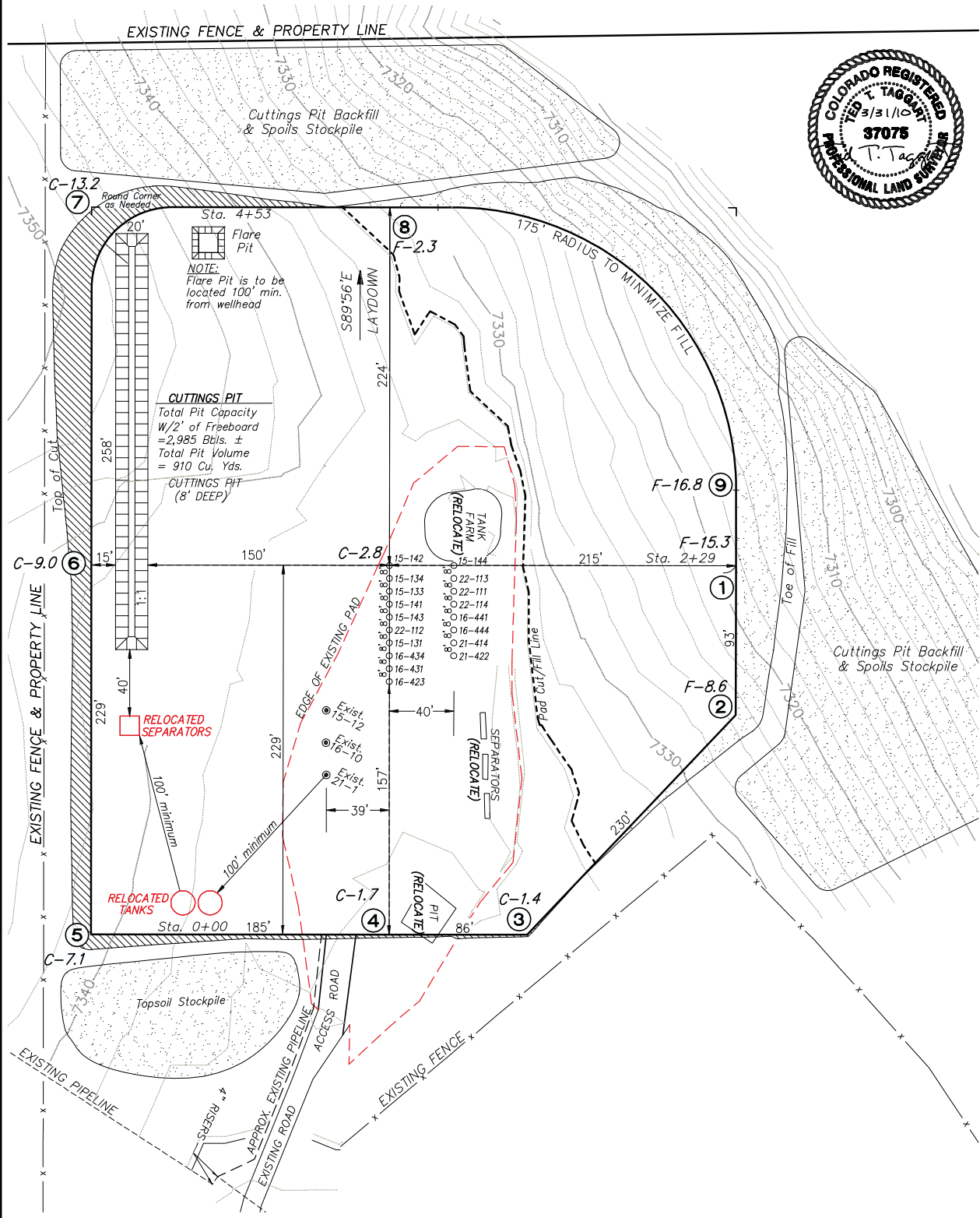
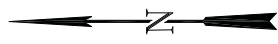
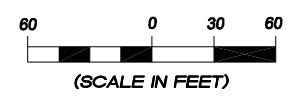


**Delta Petroleum Corporation**  
**LOCATION LAYOUT FOR**  
**PAD BCU 16P**  
 SECTION 16, T9S, R93W, 6th P.M.



**NOTES:**

Elev. Ungraded Ground At Loc. Stake = 7336.6'  
 FINISHED GRADE ELEV. AT LOC. STAKE = 7333.8'



906 Main Street  
 Evanston, Wyoming 82930  
 Phone No. (307) 789-4545

Location Layout		Scale: 1" = 60'	SHEET
Project No.	08-07-07	Date Surveyed:	4/28/08
Date Drawn:	6/30/08	Latest Revision Date:	3/31/10
			<b>6</b>