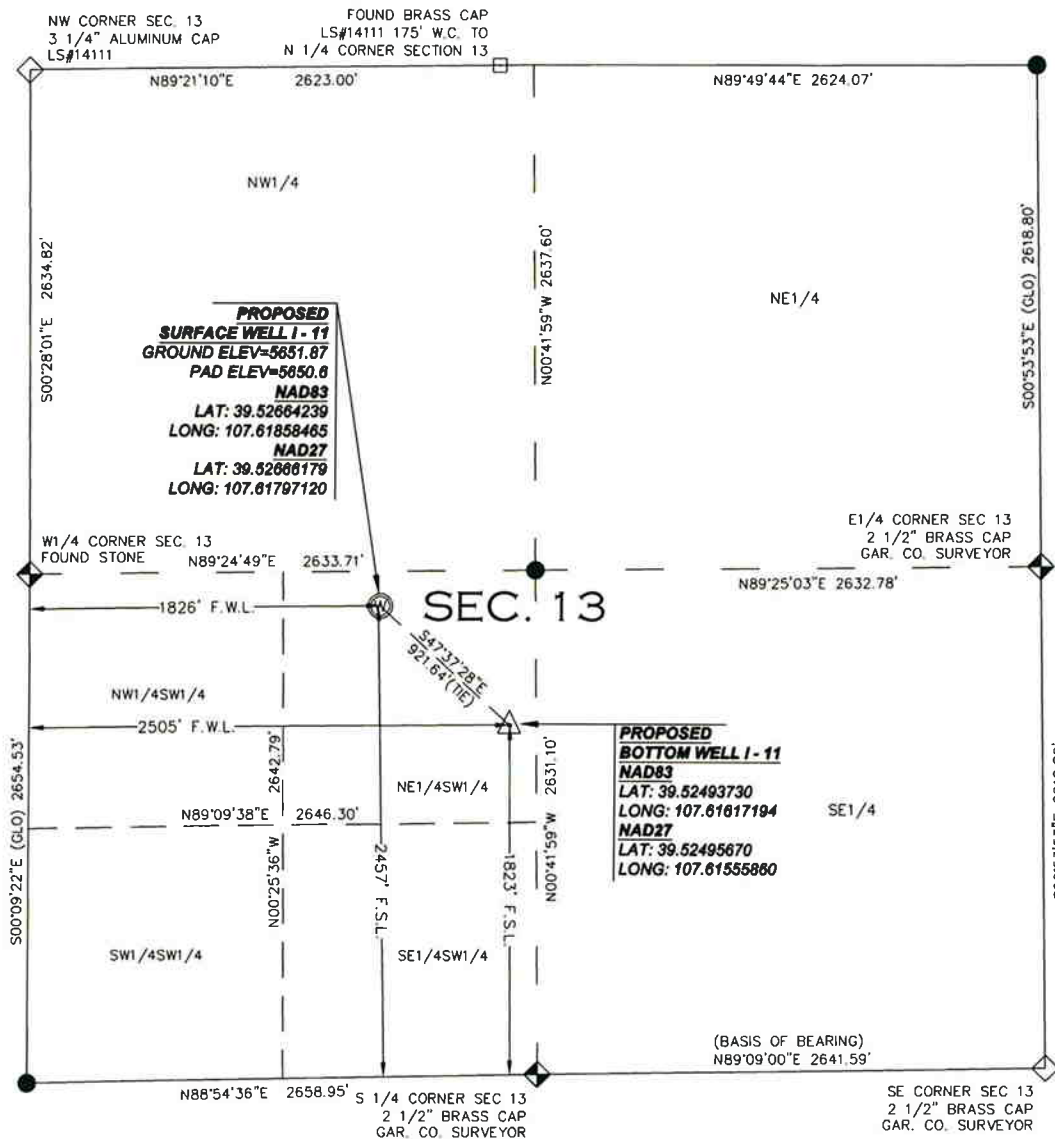


# WELL LOCATION PLAT

## SECTION 13, TOWNSHIP 6 SOUTH, RANGE 92 WEST, 6TH P.M.



**VALLEY FARMS PAD I**  
**GARFIELD COUNTY,**  
**COLORADO**

**WELL I-11**  
 2457' FSL  
 1826' FWL

**WGS 84**  
**LATITUDE**  
 39.52664239 N  
**LONGITUDE**  
 107.61858465 W

**NAD 83**  
**NORTHING**  
 23918.18  
**EASTING**  
 102623.92

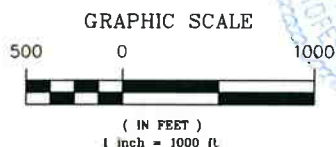
### LEGEND

- ⊙ FIELD SURVEYED WELL LOCATION
- ◇ FIELD SURVEYED SECTION CORNER
- ◆ FIELD SURVEYED QUARTER CORNER
- CALCULATED SECTION CORNER LOCATION
- △ PROPOSED BOTTOM OF WELL LOCATION

### SURVEYOR'S STATEMENT

I, FRANK W. HARRINGTON, DO HEREBY STATE THAT THIS SURVEY WAS PREPARED BY HIGH COUNTRY ENGINEERING, INC. FOR ANTERO RESOURCES, THAT SAID SURVEY WAS PREPARED BY ME OR UNDER MY SUPERVISION AND RESPONSIBLE CHARGE AND THAT IT IS TRUE AND CORRECT TO THE BEST OF MY BELIEF AND KNOWLEDGE.

BY   
 FRANK W. HARRINGTON, L.S. NO. 19598



### NOTES:

1. LATITUDES AND LONGITUDES ARE BASED ON NAD83, NGS POINTS "ANDERS M," "TAMBURELLO" AND "WDP 5".
2. ELEVATION BASED ON NAVD OF 1988.
3. WELL MEASUREMENTS ARE 90' FROM SECTION LINES.
4. CURRENT SURFACE LAND USE: IRRIGATED RANGE LAND.
5. DATE OF DRAFTING: JANUARY 4, 2010.
6. DATE OF SURVEY: DECEMBER 29, 2009.
7. PDOP = 1.9 FEET.
8. BASIS OF BEARINGS WERE DETERMINED BY GPS OBSERVATION YIELDING A BEARING OF N89°09'00"E BETWEEN THE SOUTH QUARTER CORNER OF SECTION 13 BEING A 2 1/2" BRASS CAP, GAR. CO. SURVEYOR AND THE SOUTHEAST CORNER OF SECTION 13 BEING A 2 1/2" BRASS CAP, GAR. CO. SURVEYOR.

**HIGH COUNTRY ENGINEERING, INC.**



1517 BLAKE AVENUE, STE 101  
 GLENWOOD SPRINGS, CO 81601  
 PHONE (970) 945-8676 • FAX (970) 945-2555  
 WWW.HCENG.COM

DRAWN BY: RPK	SCALE: 1" = 1000'
CHECKED BY: FWH	PROJECT NO: 2051034
DATE: 01/04/10	PAGE: 2 OF 13
FILE: PAD I PACKET WELL I-11	

**WELL LOCATION PLAT**  
**PREPARED FOR:**



**ANTERO**  
**RESOURCES**

NE 1/4 SW 1/4 OF SECTION 13  
 T.6S., R. 92 W. OF THE 6TH P.M.  
 GARFIELD COUNTY, COLORADO