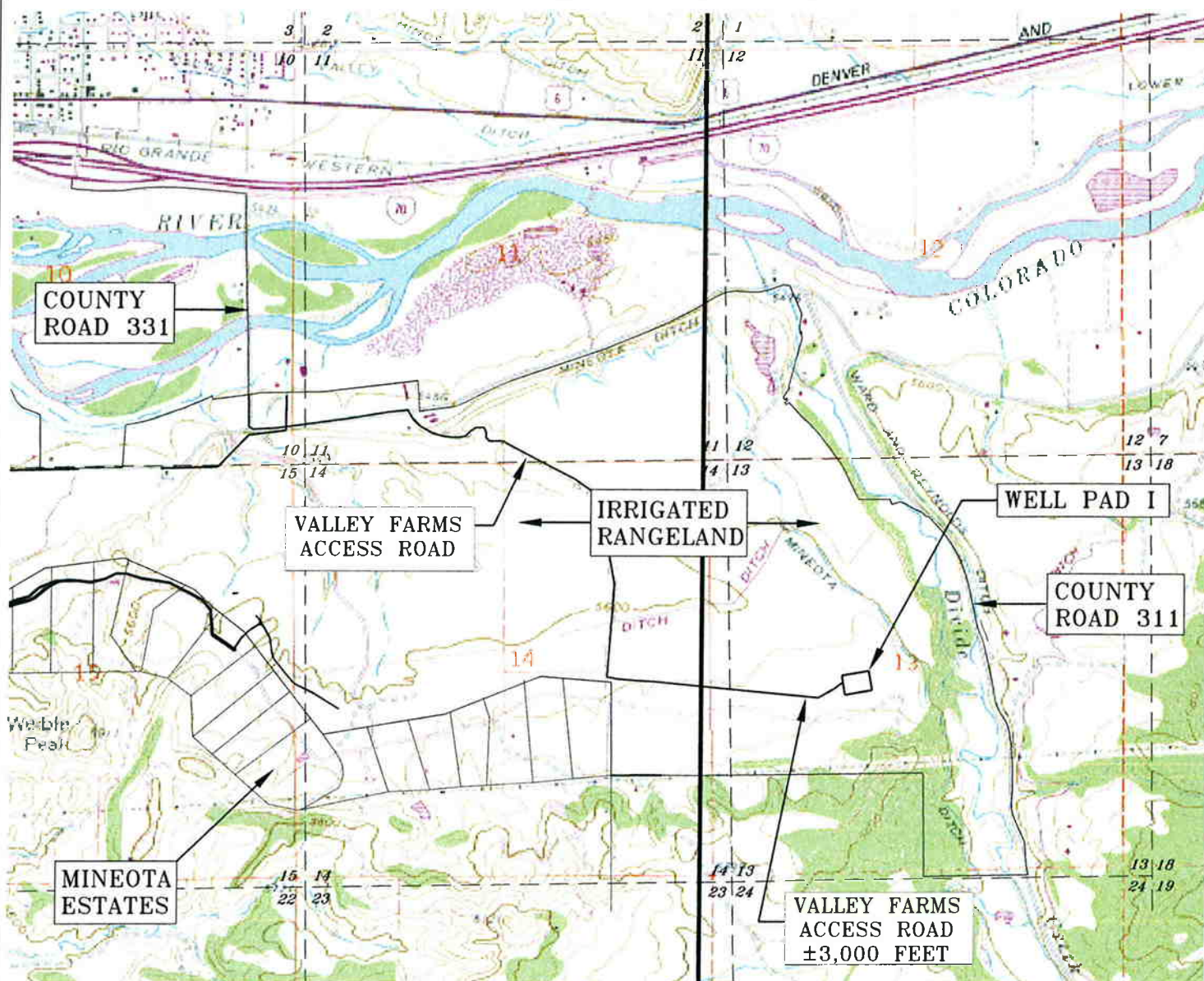


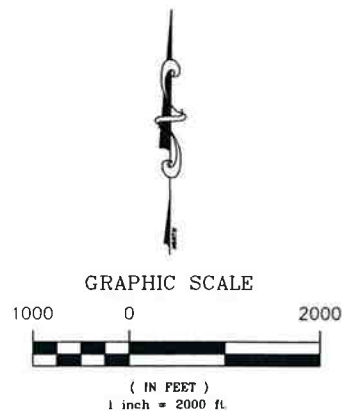
VALLEY FARMS PAD I - WELL I-10

NE 1/4SW 1/4 OF SECTION 13, TOWNSHIP 6 SOUTH, RANGE 92 WEST OF THE 6TH P.M.



ACCESS DESCRIPTION

FROM I-70 EXIT 97 (SILT); THEN FOLLOW ALONG (EAST) ON COUNTY ROAD 311 (FRONTAGE ROAD) ± 0.43 MILES, THEN TURN RIGHT (SOUTH) AND CONTINUE TO FOLLOW COUNTY ROAD 311 ± 0.57 MILES TO THE INTERSECTION OF COUNTY ROAD 331, TURN LEFT (EAST) AND CONTINUE ON COUNTY ROAD 331 ± 0.38 MILES TO THE INTERSECTION OF A VALLEY FARMS INTERNAL ACCESS ROAD. TURN RIGHT (SOUTHEASTERLY) ONTO THE VALLEY FARMS INTERNAL ACCESS ROAD ± 0.53 MILES TO A TEE INTERSECTION WITH A NORTH-SOUTH RUNNING VALLEY FARMS INTERNAL ACCESS ROAD. TURN RIGHT (SOUTH), ONTO THE VALLEY FARMS INTERNAL ACCESS ROAD ± 0.44 MILES TO A TEE INTERSECTION WITH AN EAST-WEST RUNNING VALLEY FARMS INTERNAL ACCESS ROAD. TURN LEFT (EAST) ONTO THE VALLEY FARMS INTERNAL ACCESS ROAD ± 0.56 MILES TO PAD I.



HIGH COUNTRY ENGINEERING, INC.



1517 BLAKE AVENUE, STE 101
GLENWOOD SPRINGS, CO 81601
PHONE (970) 945-8676 · FAX (970) 945-2555

WWW.HCENG.COM

DRAWN BY: RPK	SCALE: 1" = 2000'
CHECKED BY: FWH	PROJECT No: 2051034
DATE: 12/28/09	PAGE: 7 OF 13
FILE: PAD I PACKET WELL I-10	

WELL LOCATION PLAT
PREPARED FOR:



ANTERO
RESOURCES

VALLEY FARMS PAD I
PROPOSED ACCESS

ANTERO RESOURCES

VALLEY FARMS WELL PAD I

WELL I - 10

ACCESS DESCRIPTION

FROM I-70 EXIT 97 (SILT); THEN FOLLOW ALONG (EAST) ON COUNTY ROAD 311 (FRONTAGE ROAD) ± 0.43 MILES, THEN TURN RIGHT (SOUTH) AND CONTINUE TO FOLLOW COUNTY ROAD 311 ± 0.57 MILES TO THE INTERSECTION OF COUNTY ROAD 331, TURN LEFT (EAST) AND CONTINUE ON COUNTY ROAD 331 ± 0.38 MILES TO THE INTERSECTION OF A VALLEY FARMS INTERNAL ACCESS ROAD. TURN RIGHT (SOUTHEASTERLY) ONTO THE VALLEY FARMS INTERNAL ACCESS ROAD ± 0.53 MILES TO A TEE INTERSECTION WITH A NORTH-SOUTH RUNNING VALLEY FARMS INTERNAL ACCESS ROAD. TURN RIGHT (SOUTH), ONTO THE VALLEY FARMS INTERNAL ACCESS ROAD ± 0.44 MILES TO A TEE INTERSECTION WITH AN EAST-WEST RUNNING VALLEY FARMS INTERNAL ACCESS ROAD. TURN LEFT (EAST) ONTO THE VALLEY FARMS INTERNAL ACCESS ROAD ± 0.56 MILES TO PAD I.

HIGH COUNTRY ENGINEERING, INC.



1517 BLAKE AVENUE, STE 101
GLENWOOD SPRINGS, CO 81601
PHONE (970) 945-8676 • FAX (970) 945-2555
WWW.HCENG.COM

DRAWN BY: RPK	SCALE: NA
CHECKED BY: FWH	PROJECT No: 2051034
DATE: 12/28/09	PAGE: 1 OF 13
FILE: PAD I PACKET WELL I - 10	

**WELL LOCATION PLAT
PREPARED FOR:**



**ANTERO
RESOURCES**

NE 1/4 SW 1/4 OF SECTION 13
T. 6 S., R. 92 W. OF THE 6TH P.M.
GARFIELD COUNTY, COLORADO