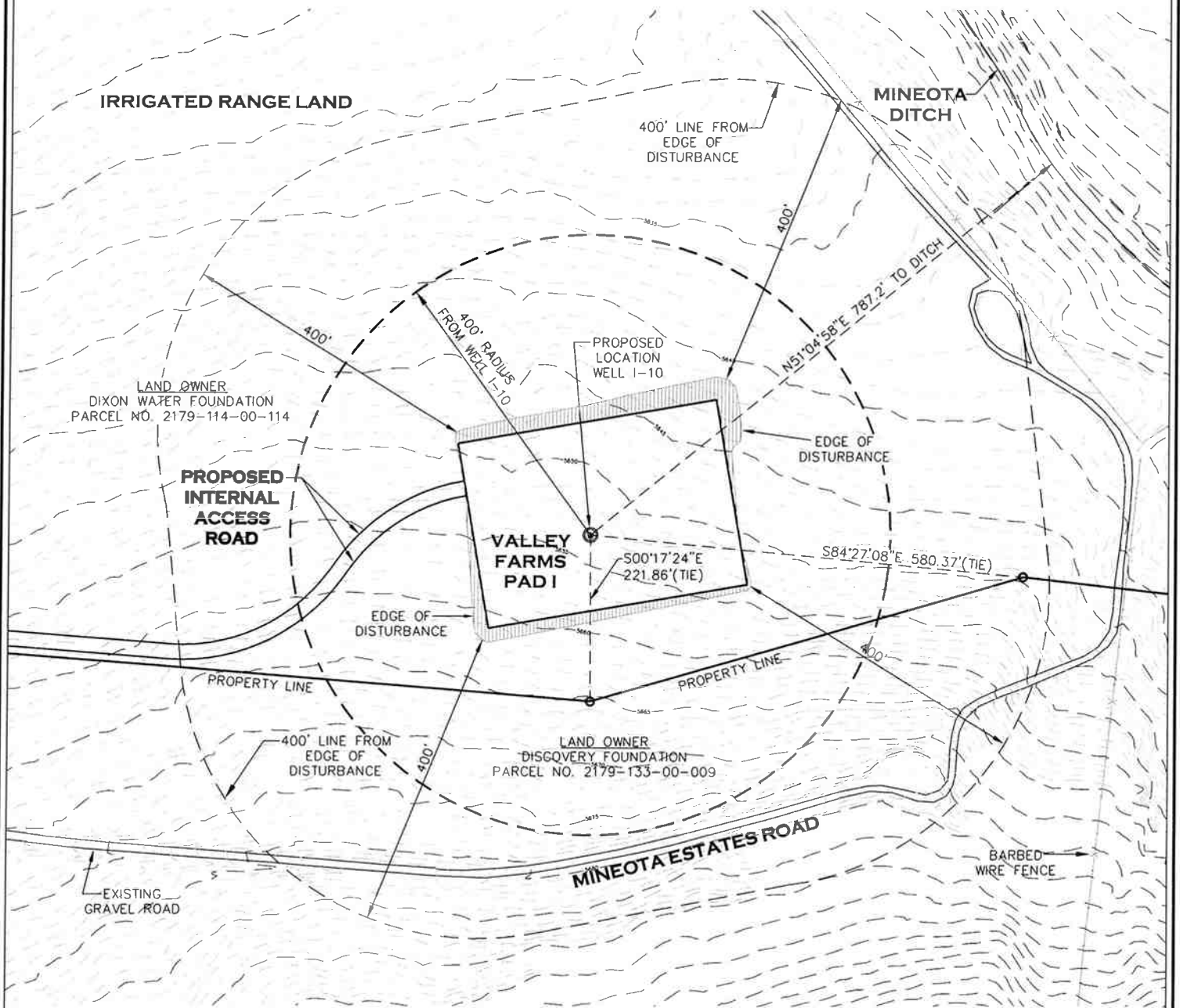


VALLEY FARMS PAD I - WELL I - 10

NE 1/4 SW 1/4 OF SECTION 13, TOWNSHIP 6 SOUTH, RANGE 92 WEST OF THE 6TH P.M.

LOCATION DRAWING



GRAPHIC SCALE



(IN FEET)
1 inch = 200 ft

HIGH COUNTRY ENGINEERING, INC.



1517 BLAKE AVENUE, STE 101
GLENWOOD SPRINGS, CO 81601
PHONE (970) 945-8676 - FAX (970) 945-2555

WWW.HCENG.COM

DRAWN BY: RPK	SCALE: 1" = 60'
CHECKED BY: FWH	PROJECT NO: 2051034
DATE: 12/28/09	PAGE: 4 OF 13
FILE: PAD I PACKET WELL I - 10	

WELL LOCATION PLAN
PREPARED FOR:

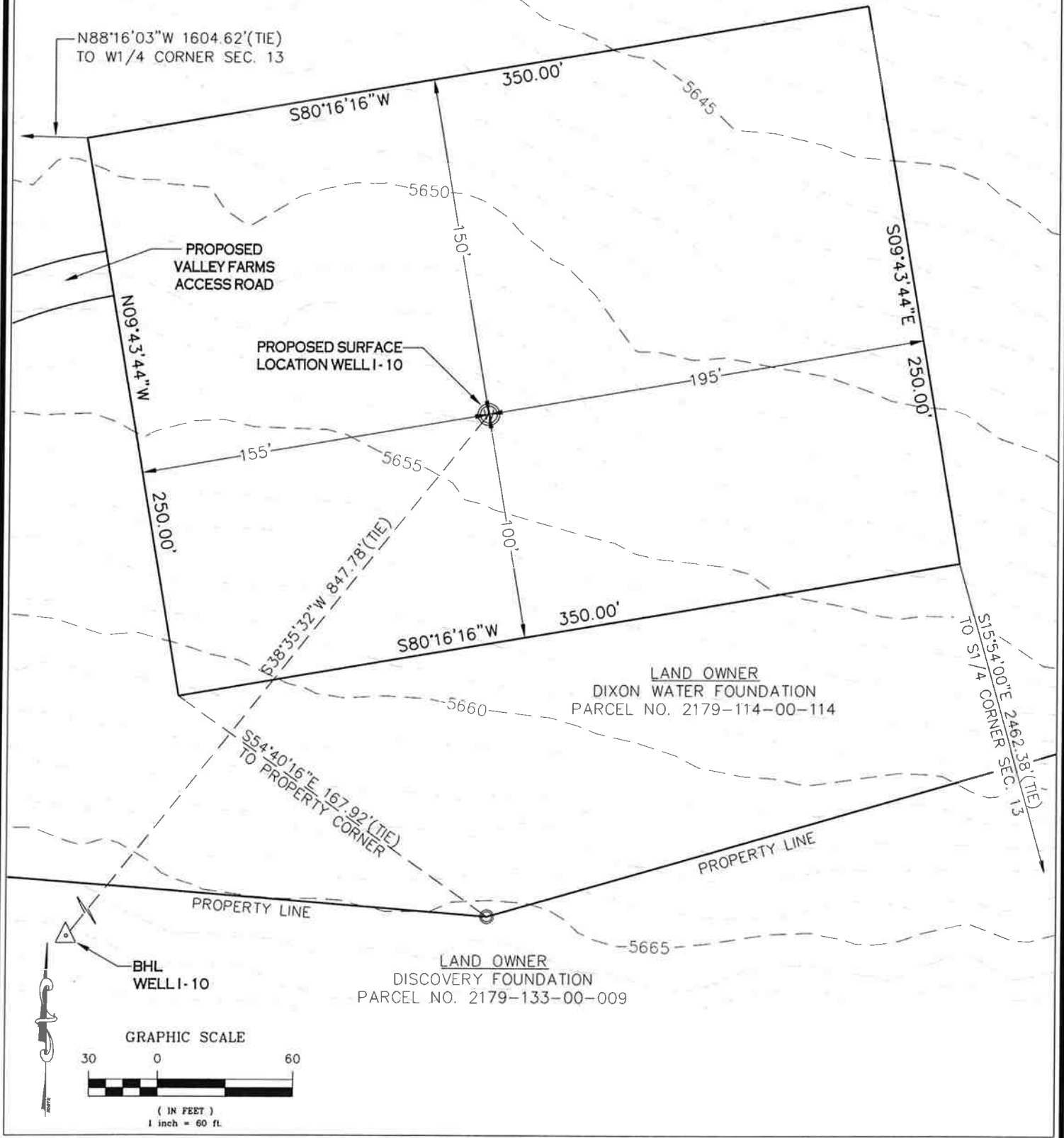


**ANTERO
RESOURCES**

VALLEY FARMS PAD I
EXISTING CONDITIONS

VALLEY FARMS PAD I - WELL I - 10

NE 1/4 SW 1/4 OF SECTION 13, TOWNSHIP 6 SOUTH, RANGE 92 WEST OF THE 6TH P.M.
LOCATION DRAWING



HIGH COUNTRY ENGINEERING, INC.



1517 BLAKE AVENUE, STE 101
GLENWOOD SPRINGS, CO 81601
PHONE (970) 945-8676 - FAX (970) 945-2555
WWW.HCENG.COM

DRAWN BY: RPK	SCALE: 1" = 60'
CHECKED BY: FWH	PROJECT No: 2051034
DATE: 12/28/09	PAGE: 3 OF 13
FILE: PAD I PACKET WELL I - 10	

WELL LOCATION PLAT PREPARED FOR:  **ANTERO RESOURCES**

VALLEY FARMS PAD I
WELL LOCATION