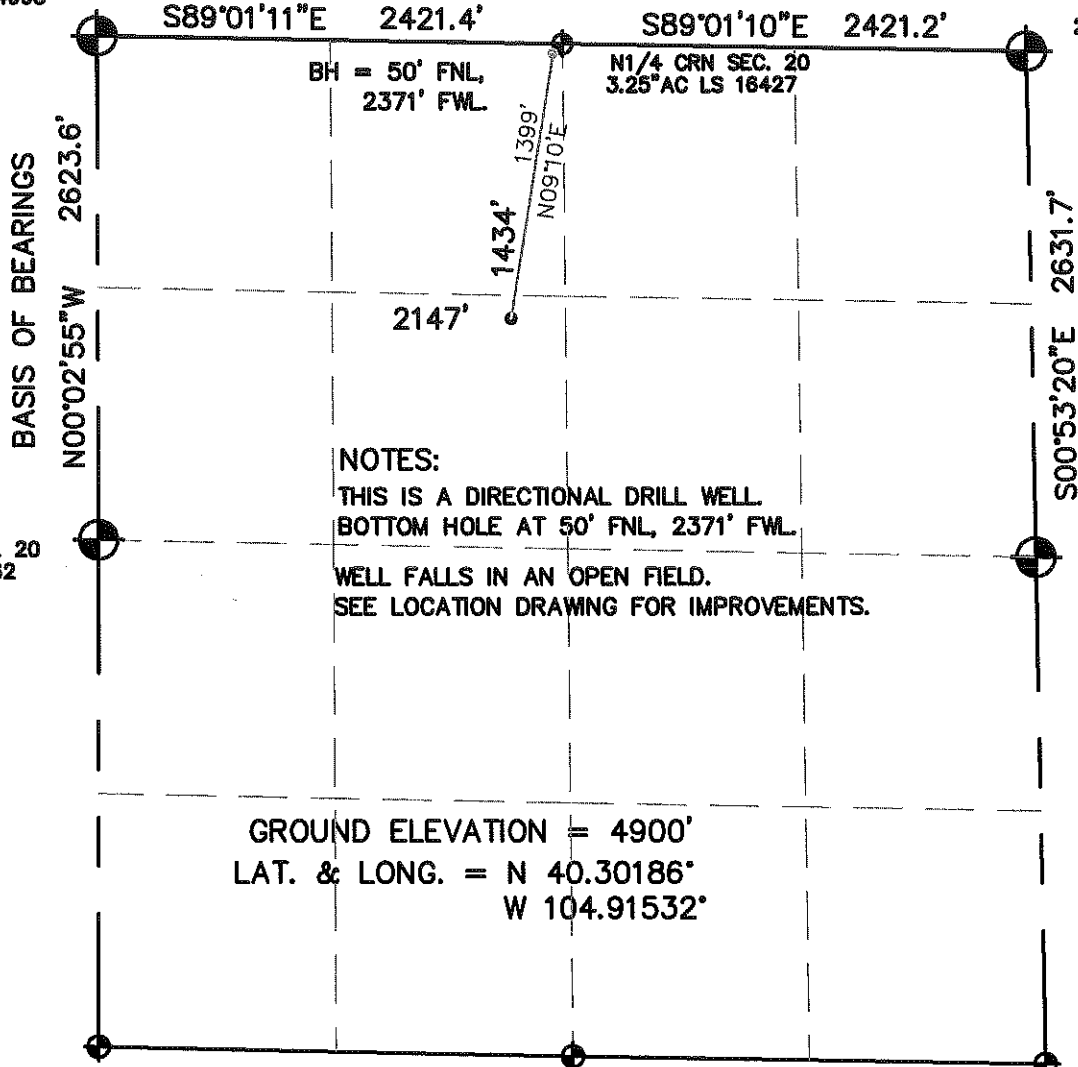


# WELL LOCATION CERTIFICATE

NW CRN SEC. 20  
2.5°AC LS 34995

SECTION 20, TOWNSHIP 4 NORTH, RANGE 67 WEST, 6TH P.M.

NE CRN SEC 20  
2.5°AC LS 23513



## NOTES:

THIS IS A DIRECTIONAL DRILL WELL.  
BOTTOM HOLE AT 50' FNL, 2371' FWL.

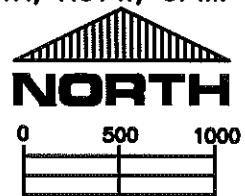
WELL FALLS IN AN OPEN FIELD.  
SEE LOCATION DRAWING FOR IMPROVEMENTS.

GROUND ELEVATION = 4900'  
LAT. & LONG. = N 40.30186°  
W 104.91532°

I HEREBY STATE TO PETROLEUM DEV. CORP. THAT THIS WELL LOCATION CERTIFICATE  
FOR THE WELL BROWN 20MD IS LOCATED 1434' FNL & 2147' FWL, SEC. 20, T4N, R67W, 6PM.

## LEGEND

- = FOUND MONUMENT
- = PROPOSED WELL
- = IMPROVEMENTS (AS LABELED)



SCALE 1" = 1000'

ELEVATION SOURCE = USGS 7.5' QUAD.MAP CONTOURS  
NGVD 1929 DATUM.

LAT. & LONG. ARE DIFFERENTIALLY CORRECTED (NAD'83)  
USING (DGPS) WITH (PDOP) VALUES LESS THAN SIX (6).

SHOWN DISTANCES ARE FIELD MEASURED - EXTERIOR SECTION LINES  
ARE DRAWN TO SCALE (BEST APPROX. OR FOUND MONUMENT).

THOMAS G. CARLSON, PLS 24657  
HORSESHOE SURVEYING, LLC

THIS IS NOT A MONUMENTED BOUNDARY SURVEY, IT IS ONLY A  
DRAWING INTENDED TO DEPICT THE WELL LOCATION TO SECTION LINES.

DISTANCES TO WELL SHOWN PERPENDICULAR  
TO SECTION LINES.

PREPARED BY: HORSESHOE SURVEYING, LLC PO BOX 150458 LAKEWOOD, CO 80215 (720)872-0196		WELL NAME: BROWN 20MD	
DRAWING DATE: 12-21-09		LOCATION: WELD COUNTY, CO NW1/4, SEC. 20, T4N, R67W, 6TH P.M.	
FIELD DATE: 12-21-09	BY: TGC	CHKD:	JOB NO. SHEET NO. 1 OF 1