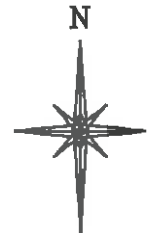
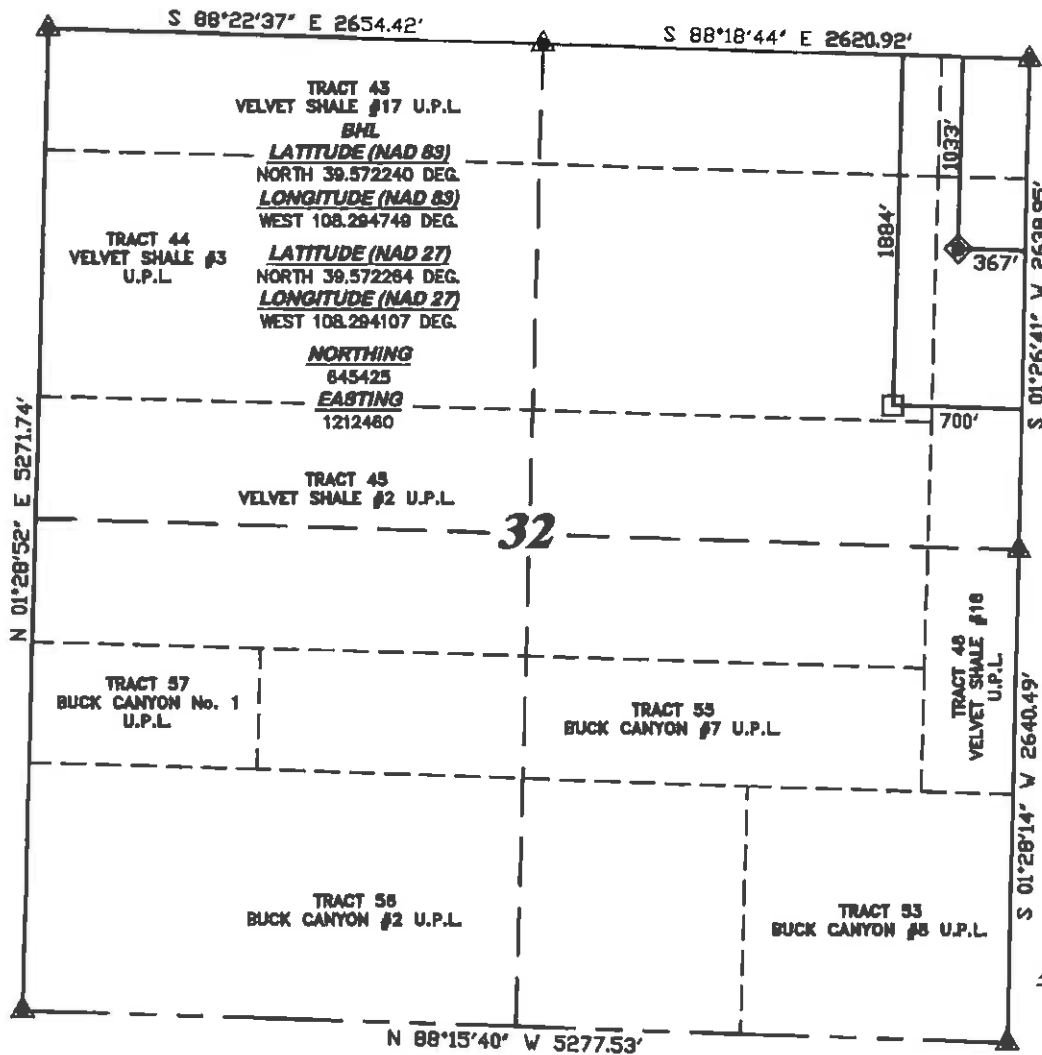


R. 97 W.



SCALE 1" = 1000'

T. 5 S.

LATITUDE (NAD 83)
NORTH 39.574580 DEG.
LONGITUDE (NAD 83)
WEST 108.293584 DEG.

LATITUDE (NAD 27)
NORTH 39.574603 DEG.
LONGITUDE (NAD 27)
WEST 108.292943 DEG.

NORTHING
645425
EASTING
1212480

BASIS OF BEARING/DATUM
SPCS CO CENTRAL NAD 27
BASED ON NGS TRIANGULATION
STATION "MARC"

NOTES

HIGH PLATEAU DESERT
EXISTING WELL FEATURES WITHIN
400' RADIUS OF WELL SITE.

GPS OPERATOR MARK BESSIE
OBSERVED A PDOP OF 2.8.
ALL GPS OBSERVATIONS ARE IN
COMPLIANCE WITH COGCC RULE No.215.

CHEVRON TR
442-32-597
UNGRADED ELEVATION:
8259.7'

BASIS OF ELEVATION: USGS
CONTROL POINT ELEVATION LOCATED
AT THE SW CORNER SECTION 28,
T5S, R97W, ELEVATION: 7913'

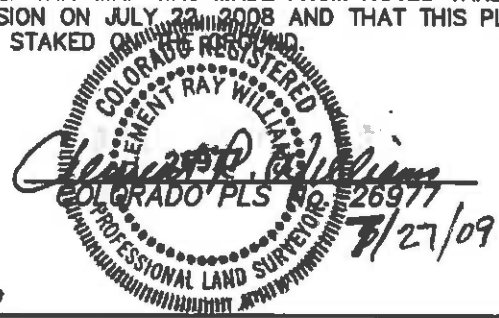


SURVEYOR'S STATEMENT

I, CLEMENT R. WILLIAMS, OF ROCK SPRINGS, WYOMING, HEREBY STATE: THIS MAP WAS MADE FROM NOTES TAKEN DURING AN ACTUAL FIELD SURVEY DONE UNDER MY DIRECT SUPERVISION ON JULY 27, 2008 AND THAT THIS PLAT CORRECTLY SHOWS THE LOCATION OF CHEVRON TR 442-32-597 AS STAKED

LEGEND

- ◆ WELL LOCATION
- BOTTOM HOLE LOC. (APPROX)
- FOUND MONUMENT
- ▲ PREVIOUSLY FOUND MONUMENT



CHEVRON TR 41-32-597 PAD

DRG RIFFIN & ASSOCIATES, INC.
1414 ELK ST., ROCK SPRINGS, WY 82901
(307) 362-5228

DRAWN: 7/27/09 - MMM	SCALE: 1" = 1000'
REVISED: NA	DRG JOB No. 13208
EXHIBIT 1	

PLAT OF DRILLING LOCATION
FOR
WILLIAMS PRODUCTION RMT COMPANY

1033' F/NL & 367' F/EL, SECTION 32,
T. 5 S., R. 97 W., 6th P.M.
GARFIELD COUNTY, COLORADO