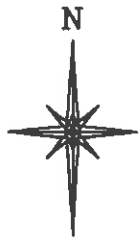
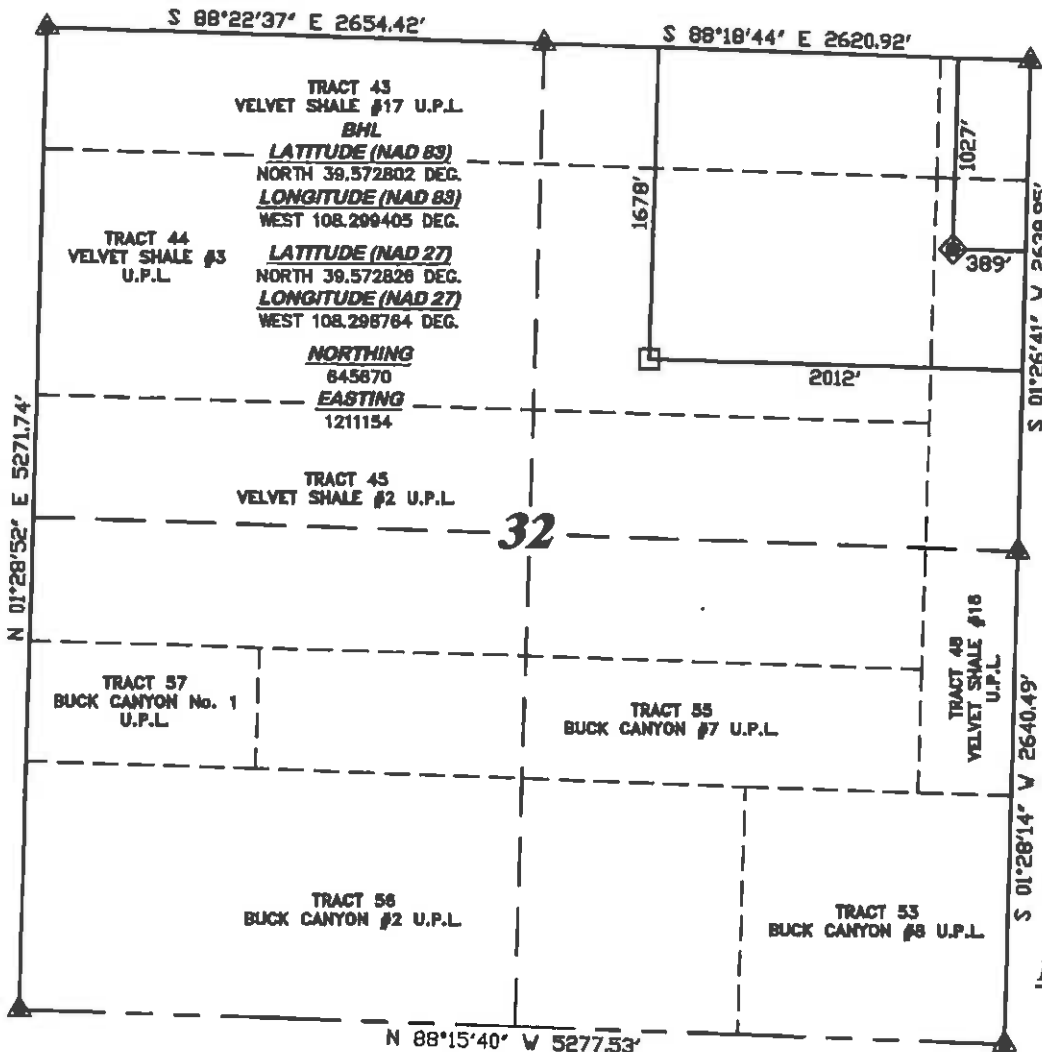


R. 97 W.



SCALE 1" = 1000'

T. 5 S.



LATITUDE (NAD 83)
NORTH 39.574594 DEG.
LONGITUDE (NAD 83)
WEST 108.293662 DEG.

LATITUDE (NAD 27)
NORTH 39.574618 DEG.
LONGITUDE (NAD 27)
WEST 108.293020 DEG.

NORTHING
646272.10
EASTING
1212792.34

BASIS OF BEARING/DATUM
SPCS CO CENTRAL NAD 27
BASED ON NGS TRIANGULATION
STATION "MARC"

NOTES
HIGH PLATEAU DESERT
EXISTING WELL FEATURES WITHIN
400' RADIUS OF WELL SITE.

GPS OPERATOR MARK BESSIE
OBSERVED A PDOF OF 2.8.
ALL GPS OBSERVATIONS ARE IN
COMPLIANCE WITH COGCC RULE No.215.

CHEVRON TR
432-32-597
UNGRADED ELEVATION:
8259.8'

BASIS OF ELEVATION: USGS
CONTROL POINT ELEVATION LOCATED
AT THE SW CORNER SECTION 28,
T5S, R97W, ELEVATION: 7913'

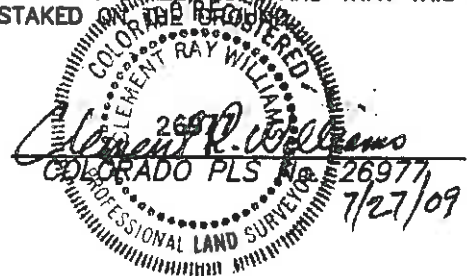


SURVEYOR'S STATEMENT

I, CLEMENT R. WILLIAMS, OF ROCK SPRINGS, WYOMING, HEREBY STATE: THIS MAP WAS MADE FROM NOTES TAKEN DURING AN ACTUAL FIELD SURVEY DONE UNDER MY DIRECT SUPERVISION ON JULY 27, 2009 AND THAT THIS PLAT CORRECTLY SHOWS THE LOCATION OF CHEVRON TR 432-32-597 AS STAKED ON THE GROUND.

LEGEND

- ◆ WELL LOCATION
- BOTTOM HOLE LOC. (APPROX)
- FOUND MONUMENT
- ▲ PREVIOUSLY FOUND MONUMENT



CHEVRON TR 41-32-597 PAD

DRG RIFFIN & ASSOCIATES, INC.
1414 ELK ST., ROCK SPRINGS, WY 82901
(307) 882-0028

PLAT OF DRILLING LOCATION
FOR
WILLIAMS PRODUCTION RMT COMPANY

DRAWN: 7/27/09 - MMM
REVISED: NA

SCALE: 1" = 1000'
DRG JOB No. 13208
EXHIBIT 1

1027' F/NL & 389' F/EL, SECTION 32,
T. 5 S., R. 97 W., 6th P.M.
GARFIELD COUNTY, COLORADO